



I.

Allegro agitato  $\delta = 100$ .

Cantabile

Violoncello  $p$

Pianof.  $pp$

*cresc*

$pp$

Handwritten musical score for piano, consisting of several systems of staves. The notation includes treble and bass clefs, various note values, rests, and dynamic markings. The score is written in ink on aged paper.

Key markings and annotations include:

- cresc* (crescendo)
- pp* (pianissimo)
- 110* (tempo marking)
- decis* (decisive)
- piu agitato poco a poco* (more agitated, little by little)
- sempre cresc* (always crescendo)
- rit* (ritardando)
- all'.* (allegretto)

The score features complex rhythmic patterns, including triplets and sixteenth notes, and a variety of chordal textures. The dynamics range from *pp* to *cresc*, indicating a wide range of volume and intensity.



*meno f*

Musical staff with notes and rests.

Two staves of piano accompaniment. The upper staff has a *fue* marking above it. The lower staff has a *meno f* marking above it.

Musical staff with notes and rests, including a *meno f* marking.

Two staves of piano accompaniment. The upper staff has a *meno f* marking above it. The lower staff has a *meno f* marking above it.

Musical staff with notes and rests, including a *meno f* marking.

Two staves of piano accompaniment. The upper staff has a *meno f* marking above it. The lower staff has a *meno f* marking above it.

Musical staff with notes and rests, including a *meno f* marking.

Two staves of piano accompaniment. The upper staff has a *meno f* marking above it. The lower staff has a *meno f* marking above it.

Handwritten musical notation on a single staff, featuring a treble clef and a key signature of one flat. The notation includes a series of notes with slurs and dynamic markings such as *10* and *11*. The word *cresc* is written below the staff.

Handwritten musical notation for a grand staff (treble and bass clefs). The right hand contains complex chordal structures and melodic lines, while the left hand features a rhythmic accompaniment with slurs. Dynamic markings include *cresc* and *pp*.

Handwritten musical notation on a single staff, continuing the melodic line from the previous system. It includes slurs and dynamic markings like *pp*.

Handwritten musical notation for a grand staff. The right hand has a melodic line with slurs and dynamic markings such as *pp*. The left hand has a rhythmic accompaniment with slurs.

Handwritten musical notation on a single staff, showing a melodic line with slurs and dynamic markings.

Handwritten musical notation for a grand staff. The right hand features a melodic line with slurs and dynamic markings like *pp*. The left hand has a rhythmic accompaniment with slurs.

Handwritten musical notation on a single staff, showing a melodic line with slurs and dynamic markings.

Handwritten musical notation for a grand staff. The right hand has a melodic line with slurs and dynamic markings like *pp*. The left hand has a rhythmic accompaniment with slurs.

Handwritten musical score, first system. It consists of three staves. The top staff is a single line with a treble clef and a *pp* dynamic marking. The middle and bottom staves are grouped together with a brace on the left, indicating a piano accompaniment. The notation includes various notes, rests, and accidentals.

Handwritten musical score, second system. It consists of three staves. The top staff has a *p* dynamic marking. The middle and bottom staves are grouped together with a brace on the left. The notation continues with notes and accidentals.

Handwritten musical score, third system. It consists of two staves. The top staff has a *pp* dynamic marking. The bottom staff is grouped with a brace on the left. The notation includes notes and accidentals.

Handwritten musical score, fourth system. It consists of two staves. The top staff has a *pp* dynamic marking. The bottom staff is grouped with a brace on the left. The notation includes notes and accidentals.

Handwritten musical score, fifth system. It consists of two staves. The top staff has a *pp* dynamic marking. The bottom staff is grouped with a brace on the left. The notation includes notes and accidentals.

Handwritten musical score, sixth system. It consists of two staves. The top staff has a *pp* dynamic marking. The bottom staff is grouped with a brace on the left. The notation includes notes and accidentals.

*cresc. poco a poco cresc. e subito*

*cresc. poco a poco cresc. e subito*

*poco rit*

*poco rit*

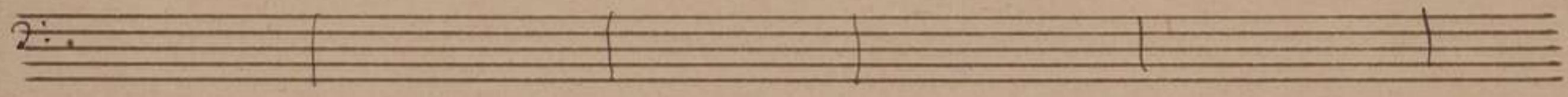
*a tempo*  
*pp*

*a tempo*  
*pp*

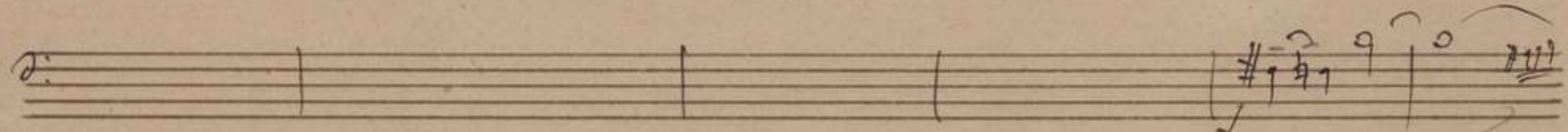
*cantabile*  
*cresc*

*cantabile*  
*cresc*





Handwritten musical notation for the first system, consisting of two staves. The notation includes various notes, rests, and accidentals (sharps and flats).



Handwritten musical notation for the second system, consisting of two staves. The word "she hitos" is written above the first staff. The notation includes notes, rests, and accidentals.

Handwritten musical notation for the third system, consisting of a single staff. The tempo marking "a tempo" is present. The notation includes notes, rests, and accidentals.

Handwritten musical notation for the fourth system, consisting of two staves. The tempo marking "a tempo" is present. The notation includes notes, rests, and accidentals.

Handwritten musical notation for the fifth system, consisting of a single staff. The notation includes notes, rests, and accidentals.

Handwritten musical notation for the sixth system, consisting of two staves. The notation includes notes, rests, and accidentals.



This page contains a handwritten musical score for piano, organized into six systems. Each system consists of three staves: a single treble clef staff at the top, and a grand staff (treble and bass clefs) below it. The notation includes various note values, rests, and dynamic markings such as *f sempre* and *allegro*. The key signature is predominantly one sharp (F#), with some changes to two sharps (F# and C#) and one flat (F). The score shows a progression of chords and melodic lines across the systems, with some sections marked with slurs and accents.

*shatto*

Handwritten musical notation for the first system, consisting of three staves. The top staff is a single melodic line with various accents and slurs. The middle and bottom staves are piano accompaniment with chords and rhythmic patterns.

*shatto*

*pesant, shatto*

*a tempo*

*ndaw*

Handwritten musical notation for the second system, consisting of three staves. The top staff features a melodic line with a "pesant, shatto" marking and a "ndaw" marking. The middle and bottom staves are piano accompaniment. A "a tempo" marking is also present.

*dim*

*p*

*dim. molto*

*pp*

Handwritten musical notation for the third system, consisting of a single staff with a melodic line. It includes dynamic markings: "dim", "p", "dim. molto", and "pp".

Handwritten musical notation for the fourth system, consisting of two staves. The top staff is mostly empty with some notes at the end. The bottom staff has some notes and a "pp" marking.

Handwritten musical notation for the fifth system, consisting of a single staff with a melodic line.

Handwritten musical notation for the sixth system, consisting of two staves. The top staff has notes and a "pp" marking. The bottom staff has notes and a "pillo" marking.

*p* *e* *allegro* *piu* *apoco*

*allegro* *rit.* *f* *a tempo*

*allegro* *rit.* *a tempo*

Musical staff with notes and rests.

Handwritten musical score system with treble and bass clefs, including notes, rests, and dynamic markings.

Musical staff with notes and rests.

Handwritten musical score system with treble and bass clefs, including notes, rests, and dynamic markings.

Musical staff with notes and rests.

Handwritten musical score system with treble and bass clefs, including notes, rests, and dynamic markings.

Musical staff with notes and rests, including the handwritten instruction *molto agitato*.

Handwritten musical score system with treble and bass clefs, including notes, rests, and dynamic markings.

Handwritten musical score system with treble and bass clefs, including notes, rests, and dynamic markings.

Handwritten musical notation on a single staff. It begins with a treble clef and a key signature of one sharp (F#). The notation includes several notes with accents (>) and dynamic markings such as *p* and *dim*.

Handwritten musical notation for a grand staff (treble and bass clefs). The left hand features a complex chordal texture with many accidentals. The right hand has a melodic line with notes and rests. Dynamic markings include *dim* and *p*.

Handwritten musical notation on a single staff, starting with a treble clef and a key signature of two sharps (F#, C#). It features notes with accents and a dynamic marking of *pp*.

Handwritten musical notation for a grand staff. The right hand has a melodic line with notes and rests, marked with *pp* and *tranz*. The left hand has a complex chordal texture with many accidentals, also marked with *pp*.

Handwritten musical notation on a single staff, starting with a treble clef and a key signature of two sharps (F#, C#). It features notes with accents and a dynamic marking of *p*.

Handwritten musical notation for a grand staff. The right hand has a melodic line with notes and rests, marked with *pp*. The left hand has a complex chordal texture with many accidentals, also marked with *pp*.

Handwritten musical notation on a single staff, starting with a treble clef and a key signature of two sharps (F#, C#). It features notes with accents and a dynamic marking of *f*.

Handwritten musical notation for a grand staff. The right hand has a melodic line with notes and rests, marked with *f*. The left hand has a complex chordal texture with many accidentals, marked with *pp*.

Handwritten musical notation on a single staff, featuring a treble clef and a key signature of two sharps (F# and C#). The music begins with a dynamic marking of *p* (piano). The notation includes quarter notes, eighth notes, and rests, with some notes beamed together.

Handwritten musical notation for a grand staff (treble and bass clefs). The treble clef part includes a dynamic marking of *cautel.* (cautelando) and a *p* marking. The bass clef part features complex chordal structures and melodic lines. The system concludes with a double bar line.

Handwritten musical notation on a single staff, continuing the melodic line from the previous system. It features a key signature of two sharps and includes various rhythmic values and phrasing slurs.

Handwritten musical notation for a grand staff. The treble clef part contains several chords and melodic fragments, while the bass clef part provides harmonic support with chords and moving lines. The system ends with a double bar line.

Handwritten musical notation on a single staff, featuring a dynamic marking of *pp* (pianissimo). The notation includes a variety of rhythmic patterns and phrasing slurs.

Handwritten musical notation for a grand staff. The treble clef part includes a dynamic marking of *pp*. The system shows complex harmonic textures in both hands, with many chords and melodic lines.

Handwritten musical notation on a single staff, featuring a dynamic marking of *p*. The notation includes various rhythmic values and phrasing slurs.

Handwritten musical notation for a grand staff. The treble clef part includes a dynamic marking of *pp*. The system concludes with a double bar line and some final chordal textures.



Handwritten musical notation on a single staff, featuring various accidentals and dynamics. The notes are mostly quarter and eighth notes with stems. Dynamics include *trac.*, *poco a poco cresc.*, and *stretto*.

Handwritten musical notation for a piano accompaniment, consisting of two staves. The upper staff contains chords and melodic fragments, while the lower staff contains a bass line. Dynamics include *trac.*, *poco a poco cresc.*, and *stretto*. There are also some handwritten notes like *poco cresc.* written across the staves.

Handwritten musical notation for a piano accompaniment, consisting of two staves. The upper staff contains chords and melodic fragments, while the lower staff contains a bass line. Dynamics include *poco cresc.* written across the staves.

Handwritten musical notation for a piano accompaniment, consisting of two staves. The upper staff contains chords and melodic fragments, while the lower staff contains a bass line. Dynamics include *pp*, *a tempo*, and *p*.

Handwritten musical notation for a piano accompaniment, consisting of two staves. The upper staff contains chords and melodic fragments, while the lower staff contains a bass line. Dynamics include *pp*, *cantabile*, *cresc. poco a poco*, and *poco a poco*.

Handwritten musical score system 1. It consists of three staves: a vocal line at the top and a piano accompaniment below. The piano part features complex chordal textures with many accidentals, including flats (b) and sharps (#). There are some markings like 'b7' and '8' above the piano staves.

Handwritten musical score system 2. Similar to the first system, it has a vocal line and a piano accompaniment. The piano part continues with dense chordal work and includes markings such as 'b7' and '8'.

Handwritten musical score system 3. This system includes dynamic markings 'p' (piano) and 'mf' (mezzo-forte) written above the vocal line. The piano accompaniment remains complex with many accidentals.

Handwritten musical score system 4. The final system on the page, featuring a vocal line and piano accompaniment. It includes a dynamic marking 'f' (forte) at the beginning of the piano part.

Handwritten musical notation, first system. Includes treble and bass staves with complex chordal structures and melodic lines. A large slur covers the first two measures.

Handwritten musical notation, second system. Includes treble and bass staves. Annotations include: *Presto e stretto.*, *pp Presto Più allegro e stretto*, and *una corda pp senza Ped.*

Handwritten musical notation, third system. Includes treble and bass staves. Annotations include *pp* and *cresc*.

Handwritten musical notation, fourth system. Includes treble and bass staves. Annotations include *p cresc* and *più cresc*.

Handwritten musical notation, fifth system. Includes treble and bass staves. Annotations include *p cresc* and *tre corde*.

Handwritten musical score for piano, consisting of 12 systems of staves. The notation includes treble and bass clefs, various time signatures, and complex chordal structures. The score is annotated with numerous performance markings such as accents (>), slurs, and dynamic markings like *com. Ped.*, *ppp*, and *Prehissimo*. The manuscript shows signs of being a working draft, with some corrections and overlapping notes. The piece concludes with a final chord and a fermata.

Handwritten musical notation, first system. Treble clef, G-clef. Notes: quarter, quarter, quarter, quarter, quarter, quarter, quarter, quarter. Chords: G major, A major, B major, C major, D major, E major, F major, G major. Dynamics: *mp*, *mf*, *f*. Performance markings: *rit.*, *rit. a poco*, *rit. molto*.

Handwritten musical notation, second system. Treble clef, G-clef. Notes: quarter, quarter, quarter, quarter, quarter, quarter, quarter, quarter. Chords: G major, A major, B major, C major, D major, E major, F major, G major. Dynamics: *mp*, *mf*, *f*. Performance markings: *rit.*, *rit. a poco*, *rit. molto*.

Handwritten musical notation, third system. Treble clef, G-clef. Notes: quarter, quarter, quarter, quarter, quarter, quarter, quarter, quarter. Chords: G major, A major, B major, C major, D major, E major, F major, G major. Dynamics: *mp*, *mf*, *f*. Performance markings: *rit.*, *rit. a poco*, *rit. molto*.

Handwritten musical notation, fourth system. Treble clef, G-clef. Notes: quarter, quarter, quarter, quarter, quarter, quarter, quarter, quarter. Chords: G major, A major, B major, C major, D major, E major, F major, G major. Dynamics: *mp*, *mf*, *f*. Performance markings: *rit.*, *rit. a poco*, *rit. molto*.

Per

II.

*Andante molto tranquillo* ! = 44.

Handwritten musical notation on a single staff, showing a treble clef, a key signature of one flat (B-flat), and a common time signature (C). The staff contains several measures of music, including rests and notes.

*Andante molto tranquillo*  
*la melodia ben tenuta*

Handwritten musical notation for a piano accompaniment, consisting of two staves. The upper staff is in treble clef and the lower in bass clef, both with a key signature of one flat and common time. The notation includes chords and melodic lines. A dynamic marking *pp* and the instruction *sempre legato* are present.

*pp sempre legato*

Handwritten musical notation on a single staff, showing a treble clef, a key signature of one flat, and a common time signature. It contains several measures of music with rests.

Handwritten musical notation for a piano accompaniment, consisting of two staves. The upper staff is in treble clef and the lower in bass clef, both with a key signature of one flat and common time. The notation includes chords and melodic lines. A dynamic marking *p* is present.

*p*

Handwritten musical notation on a single staff, showing a treble clef, a key signature of one flat, and a common time signature. It contains several measures of music with rests. A dynamic marking *p* and the instruction *cresc.* are present.

*p*

*cresc.*

Handwritten musical notation for a piano accompaniment, consisting of two staves. The upper staff is in treble clef and the lower in bass clef, both with a key signature of one flat and common time. The notation includes chords and melodic lines. A dynamic marking *pp* and the instruction *cresc.* are present.

*pp*

*cresc.*

Handwritten musical notation on a single staff, showing a treble clef, a key signature of one flat, and a common time signature. It contains several measures of music with rests. A dynamic marking *pp* and the instruction *molto cresc.* are present.

*pp*

*molto cresc.*

Handwritten musical notation for a piano accompaniment, consisting of two staves. The upper staff is in treble clef and the lower in bass clef, both with a key signature of one flat and common time. The notation includes chords and melodic lines. A dynamic marking *pp* and the instruction *molto cresc.* are present.

*pp*

*molto cresc.*

Handwritten musical score for piano, consisting of 12 staves. The score includes various musical notations such as chords, melodic lines, and dynamic markings like 'f', 'p', 'mf', 'cresc.', 'poco rit.', 'a tempo', and 'espr.'. The key signature is B-flat major, and the time signature is 2/4. The notation is dense and characteristic of 19th-century manuscript notation.

*resc*

*pr f*

*resc*

*piu poco piu mosso*

*p*

*cres*

*un poco piu mosso*

*pp*

*cres*

*f*

*pr f*

*p*

*resc*

*mp*

*resc*

Handwritten musical score for the fourth system, including a bass clef staff with a key signature of one flat and a common time signature. It features dynamic markings 'p', 'mp', and 'resc'.



Handwritten musical score for piano and violin. The score is written on a system of five staves. The top staff is for the violin, and the bottom two staves are for the piano. The music is in 2/4 time and features various dynamics, articulations, and musical notations.

Key features of the score include:

- Violin Staff:** Starts with a treble clef and a key signature of one flat. It contains several measures with notes, slurs, and accents. A dynamic marking of *f* is present.
- Piano Staff (Upper):** Contains chords and arpeggiated figures. Dynamics include *f*, *pp*, and *p*. A *cresc* marking is visible.
- Piano Staff (Lower):** Contains chords and arpeggiated figures. Dynamics include *pp*, *f*, and *ad.* A *cresc* marking is also present.
- Articulations:** Numerous accents (>) and slurs are used throughout the score.
- Handwritten Annotations:** The word "pau" is written in the middle of the piano staff, and "m. 2" is written below the piano staff.

*ritard. molto* *Tempo<sup>mo</sup> e molto pesante*

*mf*

*ritard. molto*

*Tempo<sup>mo</sup> e molto pesante*

*Adagio*

*pp*

*Tempo*

*una corda*

*pp Adagio*

*mf*

Tempo  $\text{♩} = 1$   
*pp* e cresc.

Musical staff with notes and dynamics. The staff contains several measures of music with notes and rests. The dynamics *pp* and *e cresc.* are indicated above the staff.

Tempo  $\text{♩} = 1$

Musical staff with chords and tremolos. The staff contains several measures of music with chords and tremolos. The dynamics *ppp* and *trem.* are indicated above the staff.

Musical staff with notes and rests. The staff contains several measures of music with notes and rests.

Musical staff with chords and tremolos. The staff contains several measures of music with chords and tremolos.

Musical staff with notes and rests. The staff contains several measures of music with notes and rests.

Musical staff with notes and rests. The staff contains several measures of music with notes and rests. The dynamics *pp* and *cresc. sempre e stretto* are indicated below the staff.

Musical staff with chords and tremolos. The staff contains several measures of music with chords and tremolos. The dynamics *tre cori*, *p*, and *cresc. sempre e stretto* are indicated below the staff.

Musical staff with notes and rests. The staff contains several measures of music with notes and rests. The dynamics *f* and *poco a poco piu tenuto* are indicated above the staff.

Musical staff with chords and tremolos. The staff contains several measures of music with chords and tremolos.

Musical staff with notes and rests. The staff contains several measures of music with notes and rests. The dynamics *f* and *poco a poco piu tenuto* are indicated above the staff.

Handwritten musical score for the first system. It consists of four staves. The top staff is a piano part in G minor, marked *ff*. The second and third staves are violin parts, with the second staff marked *f*. The bottom staff is a cello part. The music includes various dynamics such as *ff*, *f*, *pp*, and *ppp*, along with articulations like accents and slurs. The tempo/mood markings include *rit.* and *poco rit.*

Handwritten musical score for the second system. It consists of four staves. The top staff is a piano part in G minor, marked *a tempo ma tranquillo* and *dolce*. The second and third staves are violin parts. The bottom staff is a cello part. The music includes dynamics such as *p*, *pp*, and *ppp*, along with articulations like slurs and accents. The tempo/mood markings include *a tempo ma tranquillo* and *rit.*

a tempo

Handwritten musical notation on a single staff. It begins with a treble clef, a key signature of one flat (B-flat), and a common time signature (C). The first measure contains a half note G4. The second measure contains a half note A4. The third measure contains a half note B4. The fourth measure contains a half note C5. The fifth measure contains a half note D5. The sixth measure contains a half note E5. The seventh measure contains a half note F5. The eighth measure contains a half note G5. The piece ends with a double bar line and a repeat sign.

Handwritten musical notation for a piano accompaniment. It consists of two staves. The upper staff has a treble clef, a key signature of one flat, and a common time signature. It begins with a half note G4. The lower staff has a bass clef, a key signature of one flat, and a common time signature. It begins with a half note G3. The piece ends with a double bar line and a repeat sign.

sempre più ten. e dim.

Handwritten musical notation on a single staff. It begins with a treble clef, a key signature of one flat, and a common time signature. The first measure contains a half note G4. The second measure contains a half note A4. The third measure contains a half note B4. The fourth measure contains a half note C5. The fifth measure contains a half note D5. The sixth measure contains a half note E5. The seventh measure contains a half note F5. The eighth measure contains a half note G5. The piece ends with a double bar line and a repeat sign.

sempre più ten. e dim.

Handwritten musical notation for a piano accompaniment. It consists of two staves. The upper staff has a treble clef, a key signature of one flat, and a common time signature. It begins with a half note G4. The lower staff has a bass clef, a key signature of one flat, and a common time signature. It begins with a half note G3. The piece ends with a double bar line and a repeat sign.

pp

Handwritten musical notation for a piano accompaniment. It consists of two staves. The upper staff has a treble clef, a key signature of one flat, and a common time signature. It begins with a half note G4. The lower staff has a bass clef, a key signature of one flat, and a common time signature. It begins with a half note G3. The piece ends with a double bar line and a repeat sign.