

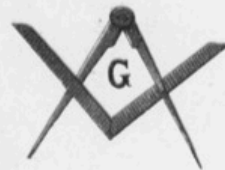
May 13  
56 37 2 2

# ST. ELMO



# MARCH

RESPECTFULLY DEDICATED TO COMMANDER ALONZO BRYMER



BY

## C. MORTIMER WISKE.

BROOKLYN, N.Y.

Published by **GEO. MOLINEUX** 40 Fourth St.

COPYRIGHT, 1886 BY GEO. MOLINEUX.

Chicago, Baltimore, San Francisco, Milwaukee, Quebec,  
GEO. F. ROOT & SON, GEO. WILLIC Jr. M. CRAY, H. N. HEMPSTEAD, LA VIGNE.

Robert Tellen 136 E. 13th St. N.Y.

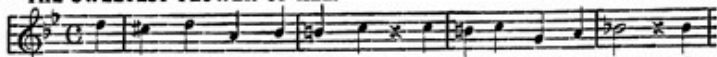
6

# A LIST OF CHOICE POPULAR SONGS.

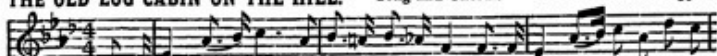
Pieces marked with a star (\*) have handsome Picture Titles.

**\* THE SWEETEST FLOWER OF ALL.**

CHAS. E. PRATT. 40cts.



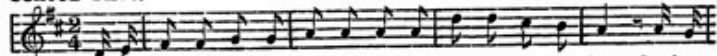
**THE OLD LOG CABIN ON THE HILL.** Song and Chorus. FRANK DUMONT. 35cts.



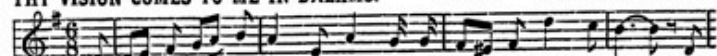
**DANCING ROUND WITH CHARLIE.** Waltz Song. C. M. CONNOLLY. 40cts.



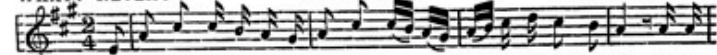
**SCHOOL DAYS.** Song and Chorus. MURPHY AND MORTON. 35cts.



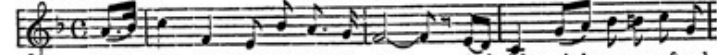
**THY VISION COMES TO ME IN DREAMS.** Ballad. CHAS. E. PRATT. 35cts.



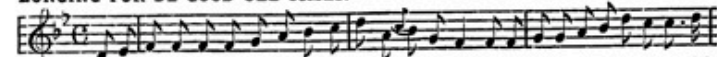
**WHAT! NEVER?** Chinese dialect. A. VON BOYLE. 35cts.



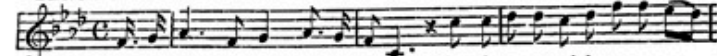
**I'M SO LONELY.** Song and Chorus. ED. W. ORRIN. 35cts.



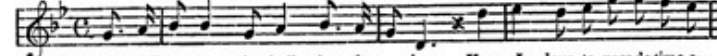
**LONGING FOR DE GOOD OLE TIMES.** Plantation Song. H. P. DANKS. 35cts.



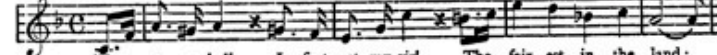
**\* DANCING ON THE GREEN.** Song and Dance. TOMMY TURNER & ED. ORRIN. 40cts.



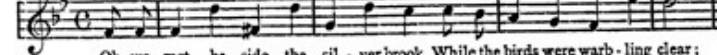
**DANCING IN THE BARN.** Song and Chorus. TOM. TURNER. 40cts.



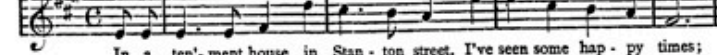
**\* HOURS OF PLEASURE.** Song and Chorus. HARRIS AND CARROLL. 40cts.



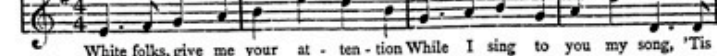
**AMONG THE FLOWERS.** Song and Dance. J. A. TOONE. 35cts.



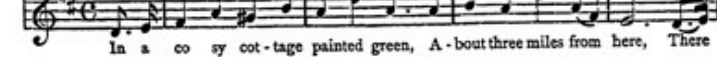
**\* KATY ANN O'BRIEN.** Song and Dance. J. E. MURPHY. 40cts.



**BIG FAT NANCE.** Song and Dance. S. H. SPECK. 35cts.



**\* MARY ANN McLAUGHLIN.** Song and Dance. JAS. BRADLEY. 40cts.



**TELL ME WHERE MY EVA'S GONE.** From Uncle Tom's Cabin. J. H. PEABODY. 35cts.



**LITTLE PLAYTHINGS ON THE FLOOR.** Song and Chorus. S. H. SPECK. 35cts.



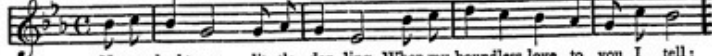
**NEVER SPEAK ILL OF THE DEAD.** Song and Chorus. HARRY PERCY. 35cts.



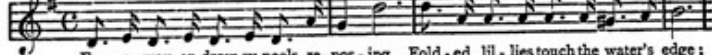
**BENEATH THE OLD PINE TREE.** Song and Chorus. JOHN D. MURPHY. 35cts.



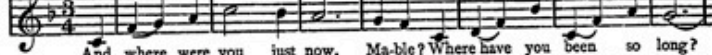
**NEVER DOUBT ME, LITTLE DARLING.** Song and Chorus. S. H. SPECK. 40cts.



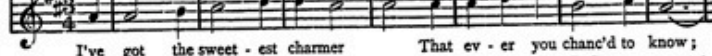
**SLUMBER SONG.** Solo and Chorus. J. A. VAN KUREN. 40cts.



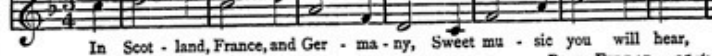
**MABEL,** or Hanging on the Gate. HENRY TUCKER. 35cts.



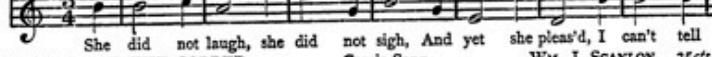
**MY DARLING SARAH ANN.** Comic Song. C. E. PRATT. 35cts.



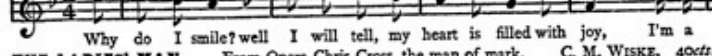
**MUSIC.** WM. J. SCANLON. 35cts.



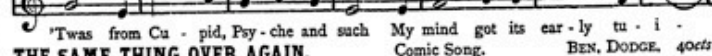
**AMIE.** Song and Chorus. PAUL FERRAR. 35cts.



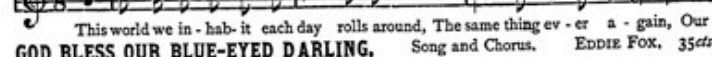
**McCORMICK THE COPPER.** Comic Song. WM. J. SCANLON. 35cts.



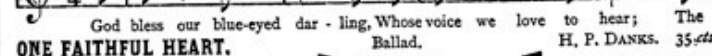
**THE LADIES' MAN.** From Opera Chris Cross, the man of mark. C. M. WISKE. 40cts.



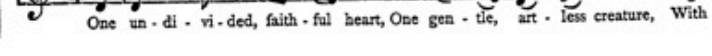
**THE SAME THING OVER AGAIN.** Comic Song. BEN. DODGE. 40cts.



**GOD BLESS OUR BLUE-EYED DARLING.** Song and Chorus. EDDIE FOX. 35cts.



**ONE FAITHFUL HEART.** Ballad. H. P. DANKS. 35cts.



Every piece in this list is valuable, and can be recommended. of price by the publisher. Discount to the profession.

Can be obtained of any music dealer, or will be mailed upon receipt

**GEO. MOLINEUX.**

40 Fourth Street.

BROOKLYN, N. Y.

# ST ELMO MARCH.

C. MORTIMER WISKE.

## Introduction.

The musical score for the introduction of 'St Elmo March' is written for piano in 2/4 time. It consists of five systems of music. The first system begins with a forte (*f*) dynamic and includes a crescendo leading to fortissimo (*ff*). The second and third systems start with mezzo-forte (*mf*) dynamics and also include crescendos to fortissimo (*ff*). The fourth system continues with *mf* and *ff* dynamics. The fifth system features a trill in the right hand marked '8va' and fortissimo (*ff*) dynamics with triplets in both hands. The piece concludes with a repeat sign.

3

First system of a piano score. The right hand features a complex melodic line with many beamed sixteenth notes and some triplets. The left hand provides a steady accompaniment of chords. Dynamics include *f* and *ff*. A fermata is placed over a chord in the right hand.

Second system of the piano score. It includes first and second endings. The first ending leads to a section marked *ff* with triplets in both hands. The second ending is marked *8va* and also features triplets. Dynamics include *ff*.

Third system of the piano score. The right hand has a melodic line with slurs and accents. The left hand has a rhythmic accompaniment. Dynamics include *mf* and *ff*.

Fourth system of the piano score. Similar to the third system, it features a melodic line in the right hand and accompaniment in the left. Dynamics include *mf* and *ff*.

Fifth system of the piano score. Continues the melodic and accompanimental patterns. Dynamics include *mf* and *ff*.

Sixth system of the piano score. The right hand has a melodic line with triplets. The left hand has a rhythmic accompaniment. Dynamics include *ff*. A section is marked *8va*.

4

TRIO.

*f* *ff*

2nd Time in Octave *ff*

*mf*

1. 2.

*f* *ff*

57

mf ff

This system contains the first two measures of a musical piece. The right hand features a melodic line with eighth notes and a triplet of eighth notes in the final measure. The left hand provides a harmonic accompaniment with chords and single notes. Dynamics are marked *mf* and *ff*.

mf ff

This system contains the next two measures. The right hand continues the melodic pattern with eighth notes and a triplet. The left hand accompaniment remains consistent. Dynamics are marked *mf* and *ff*.

mf ff

This system contains the next two measures, mirroring the previous system's structure. Dynamics are marked *mf* and *ff*.

8va. ff

This system contains the next two measures. The right hand has a triplet of eighth notes marked *8va.* (octave above). The left hand accompaniment continues. Dynamics are marked *ff*.

ff ff ff

This system contains the final two measures of the piece. The right hand features a melodic line with eighth notes and a half note. The left hand accompaniment continues. Dynamics are marked *ff*.

