

Johann Wilhelm Furchheim

c. 1635–1682

Suite à 5

Düben collection IMHS 3:12

Arranged for recorders and basso continuo

by

Annette Mondrup & Christian Mondrup

Tenor 2

©2001 Annette Mondrup (annette-mondrup@mail.tele.dk), Christian Mondrup (scancm@biobase.dk)
Johan Tufvesson (tuben@lysator.liu.se)

Typeset with M-Tx, Non-commercial copying welcome

Johann Wilhelm Furchheim (c. 1635–1682)

Præludium

Musical score for Præludium, Tenor 2 part. The score is written in treble clef with a common time signature (C). It consists of three staves of music. The first staff begins with a treble clef and a common time signature. The second staff is marked with a '7' above the first measure. The third staff is marked with a '12' above the first measure. The piece concludes with a double bar line.

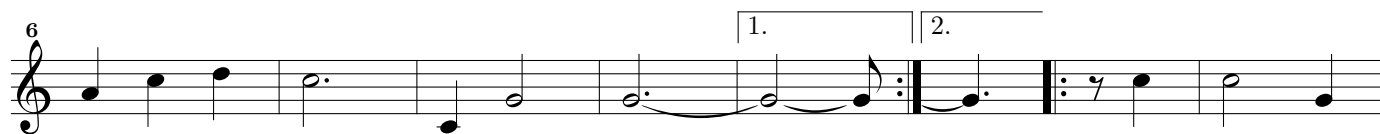
Alemande

Musical score for Alemande, Tenor 2 part. The score is written in treble clef with a common time signature (C). It consists of four staves of music. The first staff begins with a treble clef and a common time signature. The second staff is marked with a '5' above the first measure. The third staff is marked with a '9' above the first measure. The fourth staff is marked with a '13' above the first measure. The piece concludes with a double bar line.

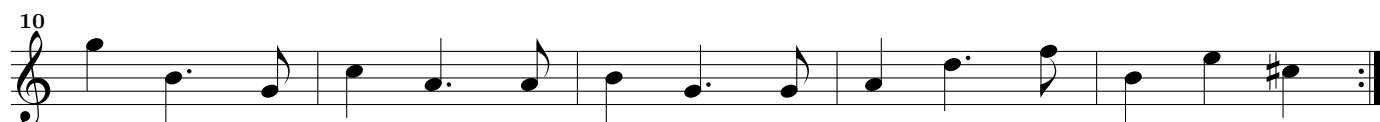
Courant

Tenor 2

3



Saraband



Gigue

