

Wache auf, meine Ehre

Christoph Graupner

7

13

20

27

33

44

51

59

69

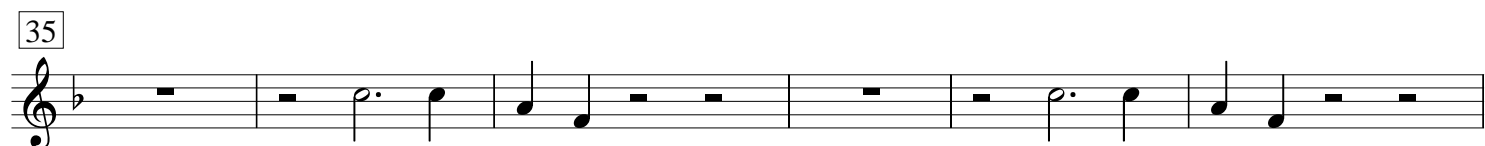
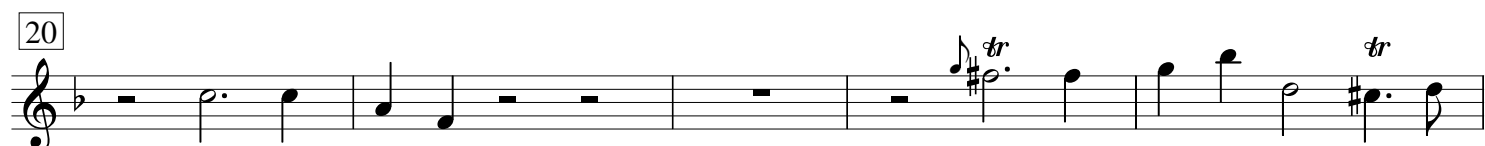
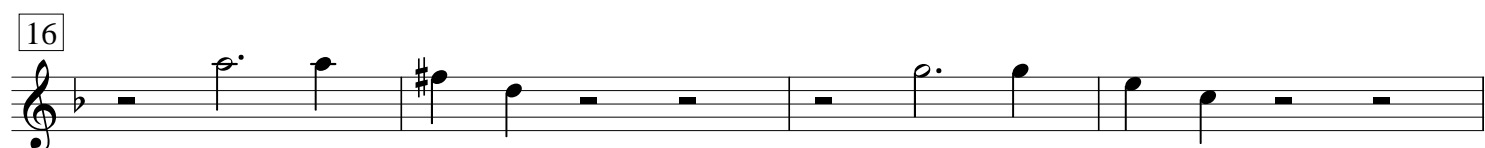
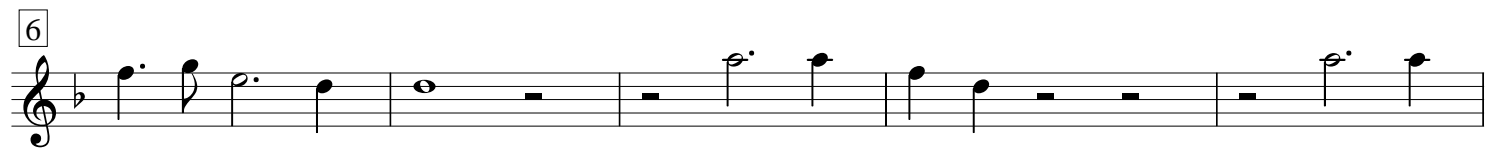
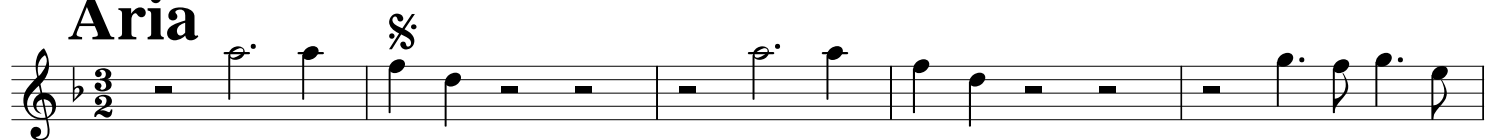
79

85

[tr]

Detailed description: This image shows a page of musical notation for the piece 'Wache auf, meine Ehre' by Christoph Graupner. The score is written in a single system with 11 staves. The key signature is one flat (B-flat) and the time signature is 3/8. The music is characterized by frequent sixteenth-note patterns and rests. Measure numbers are indicated at the beginning of each staff: 7, 13, 20, 27, 33, 44, 51, 59, 69, 79, and 85. Specific musical features include a triplet of eighth notes in measure 33, a double bar line in measure 44, and a trill marked with [tr] in measure 85. The notation includes various note values, rests, and articulation marks.

Aria



da capo

Chor

[Grave]



5 *Allegro*



8 *Grave*



11



15 *Allegro*



18



20



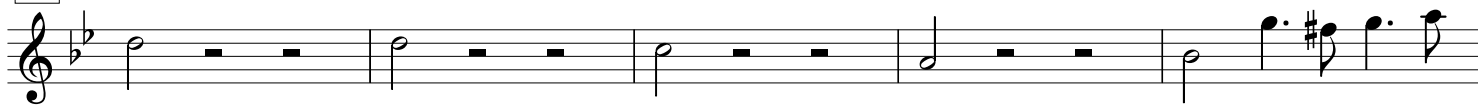
33



38



44



49 *Allegro*



52

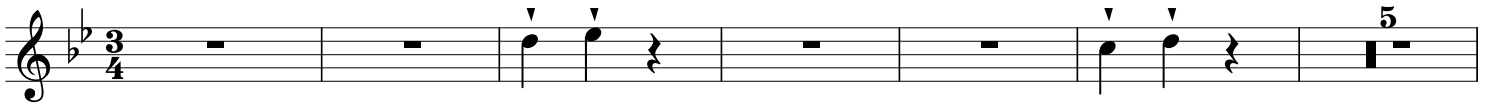


54

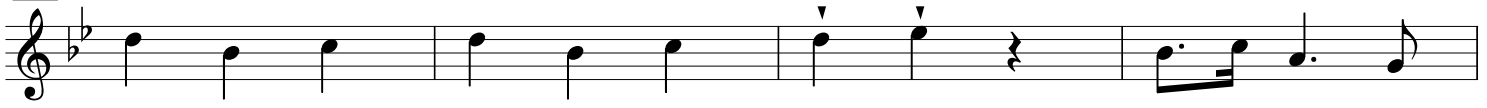
Adagio



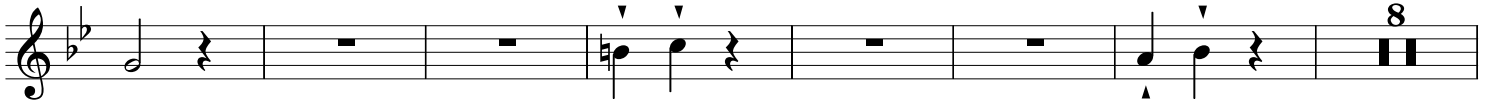
Aria



12



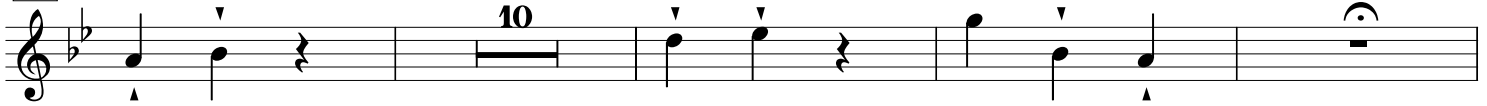
16



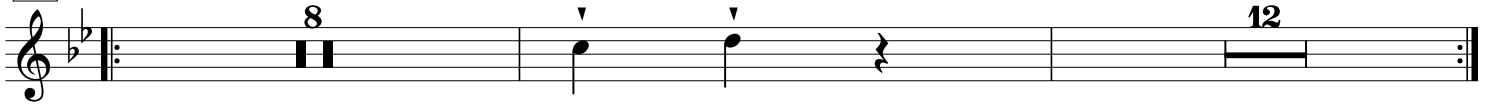
31



43



57



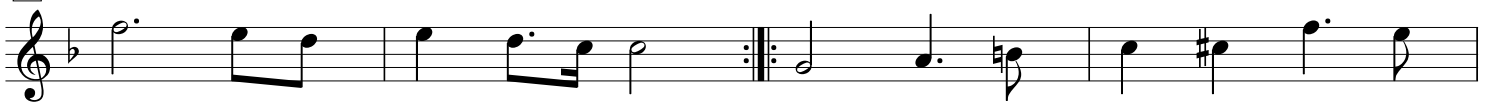
Duetto tacet

da capo

Choral



6



10



15

