

DIALOGUE for BRASS

(from: *L'Organo Suonarino Opera ventesima quinta*)

for Brass Quartet & Timpani

Score (00':47'')

Adriano Banchieri (1568 - 1634)

Arr. Michel Rondeau

Moderato $\text{♩} = 100$

Trumpet in C 1

Trumpet in C 2

Trombone

Bass Trombone

Timpani

Detailed description: This system contains measures 1 through 6 of the score. It features five staves: Trumpet in C 1, Trumpet in C 2, Trombone, Bass Trombone, and Timpani. The key signature is one flat (B-flat) and the time signature is common time (C). The tempo is marked 'Moderato' with a quarter note equal to 100 beats per minute. The music begins with a rest in measure 1. In measure 2, the Trombone and Bass Trombone play a half note G2, while the Timpani plays a half note G2. In measure 3, the Trumpet in C 1 and 2 play a half note G2, and the Trombone and Bass Trombone play a half note G2. In measure 4, the Trumpet in C 1 and 2 play a half note G2, and the Trombone and Bass Trombone play a half note G2. In measure 5, the Trumpet in C 1 and 2 play a half note G2, and the Trombone and Bass Trombone play a half note G2. In measure 6, the Trumpet in C 1 and 2 play a half note G2, and the Trombone and Bass Trombone play a half note G2.

C Tpt. 1

C Tpt. 2

Tbn.

B. Tbn.

Timp.

Detailed description: This system contains measures 7 through 12 of the score. It features five staves: C Tpt. 1, C Tpt. 2, Tbn., B. Tbn., and Timp. The key signature is one flat (B-flat) and the time signature is common time (C). The music begins with a rest in measure 7. In measure 8, the C Tpt. 1 and 2 play a half note G2, and the Tbn. and B. Tbn. play a half note G2. In measure 9, the C Tpt. 1 and 2 play a half note G2, and the Tbn. and B. Tbn. play a half note G2. In measure 10, the C Tpt. 1 and 2 play a half note G2, and the Tbn. and B. Tbn. play a half note G2. In measure 11, the C Tpt. 1 and 2 play a half note G2, and the Tbn. and B. Tbn. play a half note G2. In measure 12, the C Tpt. 1 and 2 play a half note G2, and the Tbn. and B. Tbn. play a half note G2.

DIALOGUE for BRASS - Banchieri - Score

14

C Tpt. 1

C Tpt. 2

Tbn.

B. Tbn.

Timp.

20

C Tpt. 1

C Tpt. 2

Tbn.

B. Tbn.

Timp.

DIALOGUE for BRASS - Banchieri - Score

25

C Tpt. 1

C Tpt. 2

Tbn.

B. Tbn.

Timp.

30

C Tpt. 1

C Tpt. 2

Tbn.

B. Tbn.

Timp.

DIALOGUE for BRASS - Banchieri - Score

35

C Tpt. 1

C Tpt. 2

Tbn.

B. Tbn.

35

Timp.

DIALOGUE for BRASS

(from: *L'Organo Suonarino Opera ventesima quinta*)

for Brass Quartet & Timpani

C Trumpets

Adriano Banchieri (1568 - 1634)

Arr. Michel Rondeau

Moderato $\text{♩} = 100$

Measures 1-7 of the C Trumpets part. The music is in a 2/4 time signature with a key signature of one flat (B-flat). The first staff (treble clef) features a melodic line with a long note in measure 1, followed by a series of eighth notes and a quarter note in measure 2, and a half note in measure 3. The second staff (bass clef) provides a harmonic accompaniment with a steady eighth-note pattern.

Measures 8-15 of the C Trumpets part. Measure 8 begins with a new melodic phrase in the first staff, characterized by a dotted quarter note followed by an eighth note. The second staff continues with a rhythmic accompaniment of eighth notes.

Measures 16-21 of the C Trumpets part. Measures 16-17 show a melodic line in the first staff with a series of eighth notes. Measures 18-21 feature a more complex rhythmic pattern with sixteenth notes in the first staff, while the second staff maintains a consistent eighth-note accompaniment.

Measures 22-27 of the C Trumpets part. Measures 22-24 are marked with a whole rest in the first staff, indicating a rest for the trumpets. In measures 25-27, the first staff resumes with a melodic line of eighth notes, and the second staff continues with its accompaniment.

Measures 28-33 of the C Trumpets part. The first staff features a melodic line with eighth notes and quarter notes. The second staff provides a rhythmic accompaniment with eighth notes and quarter notes.

Measures 34-41 of the C Trumpets part. Measures 34-35 show a melodic line in the first staff with eighth notes. Measures 36-37 feature a melodic line with a half note and a quarter note. Measures 38-41 conclude the piece with a final melodic phrase in the first staff and a sustained accompaniment in the second staff.

DIALOGUE for BRASS

(from: *L'Organo Suonarino Opera ventesima quinta*)

for Brass Quartet & Timpani

Bb Trumpets

Adriano Banchieri (1568 - 1634)

Arr. Michel Rondeau

Moderato $\text{♩} = 100$

Measures 1-7 of the Bb Trumpet part. The music is in G major (one sharp) and 4/4 time. The first staff (treble clef) features a melodic line with a slur over measures 1-4 and a rest in measure 5. The second staff (bass clef) provides harmonic support with a similar slur and rests.

Measures 8-15. The melodic line in the first staff continues with a slur over measures 8-10 and a rest in measure 11. The bass staff continues with harmonic accompaniment.

Measures 16-21. The first staff begins with a rest in measure 16, followed by a melodic line. The bass staff continues with harmonic accompaniment.

Measures 22-27. The first staff has rests in measures 22-24, then a melodic line. The bass staff continues with harmonic accompaniment.

Measures 28-33. The first staff has a melodic line throughout. The bass staff continues with harmonic accompaniment.

Measures 34-41. The first staff has a melodic line throughout. The bass staff continues with harmonic accompaniment. The piece concludes with a double bar line in measure 41.

DIALOGUE for BRASS

(from: *L'Organo Suonarino Opera ventesima quinta*)

for Brass Quartet & Timpani

Trombones

Adriano Banchieri (1568 - 1634)

Arr. Michel Rondeau

Moderato $\text{♩} = 100$

Measures 1-7 of the Trombone part. The music is in a 2/4 time signature with a key signature of one flat (B-flat). The tempo is Moderato with a quarter note equal to 100 beats per minute. The notation consists of two staves: a tenor staff (top) and a bass staff (bottom). The melody in the tenor staff begins with a half rest, followed by a series of quarter notes: G2, F2, E2, D2, C2, B1, A1, G1, F1, E1, D1, C1. The bass staff provides a harmonic accompaniment with half notes and rests.

Measures 8-15 of the Trombone part. The melody in the tenor staff continues with quarter notes: B1, A1, G1, F1, E1, D1, C1, B1, A1, G1, F1, E1, D1, C1. The bass staff continues with half notes and rests.

Measures 16-22 of the Trombone part. The melody in the tenor staff continues with quarter notes: B1, A1, G1, F1, E1, D1, C1, B1, A1, G1, F1, E1, D1, C1. The bass staff continues with half notes and rests.

Measures 23-28 of the Trombone part. The melody in the tenor staff continues with quarter notes: B1, A1, G1, F1, E1, D1, C1, B1, A1, G1, F1, E1, D1, C1. The bass staff continues with half notes and rests.

Measures 29-34 of the Trombone part. The melody in the tenor staff continues with quarter notes: B1, A1, G1, F1, E1, D1, C1, B1, A1, G1, F1, E1, D1, C1. The bass staff continues with half notes and rests.

Measures 35-38 of the Trombone part. The melody in the tenor staff continues with quarter notes: B1, A1, G1, F1, E1, D1, C1, B1, A1, G1, F1, E1, D1, C1. The bass staff continues with half notes and rests.

DIALOGUE for BRASS

(from: *L'Organo Suonarino Opera ventesima quinta*)

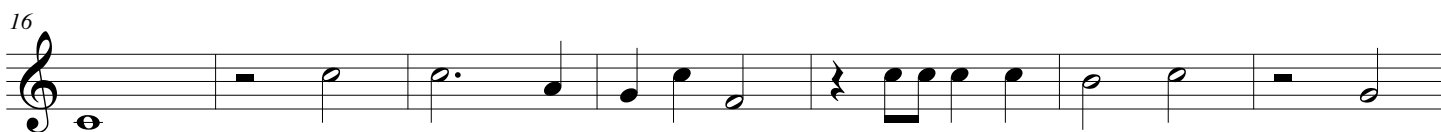
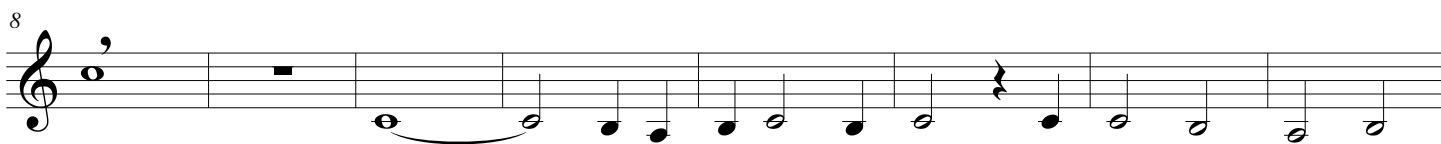
for Brass Quartet & Timpani

F Horn (Trombone)

Adriano Banchieri (1568 - 1634)

Arr. Michel Rondeau

Moderato $\text{♩} = 100$



DIALOGUE for BRASS

(from: *L'Organo Suonarino Opera ventesima quinta*)

for Brass Quartet & Timpani

Adriano Banchieri (1568 - 1634)

Arr. Michel Rondeau

Timpani F-C

Moderato $\text{♩} = 100$

9

17

29

34