

Quatuor 2.
à

Flauto Traverso

Violino.

alto

&

Basso

Dall' Sgr. Simoni Dal Probelis.

Quatuor 2

Basso

allegro.

Handwritten musical notation on a single staff, featuring a treble clef, a key signature of one sharp (F#), and a 3/4 time signature. The notation includes various note values, rests, and dynamic markings such as *mf* and *ff*.

Handwritten musical notation on a single staff, continuing the piece with a treble clef, one sharp key signature, and 3/4 time signature. It features a *ff* dynamic marking.

Handwritten musical notation on a single staff, continuing the piece with a treble clef, one sharp key signature, and 3/4 time signature.

Handwritten musical notation on a single staff, continuing the piece with a treble clef, one sharp key signature, and 3/4 time signature. It includes a *3* marking above a note.

Handwritten musical notation on a single staff, continuing the piece with a treble clef, one sharp key signature, and 3/4 time signature.

Handwritten musical notation on a single staff, continuing the piece with a treble clef, one sharp key signature, and 3/4 time signature. It ends with a double bar line and the number *228*.

Handwritten musical notation on a single staff, starting with the tempo marking *Larghetto* and a 3/4 time signature. It features a treble clef and one sharp key signature.

Handwritten musical notation on a single staff, continuing the piece with a treble clef, one sharp key signature, and 3/4 time signature.

Handwritten musical notation on a single staff, continuing the piece with a treble clef, one sharp key signature, and 3/4 time signature. It includes *mf* and *ff* dynamic markings.

Handwritten musical notation on a single staff, continuing the piece with a treble clef, one sharp key signature, and 3/4 time signature. It includes *mf* and *ff* dynamic markings.

Handwritten musical notation on a single staff, continuing the piece with a treble clef, one sharp key signature, and 3/4 time signature. It includes a *9* marking above a note and ends with a double bar line and the number *38*.

Handwritten signature or name, possibly *Galli*, written in a cursive script.

Rondeau.



allegro



Flauto.

Quatuor 2.

flauto

Handwritten musical notation on a single staff, featuring a treble clef, a key signature of one sharp (F#), and a 3/8 time signature. The notation includes various rhythmic values such as eighth and sixteenth notes, and rests.

allegro

Handwritten musical notation on a single staff, continuing the piece with similar rhythmic patterns and dynamics.

Handwritten musical notation on a single staff, featuring a treble clef, a key signature of one sharp (F#), and a 3/8 time signature. The notation includes various rhythmic values such as eighth and sixteenth notes, and rests.

Handwritten musical notation on a single staff, featuring a treble clef, a key signature of one sharp (F#), and a 3/8 time signature. The notation includes various rhythmic values such as eighth and sixteenth notes, and rests.

Handwritten musical notation on a single staff, featuring a treble clef, a key signature of one sharp (F#), and a 3/8 time signature. The notation includes various rhythmic values such as eighth and sixteenth notes, and rests.

Handwritten musical notation on a single staff, featuring a treble clef, a key signature of one sharp (F#), and a 3/8 time signature. The notation includes various rhythmic values such as eighth and sixteenth notes, and rests.

Handwritten musical notation on a single staff, featuring a treble clef, a key signature of one sharp (F#), and a 3/8 time signature. The notation includes various rhythmic values such as eighth and sixteenth notes, and rests.

Handwritten musical notation on a single staff, featuring a treble clef, a key signature of one sharp (F#), and a 3/8 time signature. The notation includes various rhythmic values such as eighth and sixteenth notes, and rests.

Handwritten musical notation on a single staff, featuring a treble clef, a key signature of one sharp (F#), and a 3/8 time signature. The notation includes various rhythmic values such as eighth and sixteenth notes, and rests.

Handwritten musical notation on a single staff, featuring a treble clef, a key signature of one sharp (F#), and a 3/8 time signature. The notation includes various rhythmic values such as eighth and sixteenth notes, and rests.

Handwritten musical notation on a single staff, featuring a treble clef, a key signature of one sharp (F#), and a 3/8 time signature. The notation includes various rhythmic values such as eighth and sixteenth notes, and rests.

Handwritten musical notation on a single staff, featuring a treble clef, a key signature of one sharp (F#), and a 3/8 time signature. The notation includes various rhythmic values such as eighth and sixteenth notes, and rests.

Handwritten musical score, first system (measures 1-22). The notation is in treble clef with a key signature of one sharp (F#). It features a complex melodic line with many sixteenth and thirty-second notes, often beamed together. There are several trills and slurs throughout. The system ends with a double bar line and the number 22.

Larghetto

Handwritten musical score, second system (measures 23-37). The tempo marking *Larghetto* is written in a large, cursive hand. The notation continues with similar complexity to the first system, including many sixteenth notes and trills. The system ends with a double bar line and the number 37.

Handwritten musical score, third system (measures 38-39). The notation is in treble clef with a key signature of one sharp. It features a melodic line with slurs and a double bar line at the end of the system with the number 38. A dynamic marking *fta* is written below the first measure.

Tutti

Rondeau.

allegro.

195



Violino

Quatuor 2.

violino

Handwritten musical score for violin, titled "Quatuor 2." and "violino". The score is written on 12 staves in G major (one sharp) and 3/8 time. The tempo is marked "allegro". The notation includes various rhythmic values, accidentals, and dynamic markings such as *pizzicato* and *col arco*. The manuscript shows signs of age, with some ink bleed-through and a slightly worn paper texture.

Handwritten musical score on ten staves. The notation includes treble clefs, a key signature of one sharp (F#), and a 3/4 time signature. The music features a variety of rhythmic patterns, including eighth and sixteenth notes, and rests. There are several dynamic markings: *pp* (pianissimo) and *ff* (fortissimo) in the first staff, and *pp* in the sixth staff. There are also some performance instructions like *tr* (trill) and *acc* (accents). The paper is aged and shows some staining.

Larghetto 228

Handwritten musical score on four staves. The notation includes treble clefs, a key signature of one sharp (F#), and a 3/4 time signature. The music features a variety of rhythmic patterns, including eighth and sixteenth notes, and rests. There are several dynamic markings: *pp* (pianissimo) in the second staff, and *pp* in the third staff. There are also some performance instructions like *tr* (trill) and *acc* (accents). The paper is aged and shows some staining.

Rondeau

allegro

95



Alto Viola.

Quatuor 2.

alto viola



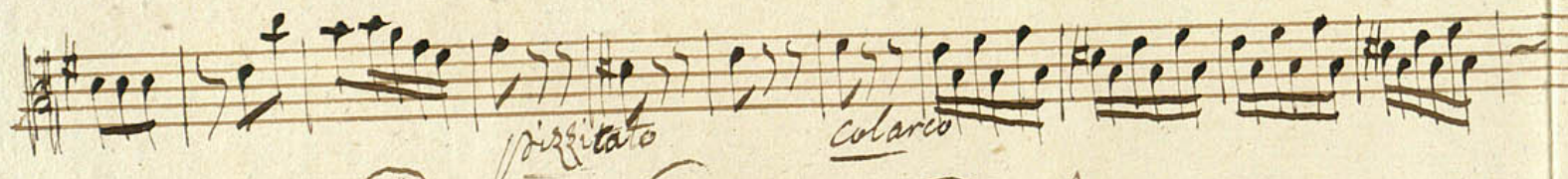
allegro



pizzicato

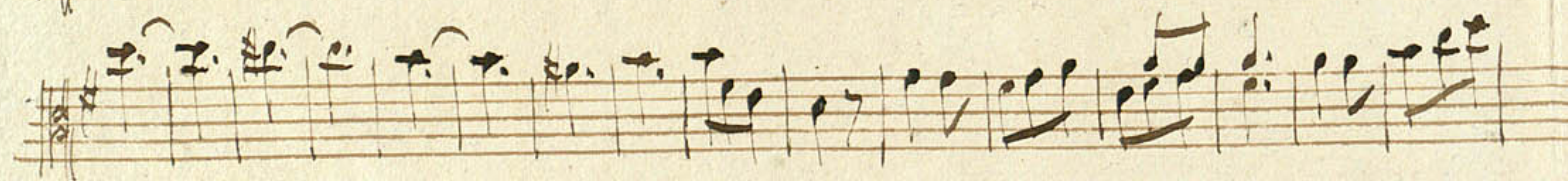


col arco



pizzicato

col arco



Handwritten musical notation on a five-line staff, featuring various note values and rests.

Handwritten musical notation on a five-line staff, including dynamic markings such as *pp* and *ff*.

Handwritten musical notation on a five-line staff, showing complex rhythmic patterns.

Handwritten musical notation on a five-line staff, with a '2' marking above a measure.

Handwritten musical notation on a five-line staff, featuring a series of repeated rhythmic figures.

Handwritten musical notation on a five-line staff, concluding with a double bar line.

Handwritten musical notation on a five-line staff, beginning with the tempo marking *Larghetto* and a 3/4 time signature.

Handwritten musical notation on a five-line staff, including dynamic markings like *pp*.

Handwritten musical notation on a five-line staff, showing melodic lines.

Handwritten musical notation on a five-line staff, ending with a double bar line and the number 38.

Rondeau.

Handwritten musical notation on a single staff, beginning with a treble clef, a key signature of one sharp (F#), and a 2/4 time signature. The music consists of a series of eighth and sixteenth notes, some beamed together. The word *allegro* is written below the staff.

Handwritten musical notation on a single staff, continuing the piece with various rhythmic patterns and rests.

Handwritten musical notation on a single staff, featuring a *pp* dynamic marking and a *for* marking at the end of the line.

Handwritten musical notation on a single staff, showing a change in rhythm and dynamics.

Handwritten musical notation on a single staff, continuing the melodic and rhythmic development.

Handwritten musical notation on a single staff, featuring a series of sixteenth-note passages.

Handwritten musical notation on a single staff, showing a change in key signature to one flat (F).

Handwritten musical notation on a single staff, continuing the piece with various rhythmic patterns.

Handwritten musical notation on a single staff, featuring a ~~scribble~~ at the beginning and a *for* marking at the end.

Handwritten musical notation on a single staff, ending with a double bar line and the number 95.

