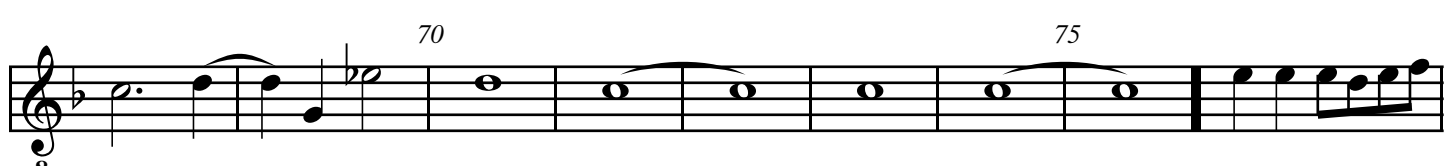
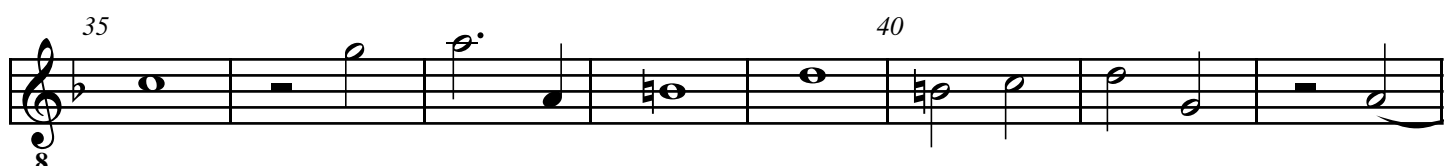
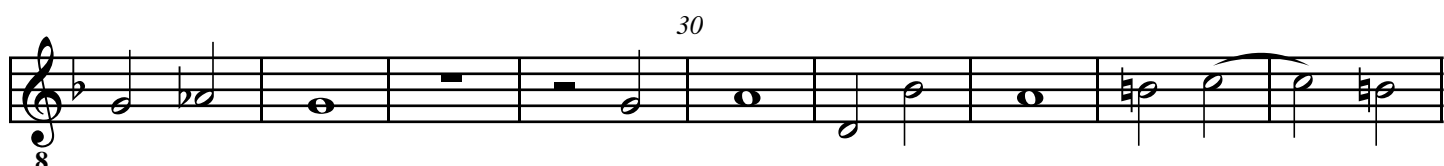
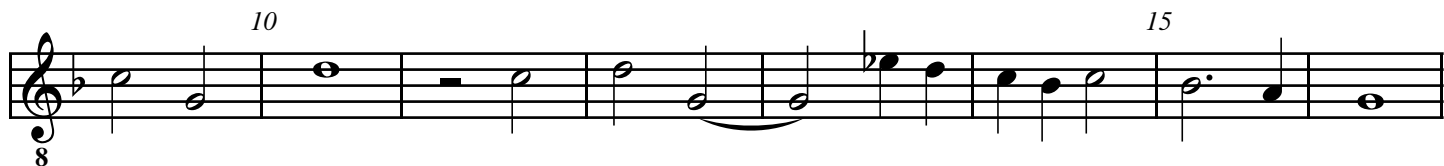


# Fantasia à 6

Tenor 2  
Tr Tr T T B B

Alfonso Ferrabosco II  
VdGS# 2



Musical staff 1, measures 75-80. The staff begins with a treble clef, a key signature of one flat (B-flat), and a common time signature (C). The music consists of eighth and sixteenth notes, with a fermata over the eighth measure. Measure numbers 80 and 85 are indicated above the staff.

Musical staff 2, measures 81-90. The staff continues with eighth and sixteenth notes. A triplet of eighth notes is present in measure 89. Measure numbers 85 and 90 are indicated above the staff.

Musical staff 3, measures 91-95. The staff features a mix of eighth and sixteenth notes. Measure numbers 95 and 100 are indicated above the staff.

Musical staff 4, measures 96-100. The staff contains eighth and sixteenth notes. Measure numbers 100 and 105 are indicated above the staff.

Musical staff 5, measures 101-115. The staff includes rests, eighth notes, and sixteenth notes. A fermata is placed over a group of notes in measure 115. Measure numbers 105, 110, and 115 are indicated above the staff.

Musical staff 6, measures 116-120. The staff features eighth and sixteenth notes. Measure numbers 120 and 125 are indicated above the staff.

Musical staff 7, measures 121-130. The staff contains eighth and sixteenth notes. Measure numbers 125 and 130 are indicated above the staff.

Musical staff 8, measures 131-135. The staff features eighth and sixteenth notes. Measure numbers 130 and 135 are indicated above the staff. The piece concludes with a double bar line.