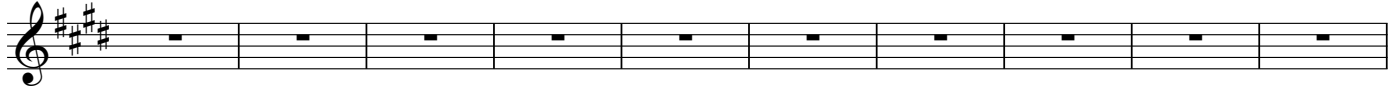


Musical score system 1, measures 1-4. The system consists of five staves. The top four staves are vocal staves in treble clef, and the bottom staff is a piano accompaniment in bass clef. The key signature is three sharps (F#, C#, G#) and the time signature is common time (C). All vocal staves contain whole rests. The piano accompaniment features a melodic line in the right hand and a rhythmic accompaniment in the left hand.

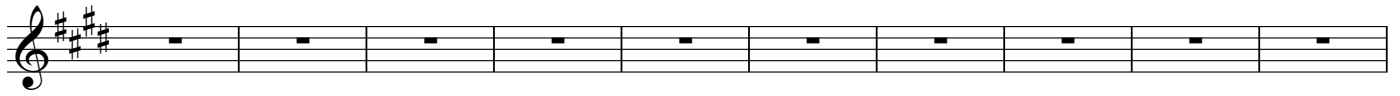
Musical score system 2, measures 5-11. The system consists of five staves. The top four staves are vocal staves in treble clef, and the bottom staff is a piano accompaniment in bass clef. The key signature is three sharps (F#, C#, G#) and the time signature is common time (C). All vocal staves contain whole rests. The piano accompaniment features a melodic line in the right hand and a rhythmic accompaniment in the left hand.

Musical score system 3, measures 12-19. The system consists of one staff in treble clef. The key signature is three sharps (F#, C#, G#) and the time signature is common time (C). The staff contains whole rests for all measures.

22



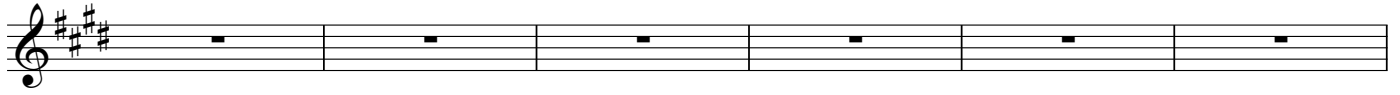
32



42



52



58

