

## Suite

## I

## Viola

Ernest Bloch

Lento (♩ = 84-92)

*misterioso*

*pp*

*breve*

*mp*

*f*

Meno lento (♩ = circa 60)

*p espr.*

*animando*

*cresc. poco a poco*

*f*

*a tempo*

13

13



# Viola

*poco a poco più lento*

*f* *mf*

④ *Tempo I<sup>o</sup>* *III<sup>a</sup>*

*pp*

*dim.* ⑤ *poco animando*

*Allegro* (♩ = 120 - 132)

⑥ *gioioso* *f marcato*

*ritmato* (marc.)

*della punta* *f ritmato*

*ritmato sempre* ⑦ *marc.*

*sul ponticello* *modo ordinario*

*p* *dim.*

*III* *mp pronunziato* *mf marc.*

⑧ *cresc.*



## Viola

*f energico*

*poco meno mosso*

*f appass.*

*Animato*

*ff*

*p dolce*

*rit.*

*mf cantabile*

*mf*

*f*

Measures 9-12 are shown. Measure 9 begins with a circled '9' and a fermata. Measure 10 begins with a circled '10' and the tempo marking 'Animato'. Measure 11 begins with a circled '11' and the tempo marking 'a tempo'. Measure 12 begins with a circled '12'.

# Viola

Musical score for Viola, measures 13 through 19. The score is written in treble and bass staves, with various dynamics and tempo markings.

Measures 13-14: *mf*, *f*, *mf*, *ff*.

Measure 15: *ff*, *furioso*.

Measure 16: *sf*.

Measure 17: *(largamente)*, *3*, *3*, *3*, *3*, *3*, *3*, *3*.

Measure 18: *molto allarg.*, *Meno mosso*, *poco più tranquillo*, *mf*.

Measure 19: *mezza voce*, *dim.*, *p*, *dolce*, *Moderato* (♩ = 69), *rall.*, *p dim.*, *mp*.

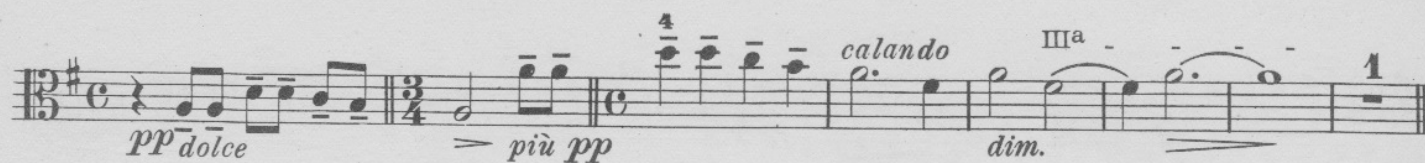
Measure 20: *(poco più animato)*, *poco f marc.*.

Measure 21: *mp pesante*, *dim.*.

Measure 22: *1*, *1*.



## Viola

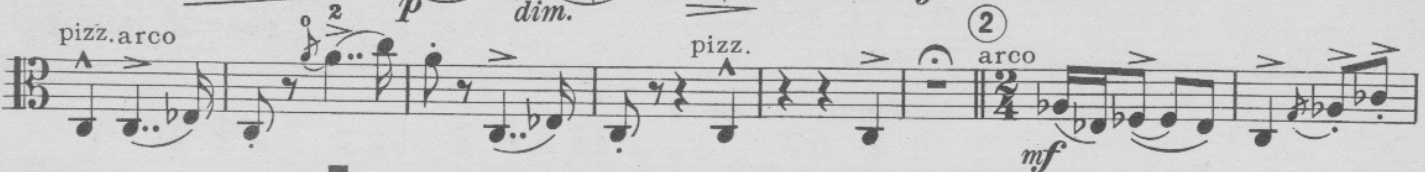


(20) Largamente (♩ = 69)



## II

Allegro ironico (♩ = 120)





Grave (moderato) (♩ = 58)

modo ordin.

*pizz.* *col legno marcato* *arco* *3* *3* *mf* *mf espr.* *marc.*

*mf* *3* *dolce* *a tempo* *mf*

*IVa* *IIIa* *1* *2* *Ia* *animando e cresc.*

*f* *breve* *IVa* *5* *1* *mf* *Tempo dell' allegro*

*marc.* *p* *1* *1*

*6* *f* *mf*

*poco dim. ma sempre pronunziato* *p*

*7* *cresc.* *mf*

*(poco allarg.) (ad lib.)* *8* *Poco sostenuto* (♩ = circa 88) *f* *3*

*accel.* *3* *3* *8* *poco rit.* *1* *a tempo*



## Viola

*breve a tempo* Cadenza *poco a poco accel.*

*poco a poco sul ponticello* *Tempo dell'allegro*

*modo ordinario* *f accel.*

*ff*

⑩ *a tempo (Allegro ironico)* *f* *IIa* *IIIa*

*3 cresc. e accel.*

*ff*

⑪ *a tempo* *mf cresc.* *ff*

*calando* *sempre ff* *meno* *f*

*Grave (♩ = 58)* *3* *pespr.* *IV* *f* *Animato*

*ff* *Solo* *pizz.* *sffz*

*accelerando sin' al fine*



# Viola

## III

Lento (♩ = circa 50)

1 *IIa*  
con sord. *mf*

*poco cresc.* *p dolciss.* *IIa* *dim.*

*IVa* *IIIa* *(9) Ia* *poco rit. breve*  
*mp* *espr. molto* *3* *mf*

2 *a tempo*  
*mf molto espr.*

3 *mf* *3* *mf* *IIIa*

4 *f = mp 3* *3* *4 3 4* *5* *dolce (mp)*

*rit. molto* *IIa* 6 *a tempo* *mp* *dim.*

7 *f molto espr.* *poco*

## IV

Molto vivo (♩ = 152)

4 *senza sord.* *f*

3 *martellato* *f*

8



## Viola

① *f*

② *f*

③

④ *ff* *f* IIIa IVa

⑤ *mf*

⑥ *ff* *f*

⑦ *f* *ff*

⑧ *f espr.*

Detailed description: This page contains the first 24 measures of a musical score for the Viola part. The music is written in a single system with ten staves. The key signature has two sharps (F# and C#). The time signature changes from 3/4 to 2/4 at measure 10, and back to 3/4 at measure 18. The score includes various musical notations such as slurs, accents, and dynamic markings. Fingerings are indicated by numbers 1-5 above notes. Measure numbers 1 through 8 are placed above the first staff of each measure group. The piece concludes with a double bar line at the end of measure 24.



9

*cresc.*

8

*f*

10

*mf*

*f*

*cresc.*

*ff*

*lunga*

11 Moderato assai (♩ = circa 80)

*mf*

*f*

12

*poco a poco più animato e appassionato*

13

*appass.*

Largamente (♩ = 66)

*ff*



## Viola

(14) *V* *f* *allarg.* Animato (non troppo) (♩ = 444-452) *p* *mf* 6

3 *mf* (15) *sf*

1

(16) *f*

7 3 1

(17) *mf*

(18) *cresc.*

11 (19) *f* *mf*

(20) *marc.*



(21) Presto

*f*

(22) *ff*

III<sup>a</sup>

(23) 5 *mf cresc.* *poco allarg.*

(24) Largamente (♩ = 66) *fff*

(25) *p*

(26) *f* *f appass.* *dolce* *p*

*a tempo* *mp*

*caloroso* (27) *mf* *ff*

*animato* *vivo* *Molto vivo* (♩ = 160) *animando sin' al fine* *mf cresc. poco a poco*

*ff*