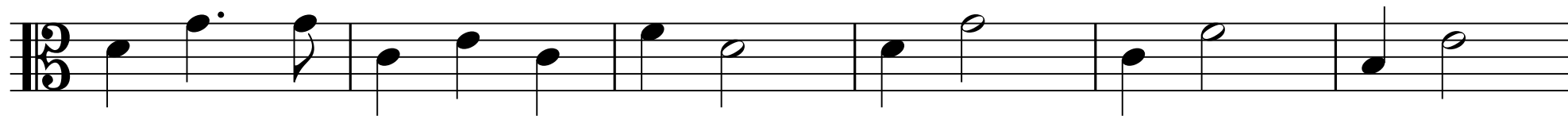


Viola

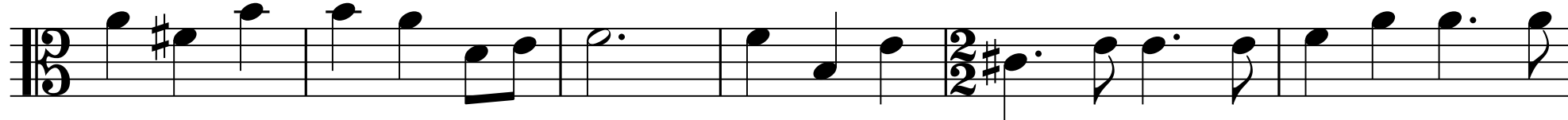
42



48



54



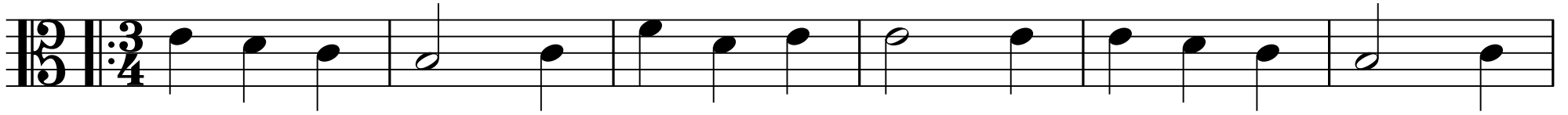
60



Minuet, qui se joue alternativement avec le suivant

Viola

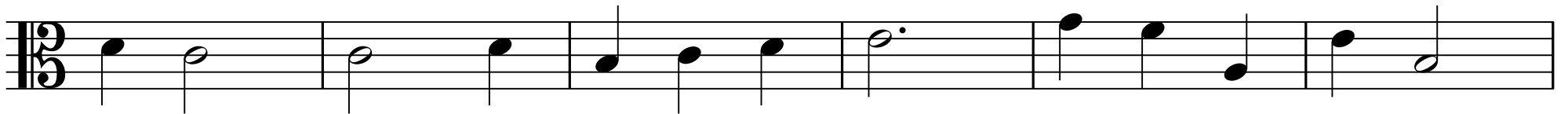
1



7



13



19



V.S.

7

Viola

Trio

25

8

12

Musical staff with treble clef, key signature of two sharps (F# and C#), and a 6/8 time signature. The staff contains a first ending bracket from measure 25 to 32, a repeat sign, a second ending bracket from measure 33 to 40, and a final ending bracket from measure 41 to 42. The numbers 8 and 12 are placed above the staff to indicate the lengths of the first and second endings, respectively.

Air

Viola

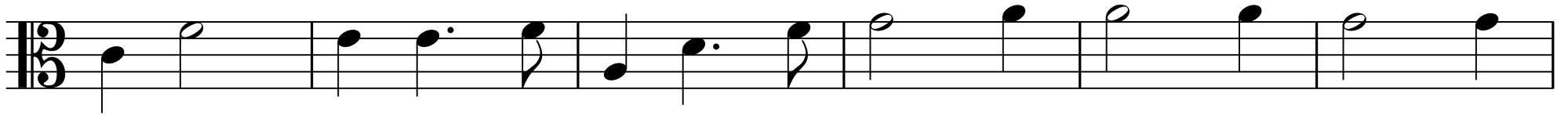
1



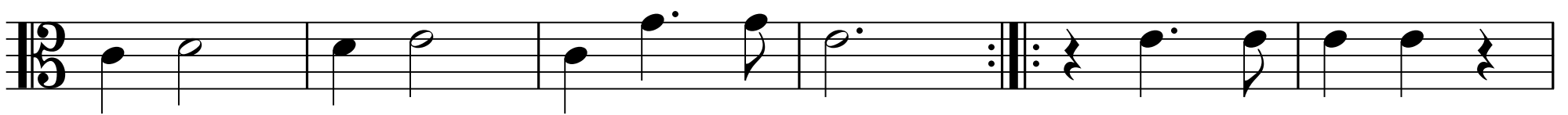
7



13



19

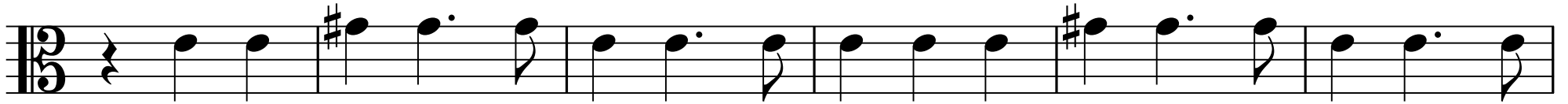


Chaconne

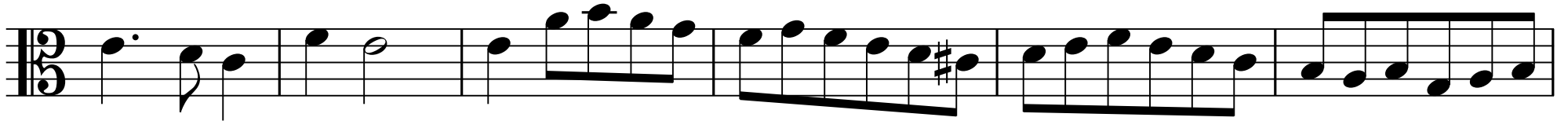
Viola

10

1



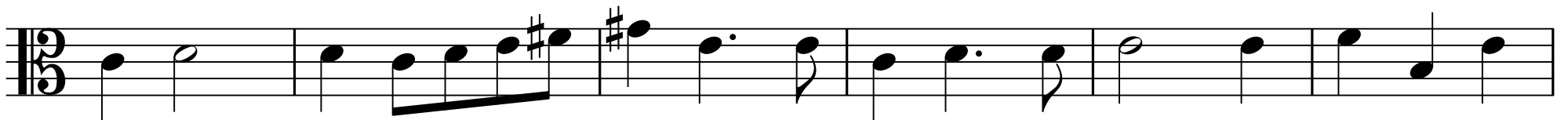
7



13



19



V.S.

11
25

Viola

Musical staff 1, measures 11-25. The staff is in bass clef with a 9/8 time signature. It contains a sequence of eighth and quarter notes, including some beamed eighth notes and a triplet of eighth notes.

31

Musical staff 2, measures 26-30. The staff is in bass clef with a 9/8 time signature. It contains a sequence of eighth and quarter notes, including a sharp sign (#) on a note in measure 28.

37

Musical staff 3, measures 31-36. The staff is in bass clef with a 9/8 time signature. It contains a sequence of eighth and quarter notes, including a sharp sign (#) on a note in measure 34.

43

Musical staff 4, measures 37-42. The staff is in bass clef with a 9/8 time signature. It begins with a sharp sign (#) on the first note. It contains a sequence of eighth and quarter notes, including some beamed eighth notes and a triplet of eighth notes.

13₇₃

Viola



Gavotte

1



7



11

