

BIBLIOTHÈQUE NATIONALE  
PARIS

---

**DÉPARTEMENT  
DE LA MUSIQUE**

Rés. Vm<sup>7</sup> 376

(2<sup>e</sup> livre)

R. 3933

---

- 52 569 bis -

° 12.5

Res. Unit 376

Premier livre de Vielle contenant six chansons avec l'indication de l'accord, et appliquer les sons selon la manière qu'on a accoutumé de jouer, le tout de la composition de Claude Gervaise, imprimé par la veuve de Pierre Attaignant demourant à Paris en la rue de la Harpe pres l'Eglise S. Cosme le 14 fevrier 1534 avec privilège de six pour neuf ans



in 4° oblong de 32 feuillets. (titre pris dans le catalogue de Bressan)

ce premier livre usaque (en juin 1868) ainsi que la fin du livre septième vers le feuillet 20 inclusif

V. 2713.

248

# Secōd liure contenant trois Galliards

## TROIS PAVANES, VINGT TROIS BRANLES

Tant en Simple, Que double, Double Basset, et en Neuf autres

En forme de Compaignie. Le tout ordonné par le Roy et le Royne

nonuellement imprimé en Musique à quatre parties, en un

liure seul, par Pierre Attaignant, Imprimeur

de Musique de la Cour de France, à Paris

en la Rue de la Harpe, pres

l'Eglise saint Cosme.



Par le Roy et le Royne, par le Roy et le Royne

Avec prouision de privilège de Roy, De nouvel obtenu par le Roy et le Royne

Pour les liures la par luy imprimés et qui l'imprimeront cy après jusques à fin de vie

Le Roy et le Royne  
par le Roy et le Royne  
Paris

SUPERIUS

Staff 1: Musical notation for Soprano with labels 'Basse' and 'danse' on the left.

Staff 2: Musical notation for Soprano with labels 'Basse' and 'danse' on the right.

Staff 3: Musical notation for Soprano.

Tenor

Staff 4: Musical notation for Tenor with labels 'Basse' and 'danse' on the left.

Staff 5: Musical notation for Tenor with labels 'Basse' and 'danse' on the right.

Staff 6: Musical notation for Tenor.

CONTRATENOR

Staff 1: Musical notation for Contralto with labels 'Basse' and 'danse' on the left.

Staff 2: Musical notation for Contralto with labels 'Basse' and 'danse' on the right.

Staff 3: Musical notation for Contralto.

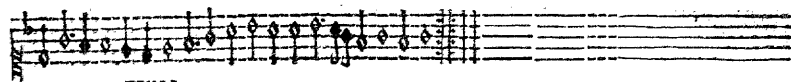
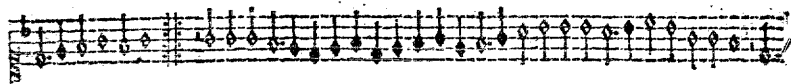
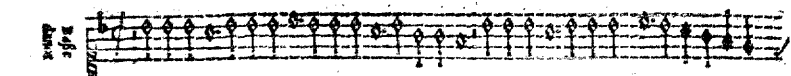
BASSUS.

Staff 4: Musical notation for Bass with labels 'Basse' and 'danse' on the left.

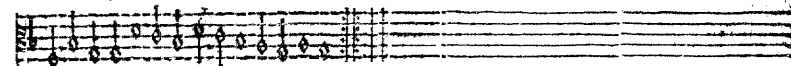
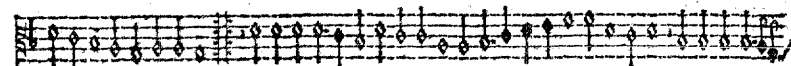
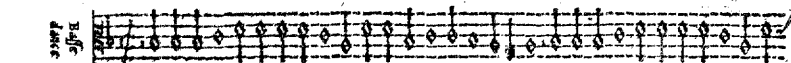
Staff 5: Musical notation for Bass with labels 'Basse' and 'danse' on the right.

Staff 6: Musical notation for Bass.

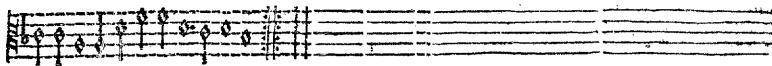
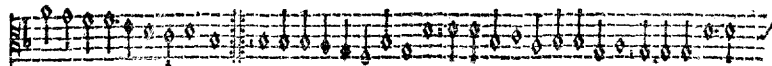
SUPERIUS



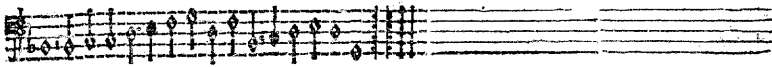
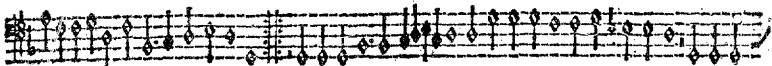
TENOR



CONTRATENOR



BASSVS



SVPERIVS

Ruffe  
danc

TENOR

Ruffe  
danc

CONTRATENOR

Fo III I

Ruffe  
danc

BASSVS

Ruffe  
danc

SUPERIUS

Basses  
 Amice

*Celle qui ma le nom d'amy donne*

Basses  
 Amice

Basses  
 Amice

TENOR

Basses  
 Amice

Basses  
 Amice

Basses  
 Amice

CONTRATENOR

Basses  
 Amice

Basses  
 Amice

Basses  
 Amice

BASSVS

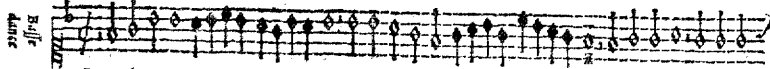
Basses  
 Amice

Basses  
 Amice

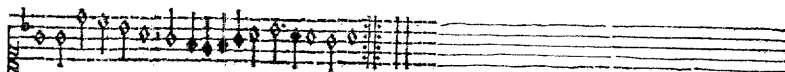
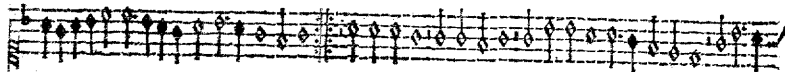
Basses  
 Amice

SUPERIUS

Basso  
Alto

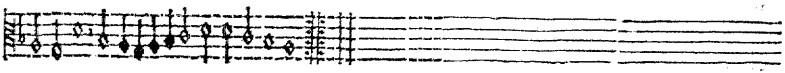
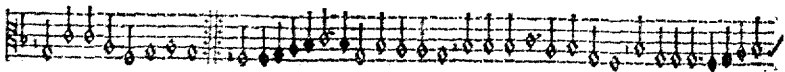
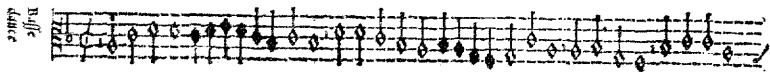


La uolunté



TENOR

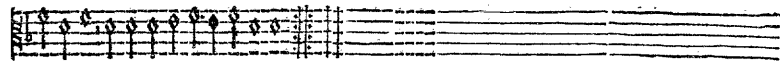
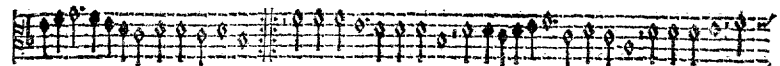
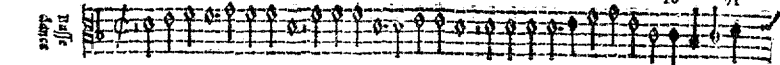
Basso  
Alto



CONTRATENOR

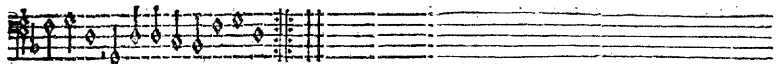
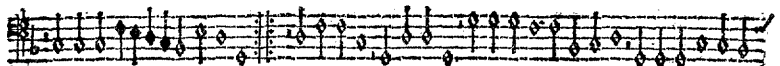
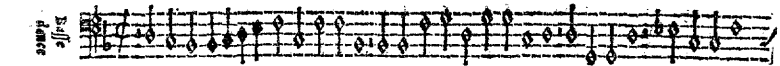
Fo 71

Basso  
Alto



BASSVS

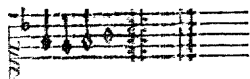
Basso  
Alto



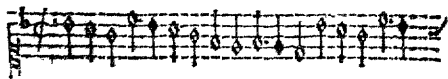


SUPERIUS

Tourdon

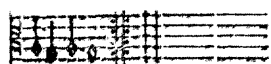
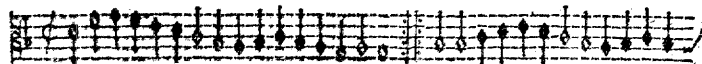


Tourdon

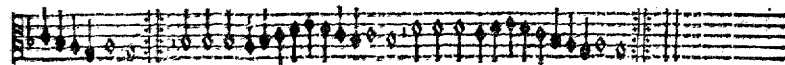
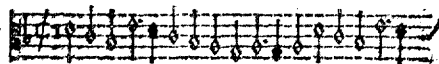


TENOR

Tourdon

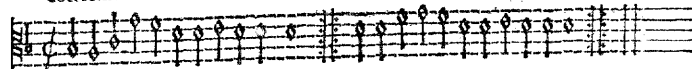


Tourdon

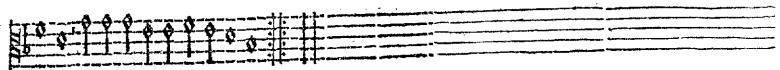
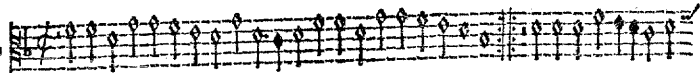


CONTRATENOR

Tourdon



Tourdon

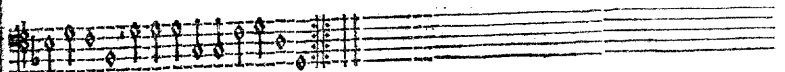
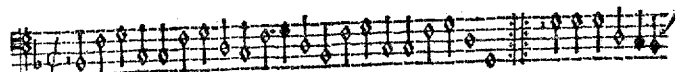


BASSVS.

Tourdon



Tourdon



**SUPERIUS**

Tou dion

Tou dion

**TENOR**

Tou dion

Tou dion

Tou dion

Tou dion

Detailed description: This block contains the musical notation for the Soprano and Tenor parts. The Soprano part is labeled 'SUPERIUS' and the Tenor part is labeled 'TENOR'. Both parts are written on a single staff with a treble clef. The Soprano part begins with a 'Tou dion' label. The Tenor part also begins with a 'Tou dion' label. The notation includes various note values, rests, and bar lines. There are several measures of music, with some measures containing multiple notes. The overall style is that of a traditional choral score.

**CONTRATENOR**

Tou dion

Tou dion

**BASSUS**

Tou dion

Tou dion

Tou dion

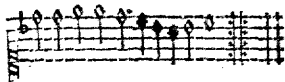
Tou dion

*Es viii*

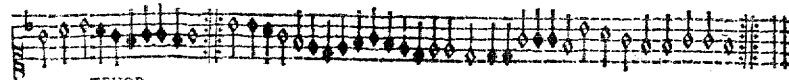
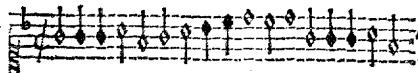
Detailed description: This block contains the musical notation for the Contralto and Bass parts. The Contralto part is labeled 'CONTRATENOR' and the Bass part is labeled 'BASSUS'. Both parts are written on a single staff with a bass clef. The Contralto part begins with a 'Tou dion' label. The Bass part also begins with a 'Tou dion' label. The notation includes various note values, rests, and bar lines. There are several measures of music, with some measures containing multiple notes. The overall style is that of a traditional choral score. The text 'Es viii' is written at the end of the Contralto part.

SUPERIUS

Branle

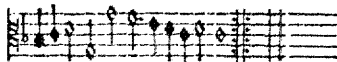
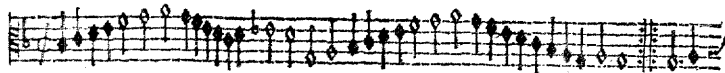


Branle

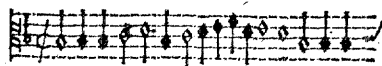


TENOR

Branle



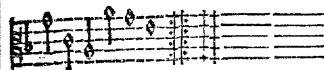
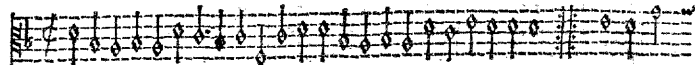
Branle



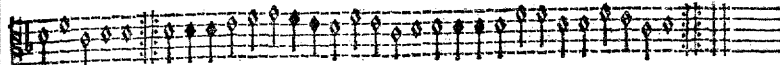
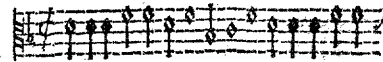
CONTRATENOR

Fo IX

Branle

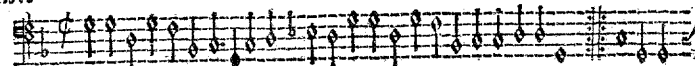


Branle

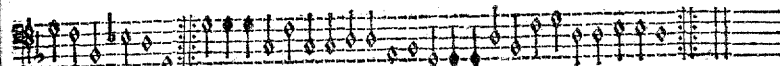
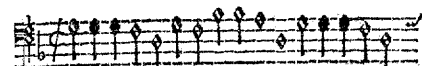


BASSVS

Branle

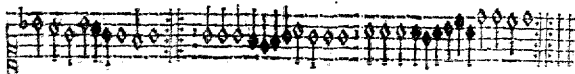


Branle

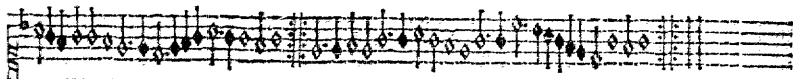
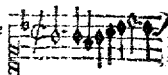


SPERIVS

Tourbillon

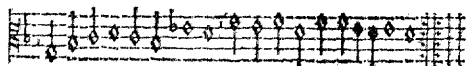
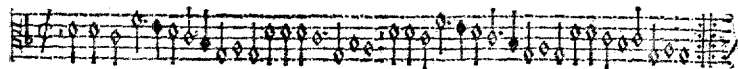


Braille

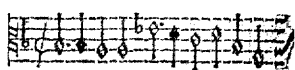


TENOR

Tourbillon



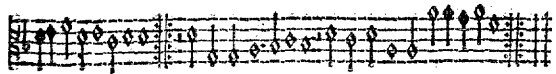
Braille



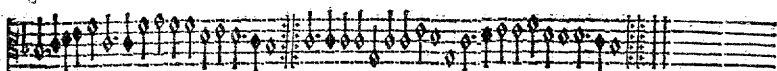
CONTRATENOR

Fo X

Tourbillon

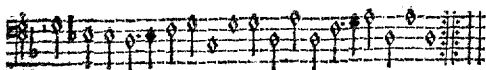
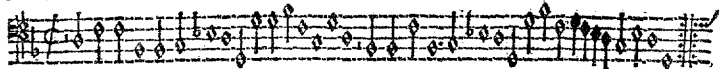


Braille

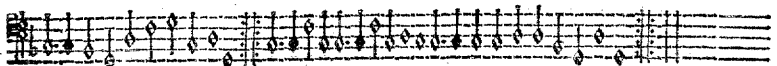
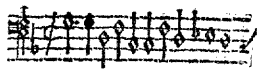


BASSVS

Tourbillon


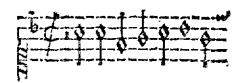


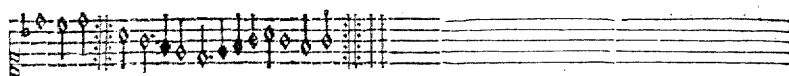
Braille




SUPERIUS

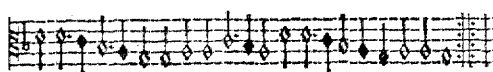
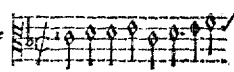
Branle 

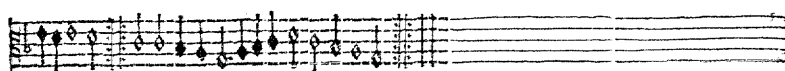
 Branle 



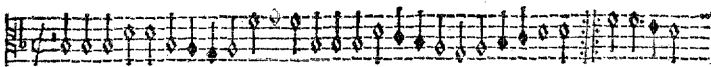
TENOR

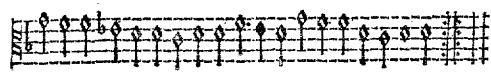
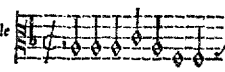
Branle 

 Branle 



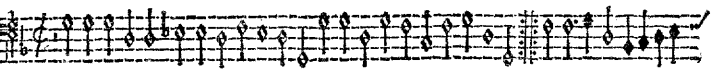
CONTRATENOR

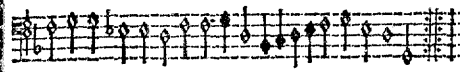
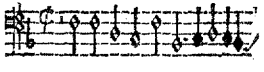
Branle 

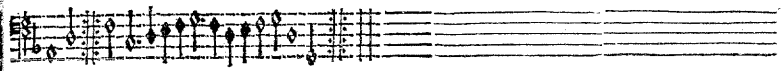
 Branle 



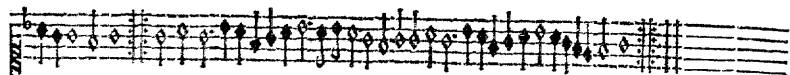
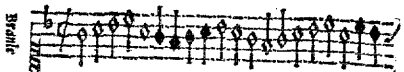
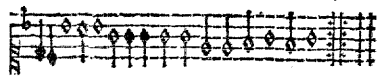
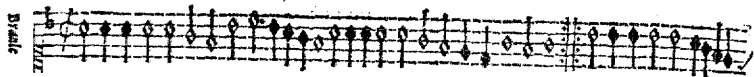
BASSVS.

Branle 

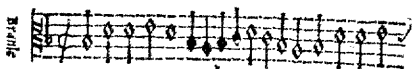
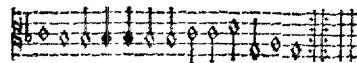
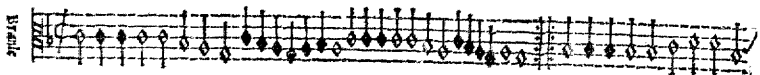
 Branle 



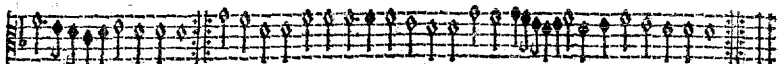
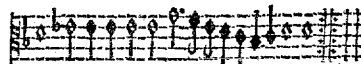
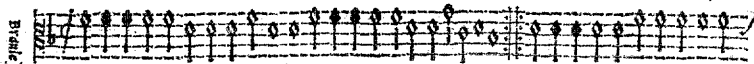
SPÉRIUS



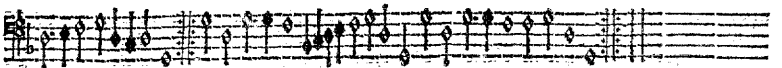
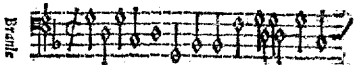
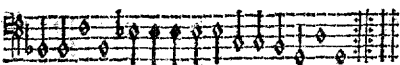
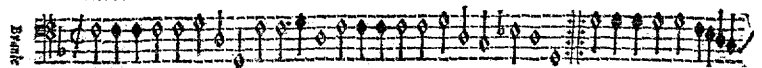
TENOR



CONTRATENOR



BASSVS



SPERIVS

Brille  
Basse  
Ameuse

Brille  
L'esper que iay

TENOR

Brille  
Basse  
Ameuse

Brille

CONTRATENOR

Fo. X III

Brille  
Basse  
Ameuse

Brille

BASSVS

Brille  
Basse  
Ameuse

Brille

SUPERIUS

Bravé

Bravé

*Mari ie songeas laulre iour*

TENOR

Bravé

Bravé

CONTRATENCOR

Fo XIII

Bravé

Bravé

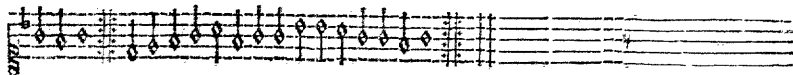
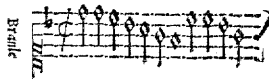
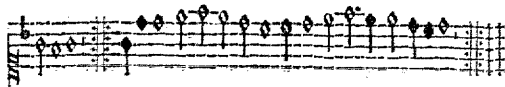
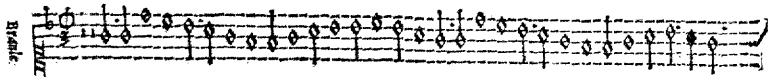
BASSVS

Bravé

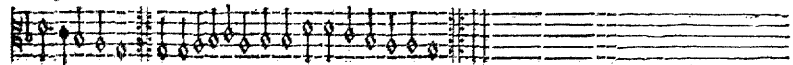
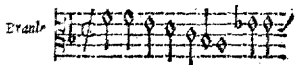
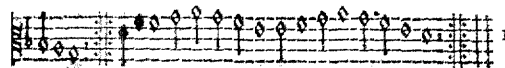
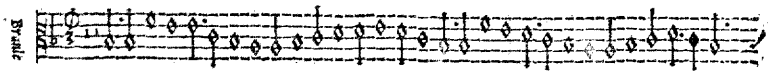
Bravé



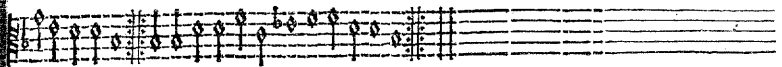
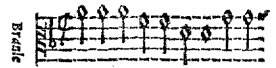
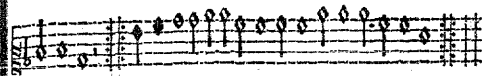
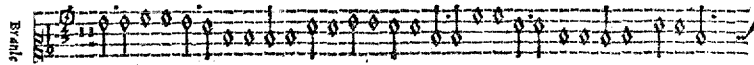
SVPERIVS



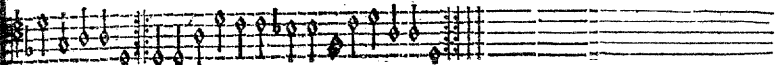
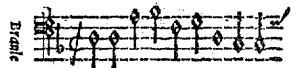
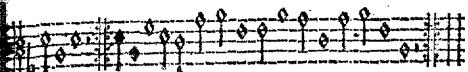
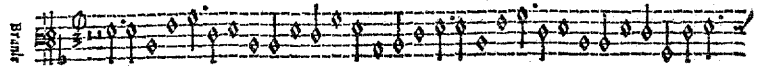
TENOR



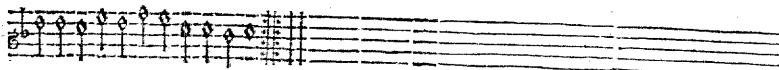
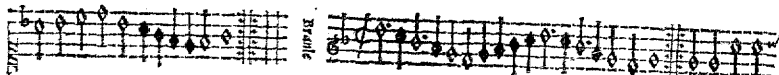
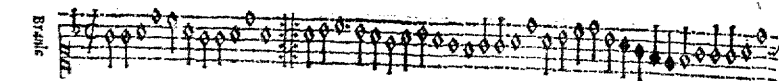
CONTRATENCOR



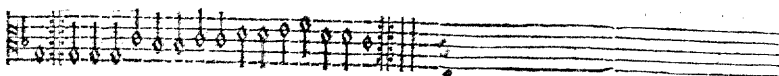
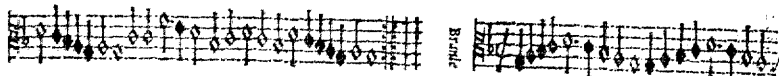
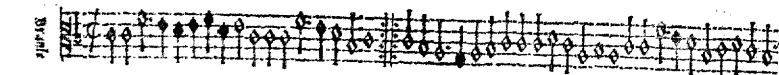
BASSVS.



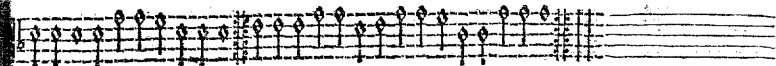
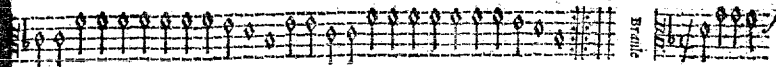
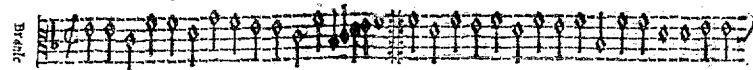
SUPERIUS



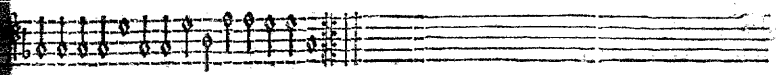
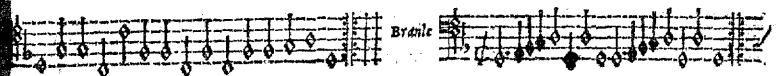
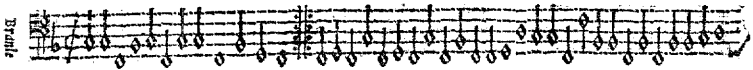
TENOR



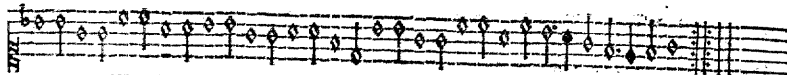
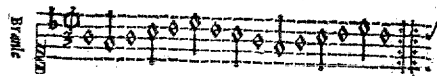
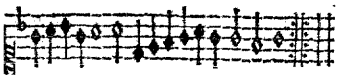
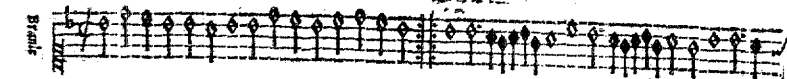
CONTRATENOR



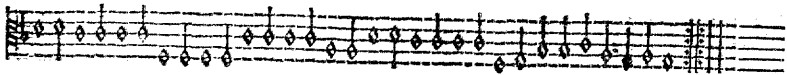
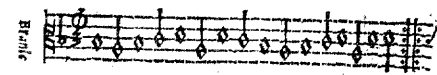
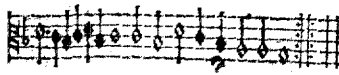
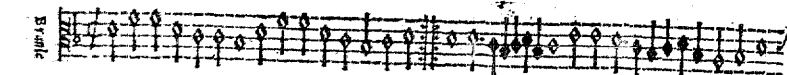
BASSVS



SVPERIVS

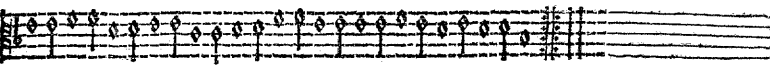
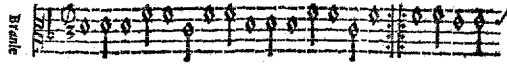
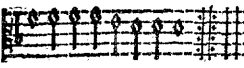
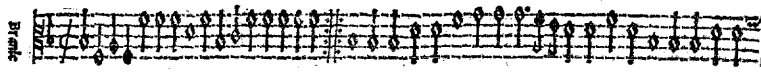


TENOR

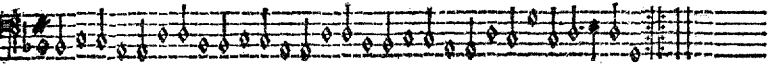
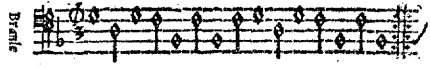
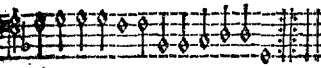
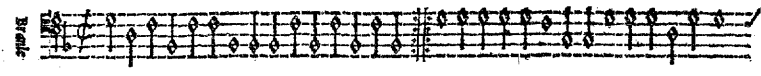


CONTRATENOR

Fo. XVII



BASSVS



SPERIVS

Blaffe  
d'ance

Au pres de nous

TENOR

Blaffe  
d'ance

CONTRATENOR

FO XVIII

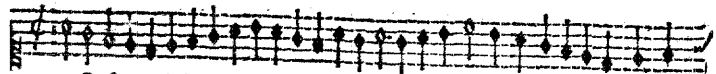
Blaffe  
d'ance

BASSVS

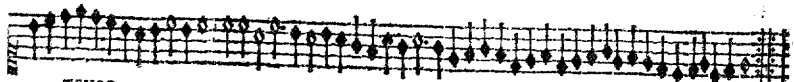
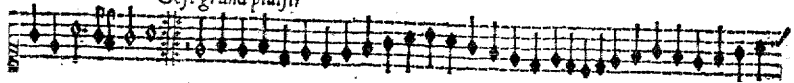
Blaffe  
d'ance

SUPERIUS

TURBIDON

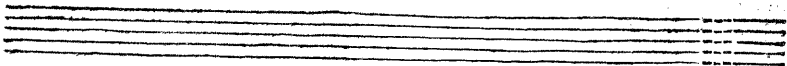
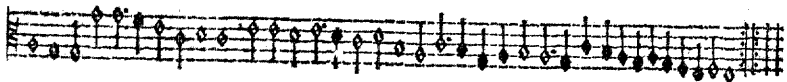


C'est grand plaisir



TENOR

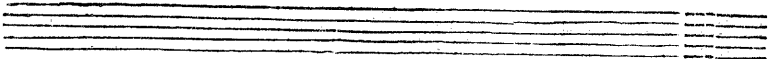
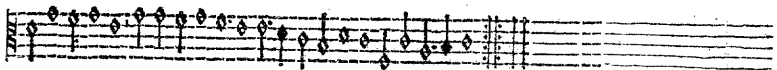
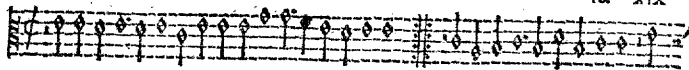
TURBIDON



CONTRATENOR

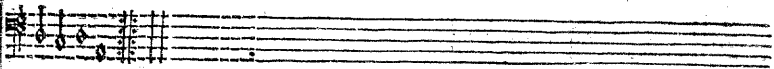
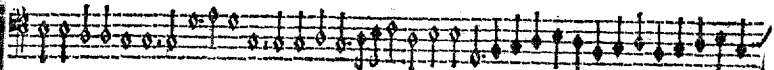
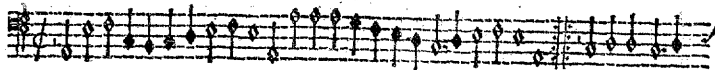
Fa. XIX

TURBIDON



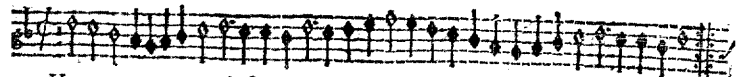
BASSVS.

TURBIDON

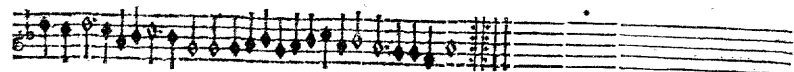


SUPÉRIUS

Tourbillon

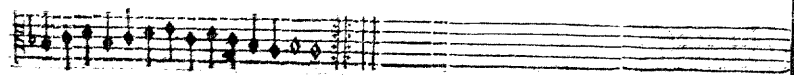
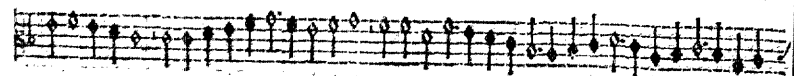
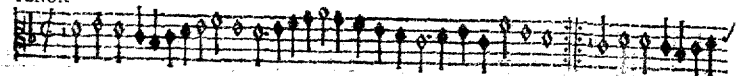


*Vous aurez tout ce qui est myen*



TENOR

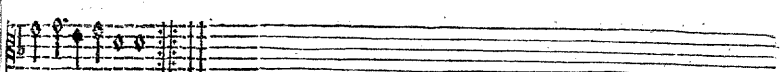
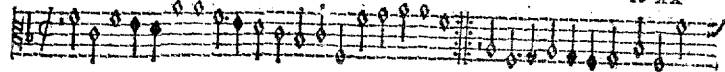
Tourbillon



CONTRATENOR

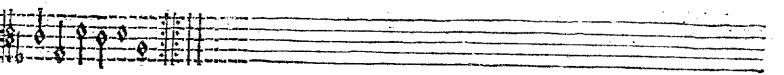
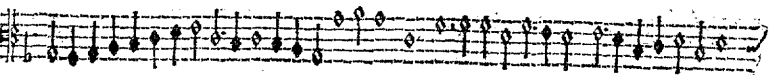
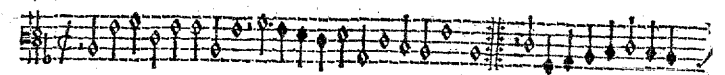
Fo XX

Tourbillon



BASSVS

Tourbillon



SUPERIUS

Basso  
Alto

TENOR

Basso  
Alto

CONTRATENOR

FO. XXI

Basso  
Alto

BASSVS

Basso  
Alto

SPERIVS

Bass  
 Dance

*Content desir.*

TENOR

Bass  
 Dance

CONTRATENOR

Bass  
 Dance

BASSVS

Bass  
 Dance



SUPERIUS

Bass  
 Altus  
 Tenor

*Par* *in despit*

TENOR

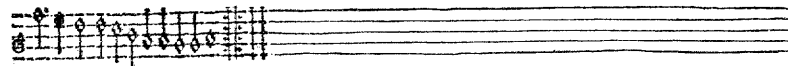
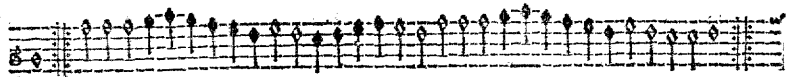
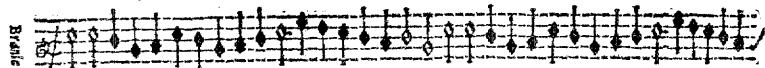
Bass  
 Altus  
 Tenor

CONTRATENOR

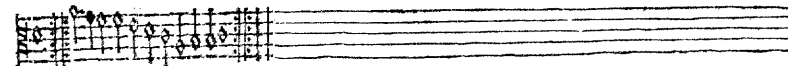
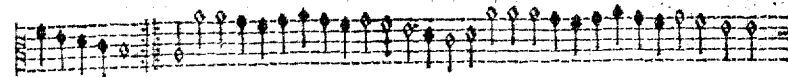
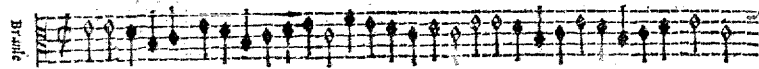
Bass  
 Altus  
 Tenor

Bass  
 Altus  
 Tenor

SUPERIUS

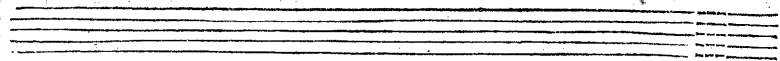
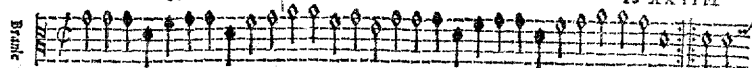


TENOR

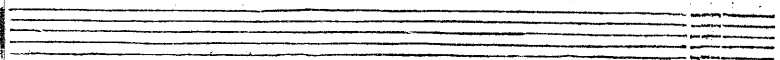
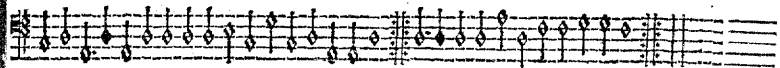
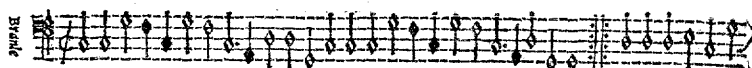


CONTRATENOR

Fo XXIIII



BASSVS



SUPERIUS

Braille  
847

TENOR

Braille  
847

*Que ie chatouille ta fossene*

CONTRATENOR

Fo. XXV

Braille  
847

BASSUS

Braille  
847

SUPERIUS

Braille  
Musical notation for Soprano part, first line.

Braille  
Musical notation for Soprano part, second line.

Braille  
danse

Braille  
Musical notation for Soprano part, third line.

Trop de regretz

Braille  
Musical notation for Soprano part, fourth line.

TENOR

Braille  
Musical notation for Tenor part, first line.

Braille  
Musical notation for Tenor part, second line.

Braille  
Musical notation for Tenor part, third line.

CONTRATENOR

Fo XXVI

Braille  
Musical notation for Contralto part, first line.

Braille  
Musical notation for Contralto part, second line.

Braille  
Musical notation for Contralto part, third line.

BASSVS.

Braille  
Musical notation for Bass part, first line.

Braille  
Musical notation for Bass part, second line.

Braille  
Musical notation for Bass part, third line.

SPERIVS

Touillon

Touillon

Touillon

Touillon

Touillon

TENOR

Touillon

Touillon

Touillon

Touillon

CONTRATENOR

Touillon

Touillon

*Bon touillon sans faire dantes et sans*

Touillon

Touillon

Touillon

Touillon

BASSVS

Touillon

Touillon

Touillon

Touillon

SUPERIUS

Braille

Braille 849

Braille

Braille

TENOR

Braille

Braille 849

Braille

Braille

CONTRATENOR

FO XXVIII

Braille

Braille 849

Braille

Braille

Braille

Braille 849

Braille

BASSVS

Braille

Braille 849

Braille

Braille

SUPERIUS

Braille musical notation for the first line of the Soprano part.

Braille musical notation for the second line of the Soprano part, including a Braille clef change.

Braille musical notation for the third line of the Soprano part.

TENOR

Braille musical notation for the first line of the Tenor part.

Braille musical notation for the second line of the Tenor part, including a Braille clef change.

Braille musical notation for the third line of the Tenor part.

CONTRATENOR

Fo. XXIX

Braille musical notation for the first line of the Contralto part.

Braille musical notation for the second line of the Contralto part, including a Braille clef change.

Braille musical notation for the third line of the Contralto part.

BASSVS

Braille musical notation for the first line of the Bass part.

Braille musical notation for the second line of the Bass part, including a Braille clef change.

Braille musical notation for the third line of the Bass part.

SPERIVS

Musical score for Soprano and Tenor parts. The Soprano part is written on a single staff at the top, and the Tenor part is written on a single staff below it. Both parts are marked 'Piano' and 'Tutti'. The music consists of a series of notes, primarily quarter and eighth notes, with some rests. The Soprano part starts with a treble clef and a key signature of one flat. The Tenor part starts with a bass clef and a key signature of one flat. The score is divided into measures by vertical bar lines.

CONTRATENOR

Musical score for Contratenor and Bass parts. The Contratenor part is written on a single staff at the top, and the Bass part is written on a single staff below it. Both parts are marked 'Piano' and 'Tutti'. The Contratenor part starts with a treble clef and a key signature of one flat. The Bass part starts with a bass clef and a key signature of one flat. The score is divided into measures by vertical bar lines. There are some markings above the Contratenor staff, including 'Fo' and 'XXX'.



SUPERIUS

QUART

TENOR

QUART

CONTRATENOR

QUART

BASSVS

QUART

SUPERIUS

Gaillarde

Gaillarde

TENOR

Gaillarde

Gaillarde

CONTRATENOR

FD XXXII

Gaillarde

Gaillarde

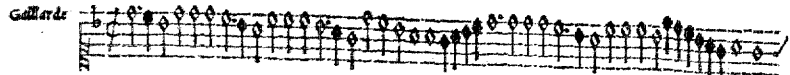
BASSVS

Gaillarde

Gaillarde

SUPERIUS

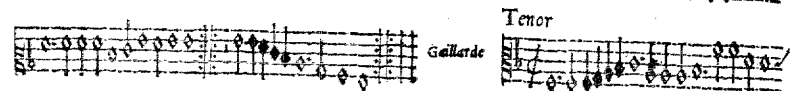
Gaillarde



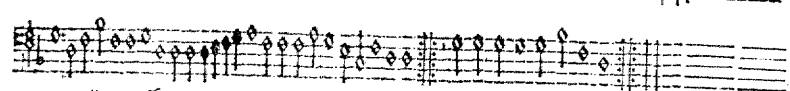
Contratenor



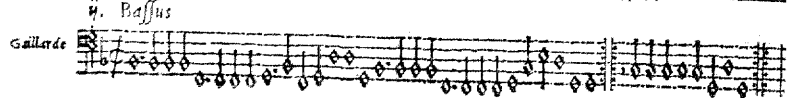
Tenor



i. Bassus



ii. Bassus



Finis.