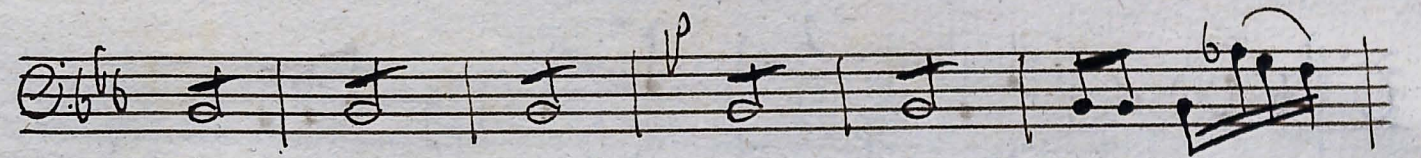
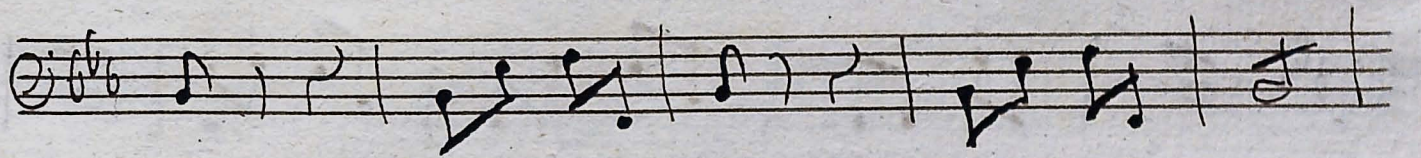


Christe à Dieu ..

Cartinas.

Violoncello. 1



Volte

10/13

1



A handwritten musical score consisting of ten staves. The notation is in a common time signature (C) and a key signature of two flats (B-flat and E-flat). The music is written in a cursive, handwritten style. The first staff begins with a treble clef and a common time signature. The notation includes various note values, rests, and phrasing slurs. The second staff continues the melodic line. The third staff shows a change in the melodic contour. The fourth staff features a half note followed by eighth notes. The fifth staff includes a measure with a fermata and a second ending bracket. The sixth staff continues with eighth notes. The seventh staff shows a change in the melodic line. The eighth staff features a half note followed by eighth notes. The ninth staff continues with eighth notes. The tenth staff concludes the piece with a final melodic phrase.



