

CONCERTI DI CAMERA

A 4.5.6.7.8.9 INSTRUMENTI.

Dedicati

ALLA SER^{ma} ALTEZZA ELETTORALE

DI

GIORGIO LUDOVICO,

DUCA DI BRONSVICH e LVNEBURGO

ELETTORE & ARCITESORIERO

DEL . S . R . I . &c . &c . &c .



DA

Francesco Venturini, Maestro dei Concerti di Camera di S.A.E.

in Hannovera .

Divisi in due Parti .

OPERA PRIMA .

Parte Prima .

a Amsterdam Chez Etienne Roger, Marchand Libraire .

N° 164

SONATA I

OUVERTURE a 8 Instruments 2 Violons 2 Hautbois
1 Haute Contre 1 Taille 1 Basson & Basse Continue. Grave e Staccato

Violino Secondo

ALLEMANDA
a 8 Instruments

ARIA
a 8 Instruments
Andante

GAVOTTA
a 8 Instruments
Alternativement avec le Trio suivant

16 *Da Capo del Gavotta.*
Fine Trio Tacet

MENUET
a 8 Instruments
Alternativement avec le Menuet suivant

CANON
à 8 Instruments

Andante

PASSEPIED
à 8 Instruments

Alternativement avec le trio suivant

Piano

Forte 24

Da Capo del Passepied

Fine Trio Tacet

SONATA III

OUVERTURE à 8 Instruments 2 Violons 2 Hautbois
1 Haute Contre 1 Taille 1 Basson & Basse Continue.

Allegro e Staccato

ALLEMANDA
a 8 Instruments
Pas trop vite

ARIA
a 8 Instruments.
Andante & Alternativement avec le Trio suivant.

BOURÉE
a 8 Instruments

Allegro

PASSEPIED
a 8 Instruments

Allegro assai & Alternativement avec le Trio suivant

SONATA IV

*CONCERTO a 8 Instruments 2 Violons 2 Hautbois
1 Haute Contre 1 Taille 1 Basson & Basse Continue.*

Allegro assai. Alternativement avec la Sarabande

Violino Secondo

The musical score for Violino Secondo consists of 14 staves of music. The first staff begins with a treble clef, a key signature of one sharp (F#), and a common time signature (C). The music is written in a single melodic line. Dynamic markings include *Forte* (written as *F*) and *Piano* (written as *p*). There are also first and second endings marked with '1' and '2'. The piece concludes with a section titled *Sarabanda*, indicated by a 3/2 time signature and a *Fine* marking. The final staff includes the instruction *Da Capo del Concerto*, which is repeated at the end of the line.

Violino Secondo

GIGA
à 8 Instruments

Allegro

Piano

Forte

Piano

Forte

Piano

Forte

Piano

Forte

Piano

Forte

GAVOTTA
à 8 Instruments.

Alternativement avec le Trio suivant.

16

Fine Trio Tacet.

Da Capo del Gavotta

MENUET
à 8 Instruments

Alternativement avec le Menuet suivant.

Fine

Da Capo del Primo Menuet.

SONATA V

OUVERTURE a 8 Instruments Violens & Hautbois
1 Haute Contre 1 Taille 1 Basson & Basse Continuo.

Grave

Allegro

14

10

1

Grave

Violino Secondo

ALLEMANDA
a 8 Instruments.

Musical score for the Allemanda section, Violino Secondo part. It consists of eight staves of music in common time (C). The notation includes various rhythmic values such as eighth and sixteenth notes, often beamed together. There are several trills marked with 'x' and some notes marked with '+' signs. The piece concludes with a double bar line and repeat signs.

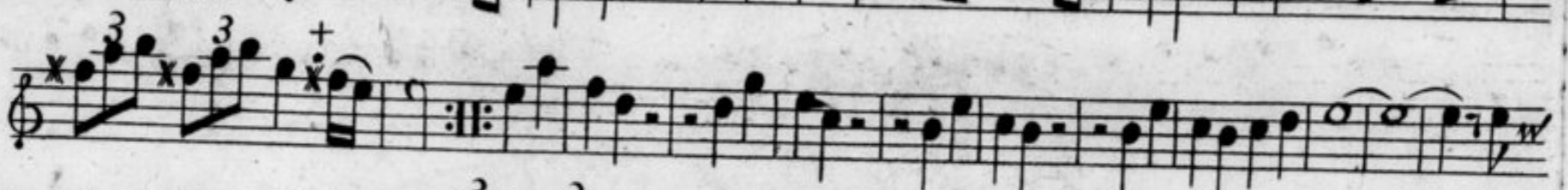
ARIA

a 9 Instruments 2 Violons 2
Hautbois 1 Haute Contre 1 Taille
2 Bassons & Basse Continue.

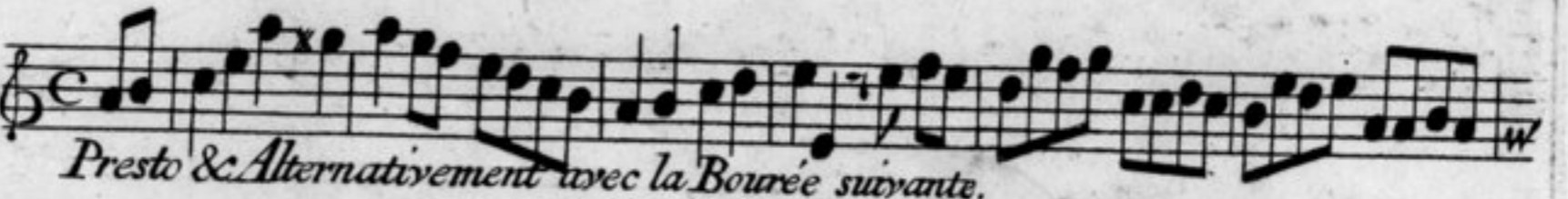
Musical score for the Aria section, Violino Secondo part. It consists of eight staves of music in 3/4 time. The piece begins with a *Piano* dynamic and includes a *Forte* dynamic marking. The notation features a mix of eighth and sixteenth notes, with some trills marked with 'x'. There are also markings for *Pianissimo* and *Pianis.* The score ends with a first ending bracket labeled '1' and a final note.



GAVOTTA
a 8 Instruments



BOURÉE
a 8 Instruments



MENUET
a 8 Instruments



Violino Secondo

SONATA VI

CONCERTO a 9 Instruments 2 Violons, Violons Ripinés
2 Hautbois 1 Haute Contre 1 Taille 1 Basson & Basse Continue.

Allegro

Piano

Forte

Piano Forte Piano

Forte Piano Forte Piano

Forte

Piano

Forte Pianissimo Piano

Forte Adagio e Piano Pianissimo

Forte Da Capo del Concerto.

PASSEPIED

a 8 Instruments

Presto & Alternativement avec le Passepiéd suivant.

Fine

Da Capo del Primo Passepiéd

2 Passepiéd