

XI.

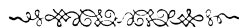
MISSA PRO DEFUNCTIS

Quatuor

Vocibus paribus concinenda

AUCTORE

MATHEO ASOBA.



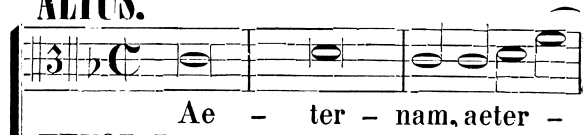
XI. Missa pro Defunctis.

M. Azula.



ALTUS.

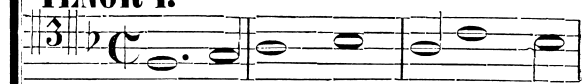
- Equiem.



Ae - ter - nam, aeter -

TENOR I.

- Equiem.



Ae - ter - - - -

TENOR II.



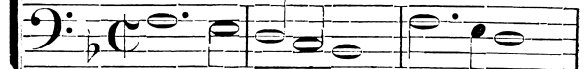
Requiem



Ae - - ter - -

BASSUS.

Requiem.



Ae - ter - - - -



- - - - - nam do - na e -



- nam do - na e - - - is Do - - - mi - ne, Do - -



- - - nam do - - - -



- nam do - - - - na e - is Do -



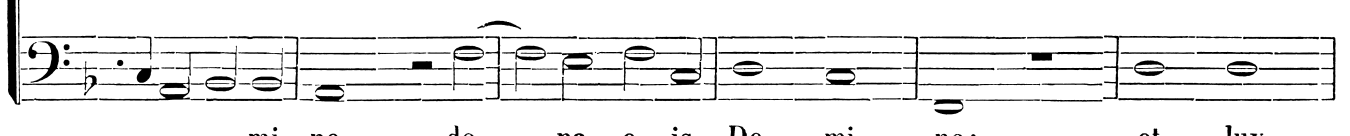
- - is Do - mi - ne, do - na e - is Do - mi - ne:



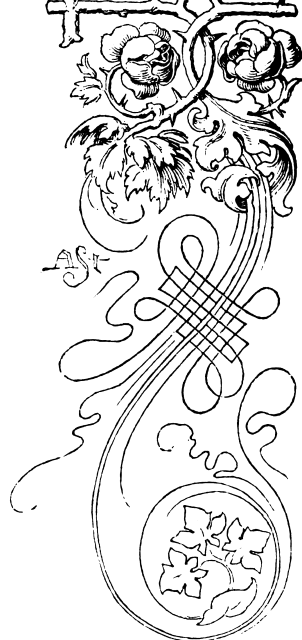
- - - mi - ne, do - - na e - is Do - mi - ne: et lux per-

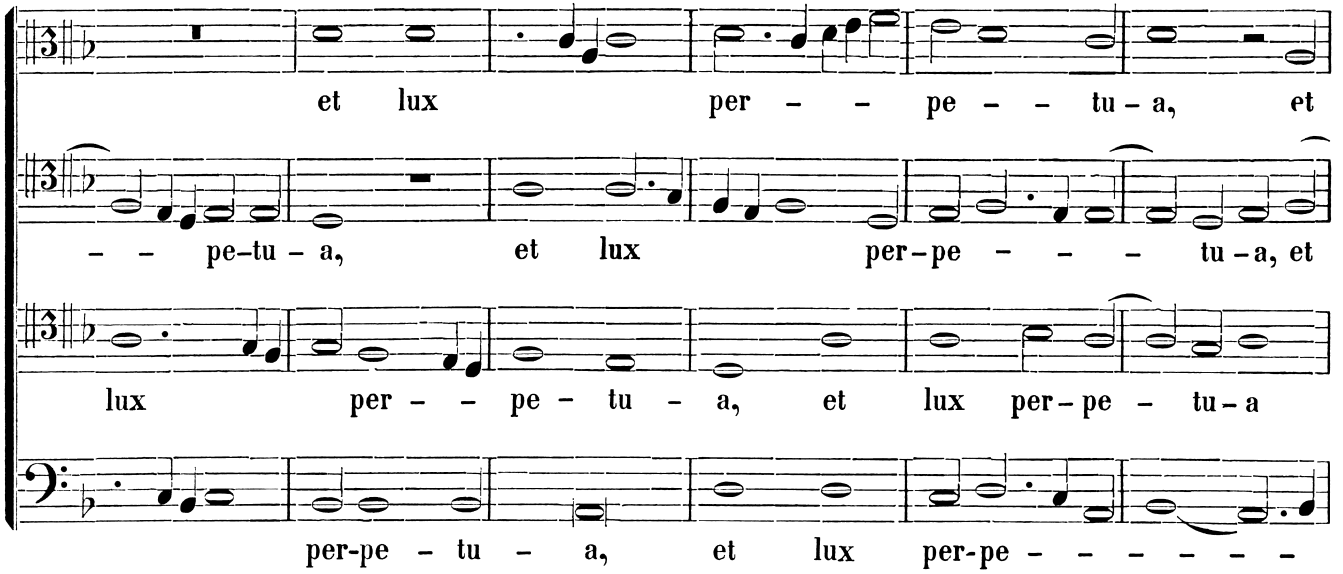


- na e - - - - is Do - mi - - ne: et

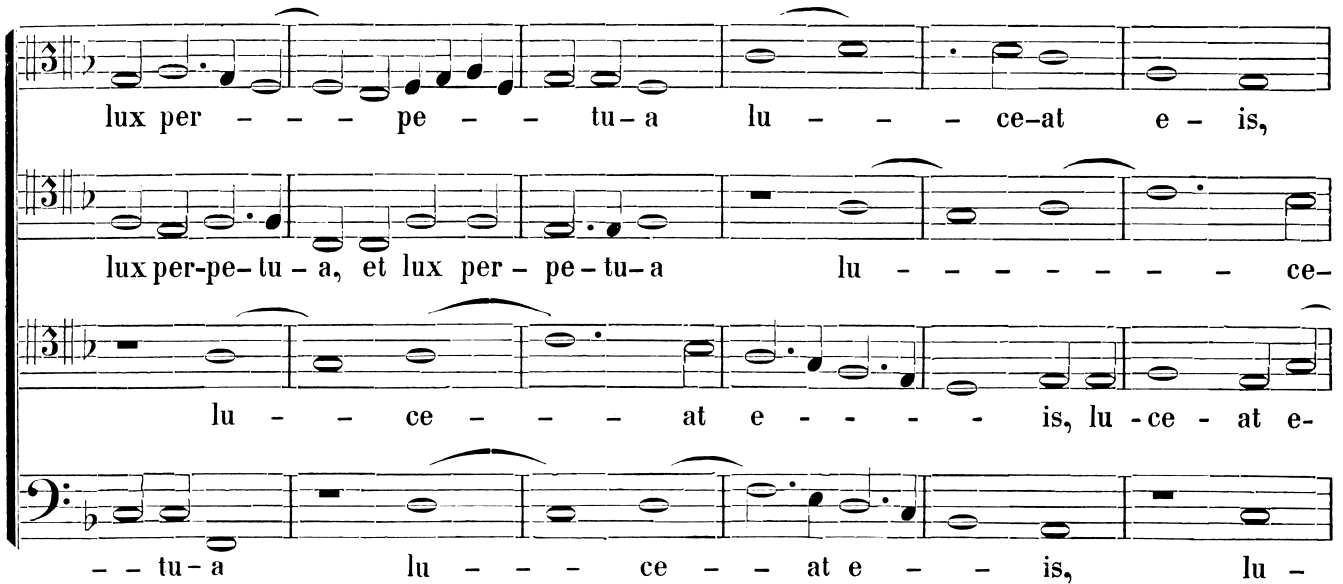


- - mi - ne, do - na e - is Do - mi - ne: et lux

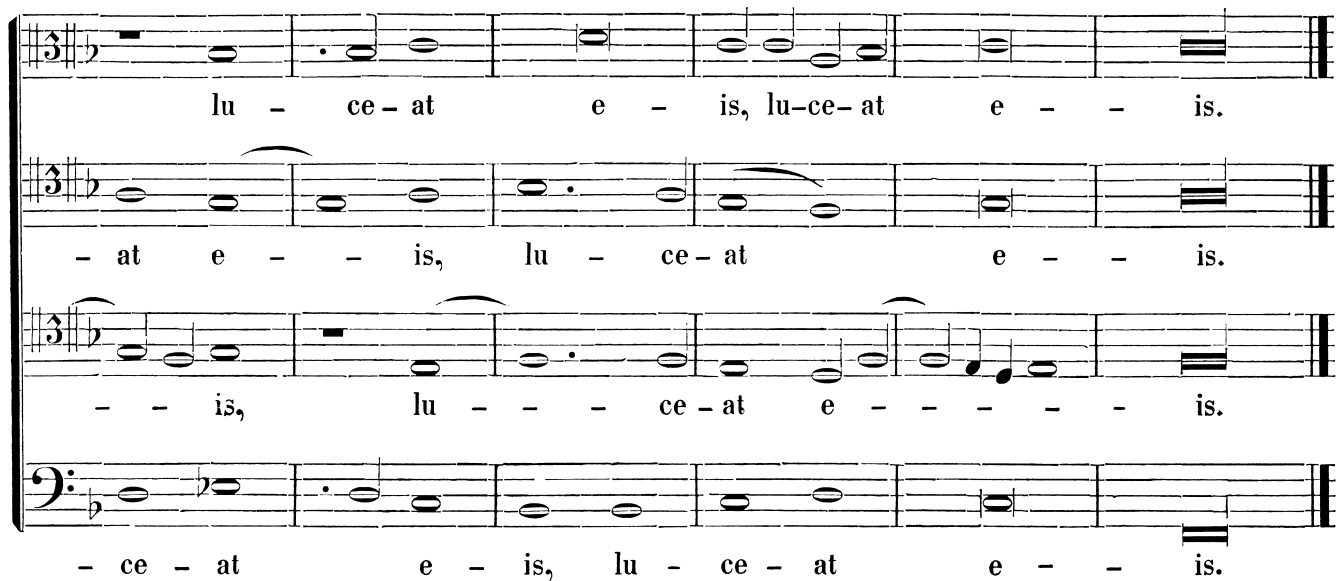




et lux per - - pe - - tu - a, et
 - - pe-tu - a, et lux per-pe - - - tu - a, et
 lux per - - pe - tu - a, et lux per-pe - tu - a
 per-pe - tu - a, et lux per-pe - - - - -



lux per - - - pe - - tu - a lu - - - ce-at e - is,
 lux per-pe-tu - a, et lux per - pe - tu - a lu - - - - - ce-
 lu - - ce - - - at e - - - is, lu - ce - at e -
 - - tu - a lu - - - ce - - at e - - is, lu -



lu - ce - at e - is, lu-ce-at e - - is.
 - at e - - is, lu - ce - at e - - is.
 - - is, lu - - - ce - at e - - - - is.
 - ce - at e - is, lu - ce - at e - - is.



Te decet hymnus Deus in Sion:

- T ti - bi red-de - tur vo - tum in Je-

Et ti - bi red - de - tur vo - tum in

Et ti - bi red-de-tur vo - tum in Je-

Et ti - bi red - de - tur vo - tum in Je-

- ru - sa - lem: Ex - - au - di o - ra - ti - o -

Je - ru - sa - lem: Ex - au - di o - ra - ti - o -

- ru - sa - lem: Ex - au - di o - ra - ti - o -

- ru - sa - lem: Ex - au - di o - ra - ti - o -

- nem me - am, ad te o - mnis ca - ro ve - - ni - et.

- nem me - am, ad te o - mnis ca - ro ve - - - ni - et.

- nem me - am, ad te o - mnis ca - ro ve - ni - et.

- nem me - am, ad te o - mnis ca - ro ve - ni - et.