

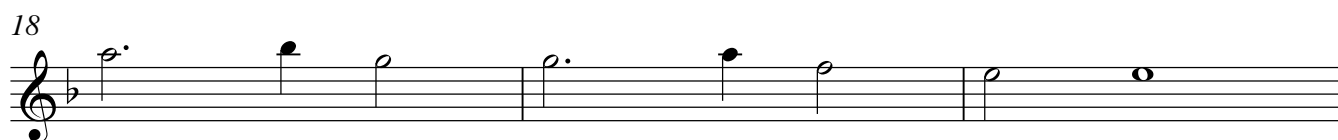
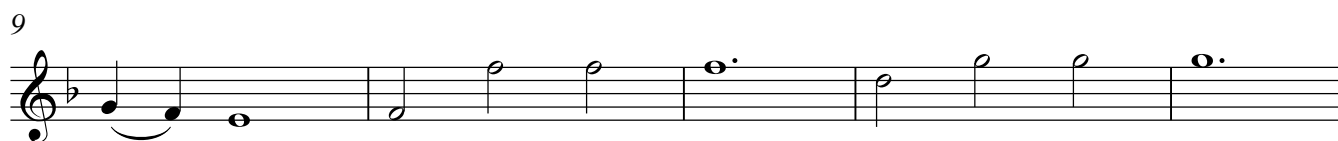
Violine 1

Sonate in F-Dur
für 2 Violinen und Basso continuo

op.5 Nr.3

Gottfried Finger

Adagio



Allegro

5

8

11

14

17

20

22

25

28

30

Largo

First musical staff, measures 1-4. Treble clef, key signature of one flat (B-flat), 3/2 time signature. The melody begins with a dotted half note on G4, followed by quarter notes on A4, B-flat4, and C5. The second measure contains a dotted half note on C5, and the third and fourth measures continue with quarter notes on B-flat4, A4, and G4.

5

Second musical staff, measures 5-8. The melody continues with quarter notes on F4, E4, and D4. The eighth measure features a dotted half note on D4.

9

Third musical staff, measures 9-13. The melody starts with a dotted half note on C4, followed by quarter notes on D4, E4, and F4. There is a whole rest in the second measure. The melody concludes with quarter notes on G4, A4, and B-flat4.

14

Fourth musical staff, measures 14-16. The melody consists of quarter notes on G4, A4, and B-flat4, each with a slur over it.

17

Fifth musical staff, measures 17-20. The melody consists of quarter notes on C5, B-flat4, A4, and G4, each with a slur over it.

20

Sixth musical staff, measures 21-23. The melody consists of quarter notes on F4, E4, and D4, each with a slur over it.

24

Seventh musical staff, measures 24-27. The melody starts with a dotted half note on C4, followed by quarter notes on D4, E4, and F4. There is a whole rest in the second measure. The melody concludes with quarter notes on G4, A4, and B-flat4.

28

Eighth musical staff, measures 28-31. The melody consists of quarter notes on G4, A4, and B-flat4, each with a slur over it.

32

Ninth musical staff, measures 32-34. The melody consists of quarter notes on C5, B-flat4, A4, and G4, each with a slur over it.

35

Tenth musical staff, measures 35-37. The melody starts with a dotted half note on C4, followed by quarter notes on D4, E4, and F4. There is a whole rest in the second measure. The melody concludes with quarter notes on G4, A4, and B-flat4.

38

Eleventh musical staff, measures 38-40. The melody consists of quarter notes on G4, A4, and B-flat4, each with a slur over it.

