

# PAMM 16

## Flauta I

Edição: Lúcius Mota

Fonte: AFV

# Telêmaco

*Cenas Sinfônicas*

A Eugênio Fontainha

1891

Francisco Valle  
(1869-1906)

### PRIMEIRA PARTE

*Allegro agitato*

Musical notation for the first system of the flute part, measures 1-3. The key signature is three sharps (F#, C#, G#) and the time signature is 3/4. Measure 1 contains a whole rest. Measure 2 contains an eighth-note scale starting on G4, marked with a piano (*p*) dynamic. Measure 3 contains a quarter rest, marked with a forte (*f*) dynamic. A slur covers measures 2 and 3. The number '8' is written above measure 1, and the number '3' is written above measure 3.

Musical notation for the second system of the flute part, measures 14-15. The key signature is three sharps and the time signature is 3/4. Both measures contain eighth-note scales starting on G4, marked with a fortissimo (*ff*) dynamic. Slurs are placed over each measure. Measure 14 has a small 'x' above the first note. Measure 15 has a small 'x' above the first note. A double-headed arrow is placed below each measure.

Musical notation for the third system of the flute part, measure 16. The key signature is three sharps and the time signature is 3/4. The measure contains a continuous eighth-note scale starting on G4, marked with a fortissimo (*ff*) dynamic. A slur covers the entire measure. The number '5' is written below the measure.

Musical notation for the fourth system of the flute part, measure 17. The key signature is three sharps and the time signature is 3/4. The measure contains a continuous eighth-note scale starting on G4, marked with a fortissimo (*ff*) dynamic. A slur covers the entire measure. The number '5' is written below the measure.

Musical notation for the fifth system of the flute part, measure 18. The key signature is three sharps and the time signature is 3/4. The measure contains a continuous eighth-note scale starting on G4, marked with a fortissimo (*ff*) dynamic. A slur covers the entire measure. The number '5' is written below the measure.

Musical notation for the sixth system of the flute part, measure 20. The key signature is three sharps and the time signature is 3/4. The measure contains a whole rest. The number '7' is written above the measure.

27 **A**

*ff*

29

*p*

32

*ff*

34

*ff*

40

*ff* *fff*

44

*ff* *dim.* *p* *sf*

49

*sf* *sf* *sf*

52 **B** Poco più mosso

*legato* **12**

68 *smorzando* **Poco più lento**

*p* *pp*

75 *leggiero*

*p* *sf*

81 **C**

*sf*

90

*a 2* *cresc.* *f*

97 *tr*

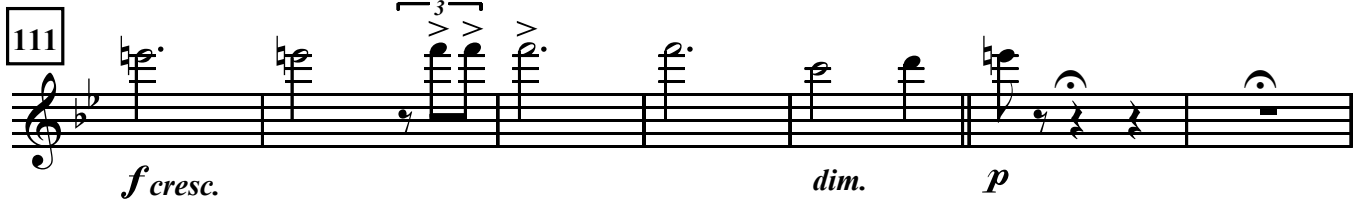
*pp* *cresc.*

103

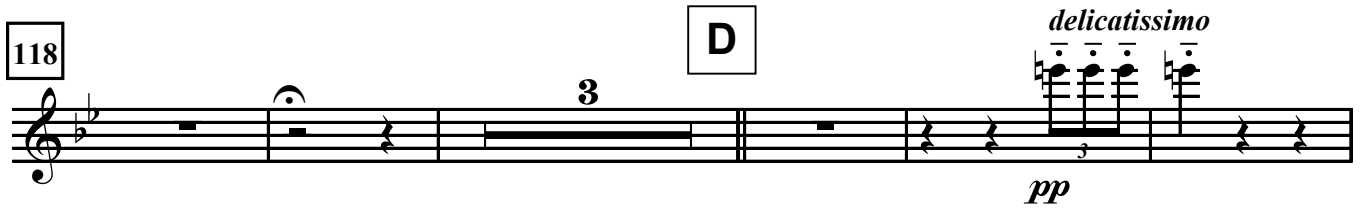
*pp*

106 **Più mosso**

*3*

111 

*f cresc.* *dim.* *p*

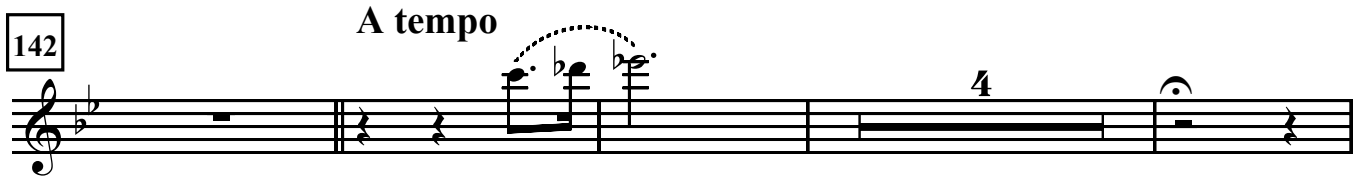
118 

*pp* *delicatissimo*

126 

**Allegro agitato**

*sf*

142 

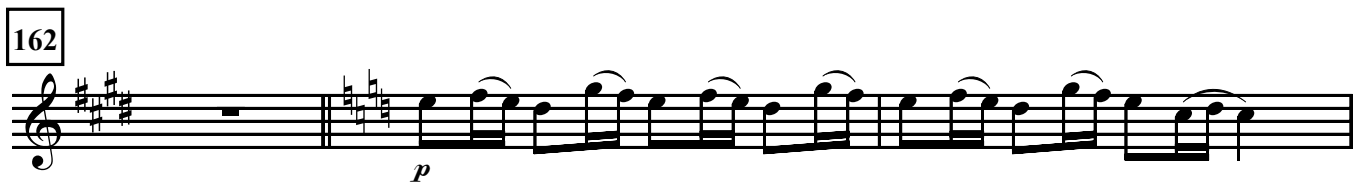
**A tempo**

150 

**SEGUNDA PARTE**

**Allegretto scherzando**

*f*

162 

*p*

165 

169

*mp* *f*

172

Andante sostenuto  
*legato*

*p*

174

*legato*

**F**

184

*f*

186

*p*

190

A tempo

*f*

194

*f*

199

*pp*

207

1.  
*pp* *p*

211

**G**  
*p* **Più lento**

218

*p* *p*

222

*mf* *f* **Poco meno**  
2

226

1.  
*ppp*

228

*f* *p*

233

*pp* *dolce*

235

*p* *p*

Largo un poco ad libitum

240

*p*

Allegro ma non troppo

247

**H**

271

*f*

274

**I**

*fff* *sf*

279

*sf*

284

*p* *pp*

289

*ppp* *legato* **J**

306 *p* *f* *f* *scherzando*

311 *f*

315 *f*

319 *ff* **K**

326

328

331 *Meno* *mp*

335 *p*



339 **A tempo**  
*con fuoco*

*f cresc.* *ff sf*

342

*ff sf f*

358

*ff*

365

*sf f sf*

371

*f*

375 **Meno** *1. dolce*

*p pp sf*

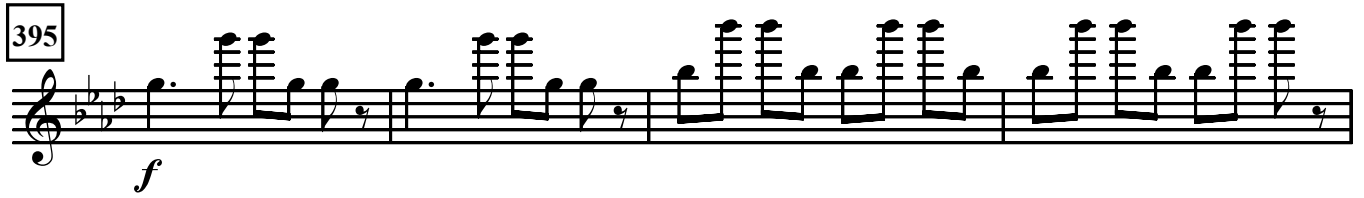
378

*diminuendo poco a poco sf pp*

381

*pp* **M** **Meno**

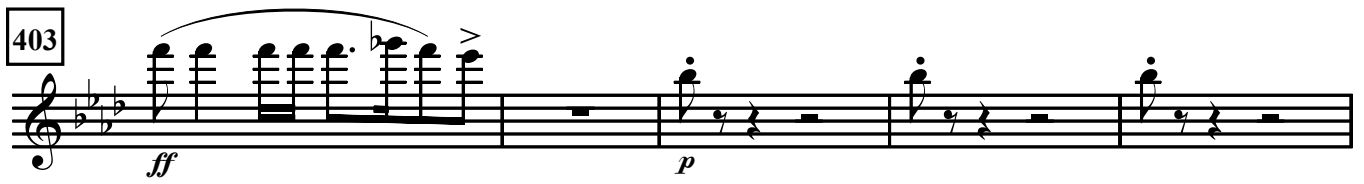
395 *f*



399 *fff* **A tempo**



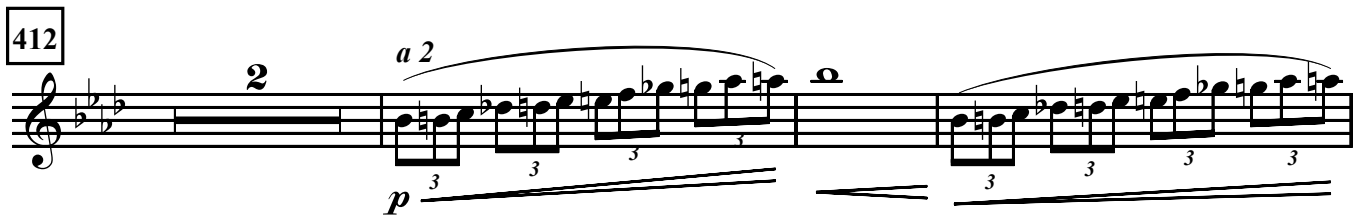
403 *ff* *p*



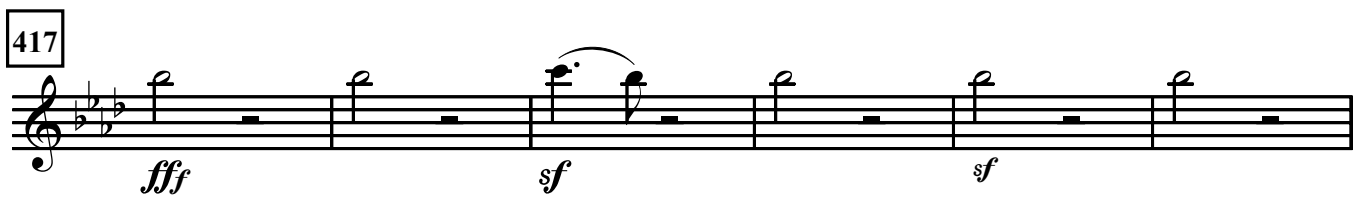
408 **N** *fff*



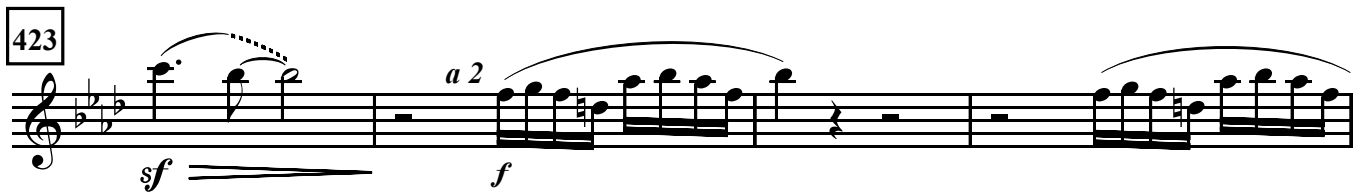
412 *p* *a 2*



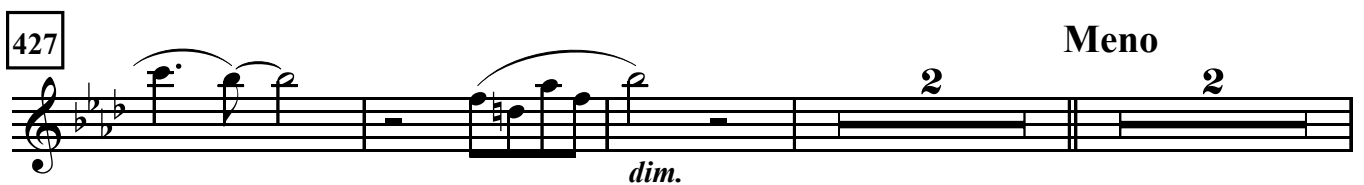
417 *fff* *sf* *sf*



423 *sf* *f* *a 2*



427 *dim.* **Meno**



434 *1. dolce*

438

441 **O** *A tempo*

451

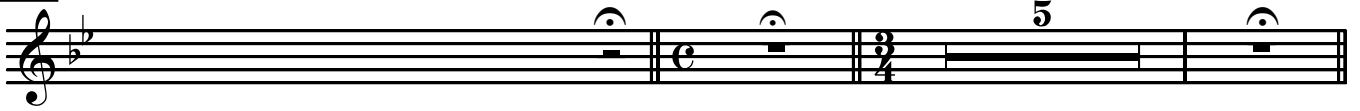
474 **P**

482 *Largo* *A tempo*

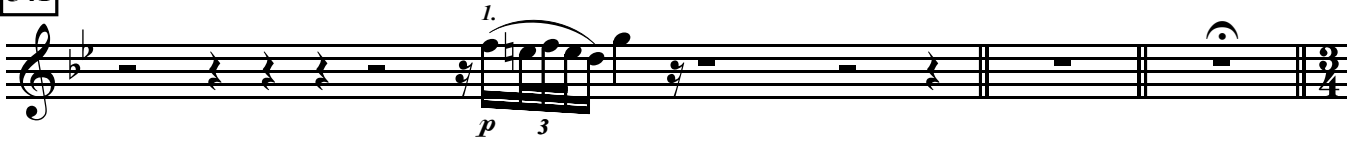
499 **Q**

512 **R**

533

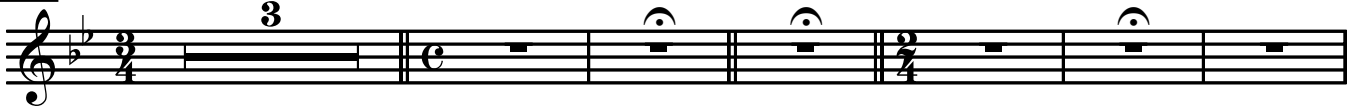


541



544

Sostenuto



553

S

Moderato sostenuto maestoso



578

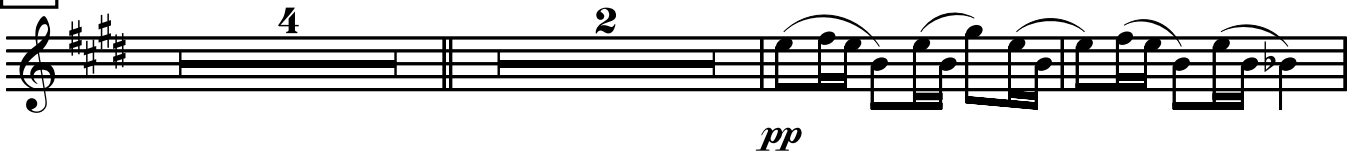


582

T



586



594



**Allegro agitato**

606 **U**

*p*

621

*p* ————— *f*

629 **V**

*ff*

631

*f* 5

**TERCEIRA PARTE**

632

5

633

5

635

7

642

645

*a 2*

*sf* *f*

646

*sf* *ff*

W

649

*con forza*

*con forza*

3

656

*sf*

*con fuoco,*  
*accelerando sempre*

658

*p*

664

X

*accel.*

*sf* *sf*

667

4

673

*p*

676

*perdendo-se*  
*pp*

681

**Y** **Meno**

*p*

690

*p*

*sotto voce*

695

**Z**

*p*

709