

The image shows a handwritten musical score for a cello, consisting of ten staves. The notation is in a single system with a key signature of two flats (B-flat and E-flat) and a common time signature (C). The music is written in a style characteristic of 18th or 19th-century manuscripts. The first staff begins with the tempo marking 'And. soffem.' and a dynamic marking 'p'. The second staff has a 'solo' marking above it. The third staff has an 'A' marking above it. The fourth staff has a 'solo' marking above it. The fifth staff has an 'A' marking above it. The sixth staff has an 'A' marking above it. The seventh staff has an 'A' marking above it. The eighth staff has a 'solo' marking above it. The ninth staff has an 'A' marking above it. The tenth staff has an 'A' marking above it. The music features a variety of rhythmic values, including eighth, sixteenth, and thirty-second notes, as well as rests and accidentals. The notation is clear and legible, with some ink bleed-through from the reverse side of the page.

Handwritten musical score consisting of ten staves of music. The key signature is one sharp (F#), and the time signature is 9/8. The notation includes various rhythmic values, slurs, and dynamic markings such as *Solo* and *A*. The music is written in a cursive, handwritten style on aged paper.

Qui annunciat

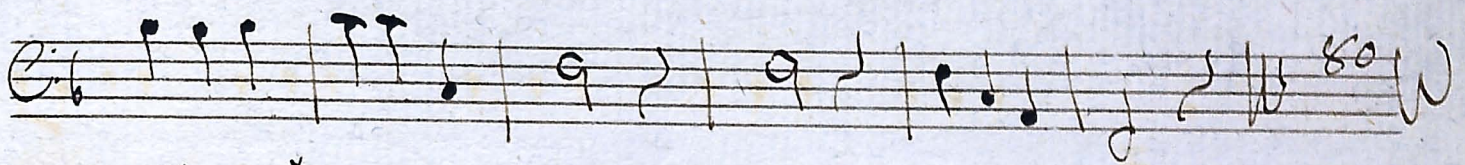
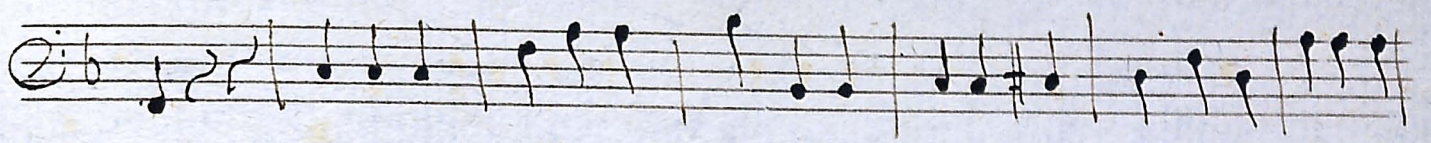
Andante

46.

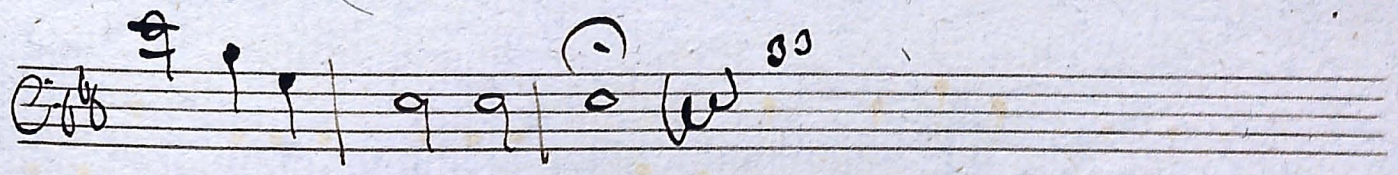
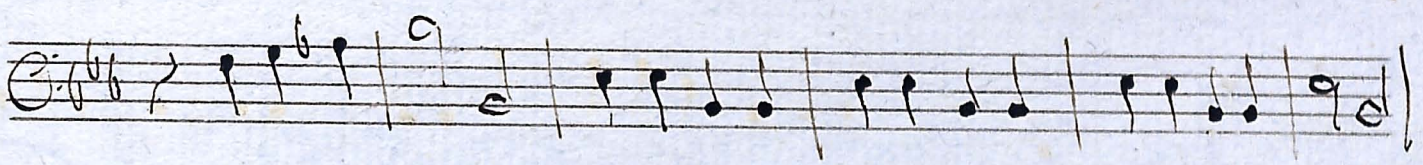
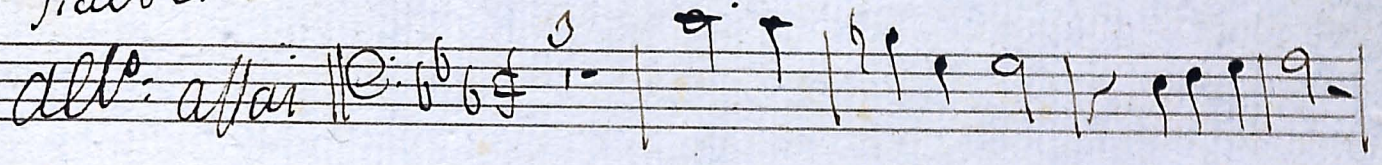
Volto

# Gloria

*Cantabile* | 6/4



*sicut erat*



*// Laud Deo //*