

Les Bayarda

Galle
= et C. Masse

A. 25

Partition with Factors



LES BAVARDS

Opéra Bouffe en 2 Actes

J. OFFENBACH.

All^o maestoso.

V^{lle} et C. BASSE.

Unis.

OUVERTURE.

BRANDUS et DUFOUR, Editeurs, rue Richelieu 405.

B. et. D. 10,664.

All^{to} quasi And^{no}

p Unis. 8 2 pizz.

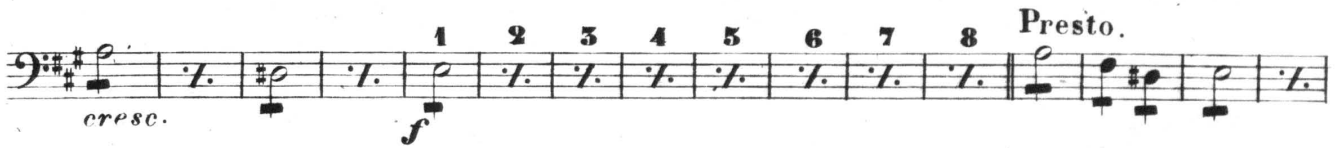
Unis. a tempo. rit. arco.

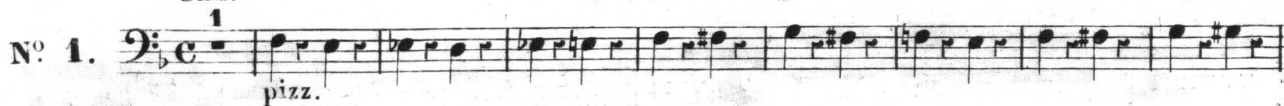
Divisi. f

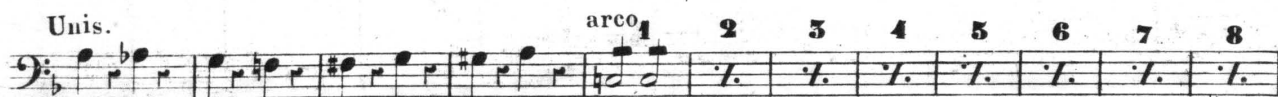
Unis. 2 pizz. arco. rit.

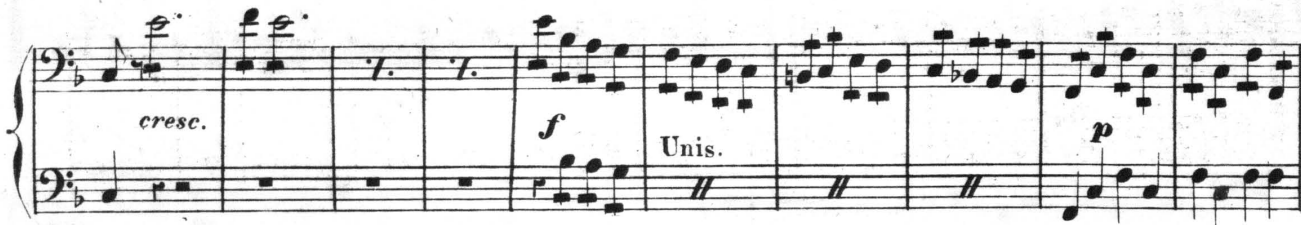
Allegro. f


1^o tempo. 1 f Unis.



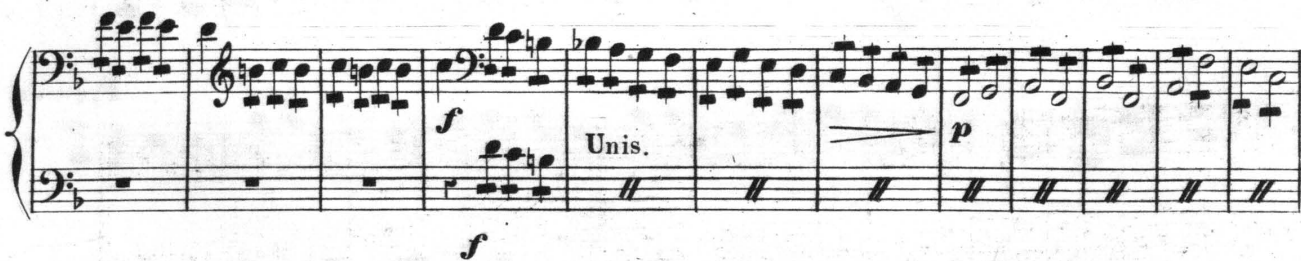
N^o 1. 

Unis. 











fp
arco
f *fp*
f p *f p*

Divisi.
Unis.
15 pizz.
p arco.

arco. *f*
f

Unis.
f *p*

Unis.
pizz.
pizz.

arco. *fp*
fp Divisi.

Unis.

V^l et C. BASSE.

All^{to}

N^o 2.

pizz. arco

Unis.

pizz. arco.

pizz. arco. pizz.

Unis.

pizz.

arco. cresc e animato. rit.

Unis.

pizz.

1^o fois. 2^o fois.

p rit. pizz. arco. f p f

Unis. pizz. arco. f Unis.

All^o

N^o 3.

Unis.

f

1 Mod^{to}

pizz. arco. All^{to}

6 mf> pizz.

pizz. arco. pizz. arco.

rit.

piu rit.

Même mouvt

pizz.
pizz.
arco.
riten.
cresc.

All^{to}

pizz.

Presto.

Unis. 2 3 4 5 6 7

arco.

f p
f
f p
Unis.

f
animé.
Unis.

Très vite.

V^{lle} et C. BASSE.

N^o 4

Unis.

1^{re} fois. 2^e fois. 7

Unis.

And^{te}

V^{lle} et C. BASSE.

Unis.

First musical staff, bass clef, key signature of two flats, 4/4 time. It begins with a forte (*f*) dynamic and a first ending bracket labeled '1'. The staff concludes with a piano (*p*) dynamic.

Second musical staff, bass clef, key signature of two flats, 4/4 time. It continues the melodic line from the first staff.

7

Third musical staff, bass clef, key signature of two flats, 4/4 time. It features a series of eighth-note patterns.

Fourth musical staff, bass clef, key signature of two flats, 4/4 time. It begins with a piano (*p*) dynamic and features a series of eighth-note patterns.

Fifth musical staff, bass clef, key signature of two flats, 4/4 time. It continues the melodic line with various rhythmic values.

All^o mod^{to}

§

N^o 5

Sixth musical staff, bass clef, key signature of two flats, 4/4 time. It is marked 'Unis.' and 'p'. The staff contains a series of eighth-note patterns.

Seventh musical staff, bass clef, key signature of two flats, 4/4 time. It features a series of eighth-note patterns. The number '2' is written in the first measure, and '6' is written in the sixth measure.

Eighth musical staff, bass clef, key signature of two flats, 4/4 time. It features a series of eighth-note patterns. The word 'arco.' is written above the staff, and 'Unis.' is written below it. The dynamic 'mf' is written at the end of the staff.

Ninth musical staff, bass clef, key signature of two flats, 4/4 time. It features a series of eighth-note patterns. The word 'Divisi.' is written above the staff, and 'Unis.' is written below it. The dynamic 'f' is written at the end of the staff.

No 5 bis

f p *f f f* *pizz.*

No 6.

f 4 1 Unis.

Divisi.

pizz. *cresc.* *cresc.*

tr Unis. *pizz.* 1 2 *pizz.*

Solo. 2 2 1

Divisi. 1e fois. 2e fois.

Unis. 1 2 3 4 5 6

Unis. Un peu moins vite. 1 arco. pizz.

1 And^{no}

1 1^{re} fois.

2^e fois. All^o f arco.

pizz. f Unis. All^to f p 1 p

Unis.

pizz. arco. Unis.

1 f f

suivez. f

f

Vll^o et C. BASSE.

All^o
 N^o 7. *p* 1 2 3 4 5 6 7 8 9 10 11 12 13 14
cresc.

1 2 3 4 5 6 7 8

Unis. *f*

Unis. *p* *f* Unis. *p*

Mod^{to}
riten. pizz.

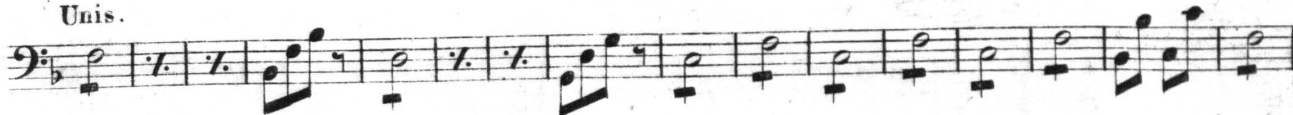
All^o vivo.
 arco.

Unis. *f*

1 2 3 4 5 6 7 8 9 10 11 12 13 14 15

All^o vivo.
 & *p*

Unis.



4 Couplets



All^o mod^{to}



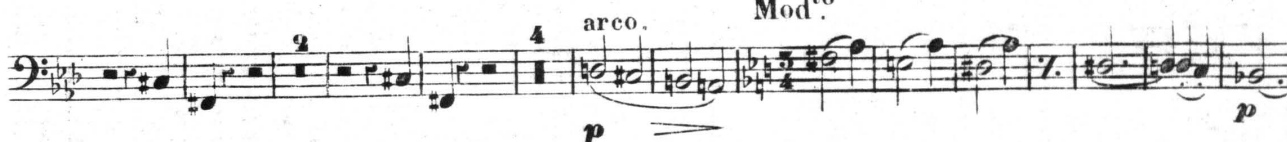
1^o tempo.



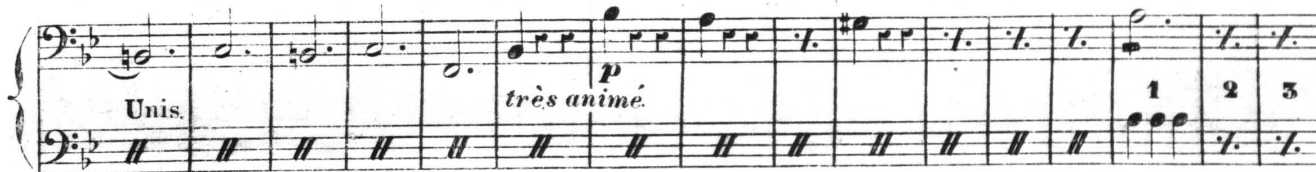
Unis.



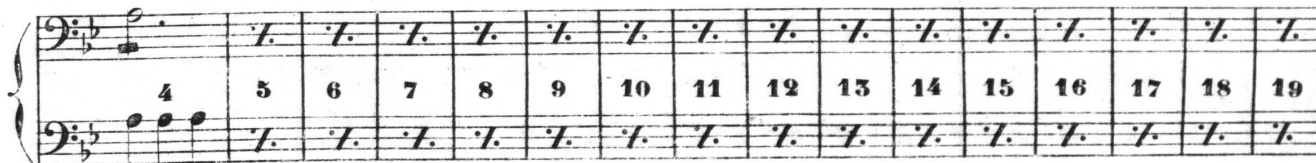
Mod^{to}



Unis.

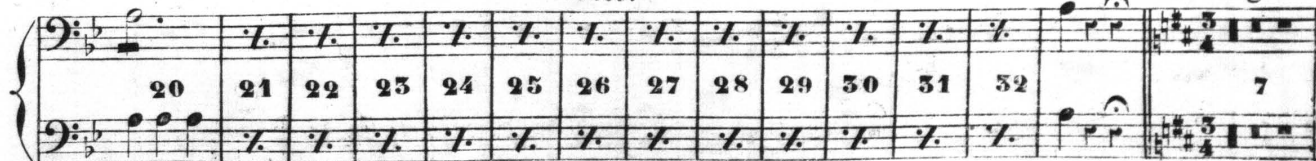


cresc.



cresc.

Allegro.



All^o mod^{to}

Unis. pizz. arco. pizz.

pp Unis. arco.

mf 1 2 3 4 5 6 7 8 mf rit.

p pizz. arco. Unis.

Unis. 1

Unis. Mod^{to} 2 3 4 5 6 7 8 9 7 3 3 3

p Unis. pizz. 3 15 1 1

arco. *cresc.* **All^o**

ff

Très vite.

Modérato. **ENTR'ACTE.**

N^o 8.

4 Unis. *p*

pp Unis.

pizz. arco.

pizz.

1 2 3 4 5 6 7

Unis. arco. *fz*

pizz.

All^o § 1 Unis. *p*

1 *p* *f* *p*

1

Très vite. **Très vite.**

lento. *rit.*

1

§ 1 *p* Unis. *f*

All^o

N^o 10

All^{to}

V^{lle} et C. BASSE.

17

Musical notation for the first system, featuring a single bass line. The notation includes a treble clef, a key signature of two flats (B-flat and E-flat), and a 6/8 time signature. The piece begins with a section marked 'pizz.' (pizzicato). The first measure contains a repeat sign. The notation continues with a series of eighth and sixteenth notes. A section marked 'Unis.' (unison) begins, with a 'p' (piano) dynamic marking. The system concludes with a section marked 'arco.' (arco) and a 'p' dynamic marking.

Musical notation for the second system, featuring a grand staff (treble and bass clefs). The notation includes a key signature of two flats and a 6/8 time signature. The system begins with a section marked 'pizz.' (pizzicato). The first measure contains a repeat sign. The notation continues with a series of eighth and sixteenth notes. A section marked 'Unis.' (unison) begins, with a 'f' (forte) dynamic marking. The system concludes with a section marked 'pizz.' (pizzicato) and a 'p' (piano) dynamic marking.

Musical notation for the third system, featuring a single bass line. The notation includes a key signature of two flats and a 6/8 time signature. The system begins with a section marked 'Unis.' (unison) and 'arco.' (arco). The notation continues with a series of eighth and sixteenth notes. A section marked 'rit.' (ritardando) begins. The system concludes with a section marked 'pizz.' (pizzicato) and a 'p' (piano) dynamic marking. Above the staff, there are markings for '1^{re} fois.' and '2^e fois.' with a repeat sign.

All^o

Musical notation for the fourth system, featuring a grand staff (treble and bass clefs). The notation includes a key signature of two flats and a 6/8 time signature. The system begins with a section marked 'p' (piano) and 'Unis.' (unison). The notation continues with a series of eighth and sixteenth notes. The system concludes with a section marked 'Unis.' (unison).

Mod^{to}

Musical notation for the fifth system, featuring a grand staff (treble and bass clefs). The notation includes a key signature of two flats and a 6/8 time signature. The system begins with a section marked 'f' (forte) and 'Unis.' (unison). The notation continues with a series of eighth and sixteenth notes. A section marked 'p' (piano) begins. The system concludes with a section marked 'fp' (fortissimo piano) and 'Unis.' (unison).

Musical notation for the sixth system, featuring a grand staff (treble and bass clefs). The notation includes a key signature of two flats and a 6/8 time signature. The system begins with a section marked 'pizz.' (pizzicato) and 'arco.' (arco). The notation continues with a series of eighth and sixteenth notes. A section marked 'Unis.' (unison) begins. The system concludes with a section marked 'arco.' (arco) and 'Unis.' (unison).

Divisi.

Musical notation for the seventh system, featuring a grand staff (treble and bass clefs). The notation includes a key signature of two flats and a 6/8 time signature. The system begins with a section marked 'Divisi.' (divisi). The notation continues with a series of eighth and sixteenth notes. The system concludes with a section marked '2' (second ending).

arco.
pizz. **f** Divisi.

p Unis.

p pizz. Divisi. *cresc.*

p Divisi. Unis. **ff** Unis. All^o

N^o 11. All^o Unis. **p** **f**

1 2 3 4 5 6 7 **f**

p **f** **p**

1^{re} fois. 2^e fois. Unis. 1 8 **f**

N^o 12. *Mod^{to}*
Unis.