

Confitebor. a 2. Voci, Con Stru!

Violino Primo.

Andantino

The image shows a handwritten musical score for the first violin part of a piece titled "Confitebor. a 2. Voci, Con Stru!". The tempo is marked "Andantino". The score consists of 12 staves of music. The notation includes various rhythmic values, slurs, and dynamic markings. The key signature has one sharp (F#), and the time signature is 9/8. The music is written in a cursive, handwritten style. There are some stains on the paper, particularly in the middle section.

Volte

Handwritten musical notation on three staves. The first staff contains a sequence of eighth and sixteenth notes. The second staff features a melodic line with slurs and ties. The third staff shows a bass line with chords and a final whole note.

Memorialfest.

Largo.

Memorieri

Andantino.

Handwritten musical notation on a single staff, featuring a melodic line with various note values and rests. A dynamic marking 'f' is present at the end of the staff.

Handwritten musical notation on a single staff, continuing the melodic line from the previous staff.

Handwritten musical notation on a single staff, continuing the melodic line.

Handwritten musical notation on a single staff, including a section marked with a large 'A' and a key signature change to two flats.

Handwritten musical notation on a single staff, showing a series of chords and some melodic fragments.

Handwritten musical notation on a single staff, featuring a series of chords with dynamic markings 'f' and 'p'.

Handwritten musical notation on a single staff, continuing the chordal sequence.

Handwritten musical notation on a single staff, showing a melodic line with a dynamic marking 'p'.

Handwritten musical notation on a single staff, continuing the melodic line.

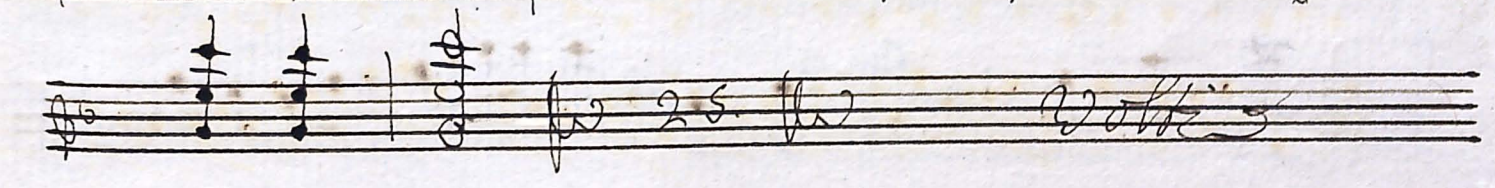
Handwritten musical notation on a single staff, featuring a series of chords with a dynamic marking 'f'.

Handwritten musical notation on a single staff, continuing the chordal sequence.

Handwritten musical notation on a single staff, showing a melodic line with a dynamic marking 'f'.

Vollis

This image shows a page of handwritten musical notation on ten staves. The notation includes various clefs (treble and bass), notes, rests, and dynamic markings such as *pp*, *mf*, and *ff*. The music is written in a cursive, handwritten style. The first staff begins with a treble clef and a key signature of one sharp (F#). The second staff has a bass clef and a key signature of one sharp. The third staff has a treble clef and a key signature of one sharp. The fourth staff has a bass clef and a key signature of one sharp. The fifth staff has a treble clef and a key signature of one sharp. The sixth staff has a bass clef and a key signature of one sharp. The seventh staff has a treble clef and a key signature of one sharp. The eighth staff has a bass clef and a key signature of one sharp. The ninth staff has a treble clef and a key signature of one sharp. The tenth staff has a bass clef and a key signature of one sharp. The word *Adagio* is written in the eighth staff. The page shows signs of age, including some staining and discoloration.



6
Gloria
Largo

Handwritten musical score for the 'Gloria' section, marked 'Largo'. The score consists of eight staves of music. The notation includes various note values, rests, and dynamic markings such as 'p' and 'f'. The music is written in a single system across the staves.

Sicut erat //

Allegro

Handwritten musical score for the 'Sicut erat' section, marked 'Allegro'. The score consists of four staves of music. The notation includes various note values, rests, and dynamic markings such as 'p', 'f', and 'mf'. The music is written in a single system across the staves.

Handwritten musical notation on two staves. The top staff contains a melodic line with various note values and rests. The bottom staff contains a bass line with chords and single notes.

Handwritten musical notation on two staves. The top staff features a melodic line starting with a 'no' marking. The bottom staff shows a bass line with chords.

Handwritten musical notation on a single staff showing a bass line with chords.

Handwritten musical notation on a single staff showing a bass line with chords.

Handwritten musical notation on a single staff showing a bass line with chords.

Handwritten musical notation on a single staff showing a bass line with chords and a melodic flourish at the end.

Handwritten musical notation on a single staff showing a melodic line with various note values.

Sanctus Deo