



GRAINGER

BRITISH
FOLK-MUSIC
SETTINGS

N^o 22

“Country Gardens”

Piano Solo

Price, 60 cents, net



(In U. S. A.)

G. SCHIRMER, INC., NEW YORK

“Country Gardens”

"COUNTRY GARDENS"

English Morris Dance Tune

The dance melody on which this piano setting of mine is based was collected from traditional sources by Cecil J. Sharp and is published in "Morris Dance Tunes" by Cecil J. Sharp and Herbert C. Macilwaine (Novello & Co., Ltd., London), and in "The Morris Book," by Cecil J. Sharp and Herbert C. Macilwaine (Novello & Co., Ltd., London).

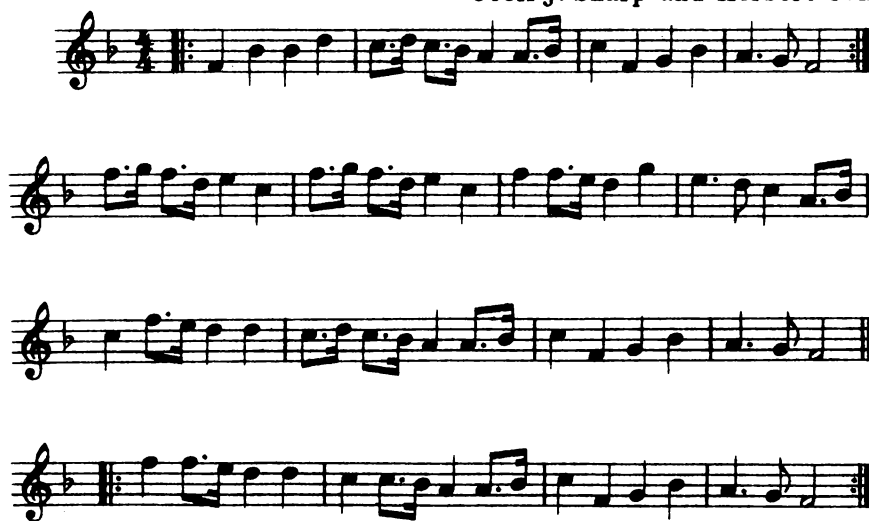
The traditional tune is as follows:

"Country Gardens" Handkerchief Dance

(Morris Dance Tunes, Set 1, No. 3)

Collected and arranged by
Cecil J. Sharp and Herbert C. Macilwaine

M.M. $\text{♩} = 92$



My use of the same has very kindly been sanctioned by Mr. Cecil J. Sharp and Novello & Co., Ltd., London.

PERCY ALDRIDGE GRAINGER.

New York City, Nov., 1918.

BRITISH FOLK-MUSIC SETTINGS

Lovingly and reverently dedicated to the memory of Edvard Grieg

Nr 22. "Country Gardens"

(By kind permission of Novello & Co., Ltd.)

* English Morris Dance Tune

Collected by

Cecil J. Sharp

and set for piano by

Rough-sketches for room-music about 1906
Worked out for piano, spring, 1918

* See Morris Dance Tunes (Novello & Co., Ltd.) and The Morris Book (Novello & Co., Ltd.) both by Cecil J. Sharp and Herbert C. Macilwaine.

PERCY ALDRIDGE GRAINGER

Birthday-gift,
mother, July 3, 1918

Fairly fast (M.M. $\text{♩} = \text{about } 96$) and with a leisurely swing

The top notes louder and sharper than the rest

Piano

*mp R.H. detached
L.H. short*

p

Ped. * Ped. * Ped. * Ped. * Ped. * Ped. * Ped. *

Ped. * Ped. * Ped. * Ped. * Ped. * Ped. * Ped. *

Copyright, 1919, by Percy Grainger
International Copyright secured
Printed in the U. S. A.

or

sf

The lower voice of the right hand slightly louder than the top voice

p

very short

ped. * ped. * ped. *

Bring out the lower voice of the R.H.

sf

p

louden

ped. * ped. * ped. * ped. * ped. * *sf* ped. * ped. *

Very gently and smoothly

p

pp

pp

ped. * ped. * ped. * ped. * ped. *

p

pp

ped. * ped. * ped. * ped. * ped. *

or

very sharp

ff

sff *sff*

violently wrenched

Ped. Ped. Ped. Ped. Ped. Ped. Ped. Ped. Ped. Ped. Ped. *

f

Ped. * Ped. * Ped. * Ped. * Ped. * Ped. * Ped. *

p

3 5 3 4 3 4 3 4

4 1 2 3 4

Ped. Ped. Ped. Ped. Ped. *

Ped. * Ped. * Ped. *

ff
sf sf sf sf sf sf
fff *violently*
Ped. * Ped. * Ped. * Ped. * Ped. * Ped.

or

Top notes sharp

mp
wrenched but short (no pedal)
Ped. * Ped. * Ped. *

sf sf
mp mp mp mp
louden hugely
sf mf sf mf f ff
Ped. * Ped. * Ped. * Ped. * Ped. * Ped. *

Slow off

f detached and heavy louden steadily
sff sfff ffff
fff
Ped. * Ped. * Ped. * Ped. *
fist
fist

Written out,
Fort Jay, Governor's Island, N.Y.
June 29, 1918

