

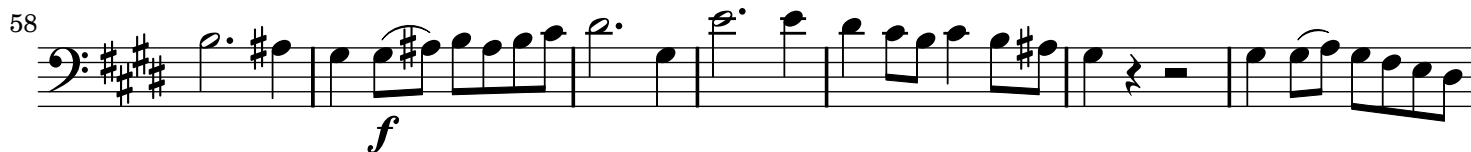
Duo pour 2 violoncelles op.50 n°5

Violoncelle II

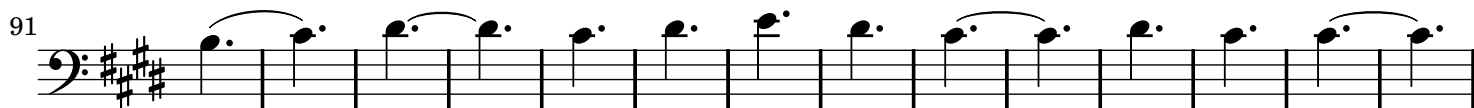
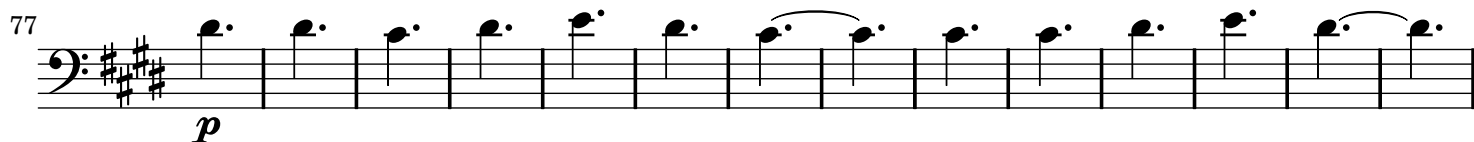
Jacques OFFENBACH

(1819-1880)

Allegro non troppo



Allegretto



116  Musical notation for measures 116-126. The key signature is three sharps (F#, C#, G#). The notation includes eighth and sixteenth notes, rests, and a first ending bracket over the final measure. Dynamics include *f*.

127  Musical notation for measures 127-136. The key signature is three sharps. The notation includes eighth and sixteenth notes, rests, and a first ending bracket over the final measure.

137  Musical notation for measures 137-147. The key signature is three sharps. The notation includes eighth and sixteenth notes, rests, and a first ending bracket over the final measure. Dynamics include *p*.

148  Musical notation for measures 148-158. The key signature is three sharps. The notation includes eighth and sixteenth notes, rests, and a first ending bracket over the final measure.

159  Musical notation for measures 159-167. The key signature is three sharps. The notation includes eighth and sixteenth notes, rests, and a first ending bracket over the final measure.

168  Musical notation for measures 168-179. The key signature is three sharps. The notation includes eighth and sixteenth notes, rests, and a first ending bracket over the final measure. Dynamics include *f*.

180  Musical notation for measures 180-190. The key signature is three sharps. The notation includes eighth and sixteenth notes, rests, and a first ending bracket over the final measure.

191  Musical notation for measures 191-200. The key signature is three sharps. The notation includes eighth and sixteenth notes, rests, and a first ending bracket over the final measure. Dynamics include *f*. Performance markings include *rall.* and *a tempo*.

201  Musical notation for measures 201-210. The key signature is three sharps. The notation includes eighth and sixteenth notes, rests, and a first ending bracket over the final measure. Dynamics include *mf* and *p*. Performance marking includes *rall.*