

The Emperour of Germany March

(from: A Choice Collection of Ayres - Various)
for Trumpet & Organ

Score

Marziale ♩ = 60

Jeremiah Clarke (c.1674 - 1707)

Arr. Michel Rondeau

Trumpet in C

Organ

Detailed description: This system contains the first four measures of the score. The Trumpet in C part is written on a single staff in treble clef with a key signature of one sharp (F#) and a common time signature (C). The Organ part consists of two staves, treble and bass clef, also in one sharp and common time. The music begins with a treble clef and a key signature of one sharp. The organ accompaniment features a steady bass line and chords in the treble. The trumpet part plays a melodic line with eighth and quarter notes. The system concludes with a double bar line and repeat dots.

C Tpt.

Org.

Detailed description: This system contains measures 5 through 9. The C Trumpet part continues the melodic line from measure 4. The Organ part provides accompaniment with chords and a bass line. Measure 5 is marked with a '5' above the staff. The system ends with a double bar line and repeat dots.

C Tpt.

Org.

Detailed description: This system contains measures 10 through 14. The C Trumpet part has a rest in measure 10, then resumes the melodic line. The Organ part continues with accompaniment. Measure 10 is marked with a '10' above the staff. The system concludes with a double bar line and repeat dots.

The Emperour of Germany March

(from: A Choice Collection of Ayres - Various)

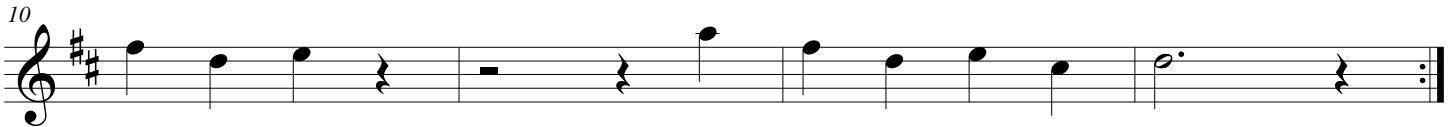
for Trumpet & Organ

Trumpet in C

Jeremiah Clarke (c.1674 - 1707)

Arr. Michel Rondeau

Marziale $\text{♩} = 60$



The Emperour of Germany March

(from: A Choice Collection of Ayres - Various)
for Trumpet & Organ

Organ

Jeremiah Clarke (c.1674 - 1707)

Arr. Michel Rondeau

Trumpet in C

Marziale $\text{♩} = 60$

Organ

C Tpt.

Org.

C Tpt.

Org.