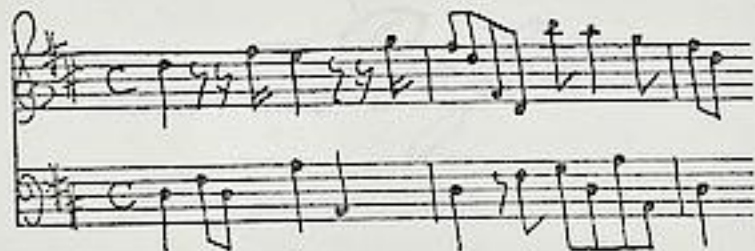


Brioschi, Antonio

BRD DS Mus.ms 121/2

Sinfonie/à/2 Violini/Viola/et/Basso/del Sig^{re} Brioski/[Incipit]/ (D-dur)



Allegro C D-dur - Largo
3/8 A-dur - Presto 2/4
D-dur.

Ms.ca.1750.

34 x 22,5 cm.

WZ: -

4 St.:vl 1,2,vla,b.

1,1,1,2 Bl.

Incipit im Titel von der Hand Graupners.

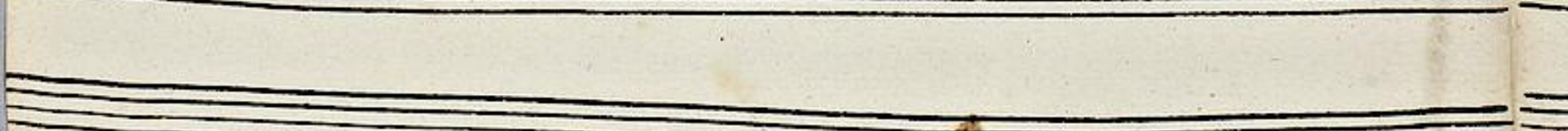
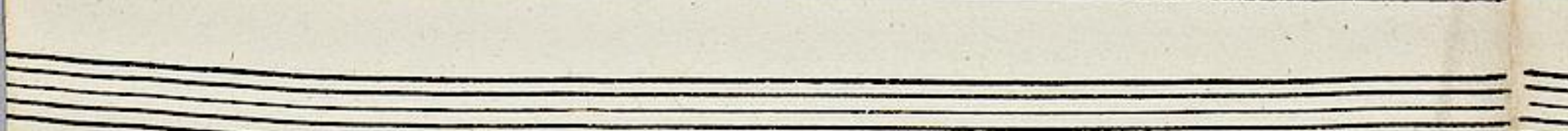
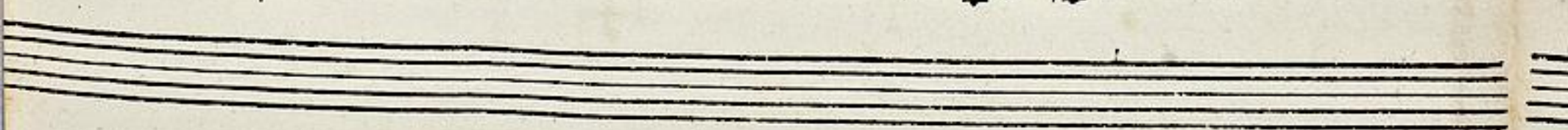
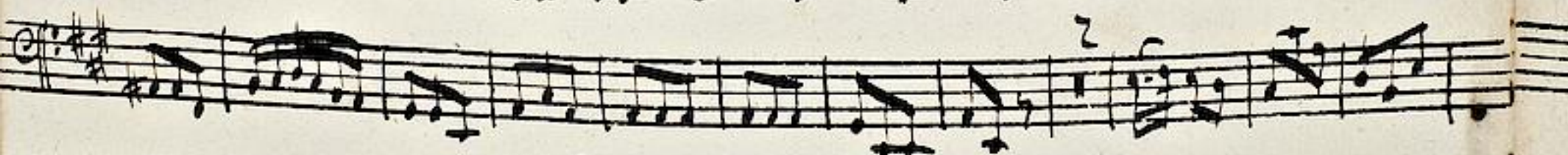
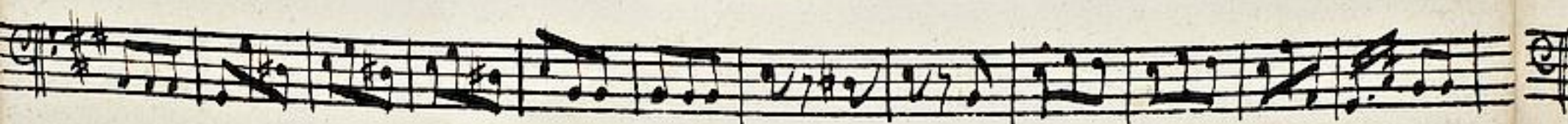
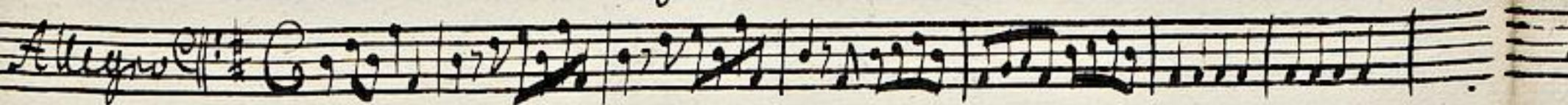
2 Mus 121/2
ms

Sinfonie
à
2 Violini
Viola
et
Basso

del Sigre Briviski



Basso



Presto G major $\frac{2}{4}$

Handwritten musical score for a piece titled "Presto" in G major and 2/4 time. The score consists of eight staves. The first staff begins with the tempo and key signature. The music is written in a single system with various rhythmic values, including eighth and sixteenth notes, and rests. There are some handwritten annotations, such as a "3" above a measure on the fourth staff. The notation is in a cursive, historical style.

Violino I^{mo}

Allegro

The image shows a page of handwritten musical notation for the first violin part. The score is written on ten staves. The first staff begins with the tempo marking 'Allegro' and a treble clef with a key signature of one sharp (F#). The notation is dense, featuring many sixteenth and thirty-second notes, often beamed together. There are several dynamic markings, including 'p' (piano) and 'f' (forte), and some performance instructions like 'arco' (arco) and 'pizz.' (pizzicato). A '3' is written above the fourth staff, possibly indicating a triplet. The tempo changes to 'Adagio' on the eighth staff, where the notation becomes more spacious. The paper is aged and shows some staining at the bottom.

Presto

Violino 2^{do}

Allegro

Largo

Presto

Handwritten musical score on a page with ten staves. The first eight staves contain musical notation in treble clef, G major, 2/4 time. The notation includes various note values, rests, and dynamic markings. The word "Presto" is written at the beginning of the first staff. The last two staves are empty.

Presto 3/4

4