

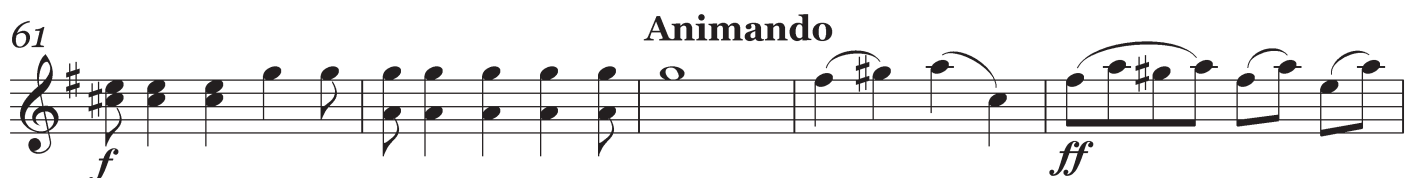
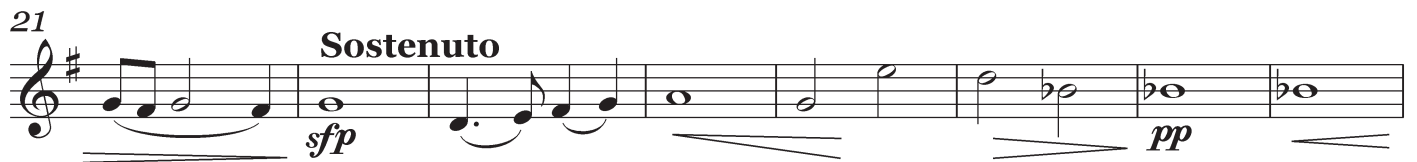
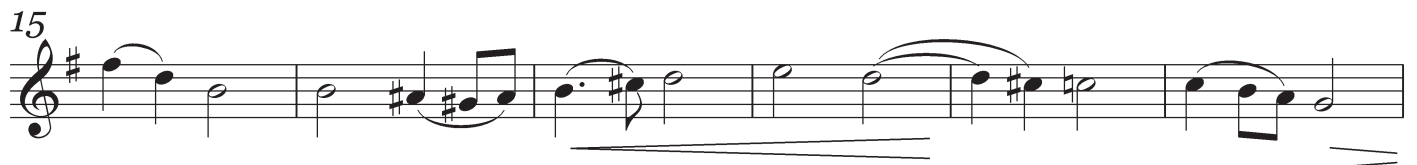
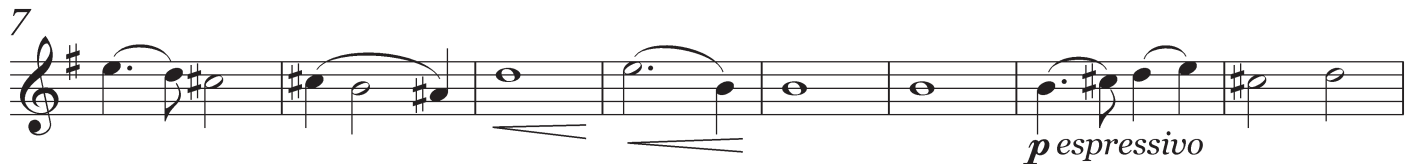
SUITE

para 4 Violines

à Monsieur le Commandeur **ETTORE PINELLI**
Professeur à l'Académie de Ste. Cécile à Rome

Ladislav Gabrielli (1851 - 19??)

Adagio con espressione.



66 **A tempo**

71

dim. *p* *sf* *pp*

GAVOTTA. Moderato

9 *mf* *f*

15

24 **Fine** *sf* *p dim.* *pp*

31 **TRIO. Poco meno mosso**

35 *pizz.* *p* *cresc.* *f*

40 *dim.* *f*

44 **rall.** **A tempo D.C. al Fine** *p cresc. assai* *fpp* *arco*

Moderato solenne.

6 *f sostenuto*

11

14

17 *f*

20 *pp*

23 *cresc. poco a poco*

26 *cresc.*

29 *Sostenuto* *f*

35 *cresc. rall.*

45 *A tempo* *ff*

48