

Schramm No. II.
38. Fach 8. Lage.
No. 9. Sinfonia
C^o VV.ⁿⁱ Oboi, Viola e Basso
15. St.



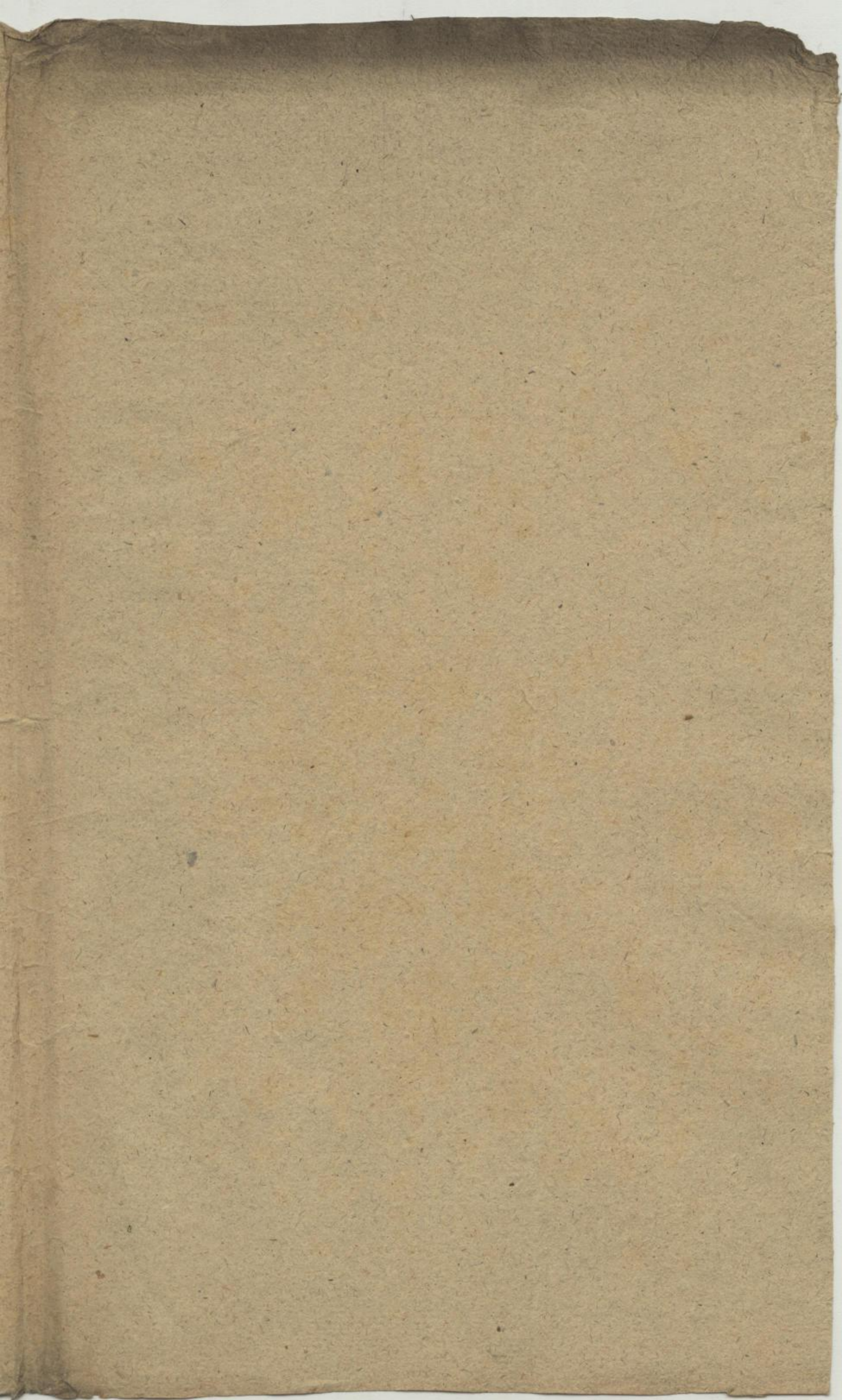
18 Bl.

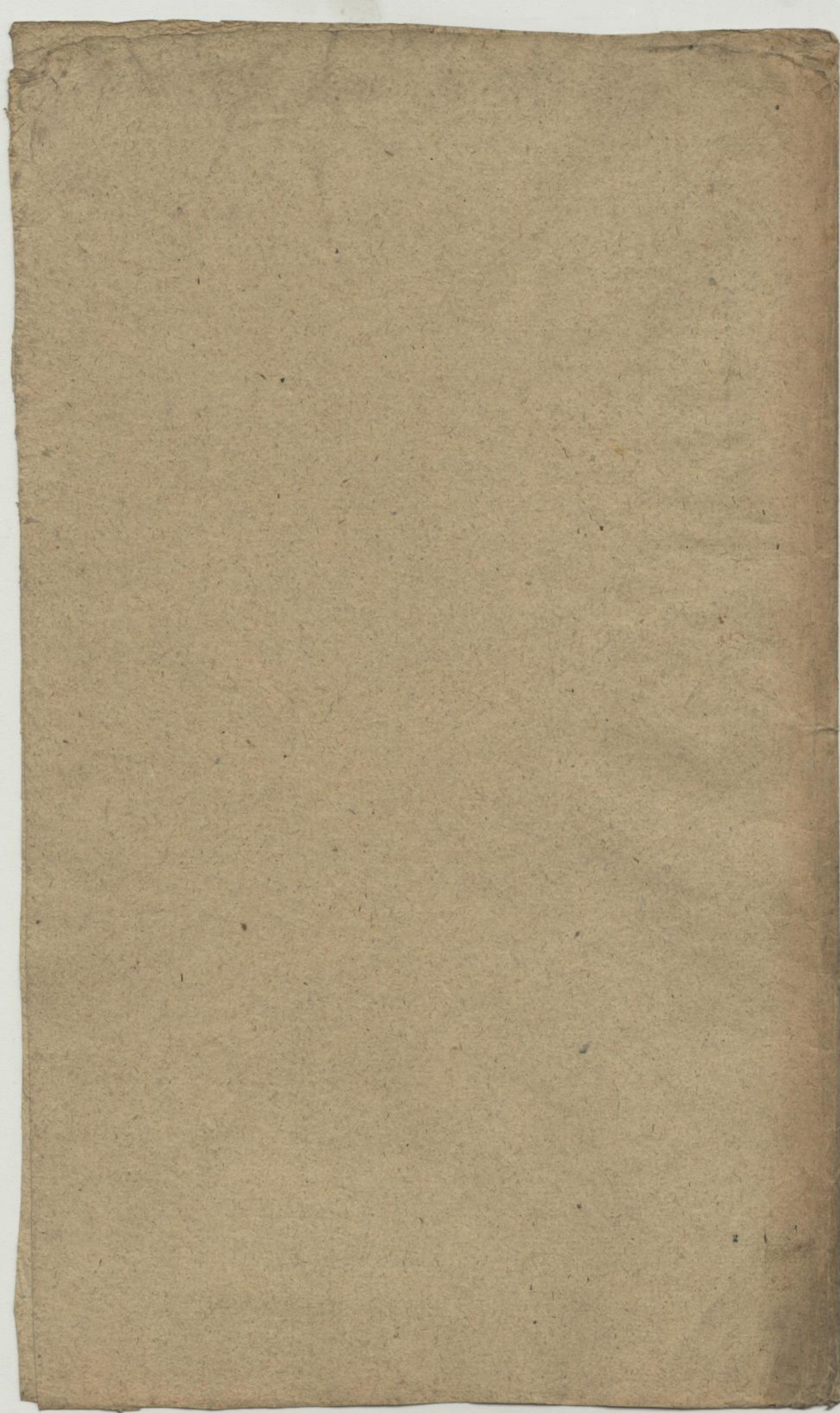
Cx
1525



Mus. 2-N-20, 17a

Sächs.
Landes-
Bibl.





Sinfonia

Violino Primo.

Sigr. P.

Allegro 4/4

pia:
forte
forte
piano
forte
piano
forte
piano
forte
piano
forte
piano
forte

Volti Subito

Ex 1525 Mus 2-N-20,17a



Andante e piano

Handwritten musical score for the first section, "Andante e piano". The score is written on ten staves. It begins with a treble clef, a key signature of two flats (B-flat and E-flat), and a 4/4 time signature. The music features a complex texture with multiple voices, including a prominent bass line. The notation includes various note values, rests, and dynamic markings such as *pianissimo* and *tr* (trills). The section concludes with a double bar line and repeat signs.

Presto

Handwritten musical score for the second section, "Presto". The score is written on ten staves. It begins with a treble clef, a key signature of two flats, and a 3/8 time signature. The music is characterized by a rapid, rhythmic flow with many sixteenth and thirty-second notes. The notation includes various note values, rests, and dynamic markings such as *tr* (trills). The section concludes with a double bar line and repeat signs.

Sinfonia

Violino Primo

Allegro 4/4

p: forte

forte

forte

piano

forte

piano

forte

piano

forte

piano

forte

piano

forte

piano

forte

piano

Seq. Subito

6x 1525 Mus. 2-N-20,17a

Sächs. Landesbibl.

3

Andante e piano

Handwritten musical score for the first section, marked "Andante e piano". The music is written on ten staves in a single system. The key signature is one flat (B-flat), and the time signature is 4/4. The notation includes various rhythmic values, including eighth and sixteenth notes, and rests. There are several trills marked with "tr" and some triplets marked with "3". A dynamic marking "pp:" is visible on the fourth staff. The section concludes with a double bar line and repeat dots.

Presto

Handwritten musical score for the second section, marked "Presto". The music is written on ten staves in a single system. The key signature remains one flat (B-flat), and the time signature changes to 3/8. The notation is more rhythmic, featuring many eighth and sixteenth notes. There are several trills marked with "tr". The section concludes with a double bar line and repeat dots, followed by a large scribble.

Sinfonia

Violino Primo

Allegro 4/4

piano

forte

forte

piano

forte

piano

forte

piano

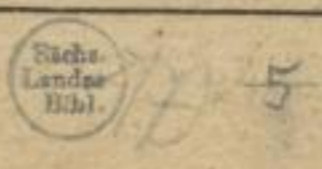
forte

piano

forte

Seq. Subito

8x 1525 Mus. 2-N-20, 47a



Andante epiano

Handwritten musical score for the first section, titled "Andante epiano". The music is written on ten staves. The key signature is one flat (B-flat) and the time signature is 7/4. The notation includes various rhythmic values, including eighth and sixteenth notes, and rests. There are several trills marked with a small 'tr' above the notes. A dynamic marking "p" (piano) is present. A repeat sign is visible in the fourth staff. The section concludes with a double bar line and repeat dots.

Handwritten musical score for the second section, titled "Presto". The music is written on ten staves. The key signature remains one flat (B-flat) and the time signature changes to 3/8. The notation is more rhythmic, featuring many eighth and sixteenth notes. There are several trills marked with a small 'tr' above the notes. The section concludes with a double bar line and repeat dots, followed by a large scribble of diagonal lines.

Sinfonia

Violino Secondo.

Allegro 4/4

pia- *forte*

for. *piano*

Seq. *piano* *forte*

Seq. subito

6x1525 Mus. 2-N-20, 17a



7

Seq. subito

Andante e piano 4/8

Presto 3/8

Sinfonia

Violino Secondo.

Handwritten musical score for Violino Secondo. The score is written on 15 staves. The first staff begins with the tempo marking "Allegro" and the time signature "4/4". The key signature is two flats (B-flat and E-flat). The music features various dynamics including *tr* (trills), *ma.* (piano), *for.* (forte), *piano*, *forte*, and *forte*. The notation includes eighth and sixteenth notes, rests, and trills.

Seq. Subito

6 x 7525 Mus. 2-N-20, 97a



9

Andante e piano 4/4

Presto 3/8

Sinfonia

Violino Secondo.

Allegro

Handwritten musical score for Violino Secondo, Sinfonia. The score consists of 15 staves of music in 2/4 time, key of B-flat major. It includes various musical notations such as notes, rests, trills, and dynamic markings like 'piano', 'for.', and 'Seq. subito'.

Ms. 1525 Mus. 2-N-2077a



Andante, e piano

Handwritten musical score for the first section, "Andante, e piano". The music is written on ten staves in a single system. The key signature has two flats (B-flat and E-flat), and the time signature is 3/8. The notation includes various rhythmic values, slurs, and trills. A dynamic marking "pianissimo" is written below the third staff. The section concludes with a double bar line and repeat dots.

Handwritten musical score for the second section, "Presto". The music is written on ten staves in a single system. The key signature remains two flats, and the time signature changes to 3/8. The notation is more rhythmic and includes many slurs and trills. The section concludes with a double bar line and repeat dots, followed by a large scribble.

Sinfonia

Violetta

Allegro

pia. *for.*

for. *pia.* *for.*

piano *forte*

Seq. Subito

G² 1525 Mus. 2-N-20, 17a



13

Andante, e piano

Handwritten musical notation for the first section, marked *Andante, e piano*. It consists of five staves of music in 2/4 time, featuring a melodic line with eighth and sixteenth notes and a bass line with quarter notes. The piece concludes with a double bar line and repeat signs.

Handwritten musical notation for the second section, marked *Presto*. It consists of seven staves of music in 3/8 time, characterized by a rapid, rhythmic melody. The notation includes various articulations such as accents and slurs, and ends with a double bar line and a flourish.

Sinfonia

Violetta

Allegro

pia.

for.

forte f.

pia.

for.

piano

forte

Seq subito

Ex 1525 Mus. 2-N-20, 17a

Sächs.
Landes-
Bibl.

45

12

Andante e piano

Handwritten musical notation for the first section, marked "Andante e piano". It consists of five staves of music. The first staff begins with a treble clef, a key signature of one flat (B-flat), and a 4/7 time signature. The notation includes various note values, rests, and dynamic markings such as *p* and *f*. The section concludes with a double bar line and repeat signs.

Handwritten musical notation for the second section, marked "Presto". It consists of ten staves of music. The first staff begins with a treble clef, a key signature of one flat (B-flat), and a 3/8 time signature. The notation is more rhythmic and includes dynamic markings such as *f* and *tr*. The section concludes with a double bar line and repeat signs.

Sinfonia

Basso.

Allegro

piano

forte

for.

pia.

for.

piano

for.

pia.

for.

Seq. Subito

Ms. 1525 Mus. 2-N-20, 77a



47

Andante, e piano $\text{D:}\flat$ $\frac{2}{4}$

Handwritten musical notation for the first section, 'Andante, e piano'. It consists of five staves. The first staff is the treble clef with a key signature of one flat and a 2/4 time signature. The second and third staves are the alto clef. The fourth and fifth staves are the bass clef. The music features a steady eighth-note accompaniment in the bass and a more melodic line in the treble and alto parts.

Presto $\text{D:}\flat$ $\frac{3}{8}$

Handwritten musical notation for the second section, 'Presto'. It consists of ten staves. The first staff is the treble clef with a key signature of one flat and a 3/8 time signature. The second and third staves are the alto clef. The fourth and fifth staves are the bass clef. The music is characterized by a fast, rhythmic eighth-note accompaniment in the bass and a more melodic line in the treble and alto parts. The section ends with a double bar line and a large scribble.

Sinfonia

Basso.

Allegro 3/4

piano *forte* *for.* *pia.* *for.* *pia.* *for.* *pia.*

Seq Subito

Cx1525^r - Mus. 2-N-20, 17a



Andante e piano 2/4

Presto 3/8

Sinfonia

Cembalo

Allegro $\frac{3}{4}$

piano

forte

forte

piano

forte

piano

piano

for.

piano

for.

Seq Subito

Ms. 2-N-20.17a



Andante piano $\text{J:}\flat\frac{3}{4}$

Presto $\text{J:}\flat\frac{3}{8}$

Sinfonia

Bassono.

Allegro $\text{F} \flat$ $\frac{3}{4}$

pia. *forte* *for.* *pia.* *for.* *pia.* *for.* *pia.* *for.* *pia.* *for.* *pia.* *for.* *pia.* *for.*

Seq. subito

C 1525 Mus. 2-N-20, 17a



16-25

Andante, e piano $\text{G}:\flat$ $\frac{2}{4}$

Presto $\text{G}:\flat$ $\frac{3}{8}$

[Handwritten signature]

Sinfonia

Bassono

Allegro $\text{F}:\flat$ $\frac{2}{4}$

piano

forte

forte

for.

pia.

piano

for.

for.

pia.

for.

Seq. subito

6^x 1525 Mus. 2-N-20,17a



27

Andante e piano $\text{G:} \flat \frac{2}{4}$



Presto $\text{G:} \flat \frac{3}{8}$



Oboë Primo

Handwritten musical score for Oboë Primo, consisting of 12 staves. The score includes various musical notations such as notes, rests, and dynamic markings. The tempo markings are *All.^o* at the beginning, *adagio* in the middle, and *Presto* towards the end. The dynamics range from *piano* to *forte*. The piece concludes with a double bar line and a final flourish.

G^x 1525 Mas. 2-N-20,17a

23



Oboe 2do

Handwritten musical score for Oboe 2do, consisting of 14 staves of music. The notation includes various rhythmic values, accidentals, and dynamic markings. The score begins with an *all.* (allegro) tempo marking. Dynamics include *forte*, *piano*, and *ad. tacet*. There are also markings for *h* (harmonics) and *9* (fingerings). The piece concludes with a double bar line and a final flourish.

G^x 1525 Mus. 2-N-20,17a



