

~~No 38~~

[Symfoni, D]

Sinfonie D#
à 3.

Del Sig: Alberti.

Violino 1^o _____ 2. Scemp.

Violino 2^o _____ 1.

Basso _____ 4.

~~Op. 1~~ Ex. 9

[Symfoni, D.]

Sinfonia a 3. Voc.

Violino Primo

Violino Secondo

e Basso

Alleg. moder.



[Symphonie, D]

Op. 8
C.A.A.

Alb. Str.

Violino Primo

Allegro

A handwritten musical score consisting of six staves. The notation is in a single system, likely for a single melodic line. The first staff begins with a treble clef and a key signature of one sharp (F#). The music is written in a fluid, cursive style. The second staff contains a large, ornate flourish that spans across the first two staves. The third staff has a dynamic marking 'p:' (piano) above it. The fourth staff begins with a tempo marking 'Alleg.' (Allegretto) written in a decorative script. The fifth and sixth staves continue the melodic line, ending with a double bar line. The paper shows signs of age and wear, with some smudges and discoloration.

Vol 4

Andante

A handwritten musical score consisting of ten staves. The notation is in a single system, likely for a single melodic line. The key signature has one sharp (F#), and the time signature is 3/8. The music is written in a cursive, handwritten style. The first staff begins with the word "Andante" written in a large, flowing script. The notes are mostly eighth and sixteenth notes, with some rests. The paper shows signs of age, including some smudges and a small stain at the bottom right.



[Symphony, D]

Op. 18
Ex. A.

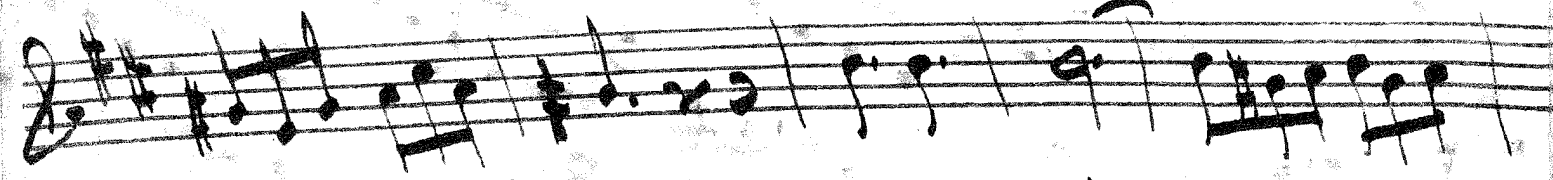
Alb. Berlioz

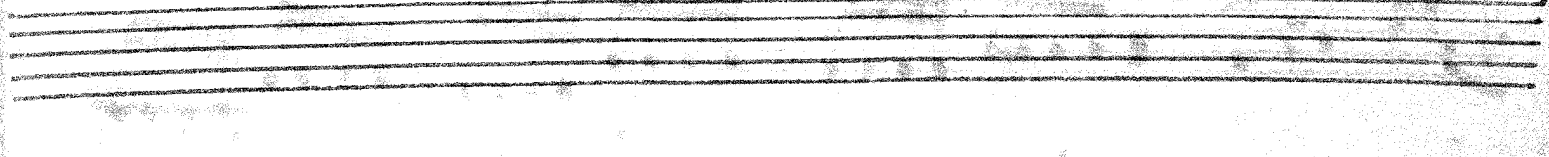
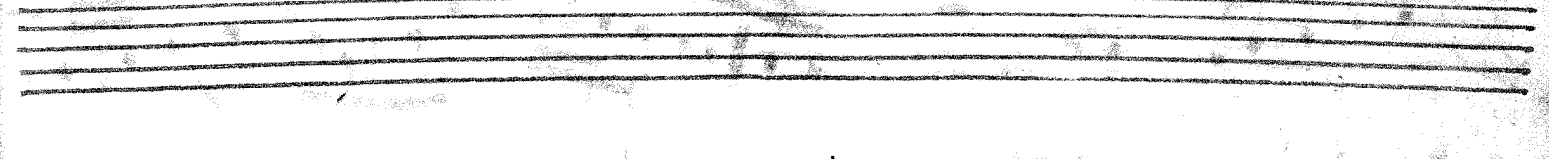
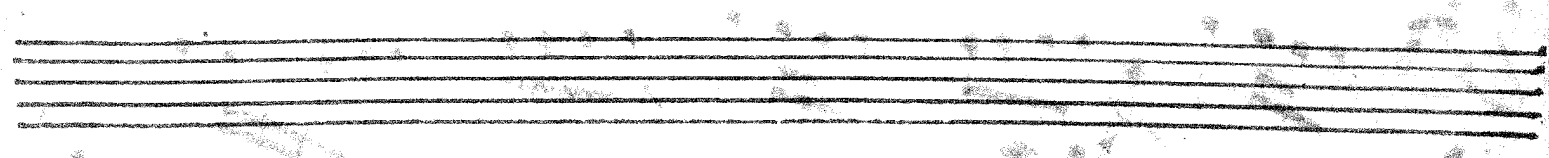
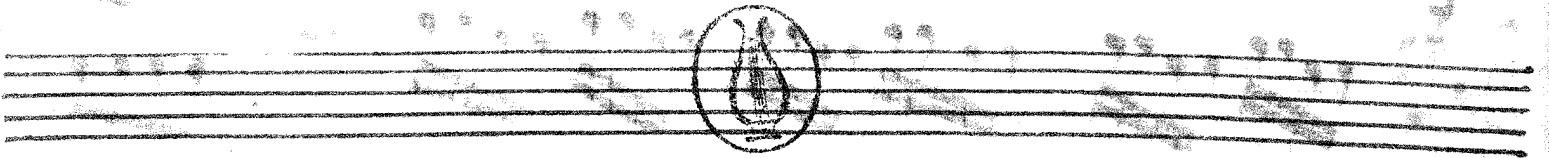
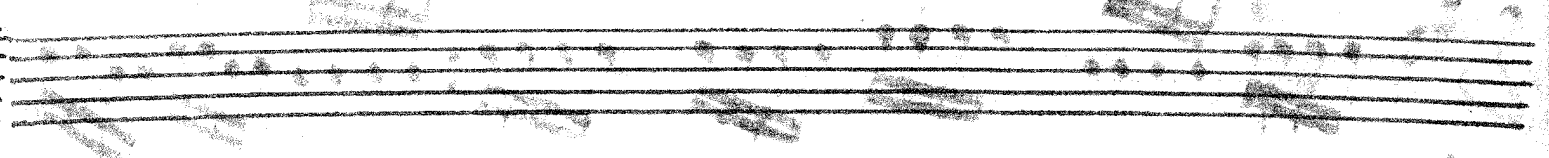
Alto Violino e Contr.

This image shows a page of handwritten musical notation for the Alto Violino e Contrabasso part of a symphony. The score is written on ten staves. The first staff begins with a treble clef, a key signature of one sharp (F#), and a 2/4 time signature. The music consists of a series of rhythmic patterns, including eighth and sixteenth notes, often beamed together. There are several rests throughout the piece. The notation is dense and characteristic of 19th-century manuscript notation. The paper shows signs of age, with some staining and wear.

A handwritten musical score consisting of seven staves. The notation is written in black ink on aged, slightly yellowed paper. The first six staves contain musical notation, including treble clefs, a key signature of one sharp (F#), and various rhythmic values such as eighth and sixteenth notes, often beamed together. There are some corrections and erasures visible, particularly on the fourth and fifth staves. The seventh staff is mostly blank, with some faint pencil markings and a large, faint scribble in the center.

Handwritten scribble or signature





Andante No. 80

The image displays a handwritten musical score for a piece titled "No. 80". The score is written on ten staves. The first staff includes the tempo marking "Andante" and the time signature "2/4". The key signature consists of one sharp (F#). The notation is a mix of treble and bass clefs. The music features a variety of rhythmic patterns, including eighth and sixteenth notes, as well as rests. There are several instances of beamed eighth notes and sixteenth notes, suggesting a lively yet graceful melody. The handwriting is clear and legible, typical of a composer's manuscript. The paper shows signs of age, with some staining and a slightly yellowed tone.

Handwritten musical notation on a single staff, featuring a treble clef, a key signature of one sharp (F#), and a 4/4 time signature. The melody consists of eighth and quarter notes, ending with a double bar line.

Handwritten musical notation on a single staff, featuring a treble clef, a key signature of one sharp (F#), and a 4/4 time signature. The melody consists of eighth and quarter notes, ending with a double bar line. The word "Solo" is written in cursive above the staff.

Handwritten musical notation on a single staff, featuring a bass clef, a key signature of one sharp (F#), and a 4/4 time signature. The melody consists of eighth and quarter notes, ending with a double bar line.

Handwritten musical notation on a single staff, featuring a bass clef, a key signature of one sharp (F#), and a 4/4 time signature. The melody consists of eighth and quarter notes, ending with a double bar line.

Five empty musical staves.

Five empty musical staves with a large, faint, circular scribble in the center.

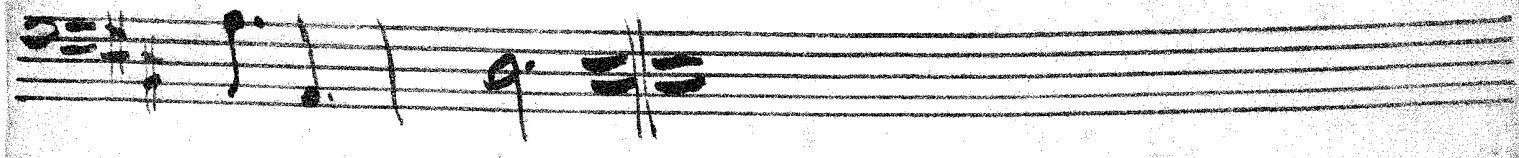
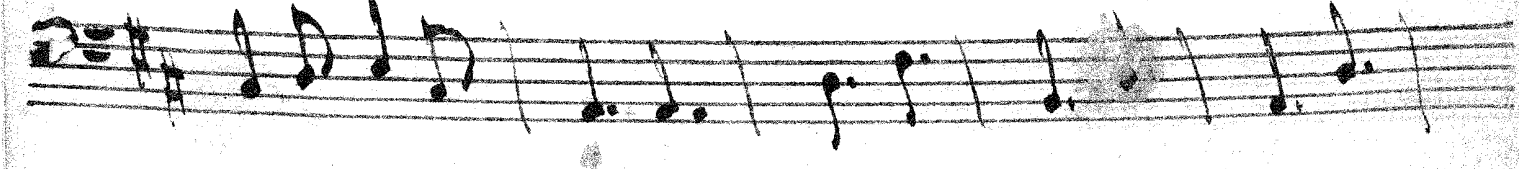
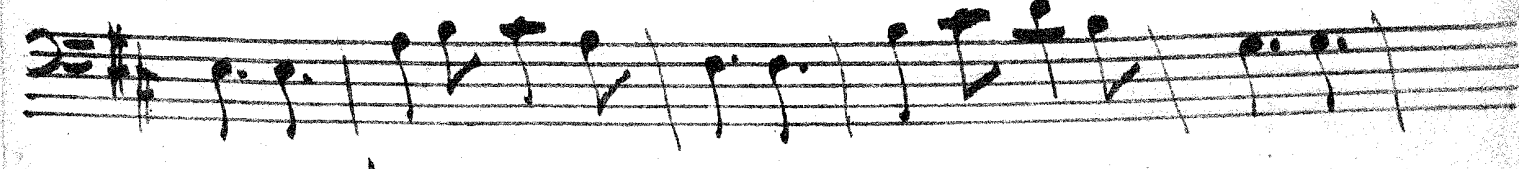
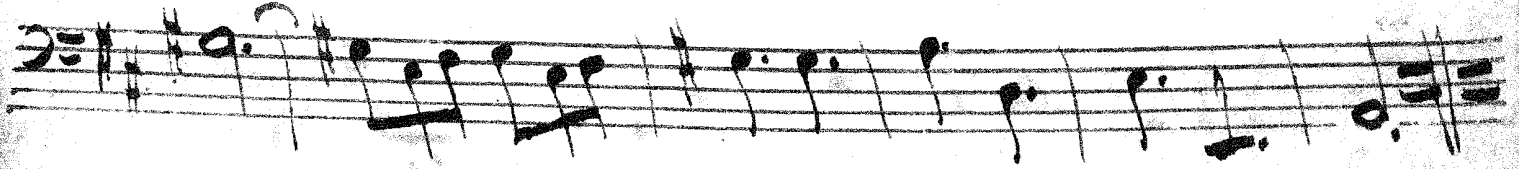
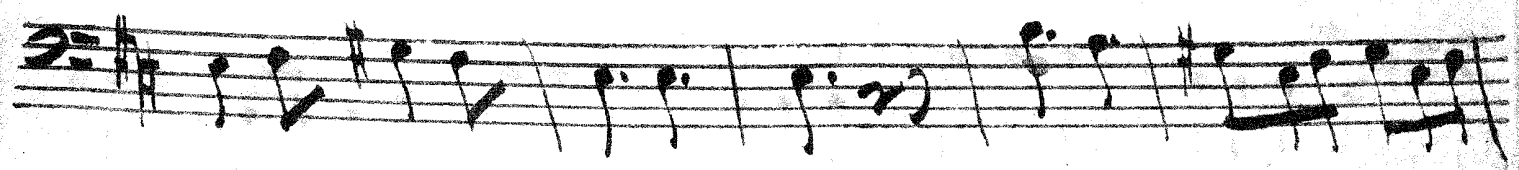
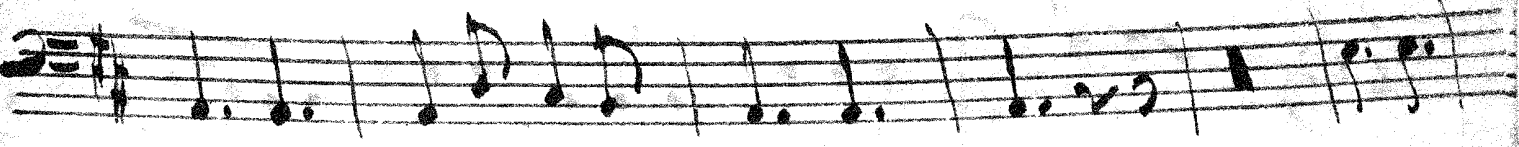
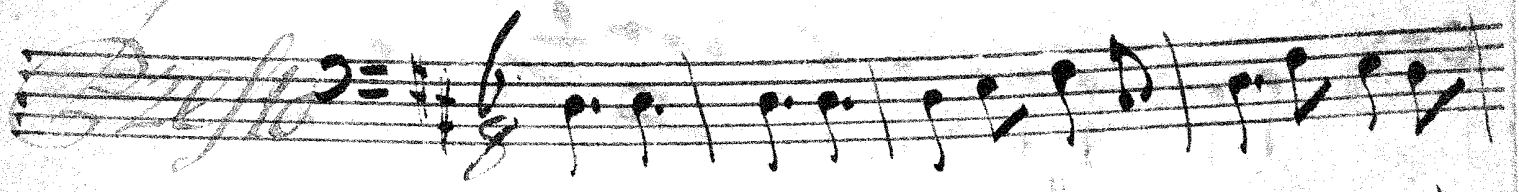
Five empty musical staves.

Five empty musical staves.

Five empty musical staves.

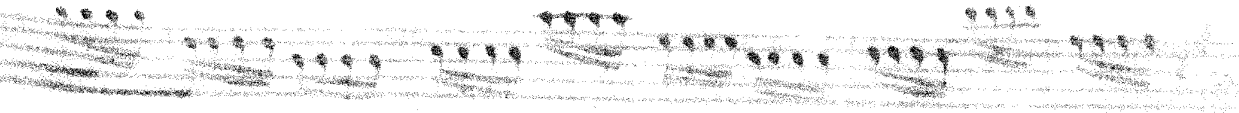
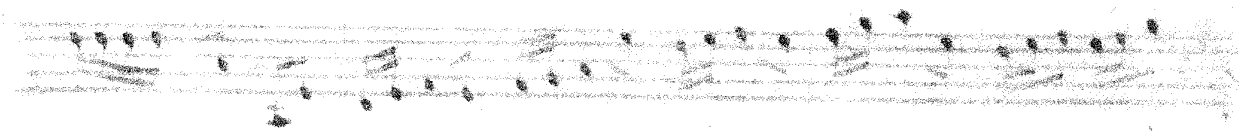
Five empty musical staves.

Handwritten title or notes



Violino Primo

Op. 1
No. 1



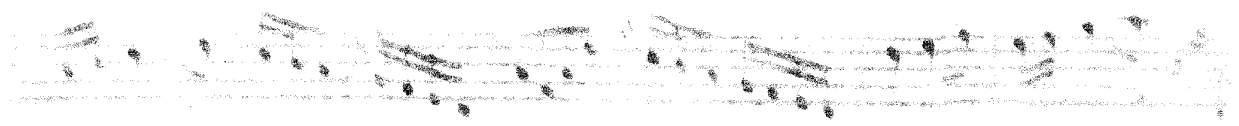
[Symfonic, D.]



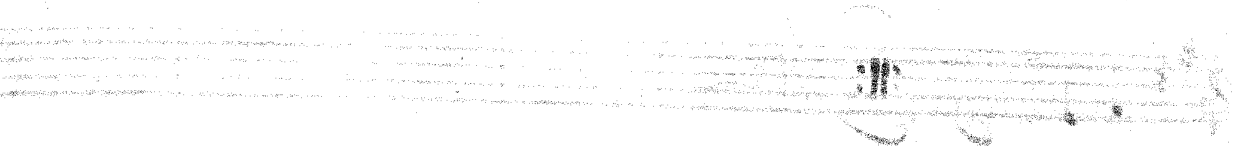
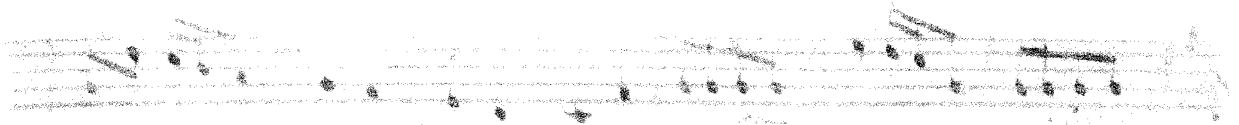
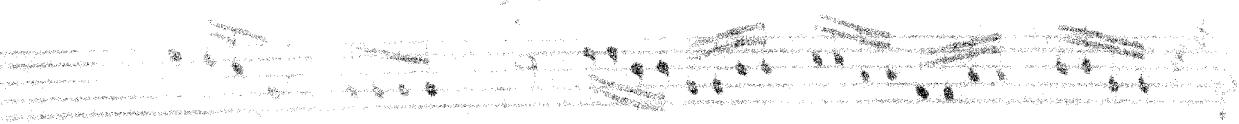
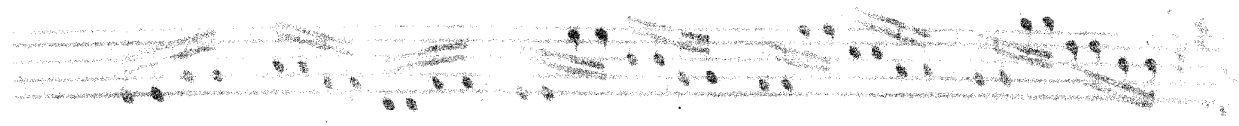
Sinfonia.



Violino Primo



of Alberti.



Sinfonia Violini Primi

Alllegro

pia: *for:*

pia: *for:*

Adagio 3/8

Handwritten musical notation for the Adagio section, consisting of three staves of music. The first staff begins with a treble clef, a key signature of one sharp (F#), and a 3/8 time signature. The music features a melodic line with eighth and sixteenth notes, and a bass line with chords and eighth notes. The second and third staves continue the piece, with the third staff ending with a double bar line and a flourish.

Presto 6/8

Handwritten musical notation for the Presto section, consisting of ten staves of music. The first staff begins with a treble clef, a key signature of one sharp (F#), and a 6/8 time signature. The music is characterized by a fast, rhythmic melody with many sixteenth and thirty-second notes. The bass line provides a steady accompaniment with eighth and sixteenth notes. The section concludes with a double bar line and a flourish on the tenth staff.

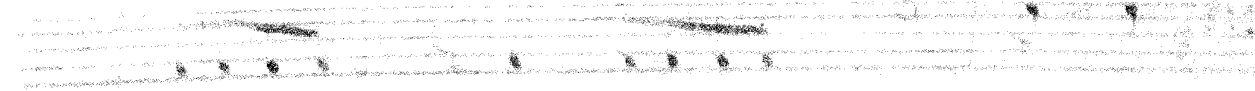
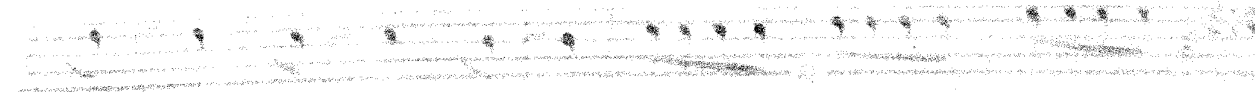
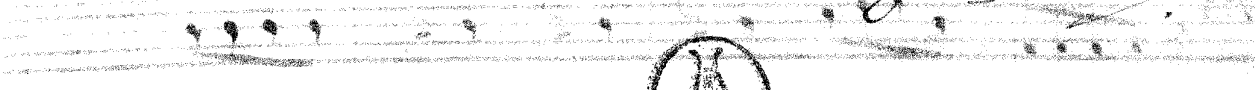
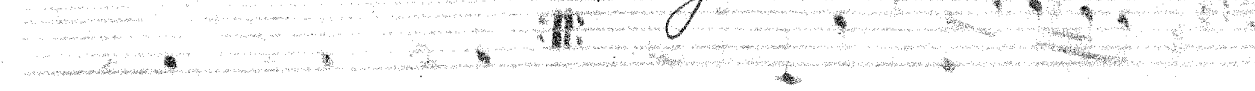


[Symfoni, D.]

Sinfonia

Basfo

of Alberto.

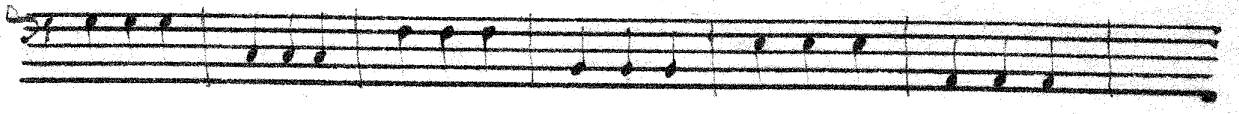
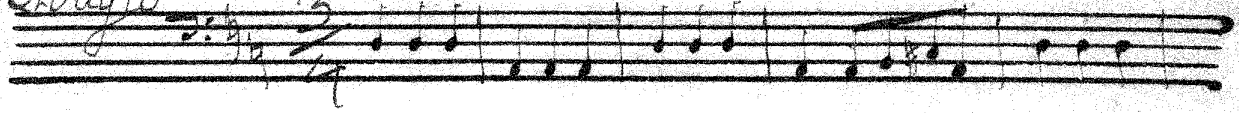


Allegro Sinfonia Basfo

A handwritten musical score for Bassoon, consisting of 12 staves of music. The score is written in a cursive style on aged paper. The first staff begins with the tempo marking 'Allegro' and the title 'Sinfonia Basfo'. The music is written in a key signature of one sharp (F#) and a 2/4 time signature. The notation includes various rhythmic values such as eighth and sixteenth notes, as well as rests and dynamic markings like 'f' (forte). There are several repeat signs (triple bar lines with dots) and a double bar line with repeat dots. The paper shows signs of age, including some staining and a small circular mark in the middle of the page.

Adagio

$\frac{9}{8}$

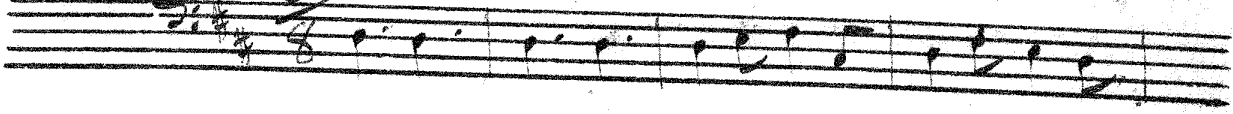


2

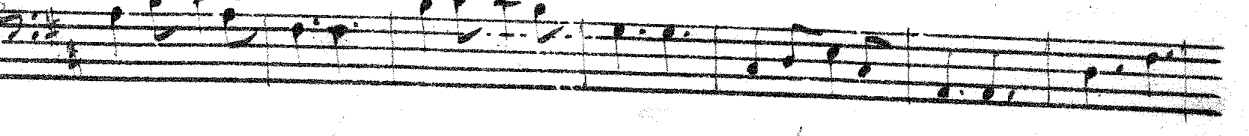
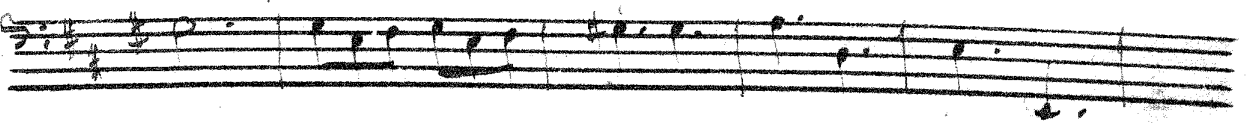
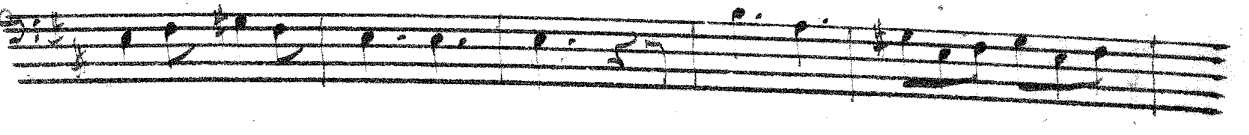
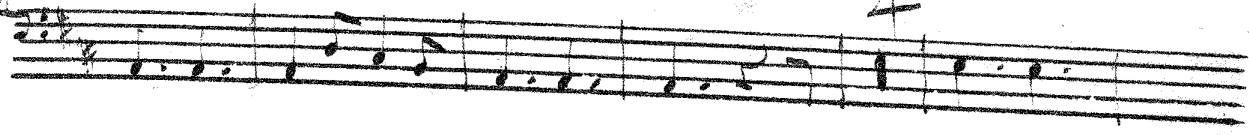


Presto

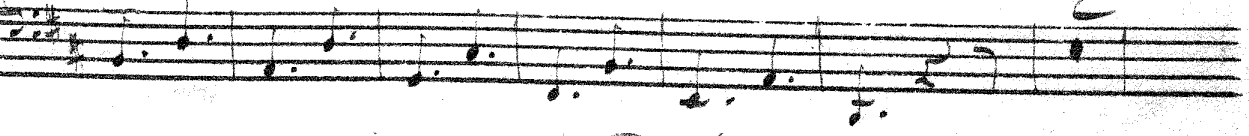
$\frac{6}{8}$

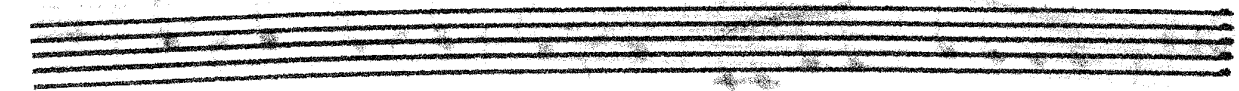
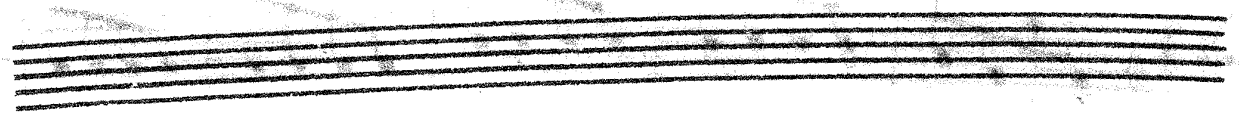
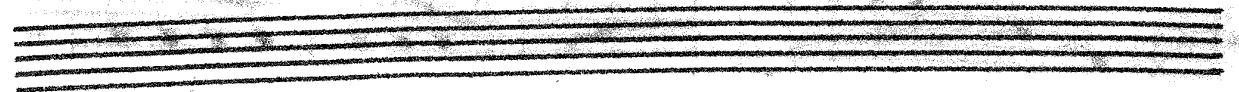
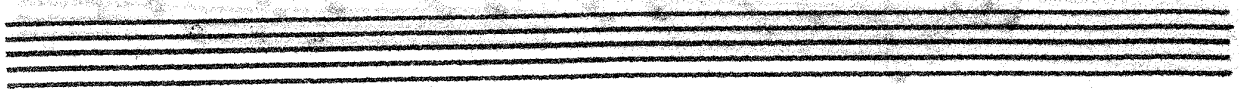


4



2

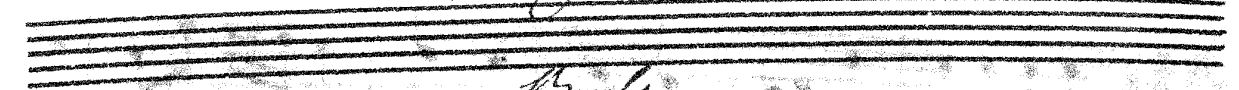




[Symfoni, D]



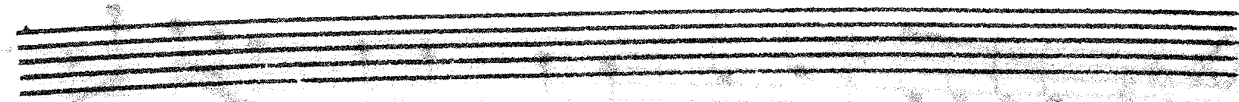
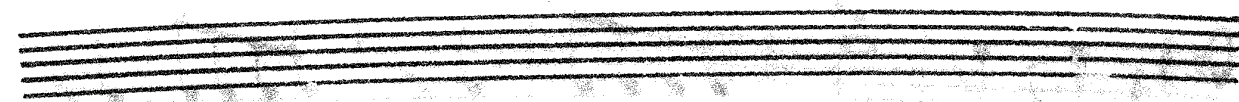
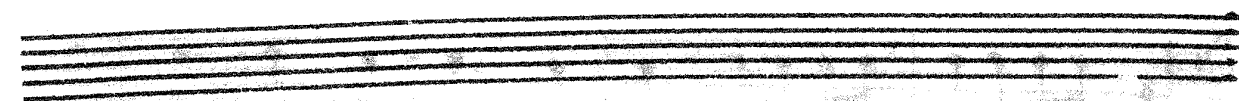
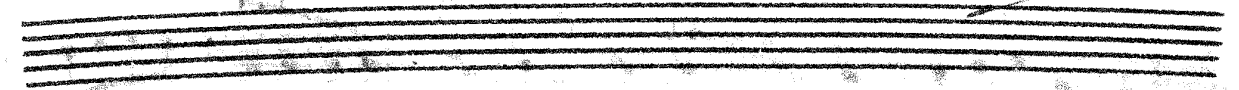
Sinfonia



Basso.



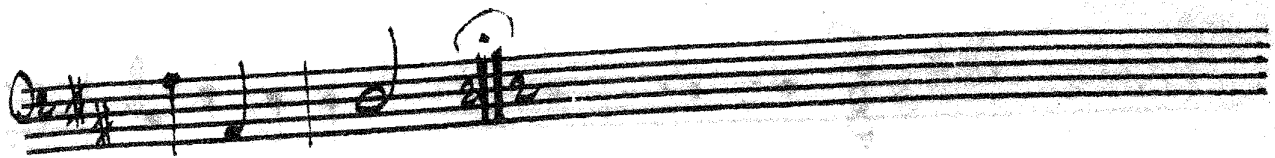
of Alberti.



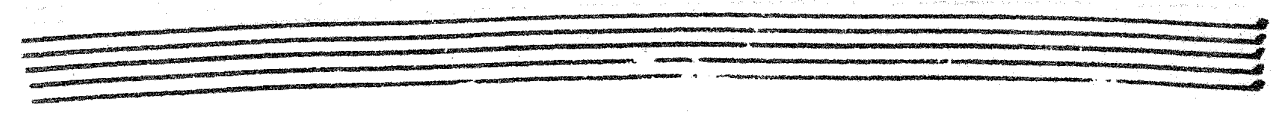
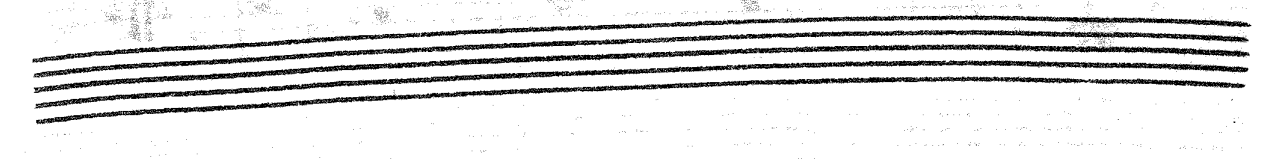
Sinfonia.

Basso.

Handwritten musical score for Bassoon, titled "Sinfonia." The score is written in G major (one sharp) and 2/4 time. It consists of 12 staves of music. The notation includes various rhythmic values such as quarter, eighth, and sixteenth notes, as well as rests and dynamic markings. A key signature change to D major (two sharps) is indicated in the 7th staff. The score concludes with a fermata and a final flourish.



Si Volta



Presto *Orchestra* G major $\frac{6}{8}$

Handwritten musical notation on a five-line staff.

Handwritten musical notation on a five-line staff, featuring a first ending bracket labeled "1." above the staff.

Handwritten musical notation on a five-line staff.

Handwritten musical notation on a five-line staff, ending with a double bar line and a repeat sign.

Handwritten musical notation on a five-line staff.

Handwritten musical notation on a five-line staff.

Handwritten musical notation on a five-line staff.

Handwritten musical notation on a five-line staff.

Handwritten musical notation on a five-line staff.

Handwritten musical notation on a five-line staff, featuring a second ending bracket labeled "2." above the staff.

Handwritten musical notation on a five-line staff.

Four empty musical staves at the bottom of the page.