

Francesco Bendusi

Opera nova de balli
à quattro

Edited by Allen Garvin

Altus
(alto clef)

Hawthorne Early Music
FB-1
20130704

©2013 — Allen Garvin
Some rights reserved

Hawthorne Early Music Publications, Dallas, TX

This work is licensed under the Creative Commons Attribution-ShareAlike 3.0 US License. To view a copy of this license, visit <http://creativecommons.org/licenses/by-sa/3.0/us> or send a letter to Creative Commons, 444 Castro Street, Suite 900, Mountain View, California, 94041, USA.

The typeface used is Liberation Serif, licensed under the GNU General Public License. This document was typeset using XeLaTeX and Lilypond.

10 09 08 07 06 05 04 03 02 01 19 18 17 16 15 14 13

Pass'e mezo ditto il romano

Musical score for 'Pass'e mezo ditto il romano' in 3/4 time. The score consists of three staves. The first staff begins with a treble clef, a bass clef, and a common time signature. The music is written in a style characteristic of the 16th-century Italian madrigal. Measure numbers 5, 10, and 15 are indicated above the staves. The piece concludes with a double bar line and a sharp sign on the final staff.

Moschetta

Musical score for 'Moschetta' in 3/4 time. The score consists of four staves. The first staff begins with a treble clef, a bass clef, and a common time signature. The music is written in a style characteristic of the 16th-century Italian madrigal. Measure numbers 5, 10, 15, and 20 are indicated above the staves. The piece concludes with a double bar line and a sharp sign on the final staff.

Desiderata

Musical score for 'Desiderata' in 3/4 time. The score consists of three staves. The first staff begins with a treble clef, a bass clef, and a common time signature. The music is written in a style characteristic of the 16th-century Italian madrigal. Measure numbers 5, 10, and 15 are indicated above the staves. The piece concludes with a double bar line and a sharp sign on the final staff.

Pietoso

Musical score for 'Pietoso' in bass clef, common time. The score consists of three staves. The first staff begins with a treble clef and a key signature of one sharp (F#). The melody is marked with measure numbers 5, 10, and 15. The second staff continues the melody from measure 10. The third staff continues from measure 15 and ends with a double bar line and a sharp sign on the final note.

Speranza

Musical score for 'Speranza' in bass clef, common time. The score consists of three staves. The first staff begins with a treble clef and a key signature of one sharp (F#). The melody is marked with measure numbers 5, 10, and 15. The second staff continues the melody from measure 10. The third staff continues from measure 15 and ends with a double bar line and a sharp sign on the final note.

La mala vecchie

Musical score for 'La mala vecchie' in bass clef, common time. The score consists of two staves. The first staff begins with a treble clef and a key signature of one sharp (F#). The melody is marked with measure numbers 5 and 10. The second staff continues the melody from measure 10 and ends with a double bar line.



Il stocco

Doi stanchi

La falilela

Musical score for 'La falilela' in bass clef, common time. The score consists of three staves. The first staff contains measures 1 through 5, with a measure rest of 5 measures indicated above the staff. The second staff contains measures 6 through 10, with a measure rest of 10 measures indicated above the staff. The third staff contains measures 11 through 15, with a measure rest of 15 measures indicated above the staff. A 6/2 time signature change is indicated above the staff at measure 14. The piece concludes with a double bar line and a sharp sign.

La bruna

Musical score for 'La bruna' in bass clef, common time. The score consists of three staves. The first staff contains measures 1 through 5, with a measure rest of 5 measures indicated above the staff. The second staff contains measures 6 through 10, with a measure rest of 10 measures indicated above the staff. The third staff contains measures 11 through 15, with a measure rest of 15 measures indicated above the staff. A 6/2 time signature change is indicated above the staff at measure 14. The piece concludes with a double bar line and a sharp sign.

E dove vastu o bon solda

Musical score for 'E dove vastu o bon solda' in bass clef, common time. The score consists of three staves. The first staff contains measures 1 through 5, with a measure rest of 5 measures indicated above the staff. The second staff contains measures 6 through 10, with a measure rest of 10 measures indicated above the staff. The third staff contains measures 11 through 15, with a measure rest of 15 measures indicated above the staff. A 6/2 time signature change is indicated above the staff at measure 14. The piece concludes with a double bar line and a sharp sign.

Chi non ha martello

Musical score for 'Chi non ha martello' in bass clef, common time. The score consists of one staff containing measures 1 through 5, with a measure rest of 5 measures indicated above the staff. The piece concludes with a double bar line and a sharp sign.

Musical score for the first section of "Opera nova de balli (altus)". The score is written in bass clef with a key signature of one flat (B-flat) and a common time signature (C). It consists of three staves of music. The first staff ends at measure 10. The second staff ends at measure 15. The third staff ends at measure 20, with a final sharp sign (#) indicating the end of the section.

Incognito

Musical score for the section "Incognito". The score is written in bass clef with a key signature of one flat (B-flat) and a common time signature (C). It consists of four staves of music. The first staff ends at measure 5. The second staff ends at measure 10. The third staff ends at measure 15. The fourth staff ends at measure 25, with a final sharp sign (#) indicating the end of the section.

Bella foresta

Musical score for the section "Bella foresta". The score is written in bass clef with a key signature of one flat (B-flat) and a common time signature (C). It consists of four staves of music. The first staff ends at measure 5. The second staff ends at measure 10. The third staff ends at measure 15. The fourth staff ends at measure 20, with a final sharp sign (#) indicating the end of the section.

Galante

Musical score for 'Galante' in 3/8 time. The score consists of three staves. The first staff begins with a treble clef, a key signature of one flat (B-flat), and a common time signature (C). The melody starts with a dotted quarter note, followed by eighth notes. A measure rest of 5 is indicated above the staff. The second staff continues the melody with a measure rest of 10. The third staff concludes the piece with a measure rest of 15 and a 6/2 time signature change.

Fusta

Musical score for 'Fusta' in 3/8 time. The score consists of three staves. The first staff begins with a treble clef, a key signature of one flat (B-flat), and a common time signature (C). The melody features a series of eighth notes and quarter notes, with a sharp sign (#) above a note. A measure rest of 5 is indicated above the staff. The second staff continues the melody with a measure rest of 10. The third staff concludes the piece with a measure rest of 15 and a 6/2 time signature change.

Animoso

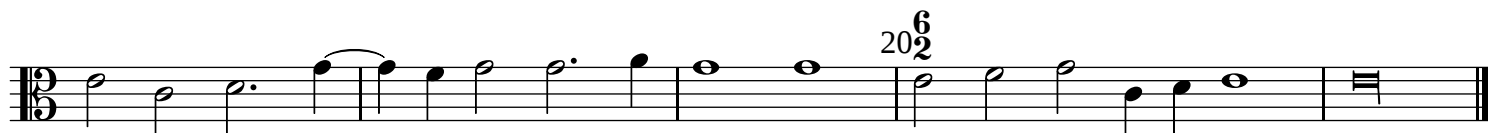
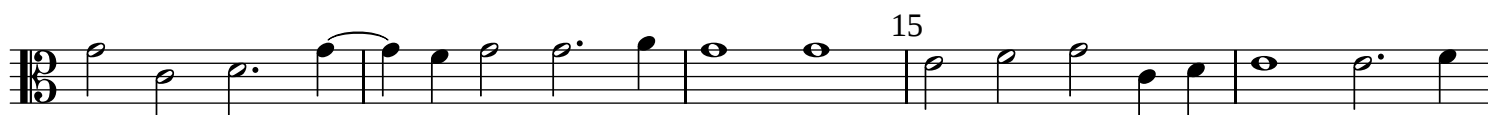
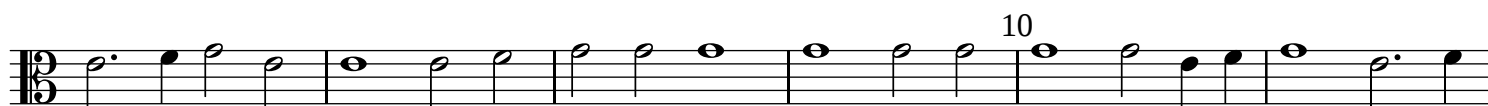
Musical score for 'Animoso' in 3/8 time. The score consists of three staves. The first staff begins with a treble clef, a key signature of one flat (B-flat), and a common time signature (C). The melody consists of eighth and quarter notes. A measure rest of 5 is indicated above the staff. The second staff continues the melody with a measure rest of 10. The third staff concludes the piece with a measure rest of 15.



Cortesa padoana



Bandera



Gioia



La giovenetta

Musical score for 'La giovenetta' in G minor, 3/8 time. The score consists of four staves. The first staff begins with a treble clef and a key signature of one flat. The melody is marked with measure numbers 5, 10, and 15. A sharp sign (#) appears above the staff at measure 10. The second staff continues the melody, with measure numbers 15 and 20. A sharp sign (#) appears above the staff at measure 15. The third staff continues the melody, with measure numbers 20 and 25. A sharp sign (#) appears above the staff at measure 20. The fourth staff concludes the piece with a double bar line.

Il ben ti vegna

Musical score for 'Il ben ti vegna' in G major, 3/8 time. The score consists of five staves. The first staff begins with a treble clef and a key signature of one sharp. The melody is marked with measure numbers 5, 10, and 15. A sharp sign (#) appears above the staff at measure 5. The second staff continues the melody, with measure numbers 15 and 20. A sharp sign (#) appears above the staff at measure 15. The third staff continues the melody, with measure numbers 20 and 25. A sharp sign (#) appears above the staff at measure 20. The fourth staff continues the melody, with measure numbers 25 and 30. A sharp sign (#) appears above the staff at measure 25. The fifth staff concludes the piece with a double bar line.

Pass'e mezo ditto il compasso

Musical score for 'Pass'e mezo ditto il compasso' in G major, 3/8 time. The score consists of two staves. The first staff begins with a treble clef and a key signature of one sharp. The melody is marked with measure numbers 5 and 10. A sharp sign (#) appears above the staff at measure 5. The second staff continues the melody, with measure numbers 10 and 15. A sharp sign (#) appears above the staff at measure 10. The piece concludes with a double bar line.

Musical staff for Altus. The staff is in bass clef with a key signature of one sharp (F#). The music consists of a sequence of notes: G2, A2, B2, C3, D3, E3, F3, G3, A3, B3, C4, D4, E4, F4, G4, A4, B4, C5. A sharp sign is placed above the first and fifth notes. A measure rest is indicated by the number 15 above the staff.

Violla

Musical staff for Viola. The staff is in bass clef with a key signature of one sharp (F#). The music consists of a sequence of notes: G2, A2, B2, C3, D3, E3, F3, G3, A3, B3, C4, D4, E4, F4, G4, A4, B4, C5. A sharp sign is placed above the first and fifth notes. A measure rest is indicated by the number 5 above the staff.

Musical staff for Bass. The staff is in bass clef with a key signature of one sharp (F#). The music consists of a sequence of notes: G2, A2, B2, C3, D3, E3, F3, G3, A3, B3, C4, D4, E4, F4, G4, A4, B4, C5. A sharp sign is placed above the first and fifth notes. Measure rests are indicated by the numbers 10 and 6 above the staff, with a '2' below the '6'.