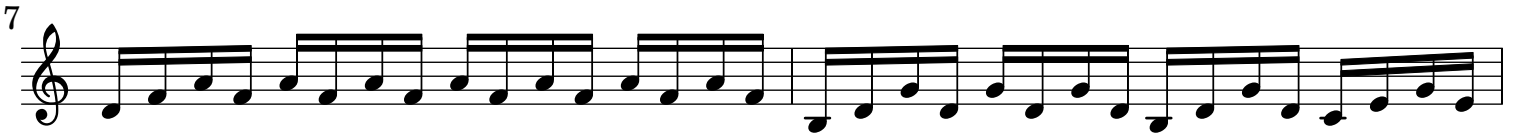


Quartetto Op. 18

Violino

J. C. Bach (1735-1782)

[1.] Allegro



Violino

25

28 *p.*

31 *tr*

34 *p.*

36 *cresc.*

38 *p.*

42

45

47 *p.*

49

53

57 *p.*

60 *f.* *p.* *f.*

64

68 *p.*

70

72

76

79

83

87 *p.*

91 *f.*

94 *f.*

97

101 *mf.* *p.* *f.*

Violino score for J.C. Bach's Quartetto Op. 1, measures 106-139. The score is written in treble clef and includes various musical notations such as trills, slurs, and dynamic markings.

Measures 106-109: Measure 106 begins with a trill (*tr*) on a dotted quarter note, followed by a quarter rest and a quarter note. Measure 107 contains a quarter rest, a quarter note, and a half note. Measure 108 features a quarter rest, a quarter note, and a half note. Measure 109 ends with a trill (*tr*) on a dotted quarter note, followed by a quarter rest and a quarter note. A dynamic marking of *p.* (piano) is placed below the final measure.

Measures 110-113: Measures 110-113 consist of continuous eighth-note patterns.

Measures 114-117: Measures 114-117 consist of continuous eighth-note patterns.

Measures 118-121: Measures 118-121 consist of continuous eighth-note patterns.

Measures 122-125: Measures 122-125 consist of continuous eighth-note patterns.

Measures 126-129: Measures 126-129 consist of continuous eighth-note patterns.

Measures 130-133: Measures 130-133 consist of continuous eighth-note patterns.

Measures 134-137: Measures 134-137 consist of continuous eighth-note patterns.

Measures 138-139: Measure 138 begins with a quarter rest, a quarter note, and a half note. Measure 139 begins with a quarter rest, a quarter note, and a half note. A dynamic marking of *p.* (piano) is placed below the first measure, and a dynamic marking of *f.* (forte) is placed below the second measure. The piece concludes with a double bar line and repeat dots.

[2.] Andantino

Musical score for Violino, page 5, measures 6-57. The score is in G minor (one flat) and 3/8 time. It features a variety of rhythmic patterns, including eighth and sixteenth notes, and rests. Dynamic markings include *f.* (forte) at measure 19 and *p.* (piano) at measure 31. Trills are indicated by *tr* above notes in measures 11, 48, and 52. The score concludes with a double bar line at measure 57.

[3.] Allegro



66



72



79



87



93



100



108



116



123



129



136



f.

f.

p.