

Mus

V : 107

Sonate à 3 Mains. in C.



MUS V : 107

*Allegro con gratia*

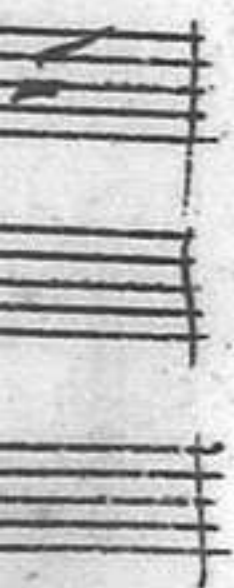
Handwritten musical score for a piece titled "Allegro con gratia". The score is written on four systems of staves. The first system is in treble clef with a common time signature. The second system is in bass clef. The third system is in treble clef. The fourth system is in bass clef and includes the lyrics "phi" and "no no no" written vertically below the notes. The music is written in a cursive, handwritten style with various note values, rests, and dynamic markings like "p".

Handwritten musical notation system 1, consisting of three staves. The top staff contains a series of vertical lines with dots, representing a chordal or figured bass part. The middle staff contains a melodic line with notes and stems. The bottom staff contains a bass line with notes and stems. The notation is in a historical style, possibly from the 17th or 18th century.

Handwritten musical notation system 2, consisting of three staves. The top staff contains a series of vertical lines with dots, representing a chordal or figured bass part. The middle staff contains a melodic line with notes and stems. The bottom staff contains a bass line with notes and stems. The notation is in a historical style, possibly from the 17th or 18th century.

Handwritten musical notation on a three-staff system. The top staff contains a series of chords, many with a sharp sign (#) and a flat sign (b). The middle staff features a melodic line with various note values and rests. The bottom staff contains a bass line with a complex rhythmic pattern and many beamed notes.

Handwritten musical notation on a second three-staff system. The top staff continues with chords, including some with a sharp sign (#) and a flat sign (b). The middle staff shows a melodic line with a prominent slur over a group of notes. The bottom staff contains a bass line with a complex rhythmic pattern and many beamed notes.



This image shows a page of handwritten musical notation, likely a score for a vocal and piano piece. The notation is arranged in three systems, each consisting of three staves. The top staff of each system appears to be a vocal line, while the bottom two staves are for piano accompaniment. The music is written in a historical style, possibly from the 18th or 19th century. The first system includes the word "for:" written above the vocal line. The second system includes the words "Lio Dio" and "Dio Dio" written below the vocal line. The third system includes the word "Di" written above the vocal line. The notation includes various musical symbols such as notes, rests, and dynamic markings like "for:" and "Lio Dio".



This block contains the main body of a handwritten musical score on a single page. The score is organized into two systems, each consisting of three staves. The notation is handwritten in dark ink on aged, slightly yellowed paper. The first system (top) features a variety of note values, including quarter, eighth, and sixteenth notes, as well as rests and beams. The second system (bottom) continues the composition with similar notation, including some notes with stems that extend downwards. The handwriting is clear but shows signs of being a working draft or a personal manuscript. There are some ink smudges and faint markings on the page, particularly in the lower right area.

*Larghetto.*

The first system of the handwritten musical score consists of three staves. The top staff contains a series of notes, many of which are beamed together in groups, suggesting a rapid or complex rhythmic pattern. The middle and bottom staves provide a harmonic accompaniment with more widely spaced notes. The notation is in a cursive, historical style.

The second system of the handwritten musical score also consists of three staves. It features dynamic markings such as *p.* (piano) and *fz.* (forzando). The top staff continues with complex rhythmic patterns, while the middle and bottom staves show a more melodic and harmonic progression. The notation remains consistent with the first system.






Handwritten musical score system 1, consisting of three staves. The top staff features a treble clef, a key signature of one sharp (F#), and a dynamic marking of *for.* (forte). The middle staff begins with a bass clef and a key signature of one sharp. The bottom staff starts with a bass clef and a key signature of one sharp. The music is characterized by dense, rapid sixteenth-note passages, often grouped in beams, with various slurs and accents. The notation is dense and somewhat crowded, typical of a working draft or a composer's sketch.



Handwritten musical score system 2, consisting of three staves. The top staff features a treble clef and a dynamic marking of *for.* (forte). The middle staff begins with a bass clef and a key signature of one sharp. The bottom staff starts with a bass clef and a key signature of one sharp. The music continues with dense, rapid sixteenth-note passages, often grouped in beams, with various slurs and accents. The notation is dense and somewhat crowded, typical of a working draft or a composer's sketch.

A system of three staves of handwritten musical notation. The top staff features a treble clef and contains several measures of music with complex, multi-note chords and some melodic lines. The middle staff has a treble clef and shows a more active melodic line with various note values and rests. The bottom staff has a bass clef and provides a harmonic foundation with chords and a steady rhythmic pattern. The notation is dense and characteristic of 18th or 19th-century manuscript notation.

A second system of three staves of handwritten musical notation. The top staff continues with complex chordal textures and melodic fragments. The middle staff shows a melodic line with some slurs and dynamic markings. The bottom staff maintains a consistent harmonic and rhythmic accompaniment. The overall style is consistent with the first system, showing a high level of technical detail in the manuscript.



Handwritten musical score system 1, consisting of three staves. The top staff features a treble clef and contains dense, multi-measure chords. The middle staff has a soprano clef and contains a melodic line with various note values and rests. The bottom staff has an alto clef and contains a bass line with notes and rests. The system is enclosed in a large rectangular box.



Handwritten musical score system 2, consisting of three staves. The top staff features a treble clef and contains dense, multi-measure chords. The middle staff has a soprano clef and contains a melodic line with various note values and rests. The bottom staff has an alto clef and contains a bass line with notes and rests. The system is enclosed in a large rectangular box. A dynamic marking *for.* is visible in the middle staff.



Handwritten musical score system 1, consisting of three staves. The top staff features a treble clef and a key signature of one sharp (F#). It begins with a dynamic marking of *p:* and contains several measures of music with slurs and accents. The middle staff starts with a *for:* marking and includes dynamic markings of *p:* and *f.p.*. The bottom staff begins with a bass clef and contains a series of notes, some with slurs. The system concludes with a double bar line.



Handwritten musical score system 2, consisting of three staves. The top staff features a treble clef and a key signature of one sharp (F#). It begins with a dynamic marking of *p:* and contains several measures of music with slurs and accents. The middle staff starts with a *for:* marking and includes dynamic markings of *p:* and *f.p.*. The bottom staff begins with a bass clef and contains a series of notes, some with slurs. The system concludes with a double bar line.

A system of three staves of handwritten musical notation. The top staff features a complex melodic line with many beamed notes and rests. The middle staff contains a more rhythmic accompaniment with fewer notes. The bottom staff provides a harmonic foundation with simple chordal structures. The notation is dense and characteristic of 18th-century manuscript style.

A second system of three staves of handwritten musical notation. The top staff begins with a series of beamed notes, followed by a few longer notes. The middle and bottom staves continue the accompaniment from the first system, showing some changes in the harmonic structure. The notation is consistent with the first system.


*Allegro.*

The first system of the handwritten musical score consists of three staves. The top staff is in treble clef and contains a series of chords, many of which are beamed together. The middle staff is in alto clef and features a melodic line with eighth and sixteenth notes, some beamed together. The bottom staff is in bass clef and provides a rhythmic accompaniment with eighth and sixteenth notes. The music is marked 'Allegro' and shows signs of being a working draft, with some ink bleed-through and corrections.

The second system of the handwritten musical score also consists of three staves. The top staff is in treble clef and continues the chordal texture from the first system. The middle staff is in alto clef and continues the melodic line. The bottom staff is in bass clef and continues the rhythmic accompaniment. The notation is consistent with the first system, showing a continuation of the musical ideas. The paper shows some staining and ink bleed-through, particularly from the reverse side.



Handwritten musical score system 1, consisting of three staves. The top staff features a treble clef and a key signature of one sharp (F#). It begins with a half note G4, followed by a quarter note A4, and then a series of sixteenth notes. Dynamic markings *pp:* and *for:* are present. The middle and bottom staves contain piano accompaniment with chords and moving lines.



Handwritten musical score system 2, consisting of three staves. The top staff continues the melodic line from the first system, featuring a treble clef and a key signature of one sharp. It includes dynamic markings *for:* and *pp:*. The middle and bottom staves continue the piano accompaniment.

A system of three staves of handwritten musical notation. The top staff begins with a treble clef and contains several measures of music with notes and rests. The middle staff contains a dense sequence of notes, possibly representing a melodic line or a complex texture. The bottom staff begins with a bass clef and contains notes and rests. The notation is fluid and characteristic of a working draft.

A second system of three staves of handwritten musical notation. The top staff starts with a treble clef and features notes with stems and beams. The middle staff contains a melodic line with various note values and rests. The bottom staff begins with a bass clef and contains notes and rests. The handwriting is consistent with the first system, showing a continuous piece of music.





Handwritten musical notation system 1, consisting of three staves. The top staff features a treble clef and contains a series of chords, many of which are beamed together. The middle staff has a bass clef and contains single notes and dyads. The bottom staff has a bass clef and contains whole notes. The notation is dense and appears to be a complex harmonic exercise or a specific piece of music.



Handwritten musical notation system 2, consisting of three staves. The top staff features a treble clef and contains a series of chords, many of which are beamed together. The middle staff has a bass clef and contains single notes and dyads. The bottom staff has a bass clef and contains whole notes. The notation is dense and appears to be a complex harmonic exercise or a specific piece of music.

A system of three staves of handwritten musical notation. The top staff begins with a treble clef and a key signature of one flat (B-flat). The notation includes various note values, rests, and slurs. The middle and bottom staves appear to be accompaniment parts, with the bottom staff starting with a bass clef. The handwriting is in dark ink on aged paper.

A second system of three staves of handwritten musical notation. The top staff features a treble clef and a key signature of one flat. This system is characterized by dense, rapid passages of notes, particularly in the upper register of the top staff. The middle and bottom staves provide harmonic support with various rhythmic patterns. The notation is consistent with the first system, showing a continuation of the musical piece.

Handwritten musical notation on three staves. The top staff begins with a treble clef and a key signature of one flat (B-flat). The middle and bottom staves begin with a bass clef and a key signature of one flat (B-flat). The notation includes various note values, rests, and phrasing slurs. The music is written in a cursive, historical style.

Handwritten musical notation on two staves. The notation includes a few notes and rests, followed by a large section of empty staves. The word "Volti:" is written in the center of the page between the two staves, indicating a repeat or a section to be played multiple times.

Handwritten musical score system 1, consisting of three staves. The top staff features a treble clef and contains a melodic line with a series of sixteenth-note runs. The middle and bottom staves contain accompaniment with various rhythmic patterns. Dynamic markings *p:* and *fr:* are present. The system concludes with a fermata over the final note of the top staff.

Handwritten musical score system 2, consisting of three staves. The top staff features a treble clef and contains a melodic line with a series of sixteenth-note runs. The middle and bottom staves contain accompaniment with various rhythmic patterns. Dynamic markings *p:*, *fr:*, and *for:* are present. The system concludes with a fermata over the final note of the top staff.

Partial view of a handwritten musical score system on the right page, showing the beginning of a staff with a treble clef.

Partial view of a handwritten musical score system on the right page, showing the beginning of a staff with a treble clef.

A handwritten musical score consisting of three staves. The top staff features a treble clef and contains several measures of music with notes and rests. The middle staff features a bass clef and contains several measures of music with notes and rests. The bottom staff features a bass clef and contains several measures of music with notes and rests. The word "Fine" is written in cursive at the end of the bottom staff.

A set of empty musical staves, consisting of two systems of five lines each, positioned below the first system of music.