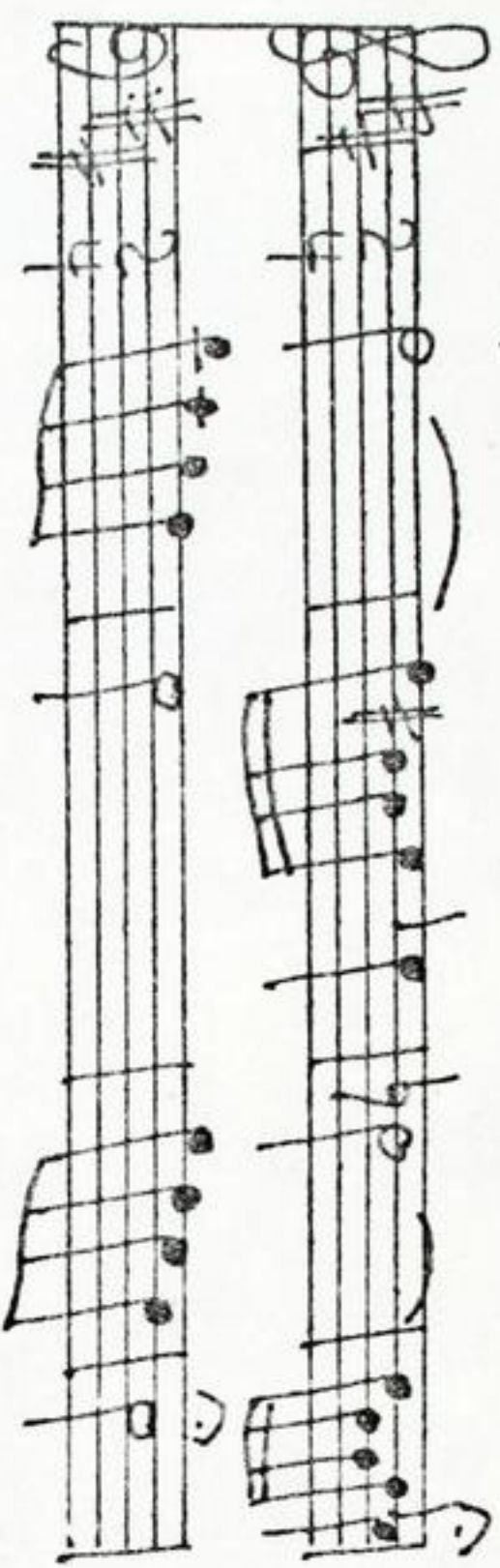


Graupner, Christoph (1683-1760)

BRD DS Mus.ms 470/12

Sinfonia/a/2 Clarin/2 Corn:/Tympan/2 Violin/Viola/e/Cemba-
lo./[Incipit]/Christoph Graupner. (D-dur)



Adagio/Allegro 2/4 D-dur
- Air en Menuet 3 D-dur
- Air. Allegro 3 D-dur -
Menuet 3 d-moll - Bourée
C D-dur.

Autograph ca.1746/47. 36 x 23 cm.

partitur: 6 Bl.

1o St.:vl 1,2,vla,vlc,vlne,cor 1,2,clar 1,2,timp.

Streicher je 2,Bläser, timp je 1 Bl.

Alte Sign.: Mus 3074/12.

Nagel Nr.103.

105. ⁴⁴⁷ *Novis 30/4/12* *April 11.*
(Vogel 103)

1.
Moz. 1746 - Sept 47

Sinfonia

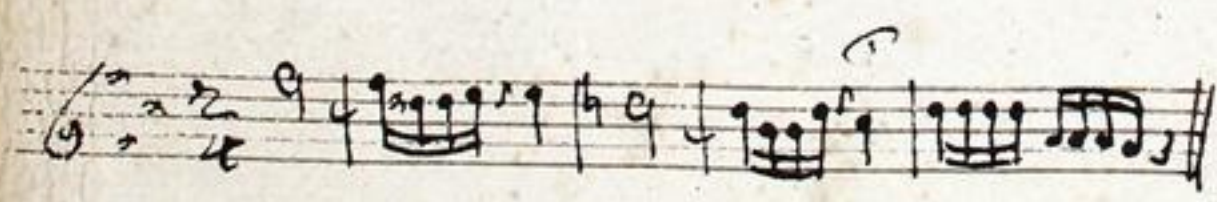
a

- 2 Clarin
- 2 Corn:
- Tympan
- 2 Violin
- Viola

e

Foll (23)

Cembalo.



Christoph Graupner.

Handwritten musical score for a symphony, featuring multiple staves with musical notation, clefs, and dynamic markings. The score includes various instruments such as Clarinet, Trombone, Violin, Viola, and Cembalo. The notation is dense and characteristic of 18th-century manuscript notation.

Dynamic markings include *ad. viv.*, *piano*, *Adagio*, *Alto*, and *p.*

The score is written on aged, yellowed paper with multiple staves per system. The notation includes notes, rests, and complex rhythmic patterns. The page number '17' is visible in the top right corner.

Handwritten musical score on aged paper, featuring multiple staves of music. The notation includes various rhythmic values, clefs, and dynamic markings such as *p* (piano) and *f* (forte). The score is organized into systems, with some systems containing multiple staves. The handwriting is in a historical style, and the paper shows signs of age and wear.

Handwritten musical score on aged paper, featuring multiple staves of music. The notation includes various rhythmic values (e.g., minims, crotchets, quavers) and rests, typical of 17th or 18th-century manuscript notation. The score is organized into systems, with some systems containing multiple staves. The paper shows signs of age, including discoloration and some wear at the edges.

Handwritten musical score, first system. It consists of ten staves of music. The notation includes various note values, rests, and bar lines. A red stamp is visible on the right side of the page, partially overlapping the staves.

Landesbibliothek
Hessische
Landesbibliothek

Handwritten musical score, second system. It consists of ten staves of music. The notation includes various note values, rests, and bar lines. The word "Allegretto" is written in cursive below the sixth staff.

Handwritten musical score, third system. It consists of ten staves of music. The notation includes various note values, rests, and bar lines. The word "Allegretto" is written in cursive below the sixth staff.

Handwritten musical score on a single page, featuring ten staves. The notation includes various rhythmic values such as eighth and sixteenth notes, rests, and dynamic markings like 'p' (piano). The manuscript shows signs of age, with some ink bleed-through and slight discoloration.

Handwritten musical score on a single page, featuring ten staves. The notation includes various rhythmic values such as eighth and sixteenth notes, rests, and dynamic markings like 'p' (piano). The manuscript shows signs of age, with some ink bleed-through and slight discoloration.

Handwritten musical score on a single page, featuring ten staves. The notation includes various rhythmic values such as eighth and sixteenth notes, rests, and dynamic markings like 'p' (piano). The manuscript shows signs of age, with some ink bleed-through and slight discoloration.

Handwritten musical score on ten staves. The notation includes various note values, rests, and bar lines. The first staff begins with a treble clef and a key signature of one sharp (F#). The music consists of several measures of music, with some measures containing multiple notes beamed together.

Handwritten musical score on ten staves. The notation includes various note values, rests, and bar lines. The first staff begins with a treble clef and a key signature of one sharp (F#). The music consists of several measures of music, with some measures containing multiple notes beamed together. The word "Air. allegro." is written in cursive at the beginning of the eighth staff.

Handwritten musical score on ten staves. The notation includes various note values, rests, and bar lines. The first staff begins with a treble clef and a key signature of one sharp (F#). The music consists of several measures of music, with some measures containing multiple notes beamed together.

Handwritten musical score on the first system, consisting of seven staves. The notation includes various rhythmic values, clefs, and bar lines. The music appears to be a multi-measure rest followed by a series of rhythmic patterns.

Handwritten musical score on the second system, consisting of seven staves. This system continues the musical piece with more complex rhythmic structures and some dynamic markings.

Handwritten musical score on the third system, consisting of seven staves. The notation includes some large, decorative flourishes and a final cadence-like structure.

Handwritten musical score on a single page, consisting of ten staves. The notation is in a historical style, likely from the 18th or 19th century. The first five staves contain mostly whole and half notes, with some rests. The sixth staff begins a more complex section with many sixteenth and thirty-second notes, including some beamed patterns. The seventh and eighth staves continue this complex texture. The ninth and tenth staves return to a simpler notation with mostly quarter and eighth notes.

Handwritten musical score on a single page, consisting of ten staves. The notation is in a historical style. The first five staves contain mostly whole and half notes. The sixth staff begins a more complex section with many sixteenth and thirty-second notes, including some beamed patterns. The seventh and eighth staves continue this complex texture. The ninth and tenth staves return to a simpler notation with mostly quarter and eighth notes.

Handwritten musical score on a single page, consisting of ten staves. The notation is in a historical style. The first five staves contain mostly whole and half notes. The sixth staff begins a more complex section with many sixteenth and thirty-second notes, including some beamed patterns. The seventh and eighth staves continue this complex texture. The ninth and tenth staves return to a simpler notation with mostly quarter and eighth notes.

Grüßherzoglich
Hessische
Bibliothek

Handwritten musical score for the first system, consisting of 11 staves. The notation includes various rhythmic values, accidentals, and dynamic markings such as *p.* (piano). The music is written in a historical style with a treble clef and a 3/4 time signature. The word *Menuet.* is written in cursive at the bottom of the system.

Handwritten musical score for the second system, consisting of 11 staves. This system continues the musical piece with similar notation and dynamic markings. The word *Menuet.* is also present at the bottom of this system.

Handwritten musical score for the third system, consisting of 11 staves. The notation continues, showing various rhythmic patterns and accidentals. The word *Menuet.* is written at the bottom of this system.

Handwritten musical score for a piece titled "Bourée". The score consists of ten staves of music, featuring various rhythmic patterns and melodic lines. The notation includes notes, rests, and bar lines, typical of 17th or 18th-century manuscript notation. The word "Bourée" is written in a cursive hand at the beginning of the eighth staff.

Continuation of the handwritten musical score, consisting of ten staves. The notation continues with similar rhythmic and melodic structures as the previous section, showing a variety of note values and rests.

Final section of the handwritten musical score on this page, consisting of ten staves. The notation concludes with various rhythmic and melodic patterns, ending with a final cadence.

Handwritten musical score on aged paper, featuring multiple staves with musical notation, clefs, and dynamic markings such as *p.* (piano). The notation includes various note values, rests, and bar lines, typical of an 18th or 19th-century manuscript. The score is organized into systems, with some staves containing more complex rhythmic patterns and others appearing more sparse. The ink is dark, and the paper shows signs of age and wear.

Sinfonia

Violino 1.

pian.
adagio *allegro*

f
p. *pp.* *p.* *p.* *p.* *p.* *p.* *p.* *p.* *p.* *p.* *p.* *p.* *f*

Str
 en
 Menuet.

Air en Menuet

Musical notation for the first piece, consisting of seven staves of music. The notation includes various note values, rests, and dynamic markings such as 'p'.

Air *allegro.*

Musical notation for the second piece, consisting of six staves of music. The notation features a more rhythmic and energetic style with many sixteenth notes.

Handwritten musical score on ten staves. The notation includes various rhythmic values, accidentals, and dynamic markings such as *p.* and *piaw.* The word *Menuet* is written in cursive on the sixth staff. The manuscript shows signs of age, including some staining and a small tear at the top right corner.

Bourée



Bourée

Handwritten musical score for a piece titled "Bourée". The score is written on eight staves. The first staff begins with the title "Bourée" in a cursive hand. The music is in G major (one sharp) and 3/4 time. The notation includes various rhythmic values, accidentals, and dynamic markings such as "p." (piano) and "f." (forte). The piece concludes with a double bar line and a repeat sign.

Sinfonia.

Violino 2.

Handwritten musical score for Violino 2, page 9. The score is written on 14 staves. It begins with a treble clef, a key signature of one sharp (F#), and a 4/4 time signature. The tempo markings are *Adagio* and *Allegro*. The score features a variety of rhythmic patterns, including sixteenth and thirty-second notes, and rests. Dynamic markings such as *p.* (piano) and *f.* (forte) are present. The piece concludes with a double bar line and a fermata. The signature "Christen Schmitt" is written in the bottom right corner of the page.

Air
en
Ménuet

Air

Allegro.

Handwritten musical notation on five staves. The notation includes various note values (quarter, eighth, sixteenth notes), rests, and dynamic markings such as 'p.' (piano) and 't' (tutti). The music is written in a single system across the staves.

Menuet

Handwritten musical notation for the beginning of a Minuet. It starts with a treble clef and a key signature of one sharp (F#). The notation includes a common time signature and several measures of music.

Handwritten musical notation on three staves, continuing the Minuet piece. The notation includes various note values, rests, and dynamic markings like 'p.' and 't'. The music is written in a single system across the staves.

Four empty musical staves at the bottom of the page, indicating the end of the written music on this page.

Bourree ^{بوريه}

Handwritten musical score for Bourree, consisting of ten staves of music. The notation includes various note values, rests, and dynamic markings such as 'p.' and 'f.'. The piece is written in G major and 3/4 time. The first staff begins with the title 'Bourree' and a small Arabic word 'بوريه' above it. The music features a mix of eighth and sixteenth notes, with some triplet-like patterns. The piece concludes with a double bar line and a decorative flourish.

Sinfonia.

Viola

Handwritten musical score for Viola, starting with the tempo marking *adagio*. The score consists of 14 staves of music, featuring complex rhythmic patterns and dynamic markings such as *p* (piano) and *f* (forte). The notation includes various note values, rests, and articulation marks.

Stri
en
Chenuef.



Air
en
Muet

5.

Handwritten musical score for 'Air en Muet'. The piece is in 3/4 time, marked with a '5.' above the first staff. The notation is in a single system with a treble clef and a key signature of one sharp (F#). The music features a variety of rhythmic patterns, including eighth and sixteenth notes, and rests. A dynamic marking 'p.' is visible at the end of the fourth staff. The score concludes with a double bar line and a '5.' above the final measure.

Air

3.
allegro

Handwritten musical score for 'Air allegro'. The piece is in 3/4 time, marked with a '3.' above the first staff and 'allegro' below it. The notation is in a single system with a treble clef and a key signature of one sharp (F#). The music is characterized by a fast tempo and features a variety of rhythmic patterns, including eighth and sixteenth notes, and rests. A dynamic marking 'p.' is visible at the end of the sixth staff. The score concludes with a double bar line and a 'C' below the final measure.

Handwritten musical notation on three staves. The first staff begins with a treble clef, a key signature of one sharp (F#), and a common time signature (C). The music consists of a series of rhythmic patterns, primarily quarter and eighth notes, with some rests and dynamic markings.

Menuet
 Handwritten musical notation on three staves. The first staff is titled "Menuet" in a cursive hand. It begins with a treble clef, a key signature of one sharp (F#), and a common time signature (C). The notation includes various note values and rests, with a dynamic marking of "p." (piano) appearing on the second staff.

Bourée
 Handwritten musical notation on seven staves. The first staff is titled "Bourée" in a cursive hand. It begins with a treble clef, a key signature of one sharp (F#), and a common time signature (C). The notation is characterized by dense rhythmic patterns, including many sixteenth and thirty-second notes. Dynamic markings of "p." (piano) are present on several staves.

Air
en
Menuet

Handwritten musical score for the first piece, consisting of seven staves. The notation includes treble clefs, a key signature of one sharp (F#), and a 3/4 time signature. The music features a variety of note values, including eighth and sixteenth notes, and rests. A fermata is present over a note in the fourth staff. The piece concludes with a double bar line and a repeat sign.

Air

Handwritten musical score for the second piece, consisting of ten staves. The notation includes treble clefs, a key signature of one sharp (F#), and a 3/4 time signature. The tempo marking "allegro." is written below the first staff. The music is characterized by frequent sixteenth-note passages and a dynamic marking of "p." (piano) in the seventh staff. The piece ends with a double bar line and a repeat sign.

Musical staff with notes and clef.

Musical staff with notes and clef. Title: *Meneret*

Musical staff with notes and clef.

Musical staff with notes and clef. Includes dynamic marking *p.*

Musical staff with notes and clef. Includes dynamic marking *p.*

Musical staff with notes and clef. Title: *Bouree*

Musical staff with notes and clef.

Musical staff with notes and clef.

Musical staff with notes and clef. Includes dynamic marking *p.*

Musical staff with notes and clef. Includes dynamic marking *p.*

Musical staff with notes and clef. Includes dynamic marking *p.*

Musical staff with notes and clef. Ends with a double bar line and a decorative flourish.

Empty musical staff.

Empty musical staff.

Empty musical staff.

Air
en Menuet 5.

Handwritten musical score for 'Air en Menuet' in 3/4 time, marked '5.'. The score consists of eight staves of music. The first staff begins with a treble clef, a key signature of one sharp (F#), and a 3/4 time signature. The music is written in a cursive hand with various note values, rests, and ornaments. A dynamic marking 'p.' is visible on the fifth staff. The piece concludes with a double bar line and repeat signs.

Air
Moyw

Handwritten musical score for 'Air Moyw' in 3/4 time. The score consists of eight staves of music. The first staff begins with a treble clef, a key signature of one sharp (F#), and a 3/4 time signature. The music is written in a cursive hand with various note values, rests, and ornaments. A dynamic marking 'p.' is visible on the seventh staff. The piece concludes with a double bar line and repeat signs.

Musical notation on a single staff, featuring a treble clef, a key signature of one sharp (F#), and a common time signature (C). The notation includes various rhythmic values such as eighth and sixteenth notes, along with rests.

Musical notation on a single staff, continuing the piece with similar rhythmic patterns and ending with a double bar line and repeat dots.

Menuet Musical notation on a single staff, starting with a treble clef, a key signature of one flat (Bb), and a 3/4 time signature. The word "Menuet" is written in cursive above the staff.

Musical notation on a single staff, continuing the Minuet with a treble clef and a key signature of one flat.

Musical notation on a single staff, featuring a treble clef, a key signature of one flat, and a common time signature. It includes dynamic markings such as *p.* (piano).

Musical notation on a single staff, continuing the piece with a treble clef and a key signature of one flat.

Bouree Musical notation on a single staff, starting with a treble clef, a key signature of one sharp, and a common time signature. The word "Bouree" is written in cursive above the staff.

Musical notation on a single staff, continuing the Bourree with a treble clef and a key signature of one sharp.

Musical notation on a single staff, continuing the Bourree with a treble clef and a key signature of one sharp.

Musical notation on a single staff, continuing the Bourree with a treble clef and a key signature of one sharp. It includes dynamic markings such as *p.* (piano).

Musical notation on a single staff, continuing the Bourree with a treble clef and a key signature of one sharp. It includes dynamic markings such as *f.* (forte) and *p.* (piano).

Musical notation on a single staff, continuing the Bourree with a treble clef and a key signature of one sharp. It includes dynamic markings such as *f.* (forte) and *p.* (piano).

Musical notation on a single staff, continuing the Bourree with a treble clef and a key signature of one sharp. It includes dynamic markings such as *f.* (forte) and *p.* (piano), and ends with a double bar line and a decorative flourish.

Sinfonia

Corino 1.

Handwritten musical score for the first section of the Sinfonia. It consists of six staves of music. The first staff begins with the tempo marking *adagio: allu.* and a treble clef. The music features various rhythmic patterns, including sixteenth-note runs and rests. Dynamic markings such as *p.* and *f.* are present. The section concludes with a double bar line and a fermata over the final note.

Handwritten musical score for the second section, labeled *Air en Chœur*. It consists of three staves. The first staff has a treble clef and a 3/4 time signature. The tempo is marked *allegro*. The music includes complex rhythmic figures and rests. The section ends with a double bar line and a fermata.

Handwritten musical score for the third section, labeled *Air*. It consists of five staves. The first staff has a treble clef and a 3/4 time signature. The tempo is marked *allegro*. The music features rhythmic patterns and rests. The section concludes with a double bar line and a fermata. The word *Chœur* is written at the bottom right of the page.

Menuet

Handwritten musical notation for the first piece, 'Menuet', consisting of two staves. The first staff begins with a treble clef and a 3/4 time signature. The notation includes various note values, rests, and repeat signs.

Bourée

Handwritten musical notation for the second piece, 'Bourée', consisting of eight staves. The notation is dense with notes and includes repeat signs and a double bar line with a fermata-like flourish at the end of the first staff.

Sinfonia.

Carino 2.

Handwritten musical notation for the first section of the Sinfonia. It consists of six staves of music. The first staff begins with a treble clef, a 2/4 time signature, and the tempo marking *ad. allu.* (ad libitum, alluvando). The notation includes various rhythmic values such as eighth and sixteenth notes, and rests. There are several first endings marked with a '1.' above the staff.

Handwritten musical notation for the second section, labeled *Menuet* (Minuet). It consists of two staves. The first staff has a treble clef and a 3/4 time signature. The tempo marking *Allegro* is written below the staff. The notation features a mix of eighth and sixteenth notes.

Handwritten musical notation for the third section, labeled *Allegro*. It consists of four staves. The first staff has a treble clef and a 3/4 time signature. The tempo marking *Allegro* is written below the staff. The notation is characterized by a dense texture of sixteenth and thirty-second notes.

Menuet ^{5.} $\frac{3}{4}$ 

Bourree ^{5.} $\frac{3}{4}$ 



Sinfonia.

Corno 1.

Handwritten musical score for the first horn part of a symphony. The music is written on seven staves in treble clef with a 2/4 time signature. The tempo is marked *ad. all.* (ad libitum, allargando). The notation includes various note values, rests, and dynamic markings such as *p.* (piano).

Air en Menuet

Handwritten musical score for the first horn part of a minuet. The music is written on three staves in treble clef with a 3/4 time signature. The tempo is marked *Allegro*. The notation includes various note values, rests, and dynamic markings such as *p.* (piano).

Air

Handwritten musical score for the first horn part of an air. The music is written on four staves in treble clef with a 3/4 time signature. The tempo is marked *Allegro*. The notation includes various note values, rests, and dynamic markings such as *p.* (piano).

Mennet ^{5.} $\text{C} \frac{3}{4}$

Bowie ^{5.} C

Sinfonia

Corno 2.

all.

And.
Menoet.

And.
allegro.

Menoet.

5.

Menuet

Handwritten musical notation for the first piece, 'Menuet'. It consists of three staves. The first staff begins with a treble clef and a 3/4 time signature. The music is written in a single system across three staves. There are various musical notations including notes, rests, and bar lines. A circled note is present in the second staff. The piece concludes with a double bar line and repeat dots.

Bourée

Handwritten musical notation for the second piece, 'Bourée'. It consists of seven staves. The first staff begins with a treble clef and a common time signature. The music is written in a single system across seven staves. There are various musical notations including notes, rests, and bar lines. A circled note is present in the fourth staff. The piece concludes with a double bar line and repeat dots.

Sinfonia G. A. H. S.

Tympani.

Handwritten musical score for Tympani, consisting of 14 staves. The notation includes various rhythmic patterns, rests, and dynamic markings such as *ad. allegro*, *f.*, *p.*, and *ff.*. The score is written in a single system with multiple staves. The first staff begins with a treble clef and a 2/4 time signature. The notation is dense with rhythmic figures, including eighth and sixteenth notes, and rests. There are several first and second endings marked with numbers 1 and 2. The score concludes with a double bar line and a fermata.

Allegro
en
Cherubini

Air $\text{C} \frac{3}{4}$ *مکنه*
allegro

Handwritten musical score for 'Air' in 3/4 time. The score consists of eight staves. It begins with a treble clef and a common time signature of 3/4. The tempo is marked 'allegro'. The music features a variety of rhythmic patterns, including eighth and sixteenth notes, and rests. There are several first and second endings marked with '1.' and '2.'. A dynamic marking 'p.' (piano) is present in the sixth staff. The piece concludes with a double bar line and a repeat sign.

Meneret $\text{C} \frac{3}{4}$ *مکنه*

Handwritten musical score for 'Meneret' in 3/4 time. The score consists of three staves. It begins with a treble clef and a common time signature of 3/4. The tempo is marked 'allegro'. The music features a variety of rhythmic patterns, including eighth and sixteenth notes, and rests. There are several first and second endings marked with '1.' and '2.'. A dynamic marking 'p.' (piano) is present in the second staff. The piece concludes with a double bar line and a repeat sign.

Bourée C *مکنه*

Handwritten musical score for 'Bourée' in common time. The score consists of five staves. It begins with a treble clef and a common time signature of C. The tempo is marked 'allegro'. The music features a variety of rhythmic patterns, including eighth and sixteenth notes, and rests. There are several first and second endings marked with '1.' and '2.'. A dynamic marking 'f' (forte) is present in the first staff, and 'p.' (piano) is present in the fourth and fifth staves. The piece concludes with a double bar line and a repeat sign.