

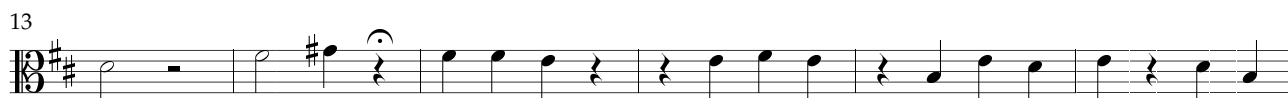
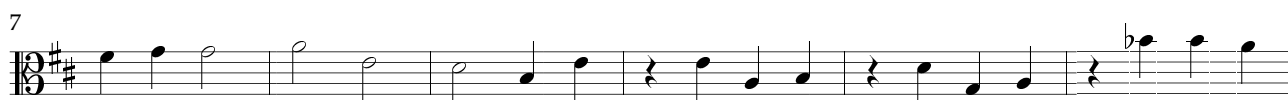
Viola

Sinfonia

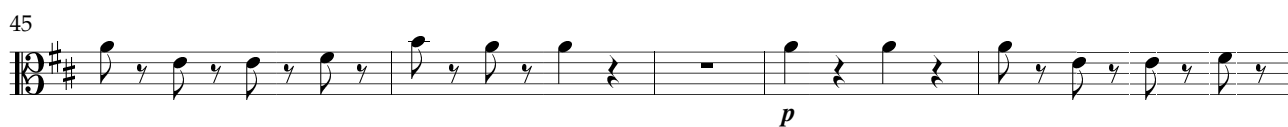
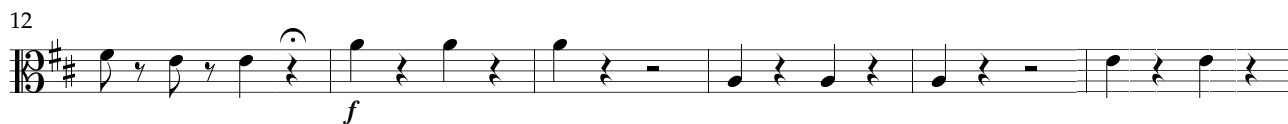
Dall'oratorio *Il Giosuè* (1688)

Giovanni Bononcini (1670–1747)

Grave



Presto



Adagio

A musical staff in bass clef with a key signature of one sharp (F#). The notation consists of three measures. The first measure contains a quarter note G2, a quarter rest, a quarter note G2, a quarter rest, and a quarter note A2. The second measure contains a half note G2 and a half note F#2. The third measure contains a whole note G2. The piece concludes with a double bar line.