

MISSAE
ANTONII BRUMEL



B.

Sa. 78. C. 10.

R/XVI Petrucci/27

RISM

1+16+1 BR.

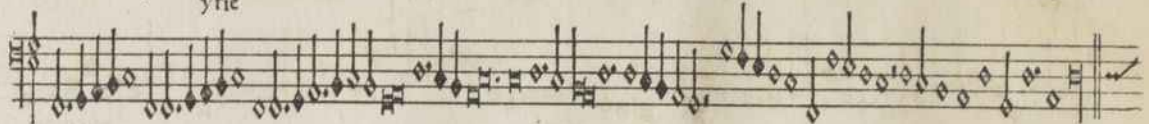
3.2.1966.



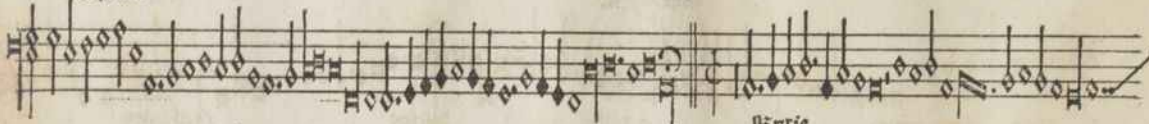




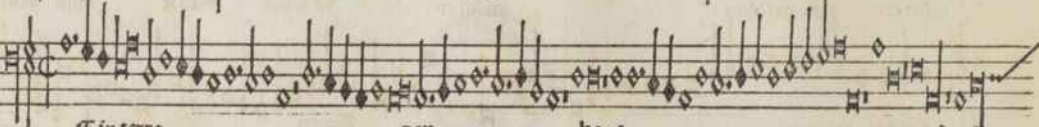
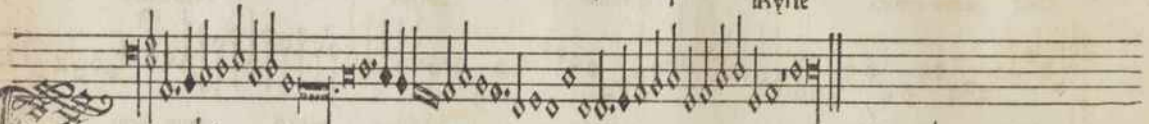
yrrie



Chriſte



ſſyrrie



Et in terra

paſ

bonc

laud



mus glorificamus

dñe deus

dñe fili Jesu xpe

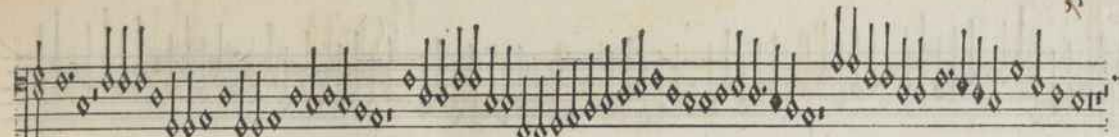
Dñe deus agnus q tollis suscipe qui sedes

miserere qm tu solus tu solus tu solus altissi mus Jesu xpe

Lucto spiritu Amen



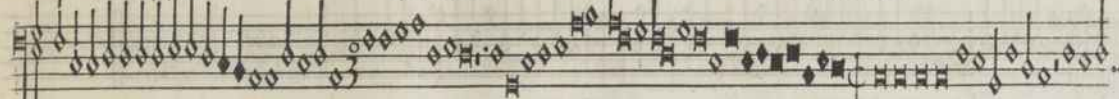
Deus omnipotens
visibilis
Et in unus
filius
de deo vero
genitus
Et in carnate
et homo
Datus
Et resurrexit
secundus
scripturas
Et iterum
cunctis regnat
Et in spiritu



Qui ex patre

qui cu patre

qui loquitur



carholicas

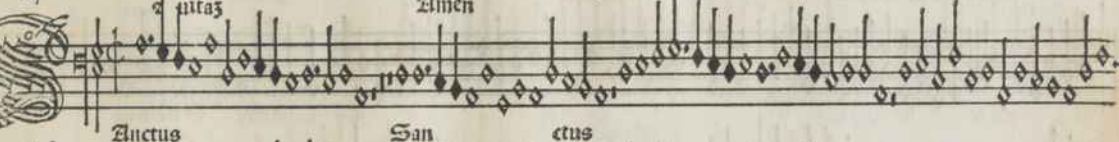
Confiteor

Et expecto



unitas

Amen



Sanctus

San

ctus



Pleni

Erant



Benedictus

121

tere

Two staves of musical notation. The top staff begins with a treble clef and a common time signature (C). The bottom staff begins with a treble clef and a common time signature (C). The music consists of square neumes on a four-line staff. The bottom staff concludes with the text: *Qui venit Osanna* and *Et ex vi supra*.

A musical staff starting with a large, ornate initial 'A' decorated with floral patterns. The staff contains square neumes. Below the staff, the text *Agnus dei* is written.

Two staves of musical notation. The top staff begins with a treble clef and a common time signature (C). The bottom staff begins with a treble clef and a common time signature (C). The music consists of square neumes on a four-line staff.

A musical staff starting with a large, ornate initial 'A' decorated with floral patterns. The staff contains square neumes. Below the staff, the text *Agnus dei* is written.

A musical staff with a treble clef and a common time signature (C). It contains a series of notes, including quarter and eighth notes, with stems pointing upwards. The notes are arranged in a melodic line.

Agnus dei

A musical staff with a treble clef and a common time signature (C). It contains a series of notes, including quarter and eighth notes, with stems pointing upwards. The notes are arranged in a melodic line.



A musical staff with a treble clef and a common time signature (C). It contains a series of notes, including quarter and eighth notes, with stems pointing upwards. The notes are arranged in a melodic line.

rie

A musical staff with a treble clef and a common time signature (C). It contains a series of notes, including quarter and eighth notes, with stems pointing upwards. The notes are arranged in a melodic line.

Christe

A musical staff with a treble clef and a common time signature (C). It contains a series of notes, including quarter and eighth notes, with stems pointing upwards. The notes are arranged in a melodic line.

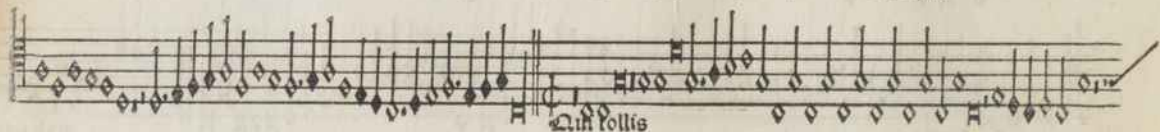
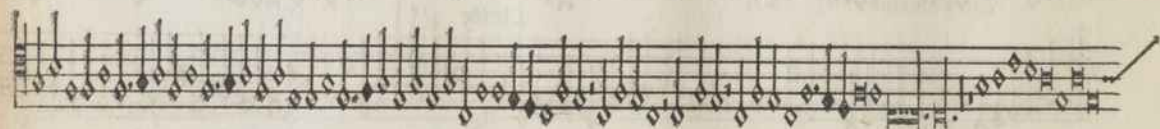
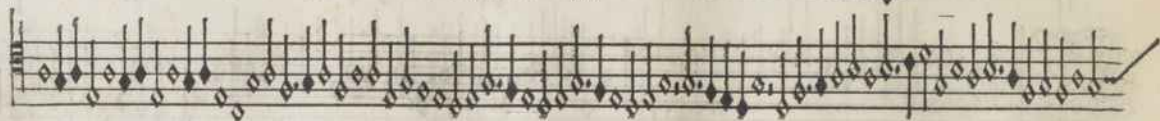
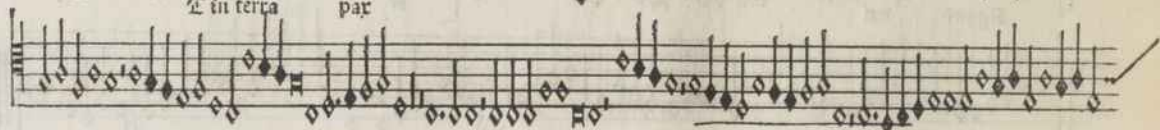
A musical staff with a treble clef and a common time signature (C). It contains a series of notes, including quarter and eighth notes, with stems pointing upwards. The notes are arranged in a melodic line.

rie

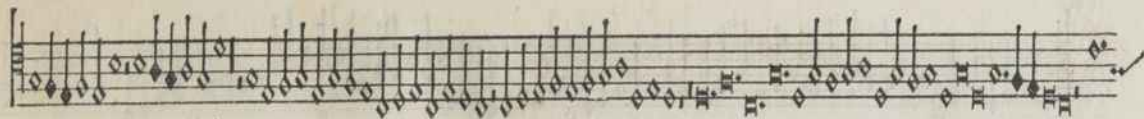
Christe



E in terra par



Qui tollis



Cū sancto spiritu



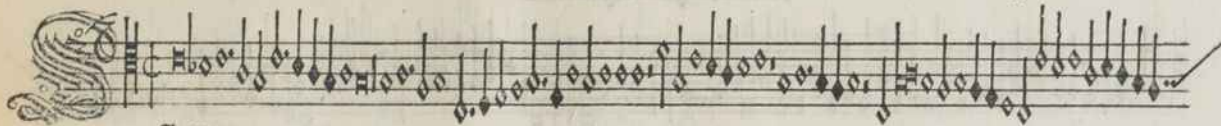
Atque omnipotentes



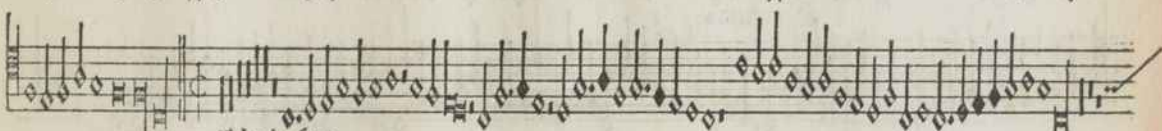
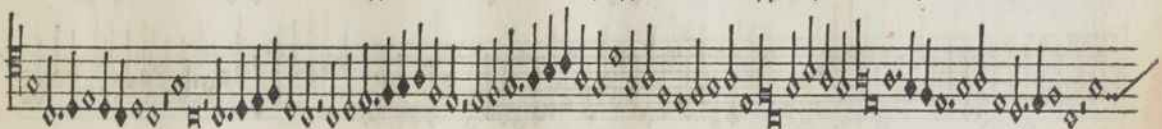
Certe

A page of handwritten musical notation on aged paper, featuring six staves of music. The notation is dense, with many notes and stems. The third staff from the top has the word "Crucifix?" written above it. The music appears to be a single melodic line, possibly for a voice or a single instrument. The paper shows signs of age, including some staining and discoloration.

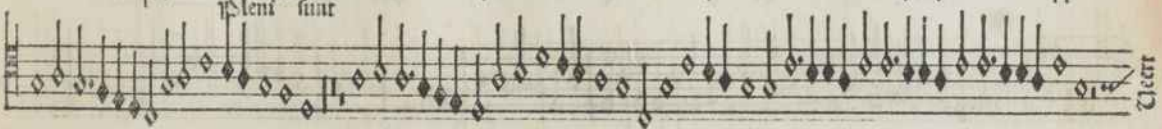
Crucifix?



Antus



Pleni sunt



Uter

This image shows a page of handwritten musical notation on aged paper. The page contains six staves of music, each with a treble clef and a common time signature (C). The notation is a form of rhythmic shorthand, consisting of vertical stems and small circles or diamonds placed at various heights to indicate pitch and rhythm. The music is organized into measures by vertical bar lines. Two sections are explicitly labeled: "Gloria" is written below the third staff, and "Benedictus" is written below the fourth staff. The notation is dense and covers the entire length of each staff. The paper shows signs of age, including some staining and a slightly yellowed tone.

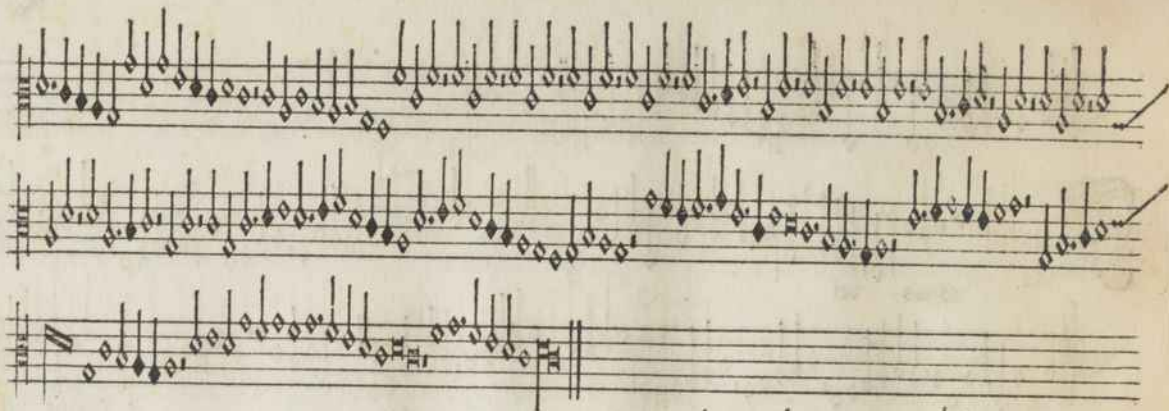
Gloria
ut supra

Gloria dei

Agnus dei

Agnus dei

Utric



A decorative initial letter 'A' in a stylized, calligraphic font begins the first staff of this section. The musical notation consists of three staves. The first staff has the word "yrie" written below it. The second staff has the word "Christe" written below it. The notation includes various note values, including eighth and sixteenth notes, and rests.

A musical staff in treble clef with a common time signature (C). It begins with a double bar line and contains a series of rhythmic figures, primarily consisting of eighth and sixteenth notes, with some rests.

Kyrie

A musical staff starting with a large, ornate initial 'K' in a Gothic script. The staff contains rhythmic notation in treble clef with a common time signature, featuring eighth and sixteenth notes.

In terra pax

A musical staff in treble clef with a common time signature, containing rhythmic notation of eighth and sixteenth notes.

glorificamus te

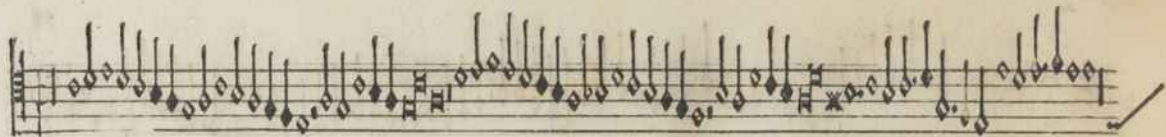
A musical staff in treble clef with a common time signature, containing rhythmic notation of eighth and sixteenth notes.

Qui tollis

A musical staff in treble clef with a common time signature, containing rhythmic notation of eighth and sixteenth notes.

A musical staff in treble clef with a common time signature, containing rhythmic notation of eighth and sixteenth notes.

Uerr



Qui ro- te

fuscipe

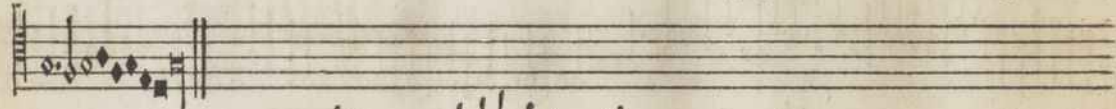


En fol



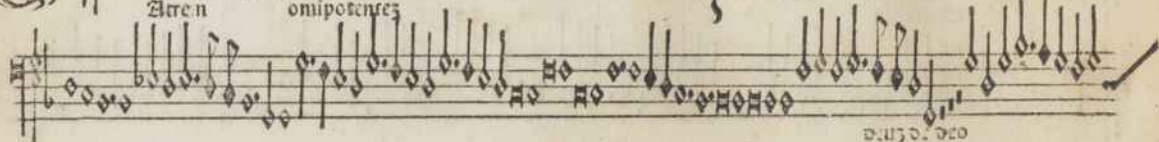
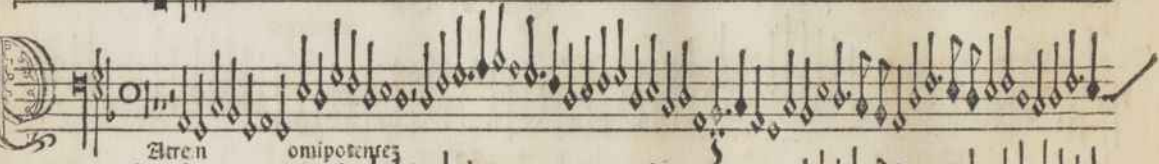
al- ti- mus

In gloria



A- ten

om- ni- po- ten- tes



026. 517. 020

17

genitus p[ro] qu[od] o[mn]ia g pp

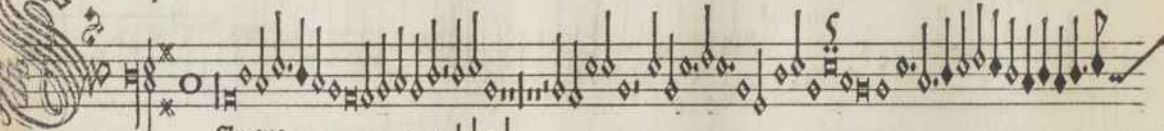
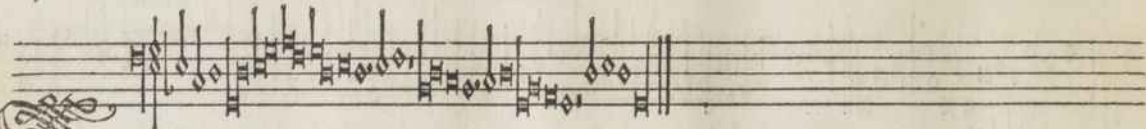
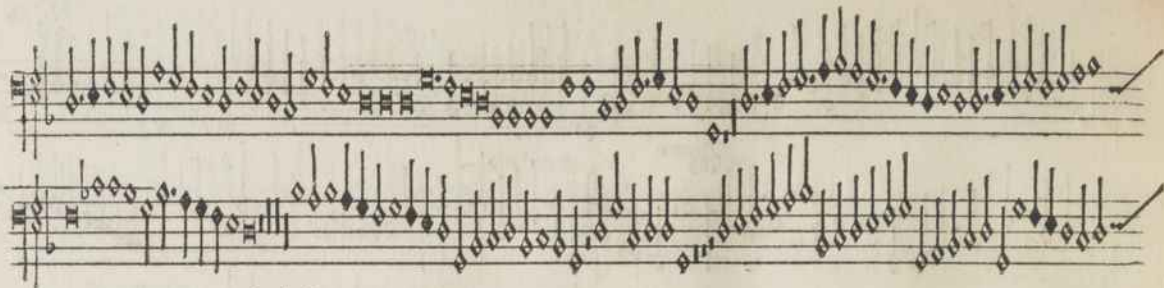
z homo

Crucifix^o sub p[ro]rio

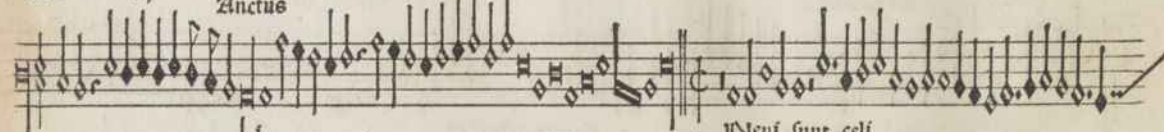
Et resurrexit Et ascēdit

Et iter[um] vētur[us] est

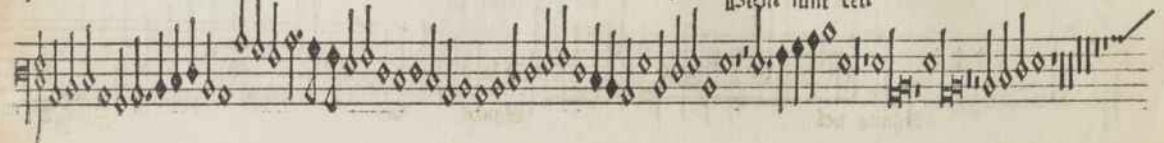
31 Terte



Ancus



Idem sunt celi



Osanna

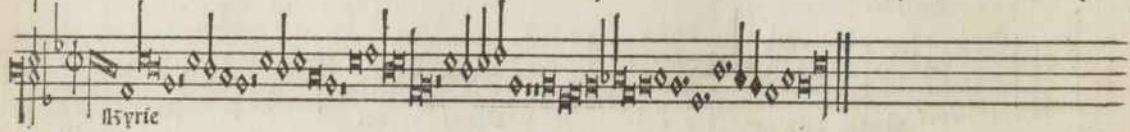
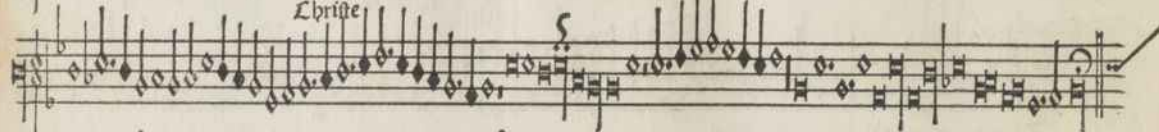
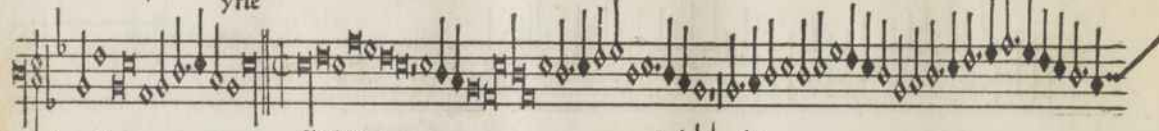
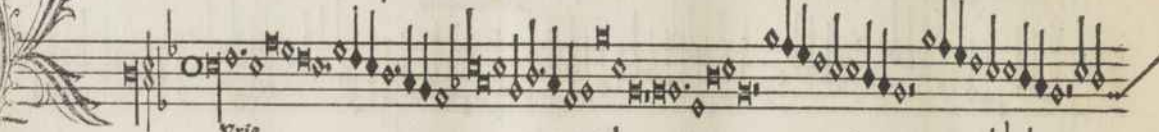
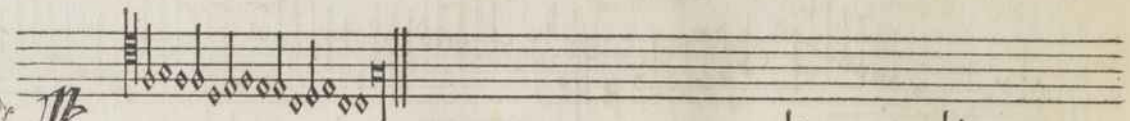
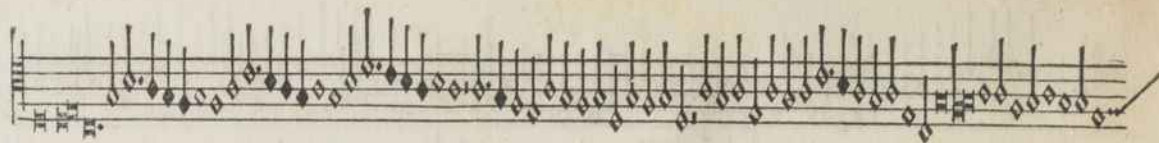
Benedictus

Osanna

Osanna

M Gnus dei

Agnus dei Agnus dei





In terra pax benedicim⁹ glorificamus
 gr̄as

Qui tollis

Qui tollis suscipe

q̄ sedes

Quoniam

Jesu xpe cū sc̄o

Fi iii



S
Zelus

Et in terra

Anna

Benedictus

The image shows a page of handwritten musical notation on aged paper. It features six staves of music. The notation includes various note values (minims, crotchets, quavers), rests, and clefs. The music is written in a style characteristic of 17th or 18th-century manuscripts. The text labels 'Zelus', 'Et in terra', 'Anna', and 'Benedictus' are placed below the staves to indicate different sections of the piece. A large, decorative initial 'S' is at the top left, with a treble clef and a key signature of one flat. The paper shows signs of age, including some staining and discoloration.

Danna
 vi supra

Gnus dei

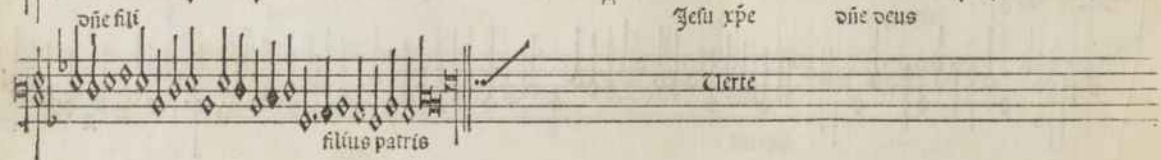
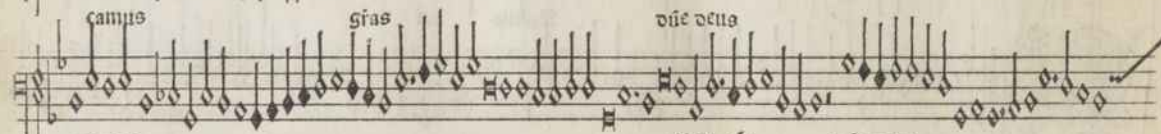
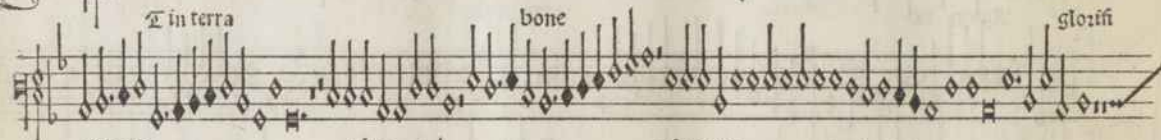
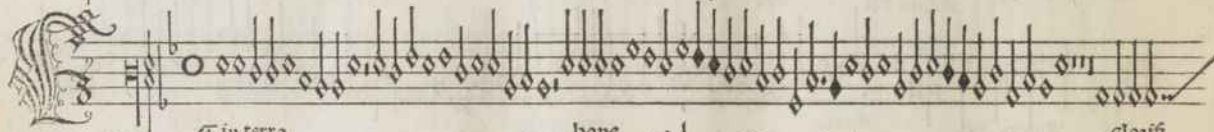
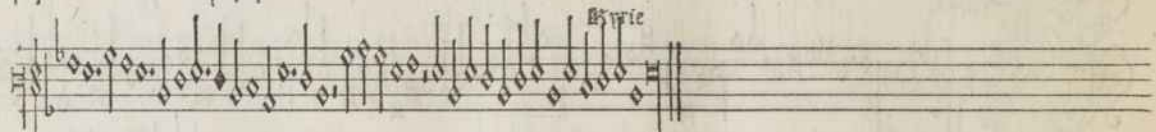
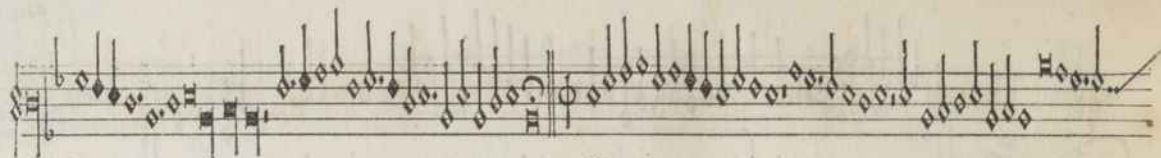
Agnus dei

Agnus dei

Vrie

Christe

Terte



arie

in terra

bone

glorifi

campus

gras

die deus

die fili

Jesu xpe

die deus

terre

filius patris

*mi*serere Qui tollis suscipe
des *mi*serere Tu solus altissimus
Zesuxpe Lūctō
In gloria
Etres visibilia
Et in unū

14

deus de deo

genitum

ex maria

p que oia

crucifix

Et incarnat° e

Et resurrexit

Facet

Et iter

cū gloria

vivos

cuius regni

Et in spm̄

sanctū dñz

q xp̄ie

q cū pie

Lohiteoz
 Et vita
 Anctus
 Et terra
 Sanna
 Benedictus

Credo

In nomine

Gloria

Agnus dei

Agnus dei

Gloria

Gloria
ut supra

Impſſum Venetijs per Octavianum Petrutius Foroleſem, prien-
ſem 1503 die 17 Junij. Cum priuilegio inuictiſſimi Domini
Venetiarum qd nullus poſſit eantem figuratum imprimere
ſub pena in ipſo priuilegio contenta.

Regiſtrum ABEF in ſignum D gntern^o LS duerni.



Faint, illegible text, possibly bleed-through from the reverse side of the page.

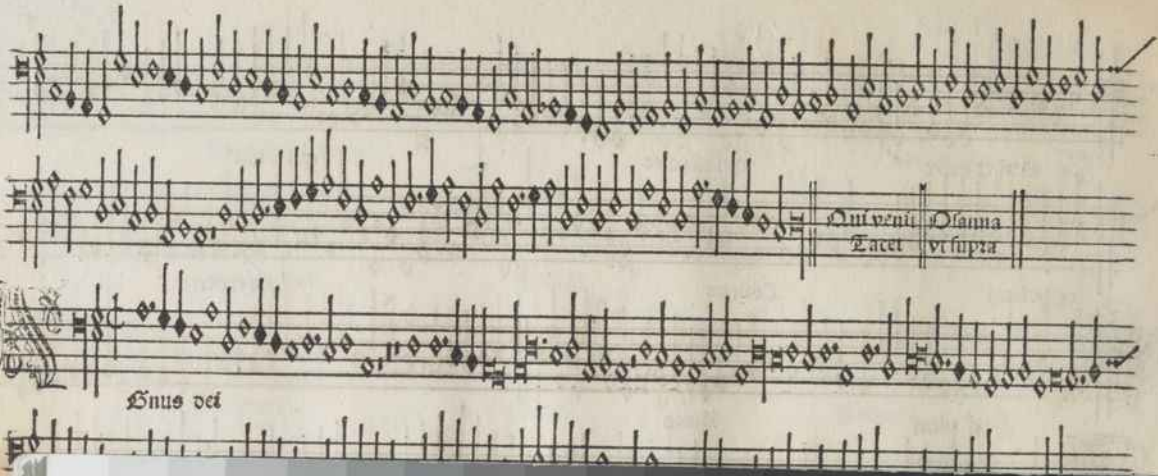


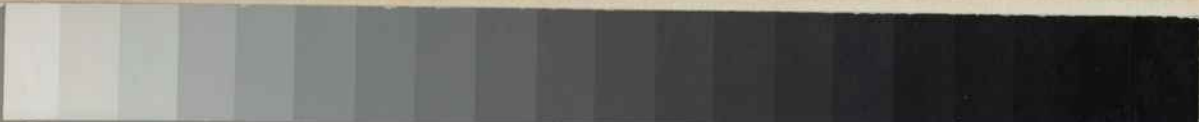
ÖNB



+Z138217504







0 1 2 3 4 5 6 7 8 9 10 11 12 13 14 15 16 17 18 19
1 2 3 4 5 6 7 8 9 10 11 12 13 14 15 16 17 18 19 20

IMAGO
PHOTOGRAPHIC

COLOUR AND MONOCHROME SEPARATION GUIDE

BLUE CYAN GREEN YELLOW RED MAGENTA WHITE 3/COLOUR BLACK

