

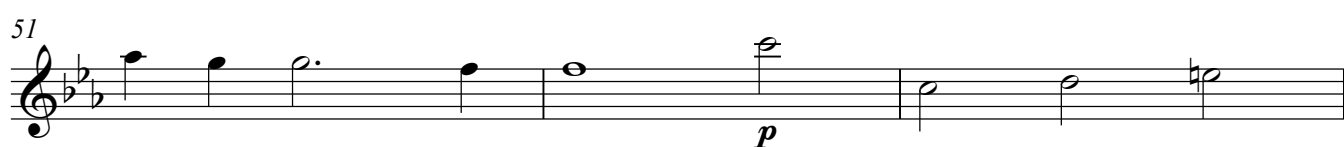
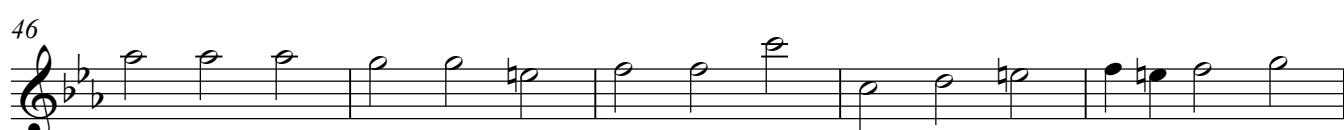
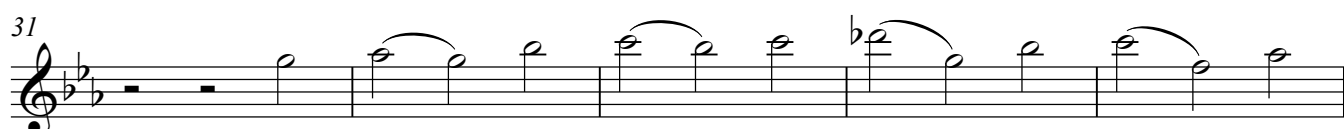
Sonata a 2 Flauti

William Williams (1677-1704)

I - Adagio



II - Largo



54

A single musical staff in 3/4 time with a key signature of two flats. It contains seven measures: a quarter note (Bb), a dotted quarter note (Ab), a half note (G), a quarter note (F), a quarter note (E), a quarter note (D), a quarter note (C), and a whole note (Bb). The piece ends with a double bar line and a key signature change to one flat.

57 **III - Allegro**
2

A musical staff in 3/4 time with a key signature of two flats. It begins with a triplet of eighth notes (Bb, Ab, G) marked with a '2' over it. The piece continues with eighth and sixteenth notes, ending with a dotted quarter note (G) and a quarter note (F).

62

A musical staff in 3/4 time with a key signature of two flats, featuring a continuous stream of eighth notes in an ascending and then descending pattern.

66

A musical staff in 3/4 time with a key signature of two flats, containing eighth notes with various slurs and rests.

71

A musical staff in 3/4 time with a key signature of two flats, featuring eighth notes with slurs.

74

A musical staff in 3/4 time with a key signature of two flats, containing eighth notes with slurs.

77

A musical staff in 3/4 time with a key signature of two flats, featuring eighth notes with slurs.

81

A musical staff in 3/4 time with a key signature of two flats, containing eighth notes with slurs.

85

A musical staff in 3/4 time with a key signature of two flats, featuring eighth notes with slurs.

90

A musical staff in 3/4 time with a key signature of two flats, containing eighth notes with slurs.

93

A musical staff in 3/4 time with a key signature of two flats, featuring eighth notes with slurs, ending with a whole note (Bb).