

*Andante*

*dolce*

*Le bon ne*

*blanche huit dans les bois*

*Ja cha - que bran - che*

The first system of the handwritten musical score consists of two staves. The upper staff is a vocal line in G major, 3/4 time, with a tempo marking of 'Andante' and a dynamic marking of 'dolce'. The lyrics 'Le bon ne' are written below the notes. The lower staff is a piano accompaniment in G major, 3/4 time, featuring a bass line with a 'p' dynamic marking and a treble line with chords and single notes.

The second system of the handwritten musical score consists of two staves. The upper staff is a vocal line in G major, 3/4 time, with the lyrics 'blanche huit dans les bois' written below. The lower staff is a piano accompaniment in G major, 3/4 time, with a bass line and a treble line containing chords and melodic fragments.

The third system of the handwritten musical score consists of two staves. The upper staff is a vocal line in G major, 3/4 time, with the lyrics 'Ja cha - que bran - che' written below. The lower staff is a piano accompaniment in G major, 3/4 time, with a bass line and a treble line containing chords and melodic fragments.

Handwritten musical notation on a single staff. The lyrics "part u ne roise" are written below the notes. The time signature is 3/4.

Handwritten musical notation on two staves (treble and bass clef). The lyrics "sous la da" are written below the notes.

Handwritten musical notation on a single staff. The lyrics "me' e," are written below the notes.

Handwritten musical notation on two staves. The lyrics "pas pas pas" are written below the notes. There are dynamic markings *pp* and *mf*.

Handwritten musical notation on a single staff. The lyrics "O bien ar" are written below the notes. There is a dynamic marking *cresc.*

Handwritten musical notation on two staves. The lyrics "pas pas pas pas" are written below the notes. There are dynamic markings *cresc. en so* and *molto*.

1/31 Legende 500 fr. (Alley Street)

*f*  
me e!

*p* l'a-tang se fle - ta

profond mi - voir

*mf*  
La sil houet — te du

The first system of the handwritten musical score consists of two staves. The upper staff is a vocal line in G major, starting with a treble clef and a key signature of one sharp (F#). It contains a melodic line with lyrics "La sil houet — te du" written below it. A dynamic marking of *mf* (mezzo-forte) is placed above the first measure. The lower staff is a piano accompaniment in G major, starting with a bass clef and a key signature of one sharp. It features a bass line with chords and moving lines.

lan — le noir ou le vent

The second system of the handwritten musical score consists of two staves. The upper staff is a vocal line in G major, continuing the melody with lyrics "lan — le noir ou le vent" written below it. The lower staff is a piano accompaniment in G major, providing harmonic support with chords and a bass line.

plau — re

The third system of the handwritten musical score consists of two staves. The upper staff is a vocal line in G major, with lyrics "plau — re" written below it. The lower staff is a piano accompaniment in G major, continuing the harmonic accompaniment.

Handwritten musical notation on a single staff. It begins with a treble clef and a key signature of one flat (B-flat). The notes are: G4, A4, Bb4, C5, Bb4, A4, G4. There are dynamic markings *pp* and *mf*. A slur covers the first four notes. The lyrics "Ri - - - - - vous , - - - - - c'est" are written below the staff.

Handwritten musical notation for piano accompaniment. The top staff is in treble clef with a key signature of one flat. The bottom staff is in bass clef with a key signature of one flat. The piano part consists of chords and moving lines. There are dynamic markings *pp* and *mf*.

Handwritten musical notation on a single staff. It begins with a treble clef and a key signature of one flat. The notes are: G4, A4, Bb4, C5, Bb4, A4, G4. The lyrics "l'heu - - - - - re . . . . ." are written below the staff.

Handwritten musical notation for piano accompaniment. The top staff is in treble clef with a key signature of one flat. The bottom staff is in bass clef with a key signature of one flat. The piano part consists of chords and moving lines. There is a dynamic marking *mf*. The lyrics "Cred - - - - - can - - - - - do" are written below the staff.

Handwritten musical notation on a single staff. It begins with a treble clef and a key signature of one flat. The notes are: G4, A4, Bb4, C5, Bb4, A4, G4. The lyrics "Un" are written below the staff. The staff ends with a 3/4 time signature.

Handwritten musical notation for piano accompaniment. The top staff is in treble clef with a key signature of one flat. The bottom staff is in bass clef with a key signature of one flat. The piano part consists of chords and moving lines. There are dynamic markings *mf* and *ped*. The staff ends with a 3/4 time signature.

cal — — — me et l'air des a-pai — — — de

pp

ment sem-ble des cen-dre de la fin ma

p

ff

ment que l'air — — — tri-ri — — —

pp

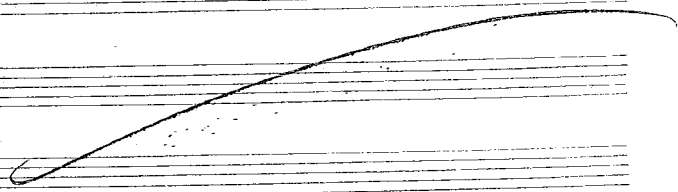
p

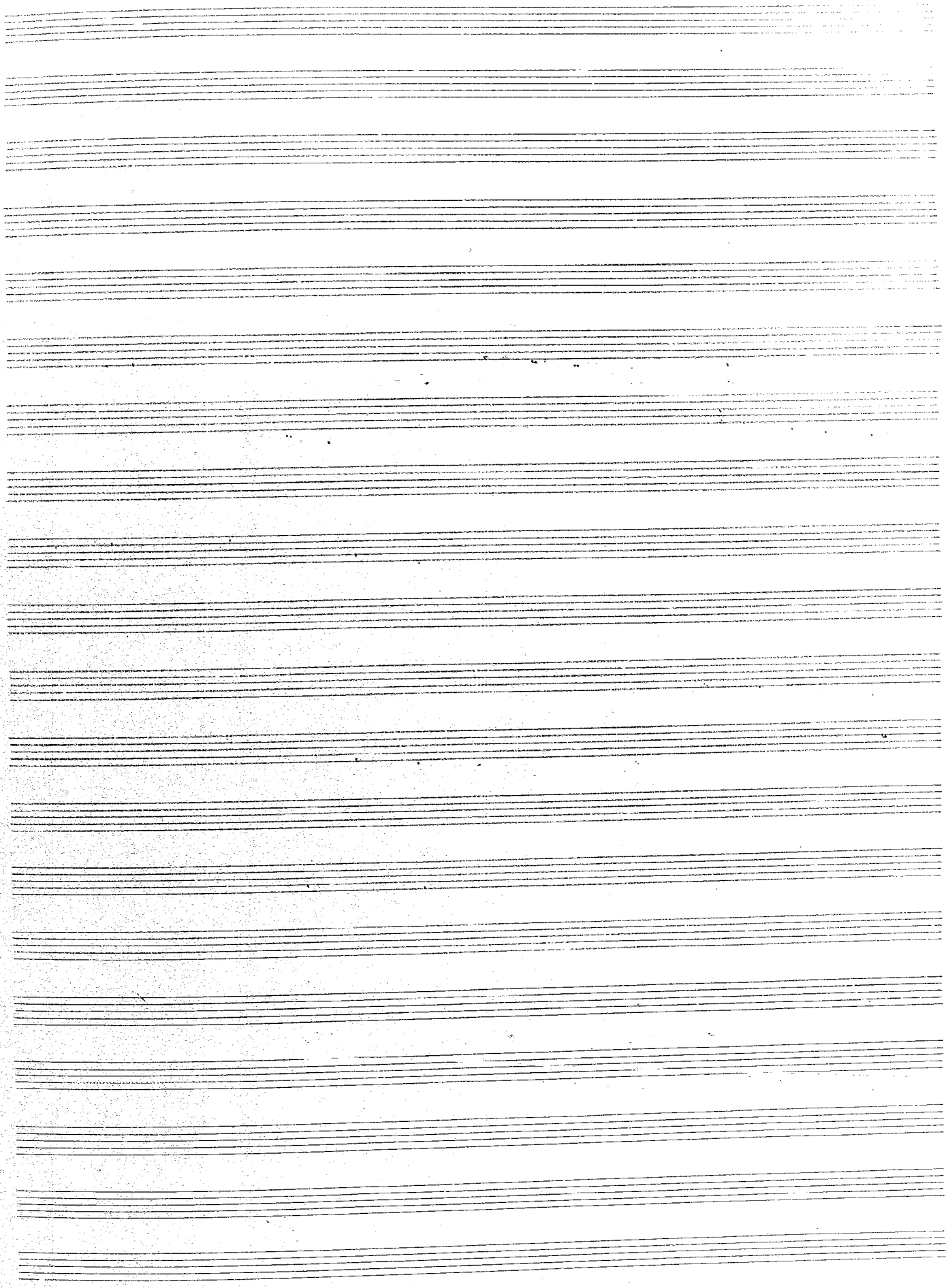
de

*Solennissimo*

C'est l'heu - reux

qui se







Allaqua

*Crescendissimo*

*mf*

*f*

19  
Donc ce sera pas

The piano accompaniment for the first system consists of two staves. The treble staff contains a melodic line with eighth and sixteenth notes, while the bass staff provides a rhythmic accompaniment with chords and moving lines. Dynamic markings include *mf* and *f*.

un beau jour d'été :

The piano accompaniment for the second system continues the piece. It features similar rhythmic patterns and dynamic markings as the first system, with a *mf* marking at the beginning.

*mf*  
à la grande soleil compli- ce de ma foi

The piano accompaniment for the third system concludes the visible portion of the score. It maintains the same musical style and dynamic markings, ending with a final chord in the bass staff.

Fe-ra, parmi le sa-tin et la soie, plus

(Bible)  
1831 Opus 5000 Fi.

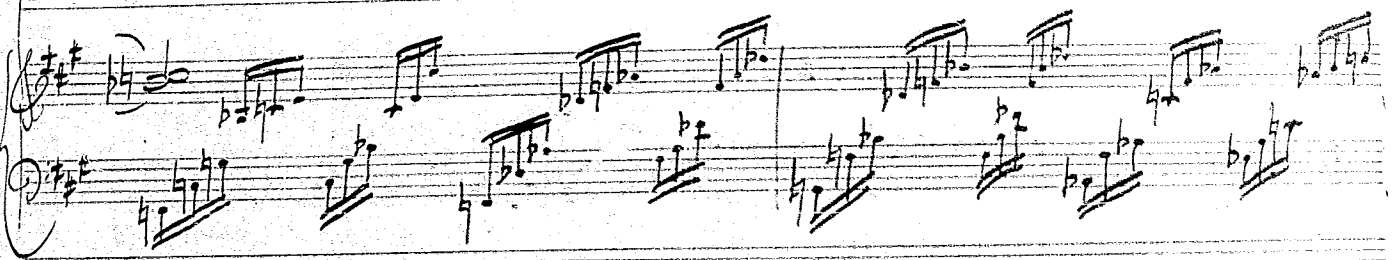
*cresc.* bel - le en - co - re ro - ti

*mf*

*f* ché - ra beau-té ;

*dimin.*

*f*  
Le ciel tout bleu comme un haubert



*piu - mos*  
Ten ta, Feid-son-ne-ra, Samp-tu



*f sempre*  
ene, à longes plis, sur nos deus



fronte qu'au bout pa-li

*meno f*

maintien du bonheur et l'at

*f* *tempo*

*cresc.*

ten - te :

*f* *tempo*

*piu* *piu* *piu* *piu*

*poco a poco dim. - rall. - p*

Handwritten musical score for the first system, featuring a vocal line and piano accompaniment in G major and 6/4 time. The tempo and dynamics markings are "poco a poco dim. - rall. - p".

*molto più lento* *dolce*  
*molto più lento* *Et*

Handwritten musical score for the second system, featuring a vocal line and piano accompaniment. The tempo marking is "molto più lento" and the dynamics are "dolce" and "Et".

*quando la sera vien dra l'air se-ra doux qui se joue*

Handwritten musical score for the third system, featuring a vocal line and piano accompaniment. The lyrics are "quando la sera vien dra l'air se-ra doux qui se joue".

ra, ca-est sanct sans vos 8 voi les,

Et les regards pai-di-les les i-

*pp* *Sempre Dolce*  
toi les bien-veillament

Handwritten musical notation on a single staff. The key signature is two sharps (F# and C#). The lyrics below the staff are: *don - 25 - tout aux e - pour*

Handwritten musical notation on two staves. The top staff is in treble clef and the bottom staff is in bass clef. Both are in the key of D major. The music features a melody with slurs and accents, and a bass line with chords and some accidentals. There are some handwritten annotations like '2' above notes and 'pp' below the bass line.

Handwritten musical notation on two staves. The top staff is in treble clef and the bottom staff is in bass clef. The music continues with a melody and accompaniment. The bottom staff shows some complex chordal structures and a final flourish on the right side.

Several empty musical staves at the bottom of the page, showing the five-line structure without any notation.

