

Sanctus:

6b. *Sechster*

Handwritten musical score for Sanctus, featuring multiple staves with notes and rests. The notation includes various rhythmic values and clefs. The score is written in brown ink on aged paper.

Annotations and markings include:

- tr.* (trill) above the first staff.
- mf.* (mezzo-forte) above the second staff.
- ritto.* (ritardando) above the third staff.
- tr.* (trill) above the fourth staff.
- tr.* (trill) above the fifth staff.
- tr.* (trill) above the sixth staff.
- tr.* (trill) above the seventh staff.
- tr.* (trill) above the eighth staff.
- tr.* (trill) above the ninth staff.
- tr.* (trill) above the tenth staff.
- tr.* (trill) above the eleventh staff.
- tr.* (trill) above the twelfth staff.
- tr.* (trill) above the thirteenth staff.
- tr.* (trill) above the fourteenth staff.
- tr.* (trill) above the fifteenth staff.
- tr.* (trill) above the sixteenth staff.
- tr.* (trill) above the seventeenth staff.
- tr.* (trill) above the eighteenth staff.
- tr.* (trill) above the nineteenth staff.
- tr.* (trill) above the twentieth staff.
- tr.* (trill) above the twenty-first staff.
- tr.* (trill) above the twenty-second staff.
- tr.* (trill) above the twenty-third staff.
- tr.* (trill) above the twenty-fourth staff.
- tr.* (trill) above the twenty-fifth staff.
- tr.* (trill) above the twenty-sixth staff.
- tr.* (trill) above the twenty-seventh staff.
- tr.* (trill) above the twenty-eighth staff.
- tr.* (trill) above the twenty-ninth staff.
- tr.* (trill) above the thirtieth staff.
- tr.* (trill) above the thirty-first staff.
- tr.* (trill) above the thirty-second staff.
- tr.* (trill) above the thirty-third staff.
- tr.* (trill) above the thirty-fourth staff.
- tr.* (trill) above the thirty-fifth staff.
- tr.* (trill) above the thirty-sixth staff.
- tr.* (trill) above the thirty-seventh staff.
- tr.* (trill) above the thirty-eighth staff.
- tr.* (trill) above the thirty-ninth staff.
- tr.* (trill) above the fortieth staff.
- tr.* (trill) above the forty-first staff.
- tr.* (trill) above the forty-second staff.
- tr.* (trill) above the forty-third staff.
- tr.* (trill) above the forty-fourth staff.
- tr.* (trill) above the forty-fifth staff.
- tr.* (trill) above the forty-sixth staff.
- tr.* (trill) above the forty-seventh staff.
- tr.* (trill) above the forty-eighth staff.
- tr.* (trill) above the forty-ninth staff.
- tr.* (trill) above the fiftieth staff.
- tr.* (trill) above the fifty-first staff.
- tr.* (trill) above the fifty-second staff.
- tr.* (trill) above the fifty-third staff.
- tr.* (trill) above the fifty-fourth staff.
- tr.* (trill) above the fifty-fifth staff.
- tr.* (trill) above the fifty-sixth staff.
- tr.* (trill) above the fifty-seventh staff.
- tr.* (trill) above the fifty-eighth staff.
- tr.* (trill) above the fifty-ninth staff.
- tr.* (trill) above the sixtieth staff.



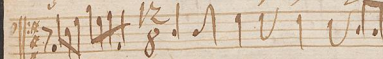
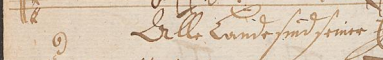
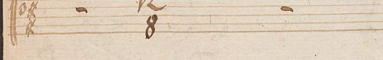
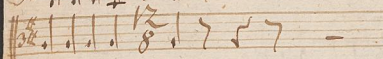
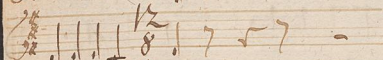
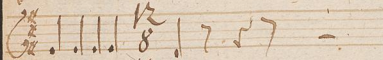
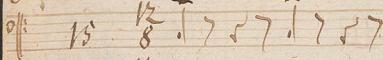
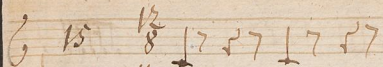
Geiligt. des H. Joh. b. v. l.

Geiligt.
Geiligt.

Handwritten musical score consisting of approximately 10 staves. The notation includes various note values (quarter, eighth, sixteenth notes), rests, and bar lines. The manuscript is written in brown ink on aged paper.

Freilich ist das G. Gebuch,

A single staff of handwritten musical notation at the bottom of the page, featuring a treble clef and various note values.



Tutti con Tenore


Tutti con Alto

Lillo Eando fmd finto Gora

Lillo Eando fmd finto Gora nol, fmd finto

Lillo Eando fmd finto Gora nol, fmd finto Gora, finto Gora nol, fmd

Handwritten musical notation on three staves. The top staff has a treble clef and a common time signature. The middle staff has a treble clef. The bottom staff has a bass clef. The notation consists of rhythmic stems and beams, with some notes indicated by dots. There are some markings above the staves, possibly indicating fingerings or breath marks.

Violin. vif. 

Handwritten musical notation on two staves. The top staff has a treble clef and a common time signature. The bottom staff has a bass clef. The notation consists of rhythmic stems and beams. Below the staves, there is a line of text: *Allo. Cant. sim. siner Horn rol, sim*

Handwritten musical notation on two staves. The top staff has a treble clef and a common time signature. The bottom staff has a bass clef. The notation consists of rhythmic stems and beams. Below the staves, there is a line of text: *Allo. Cant. sim. siner Horn rol, siner Horn rol, sim siner Horn, siner Horn*

Handwritten musical notation on two staves. The top staff has a treble clef and a common time signature. The bottom staff has a bass clef. The notation consists of rhythmic stems and beams. Below the staves, there is a line of text: *Horn, siner Horn rol, sim siner Horn rol,*

Handwritten musical notation on two staves. The top staff has a treble clef and a common time signature. The bottom staff has a bass clef. The notation consists of rhythmic stems and beams. Below the staves, there is a line of text: *sim siner siner Horn rol, Allo. Cant. sim. siner Horn,*

Handwritten musical notation on a single staff with a bass clef. The notation consists of rhythmic stems and beams.

<p>vol.</p>	<p>allegro. <i>Canto, finto finto Ham, finto Ham vol, finto finto Ham</i></p>		

Handwritten musical notation on a five-line staff, featuring various rhythmic values and stems.

Handwritten musical notation on a five-line staff, continuing the piece with similar rhythmic patterns.

Handwritten musical notation on a five-line staff, showing a continuation of the musical text.

Handwritten musical notation on a five-line staff, with some notes appearing to be beamed together.

Handwritten musical notation on a five-line staff, featuring a mix of note values and rests.

Handwritten musical notation on a five-line staff, showing a transition in the musical phrase.

Handwritten musical notation on a five-line staff, with a central section containing a large 'o' and a curved line.

Handwritten musical notation on a five-line staff, continuing the melodic line.

Handwritten musical notation on a five-line staff, showing a continuation of the musical text.

Handwritten musical notation on a five-line staff, with a central section containing a large 'o' and a curved line.

Handwritten musical notation on a five-line staff, with the text *Finis Secus, finis finis Secus* written below the staff.

Handwritten musical notation on a five-line staff, concluding the piece with a final note.

Handwritten musical notation on eight staves. The notation consists of rhythmic symbols (vertical stems with flags) and rests, typical of early printed music notation. Each staff begins with a clef and a time signature. The notes are arranged in a structured, rhythmic pattern across the staves.

Finis finis. Item vol.

