

PROFANA 32 (old A.2)

Cherubini, Luigi

Nè il Superbo Pavon si vago in mostra/Canzonetta/La
Cintura d'Armida/con/L'Accompagnamt. Del Piano=Forte/
Del Sig:^{re} Luigi Cherubini

MSS 29.5x22 cm 10 pp (t.p., 1 blank)

Neil Superbo Pavon si' ogo in mostra

Canzone & a

La Cintura d' Armida

Con

l'Accompagnam^{to} Del Piano-Forte

Del

Signor Luigi Cherubini

32

32.

Canto

Piano-Forte

Andante

This system contains three staves. The top staff is for the vocal line, labeled 'Canto', and begins with a treble clef, a key signature of one flat, and a 2/4 time signature. The middle and bottom staves are for the piano accompaniment, labeled 'Piano-Forte' and 'Andante' respectively. The piano part features a complex texture with many beamed sixteenth notes.

Ne il Superbo da von si vago in mostra

This system contains three staves. The top staff is the vocal line with the lyrics 'Ne il Superbo da von si vago in mostra'. The middle and bottom staves are the piano accompaniment, continuing the complex texture of beamed sixteenth notes.

Spiega la pompa dell' occulto Die me

This system contains three staves. The top staff is the vocal line with the lyrics 'Spiega la pompa dell' occulto Die me'. The middle and bottom staves are the piano accompaniment. The system concludes with several empty staves at the bottom of the page.

Se l'gride si bella, ne'

l'gride si bella in dorat e nostra

il curvo gumbo e' rugiadoso allume

ma bel sovra ogni fregio il Cinto

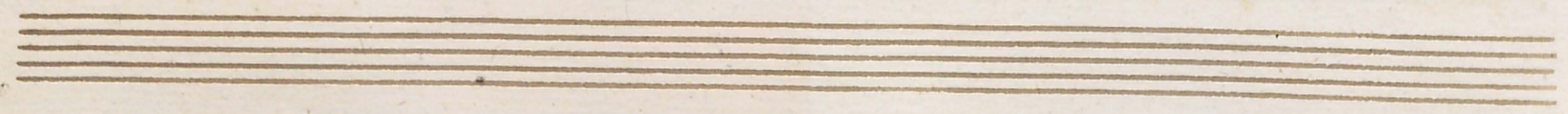
The first system of the handwritten musical score consists of two staves. The upper staff is the vocal line, and the lower staff is the piano accompaniment. The lyrics 'ma bel sovra ogni fregio il Cinto' are written above the vocal line. The music is in a minor key, indicated by a flat sign on the key signature. The vocal line begins with a melodic phrase, followed by a series of notes and rests. The piano accompaniment provides harmonic support with chords and moving lines.

mostro
che neppur
nuda ha
di lasciar cos.

The second system of the handwritten musical score consists of two staves. The upper staff is the vocal line, and the lower staff is the piano accompaniment. The lyrics 'mostro che neppur nuda ha di lasciar cos.' are written above the vocal line. The music continues with a similar melodic and harmonic structure to the first system. The vocal line features a melodic phrase followed by a series of notes and rests. The piano accompaniment provides harmonic support with chords and moving lines.

Se me
Die' corpo a' chi non

The third system of the handwritten musical score consists of two staves. The upper staff is the vocal line, and the lower staff is the piano accompaniment. The lyrics 'Se me Die' corpo a' chi non' are written above the vocal line. The music concludes with a final melodic phrase and a series of notes and rests. The piano accompaniment provides harmonic support with chords and moving lines.

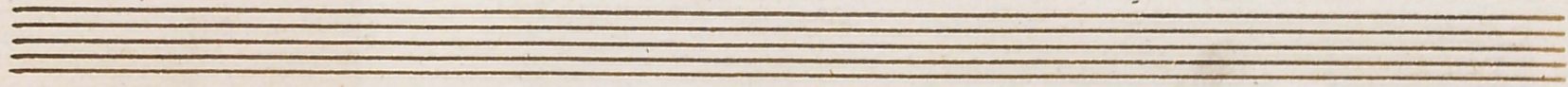


L'ebbe, die' corpo a' chi non L'ebbe e' quando il

face, sempre mi chio' ch'al trui mecer non

L'ebbe, *Andantino*
Teneri

Andantino



Adagio e placido e tranquillo, Repulso e cari

vogli e Lieto paci, Sorride paro,

letto e dolci, dolci Stille, di pianto e sospir

tronchi e molli baci, e molli ba- ci

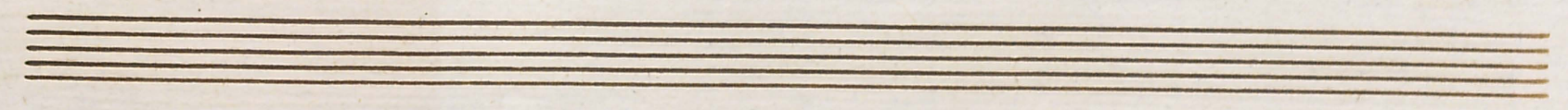
The first system of the handwritten musical score consists of two staves. The upper staff is a vocal line with lyrics written in cursive: "tronchi e molli baci, e molli ba- ci". The lower staff is a piano accompaniment with a treble clef and a key signature of one flat. The music is written in a simple, elegant style characteristic of 18th-century manuscripts.

quasi fai cose tutte e pos- cia u n ille

The second system of the handwritten musical score consists of two staves. The upper staff is a vocal line with lyrics: "quasi fai cose tutte e pos- cia u n ille". The lower staff is a piano accompaniment with a treble clef and a key signature of one flat. The lyrics are written in cursive and include a hyphenated word "pos- cia" and a long line for "u n ille".

ed al fianco tempo di Lenti faci

The third system of the handwritten musical score consists of two staves. The upper staff is a vocal line with lyrics: "ed al fianco tempo di Lenti faci". The lower staff is a piano accompaniment with a treble clef and a key signature of one flat. The lyrics are written in cursive, with "Lenti" and "faci" written in a larger, more decorative hand.



e *re* *for* *mo* *quel* *si* *mirabil* *cin* *do*.

The first system of the handwritten musical score consists of two staves. The upper staff is a vocal line with lyrics written in Italian: "e re for mo quel si mirabil cin do." The notes are mostly quarter and eighth notes. The lower staff is a piano accompaniment with a treble clef, featuring a rhythmic pattern of eighth and sixteenth notes.

di *ch'ella* *a* *ve* *va* *it* *bel* *fr* *an* *co* *suc* *cin*

The second system continues the musical piece. The vocal line has lyrics: "di ch'ella a ve va it bel fr an co suc cin". The piano accompaniment continues with similar rhythmic patterns. There are some dynamic markings like "f" (forte) above the notes.

fo, *e* *re* *for* *mo* *quel* *si* *mirabil*

The third system concludes the page. It starts with a repeat sign and the lyrics "fo, e re for mo quel si mirabil". The piano accompaniment continues. At the bottom of the page, there are several empty musical staves.

Cin *do* *di ch'ella aveva il bel* *fianco* *Luc*

The first system of handwritten musical notation consists of two staves. The upper staff is a vocal line with lyrics written in cursive: "Cin do di ch'ella aveva il bel fianco Luc". The lower staff is a piano accompaniment line with chords and melodic fragments.

cin *do* *il bel fianco* *Luc* *cin* *do* *il bel*

The second system of handwritten musical notation consists of two staves. The upper staff is a vocal line with lyrics: "cin do il bel fianco Luc cin do il bel". The lower staff is a piano accompaniment line.

fianco *Luc* *cin* *do*

The third system of handwritten musical notation consists of two staves. The upper staff is a vocal line with lyrics: "fianco Luc cin do". The lower staff is a piano accompaniment line. The system concludes with a double bar line.



10

32M

£ 70.000

The page contains ten sets of five-line musical staves, arranged vertically. Each set consists of five parallel horizontal lines. Faint, handwritten musical notation is visible on the staves, including various note heads, stems, and beams. The handwriting is light and somewhat illegible due to fading. The paper is aged and shows signs of wear, including discoloration and small spots.