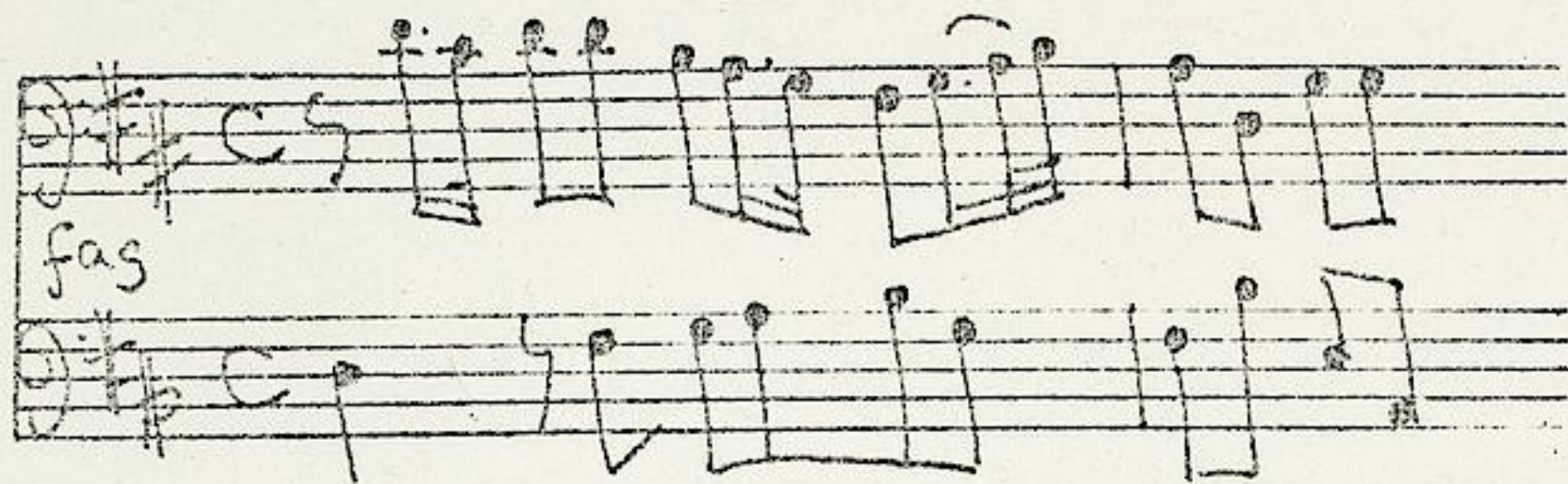


Fasch, Johann Friedrich (1688-1758) BRD DS Mus.ms 297/2

Sonata. Del Sign: Fasch. / [Stimmbez.:] Flute Travers: / Violino. /  
Bassone / Cembalo. / (D-dur) [Kopftitel]



Largo C D-dur - Allegro  
2/4 D-dur - Largo 3/4  
h-moll - Allegro 3/8  
D-dur.

Ms. ca. 1740.

34 x 20,5 cm.

partitur: 2 Bl.

Alte Sign.: Stempel: L mit Krone. 3867.

Schreiber: J.S. Endler oder Grünwald.

Die Stimmen vgl. Mus.ms 298/2. Die autographe Partitur vgl.  
Mus. 297/4.



# Sonata.

Del Sign. Fasch.

Fute Travers.

*Largo*

Violino.

Bassone

Cembalo.

*Largo*

Handwritten musical notation for the first system, including staves for Flute Traverso, Violino, Bassone, and Cembalo.

Handwritten musical notation for the second system, including staves for Flute Traverso, Violino, Bassone, and Cembalo.

Handwritten musical notation for the third system, including staves for Flute Traverso, Violino, Bassone, and Cembalo.

Handwritten musical notation for the fourth system, including staves for Flute Traverso, Violino, Bassone, and Cembalo.

*Allegro*

Handwritten musical notation for the fifth system, including staves for Flute Traverso, Violino, Bassone, and Cembalo.

This image shows a page of handwritten musical notation on aged, yellowed paper. The score is organized into several systems, each consisting of multiple staves. The notation includes various musical symbols such as notes, rests, and clefs. On the right side of the page, there are three distinct dynamic markings: "Cargio" (likely a misspelling of "Cresc."), "Allegro", and another "Allegro". The handwriting is in a historical style, and the paper shows signs of age and wear.



*Adagio*

Großherzoglich  
Hessische  
Hofbibliothek

*Allegro*

This image shows a page of handwritten musical notation on aged, yellowed paper. The notation is organized into five systems, each consisting of three staves. The first staff of each system is written in a treble clef, while the second and third staves are in bass clefs. The notation includes various note values, rests, and dynamic markings. A large, decorative flourish is present at the end of the first system. A large, dark scribble is visible on the right side of the page, overlapping the second and third systems. The paper shows signs of age, including some staining and wear.

Großherzoglich  
Hessische  
Hofbibliothek