

Nr.1 Praeld.

Nr.2 Praeld.

Nr.3 Etüde

Allegro moderato

Nr. 4 Praeld.

Musical notation for Nr. 4 Praeld. The piece is written on a single staff in treble clef with a key signature of one sharp (F#). It features a melodic line with various ornaments and a complex accompaniment consisting of sixteenth-note patterns.

Nr. 5 Praeld.

Musical notation for Nr. 5 Praeld. The piece is written on a single staff in treble clef with a key signature of one sharp (F#). It features a melodic line with various ornaments and a complex accompaniment consisting of sixteenth-note patterns.

Nr. 6 Etüde

Vivace

Musical notation for Nr. 6 Etüde. The piece is written on a single staff in treble clef with a key signature of one sharp (F#) and a 3/8 time signature. It features a melodic line with various ornaments and a complex accompaniment consisting of sixteenth-note patterns. The piece includes dynamic markings such as *p*, *f*, *mf*, and *calando*. The word *de - crescen - do* is written below the staff in the middle section.

*calando*

C. 1383 M.

Nr.7 Praeld.

Nr.8 Praeld.

Nr.9 Etüde  
Allegro

Nr.10 Praeld.

Musical notation for Nr.10 Praeld. The piece is in G major and 2/4 time. It features a melodic line with many slurs and ties, and a complex bass line with frequent sixteenth-note patterns. A fermata is placed over the final note.

Nr.11 Praeld.

Musical notation for Nr.11 Praeld. This piece is in G major and 2/4 time. It includes a trill (tr) and a triplet (3) in the upper voice. The bass line is highly rhythmic with many sixteenth notes.

Continuation of the musical notation for Nr.11 Praeld. It shows further melodic and bass line development, including a trill (tr) and a fermata at the end.

Nr.12 Etüde

Allegro

Musical notation for Nr.12 Etüde, first line. The piece is in 2/4 time and begins with a forte (f) dynamic. It features a melodic line with slurs and ties, and a bass line with sixteenth-note patterns.

Musical notation for Nr.12 Etüde, second line. The dynamics shift to piano (p) and then back to forte (f). The melodic and bass lines continue with complex rhythmic patterns.

Musical notation for Nr.12 Etüde, third line. The lyrics "dimi - nuen - do" are written below the notes. The dynamics are marked with f and p.

Musical notation for Nr.12 Etüde, fourth line. The dynamics are marked with p and f. The melodic and bass lines continue.

Musical notation for Nr.12 Etüde, fifth line. The lyrics "cre - scen - do" are written below the notes. The dynamics are marked with p and f.

Musical notation for Nr.12 Etüde, sixth line. The dynamics are marked with f and p. The melodic and bass lines continue.

Musical notation for Nr.12 Etüde, seventh line. The dynamics are marked with mf and p. The melodic and bass lines continue.

Musical notation for Nr.12 Etüde, eighth line. The lyrics "cre - scen - do" are written below the notes. The dynamics are marked with p and f.

Musical notation for Nr.12 Etüde, ninth line. The piece concludes with a melodic line and a bass line ending with a fermata.

Nr.13 Praeld.

tr

Nr.14 Praeld.

Nr.15 Etüde  
Allegretto

f

do f p cre scen do p p cre scen do ritard. do

f a tempo

mf

f p cre

scen do f

Nr. 16 Praeld.

Nr. 17 Praeld.

Nr. 18 Etüde

Allegro

Nr. 19 Praeld.

Nr. 20 Praeld.

Nr. 21 Etüde  
Moderato

Nr. 22 Praeld.

Musical notation for Nr. 22 Praeld. It consists of a single staff in treble clef with a key signature of one sharp (F#). The piece features a melodic line with various ornaments, including mordents and grace notes, and a complex rhythmic pattern with many sixteenth notes.

Nr. 23 Praeld.

Musical notation for Nr. 23 Praeld. It consists of a single staff in treble clef with a key signature of one sharp (F#). The piece features a melodic line with various ornaments, including mordents and grace notes, and a complex rhythmic pattern with many sixteenth notes.

Continuation of the musical notation for Nr. 23 Praeld. This section includes a triplet of sixteenth notes and a five-measure rest, followed by a flourish (fr) indicated by a star symbol.

Nr. 24 Etüde  
Allegretto

Musical notation for Nr. 24 Etüde, marked Allegretto. The piece is in treble clef with a key signature of one sharp (F#). It consists of ten staves of music, primarily featuring sixteenth-note patterns. Dynamic markings include *f*, *mf*, and *p*. There are also performance instructions: "do" and "scen" (likely "scene") with a "cre" (crescendo) marking. The piece concludes with a final *f* dynamic marking.



Nr. 25 Praeld.

Musical notation for Nr. 25 Praeld. The piece is in G major and 3/4 time. It consists of two staves of music. The first staff begins with a treble clef, a key signature of one sharp (F#), and a common time signature. The melody is characterized by flowing eighth and sixteenth notes, often beamed together. The second staff continues the melody, featuring a trill (tr) and a fermata over a final note.

Nr. 26 Praeld.

Musical notation for Nr. 26 Praeld. This piece is in G major and 3/4 time, consisting of a single staff. It features a melodic line with frequent triplets and sixteenth-note patterns, creating a rhythmic and melodic complexity.

Nr. 27 Etüde  
Moderato

Musical notation for Nr. 27 Etüde, Moderato. The piece is in G major and 3/4 time, spanning ten staves. It begins with a mezzo-forte (*mf*) dynamic. The first staff contains the initial melodic phrase. The second staff includes the lyrics "de cre scen do" and "cre scen". The piece features a variety of rhythmic patterns, including triplets and sixteenth-note runs. Dynamics range from *f* (forte) to *pp* (pianissimo). The tempo is marked "Moderato" and includes instructions for "rallent." (ritardando) and "dim. et rallent." (diminuendo and ritardando). The piece concludes with a *pp* dynamic.

Nr. 28 Praeld.

Nr. 29 Praeld.

Nr. 30 Etüde

Allegro

Nr. 31 Praeld.

Two staves of musical notation for 'Nr. 31 Praeld.' in G major, 2/4 time. The first staff begins with a treble clef, a key signature of one sharp (F#), and a common time signature. The melody is characterized by long, sweeping eighth-note lines with various accidentals (flats and sharps) and a trill (tr) near the end. The second staff continues the piece with similar melodic patterns.

Nr. 32 Praeld.

One staff of musical notation for 'Nr. 32 Praeld.' in G major, 2/4 time. The piece features a continuous eighth-note melody with frequent sixteenth-note runs. It includes several sixteenth-note chords marked with a '6' and a triplet of eighth notes marked with a '3'. The piece concludes with a half-note chord.

Nr. 33 Etüde

Allegro

Eleven staves of musical notation for 'Nr. 33 Etüde' in G major, 6/8 time. The tempo is marked 'Allegro'. The piece starts with a dynamic marking of *f* (forte). The melody is a rapid eighth-note pattern with frequent sixteenth-note runs. It includes a triplet of eighth notes and a section marked *dimin.* (diminuendo). The piece features dynamic markings of *p* (piano) and *f* (forte). The lyrics 'cre - scen - do' are written below the notes in the sixth staff. The piece ends with a final *f* dynamic marking.

Nr. 34 Praeld.

Nr. 35 Praeld.

Nr. 36 Etüde

Allegro

*p*

*mf*

*p* *cre* - - - *scen* - - - *do* - - - *f* *dimi* *nuendo*

*mf* *f*

*p* *cre* - - - *scen* - - - *do* *f* *dimi* *nuendo*

Nr.37 Praeld.

Nr. 38 Praeld.

Nr.39 Etüde

Moderato *tr*

Nr.40 Praeld.

Musical notation for Nr.40 Praeld. consisting of two staves of music in G major, featuring flowing sixteenth-note passages and slurs.

Nr.41 Praeld.

Musical notation for Nr.41 Praeld. consisting of one staff of music in G major, featuring sixteenth-note passages and slurs.

Nr.42 Etüde

Allegro giocoso

Musical notation for Nr.42 Etüde, first staff, in G major, 2/4 time, starting with a mezzo-forte (*mf*) dynamic.

Musical notation for Nr.42 Etüde, second staff, continuing the sixteenth-note pattern.

Musical notation for Nr.42 Etüde, third staff, ending with a forte (*f*) dynamic and the word *Fine*.

Musical notation for Nr.42 Etüde, fourth staff, starting with a mezzo-forte (*mf*) dynamic.

Musical notation for Nr.42 Etüde, fifth staff, continuing the sixteenth-note pattern.

Musical notation for Nr.42 Etüde, sixth staff, continuing the sixteenth-note pattern.

Musical notation for Nr.42 Etüde, seventh staff, continuing the sixteenth-note pattern.

Musical notation for Nr.42 Etüde, eighth staff, continuing the sixteenth-note pattern.

Musical notation for Nr.42 Etüde, ninth staff, starting with a piano (*p*) dynamic.

*D.C.al Fine*

Nr. 43 Praeld.

Musical notation for Nr. 43 Praeld. It consists of a single staff with a treble clef and a key signature of two sharps (F# and C#). The piece features a melodic line with various ornaments, including a mordent and a trill, and is characterized by a wide intervallic span.

Nr. 44 Praeld.

Musical notation for Nr. 44 Praeld. It consists of a single staff with a treble clef and a key signature of two sharps. The piece features a melodic line with various ornaments, including a mordent and a trill, and is characterized by a wide intervallic span.

Nr. 45 Etüde

Allegro moderato

Musical notation for Nr. 45 Etüde. It consists of ten staves with a treble clef and a key signature of two sharps. The piece is in 6/8 time and features a complex melodic line with various ornaments, including trills (tr), and dynamic markings such as *f* (forte) and *p* (piano). The notation includes many slurs and ties, indicating a highly technical and expressive piece.

Nr.46 Praeld.

Musical notation for Nr.46 Praeld. The piece is in G major (one sharp) and 2/4 time. It consists of two staves of music. The first staff begins with a treble clef and a key signature of one sharp (F#). The melody is characterized by flowing eighth and sixteenth notes, often grouped with slurs and ties. The second staff continues the melodic line, featuring similar rhythmic patterns and phrasing.

Nr.47 Praeld.

Musical notation for Nr.47 Praeld. This piece is also in G major and 2/4 time. It is presented on a single staff. The melody is more rhythmic and active than Nr.46, featuring frequent sixteenth-note passages and slurs. The key signature remains one sharp.

Nr.48 Etüde  
Andante

Musical notation for Nr.48 Etüde Andante. The piece is in G major and 9/8 time. It spans ten staves. The notation includes various musical markings such as slurs, ties, and dynamic markings like *p* (piano) and *mf* (mezzo-forte). A triplet of eighth notes is marked with a '3' above it. A sixteenth-note figure is marked with a '6' below it. The piece concludes with a final triplet of eighth notes. The key signature is one sharp throughout.



Nr. 49 Praeld.

Musical notation for Nr. 49 Praeld. The piece is in G minor (one flat) and 2/4 time. It features a melodic line with a trill (tr) at the end of the first phrase.

Nr. 50 Praeld.

Musical notation for Nr. 50 Praeld. The piece is in G minor (one flat) and 2/4 time. It includes a trill (tr) and a triplet of eighth notes.

Nr. 51 Etüde

Allegro moderato

Musical notation for Nr. 51 Etüde. The piece is in G minor (one flat) and 2/4 time. It begins with a forte (f) dynamic and includes various articulations such as accents (>), slurs, and dynamic markings like mezzo-forte (mf) and piano (p). The piece concludes with a rallentando (rall.) marking. The lyrics "cre - scen - do" are written under the notes in the lower staves.

Nr.52 Praeld.

Nr.53 Praeld.

Nr.54 Etüde

Allegro giusto

Nr.55 Praeld.

Musical notation for Nr.55 Praeld. The piece is in B-flat major and 3/4 time. It features a melodic line with various ornaments, including trills (tr) and triplets (3).

Nr.56 Praeld.

Musical notation for Nr.56 Praeld. The piece is in B-flat major and 3/4 time. It features a melodic line with various ornaments, including trills (tr) and triplets (3).

Nr.57 Etüde  
Moderato

Musical notation for Nr.57 Etüde. The piece is in B-flat major and 6/8 time. It features a melodic line with various ornaments, including trills (tr) and triplets (3). The tempo is marked Moderato. The piece includes dynamic markings such as *dim. et rall.*, *a tempo*, and *f*.

Nr.58 Praeld.

Musical notation for Nr.58 Praeld. featuring sixteenth-note runs and sixteenth-note chords.

Nr.59 Praeld.

Musical notation for Nr.59 Praeld. featuring sixteenth-note runs and sixteenth-note chords.

Nr.60 Etüde

Allegro

Musical notation for Nr.60 Etüde, starting with a mezzo-forte (*mf*) dynamic.

Musical notation for Nr.60 Etüde, featuring a crescendo (*cre*) and a scene (*scen*) marking.

Musical notation for Nr.60 Etüde, featuring a piano (*p*) dynamic and a forte (*f*) dynamic.

Musical notation for Nr.60 Etüde, featuring a piano (*p*) dynamic and a forte (*f*) dynamic.

Musical notation for Nr.60 Etüde, featuring a piano (*p*) dynamic and a forte (*f*) dynamic.

Musical notation for Nr.60 Etüde, featuring a piano (*p*) dynamic and a forte (*f*) dynamic.

Musical notation for Nr.60 Etüde, featuring a piano (*p*) dynamic and a forte (*f*) dynamic.

Musical notation for Nr.60 Etüde, featuring a piano (*p*) dynamic and a forte (*f*) dynamic.

Musical notation for Nr.60 Etüde, featuring a piano (*p*) dynamic and a forte (*f*) dynamic.

Nr. 61 Praeld.

Musical notation for Nr. 61 Praeld. The piece is in G major (one sharp) and 2/4 time. It features a melodic line with a trill on the fifth measure and a triplet on the eighth measure. The notation includes various ornaments and slurs.

Nr. 62 Praeld.

Musical notation for Nr. 62 Praeld. The piece is in G major (one sharp) and 2/4 time. It features a melodic line with a trill on the fifth measure and a triplet on the eighth measure. The notation includes various ornaments and slurs.

Nr. 63 Etüde.

Moderato assai

Musical notation for Nr. 63 Etüde. The piece is in G major (one sharp) and 2/4 time. It features a melodic line with a trill on the fifth measure and a triplet on the eighth measure. The notation includes various ornaments and slurs. The lyrics "p cre - scen - do" are written below the notes. The piece includes dynamic markings such as *mf*, *p*, and *f*, and tempo markings such as *a tempo* and *rallent.*

Nr. 64 Praeld.

Two staves of musical notation for 'Nr. 64 Praeld.' in G major (one sharp) and 2/4 time. The piece features a melodic line with many slurs and ties, and a bass line with frequent sixteenth-note patterns.

Nr. 65 Praeld.

One staff of musical notation for 'Nr. 65 Praeld.' in G major (one sharp) and 2/4 time. It contains a melodic line with various ornaments and slurs.

Nr. 66 Etüde

Allegro giusto

Eight staves of musical notation for 'Nr. 66 Etüde' in G major (one sharp) and 3/8 time. The tempo is 'Allegro giusto'. The piece includes several triplet markings (indicated by a '3' in a circle) and dynamic markings such as *f* (forte), *cre* (crescendo), *scen* (scenariando), *do* (diminuendo), and *p* (piano). The notation is dense with sixteenth-note patterns and slurs.

Nr. 67 Praeld.

Nr. 68 Praeld.

Nr. 69 Etüde

Allegro moderato

*p* cre - - scen - - do *f*

di - mi - - nu - en - do

*p* cre - - scen - do *mf*

*p* cre - - scen -

- do - - - *f*

cre - - scen - do - *f*

Nr. 70 Praeld.

Nr. 71 Praeld.

Nr. 72 Etüde

Allegro



Nr. 73 Praeld.

Nr. 74 Praeld.

Nr. 75 Etüde  
Moderato

Nr. 76 Praeld.

Nr. 77 Praeld.

Nr. 78 Etüde

Allegro moderato

Nr. 79 Praeld.

Musical notation for Nr. 79 Praeld. The piece is in B-flat major and 3/8 time. It features a melodic line with various ornaments and a bass line with triplets.

Nr. 80 Praeld.

Musical notation for Nr. 80 Praeld. The piece is in B-flat major and 3/8 time. It features a melodic line with triplets and a bass line.

Nr. 81 Etüde  
Presto

Musical notation for Nr. 81 Etüde. The piece is in B-flat major and 12/8 time. It features a melodic line with various ornaments and a bass line. The piece includes dynamic markings such as *f*, *p*, *cre*, *scen*, *do*, *ritard.*, *fa tempo*, *mf*, *dim.*, and *p*.

Nr. 82 Praeld.

Two staves of musical notation for 'Nr. 82 Praeld.' in B-flat major, 2/4 time. The first staff begins with a treble clef, a key signature of two flats, and a common time signature. The melody features a series of eighth notes and quarter notes, with a triplet of eighth notes and a sixteenth-note figure. The second staff continues the melody with similar rhythmic patterns and includes a sixteenth-note figure.

Nr. 83 Praeld.

Two staves of musical notation for 'Nr. 83 Praeld.' in B-flat major, 2/4 time. The first staff begins with a treble clef, a key signature of two flats, and a common time signature. The melody is characterized by a series of eighth notes and quarter notes, with a triplet of eighth notes. The second staff continues the melody with similar rhythmic patterns and includes a sixteenth-note figure.

Nr. 84 Etüde

Allegro

Eleven staves of musical notation for 'Nr. 84 Etüde' in B-flat major, 2/4 time, marked 'Allegro'. The first staff begins with a treble clef, a key signature of two flats, and a common time signature. The piece is characterized by a series of eighth notes and quarter notes, with a triplet of eighth notes. The notation includes dynamic markings such as *f* (forte) and *p* (piano). The piece concludes with a final cadence.

Nr. 85 Praeld.

Musical notation for Nr. 85 Praeld. The piece is in G major (one sharp) and 2/4 time. It features a melodic line with various ornaments and a bass line with triplets. The notation includes slurs, ties, and dynamic markings.

Nr. 86 Praeld.

Musical notation for Nr. 86 Praeld. The piece is in G major (one sharp) and 2/4 time. It features a melodic line with various ornaments and a bass line with triplets. The notation includes slurs, ties, and dynamic markings.

Nr. 87 Etüde  
Vivace

Musical notation for Nr. 87 Etüde Vivace. The piece is in G major (one sharp) and 3/4 time. It features a melodic line with various ornaments and a bass line with triplets. The notation includes slurs, ties, and dynamic markings. The tempo is marked 'Vivace' and the starting dynamic is 'f'.

Musical notation for Nr. 87 Etüde Vivace. The piece is in G major (one sharp) and 3/4 time. It features a melodic line with various ornaments and a bass line with triplets. The notation includes slurs, ties, and dynamic markings.

Musical notation for Nr. 87 Etüde Vivace. The piece is in G major (one sharp) and 3/4 time. It features a melodic line with various ornaments and a bass line with triplets. The notation includes slurs, ties, and dynamic markings.

Musical notation for Nr. 87 Etüde Vivace. The piece is in G major (one sharp) and 3/4 time. It features a melodic line with various ornaments and a bass line with triplets. The notation includes slurs, ties, and dynamic markings. The dynamic marking 'mf' is present.

Musical notation for Nr. 87 Etüde Vivace. The piece is in G major (one sharp) and 3/4 time. It features a melodic line with various ornaments and a bass line with triplets. The notation includes slurs, ties, and dynamic markings. The lyrics 'cre - - - scen - - - do' are written below the notes.

Musical notation for Nr. 87 Etüde Vivace. The piece is in G major (one sharp) and 3/4 time. It features a melodic line with various ornaments and a bass line with triplets. The notation includes slurs, ties, and dynamic markings. The lyrics 'cre - - - scen - do' are written below the notes. The tempo marking 'rit.' and 'a tempo' are present.

Musical notation for Nr. 87 Etüde Vivace. The piece is in G major (one sharp) and 3/4 time. It features a melodic line with various ornaments and a bass line with triplets. The notation includes slurs, ties, and dynamic markings.

Musical notation for Nr. 87 Etüde Vivace. The piece is in G major (one sharp) and 3/4 time. It features a melodic line with various ornaments and a bass line with triplets. The notation includes slurs, ties, and dynamic markings.

Musical notation for Nr. 87 Etüde Vivace. The piece is in G major (one sharp) and 3/4 time. It features a melodic line with various ornaments and a bass line with triplets. The notation includes slurs, ties, and dynamic markings. The lyrics 'cre - - - scen - - - do' are written below the notes. The dynamic marking 'f' is present.

Nr. 88 Praeld.

Nr. 89 Praeld.

Nr. 90 Etüde

Allegro moderato

*mf*

*f* *p*

*p* *cresc.* *f*

*diminuendo* *p*

*cre - seen - do* *ff*

*mf* *f*

*diminuendo*

*Più mosso*

*p* *cre - seen - do* *ff*

Nr. 91 Praeld.

stringendo rit.

Musical notation for Nr. 91 Praeld. The piece is in G major (one sharp) and 3/4 time. It begins with a half note G4, followed by a triplet of eighth notes (A4, B4, C5), and another triplet of eighth notes (D5, E5, F#5). The melody continues with eighth and quarter notes, ending with a half note G5 marked *rit.*

Nr. 92 Praeld.

Musical notation for Nr. 92 Praeld. The piece is in G major (one sharp) and 3/4 time. It starts with a half note G4, followed by a series of eighth and quarter notes, including a triplet of eighth notes (A4, B4, C5). The melody concludes with a half note G5.

Nr. 93 Etüde

Allegretto

Musical notation for Nr. 93 Etüde. The piece is in G major (one sharp) and 3/4 time. It begins with a half note G4, followed by a series of eighth and quarter notes. The notation includes dynamic markings such as *f*, *mf*, and *f* throughout the piece. The melody is characterized by frequent eighth-note patterns and slurs.

Nr. 94 Praeld.

Musical notation for Nr. 94 Praeld. It consists of a single staff in treble clef with a key signature of three sharps (F#, C#, G#). The piece features a melodic line with various ornaments and slurs.

Nr. 95 Praeld.

Musical notation for Nr. 95 Praeld. It consists of a single staff in treble clef with a key signature of three sharps. It includes a triplet of eighth notes and various slurs.

Nr. 96 Etüde

Presto

Musical notation for Nr. 96 Etüde, first staff. It is in 6/16 time and begins with a piano (*p*) dynamic marking. The piece is characterized by rapid sixteenth-note passages.

Musical notation for Nr. 96 Etüde, second staff. It continues the rapid sixteenth-note passages. The lyrics "cre - - - sen - - -" are written below the staff.

Musical notation for Nr. 96 Etüde, third staff. It continues the rapid sixteenth-note passages. The lyrics "do di - - mi - nu - en - do" are written below the staff.

Musical notation for Nr. 96 Etüde, fourth staff. It continues the rapid sixteenth-note passages. A forte (*f*) dynamic marking is present at the beginning of this staff.

Musical notation for Nr. 96 Etüde, fifth staff. It continues the rapid sixteenth-note passages.

Musical notation for Nr. 96 Etüde, sixth staff. It continues the rapid sixteenth-note passages.

Musical notation for Nr. 96 Etüde, seventh staff. It includes a four-measure rest and a piano (*p*) dynamic marking.

Musical notation for Nr. 96 Etüde, eighth staff. It continues the rapid sixteenth-note passages.

Musical notation for Nr. 96 Etüde, ninth staff. It concludes the piece with a final flourish.



Nr. 97 Praeld.

Nr. 98 Praeld.

Nr. 99 Etüde

Allegro moderato

*mf* *p* *cre -*

*scen do f*

*dimi nu endo f p*

*rit. a tempo*

*ami nu en do mf*

*p cre - scen do f*

*ff dim*

Nr. 100 Praeld.

Musical notation for Nr. 100 Praeld. The piece is in G-flat major (two flats) and 3/4 time. It features a melodic line with various ornaments, including a mordent and a grace note. The notation includes a sixteenth-note triplet and a sixteenth-note sextuplet.

Nr. 101 Praeld.

Musical notation for Nr. 101 Praeld. The piece is in G-flat major (two flats) and 3/4 time. It features a melodic line with various ornaments, including a mordent and a grace note. The notation includes a sixteenth-note triplet.

Nr. 102 Etüde

Allegro risoluto

Musical notation for Nr. 102 Etüde, first staff. The piece is in G-flat major (two flats) and 3/4 time. It begins with a forte (*ff*) dynamic marking. The notation includes a sixteenth-note triplet.

Musical notation for Nr. 102 Etüde, second staff. The notation includes a sixteenth-note triplet.

Musical notation for Nr. 102 Etüde, third staff. The notation includes a sixteenth-note triplet.

Musical notation for Nr. 102 Etüde, fourth staff. The notation includes a sixteenth-note triplet.

Musical notation for Nr. 102 Etüde, fifth staff. The notation includes a sixteenth-note triplet.

Musical notation for Nr. 102 Etüde, sixth staff. The notation includes a sixteenth-note triplet.

Musical notation for Nr. 102 Etüde, seventh staff. The notation includes a sixteenth-note triplet.

Musical notation for Nr. 102 Etüde, eighth staff. The notation includes a sixteenth-note triplet and a forte (*ff*) dynamic marking.

Musical notation for Nr. 102 Etüde, ninth staff. The notation includes a sixteenth-note triplet.

Musical notation for Nr. 102 Etüde, tenth staff. The notation includes a sixteenth-note triplet.

Nr.103 Praeld.

Nr.104 Praeld.

Nr.105 Etüde  
Allegretto

*f*

*cre - scen - do*

*ff* *dimi - nu - en - do* *mf*

*cre - scen - do* *f*

Nr. 106 Praeld.

Nr. 107 Praeld.

Nr. 108 Etude

Allegro con brio

Nr. 109 Praeld.

Musical notation for Nr. 109 Praeld. The piece is in treble clef with a key signature of three sharps (F#, C#, G#) and a common time signature (C). It features a melodic line with various ornaments, including mordents and grace notes, and includes a sixteenth-note run in the middle section.

Nr. 110 Praeld.

Musical notation for Nr. 110 Praeld. The piece is in treble clef with a key signature of three sharps (F#, C#, G#) and a common time signature (C). It features a melodic line with various ornaments, including mordents and grace notes, and includes a trill (tr) in the final measure.

Nr. 111 Etüde

Allegro maestoso

Musical notation for Nr. 111 Etüde. The piece is in treble clef with a key signature of three sharps (F#, C#, G#) and a common time signature (C). It features a melodic line with various ornaments, including mordents and grace notes, and includes a trill (tr) in the final measure. The piece is marked with dynamic markings such as *f*, *mf*, and *f*, and includes tempo markings like *a tempo* and *rit.* (ritardando). The notation includes various rhythmic patterns, including sixteenth-note runs and triplet markings (3).

Nr.112 Praeld.

Nr.113 Praeld.

Nr.114 Etüde

Moderato assai

di - mi - nu - en - do *p*

Nr. 115 Praeld.

Musical notation for Nr. 115 Praeld. The piece is in G major (one sharp) and 3/4 time. It consists of two staves of music. The first staff contains the first six measures, featuring a melodic line with eighth and sixteenth notes, some beamed together, and a bass line with a prominent fifth finger (5) in the first measure. The second staff contains the next six measures, including a triplet of eighth notes and a trill (tr) in the final measure.

Nr. 116 Praeld.

Musical notation for Nr. 116 Praeld. The piece is in G major (one sharp) and 3/4 time. It consists of a single staff of music. The melody is characterized by eighth and sixteenth notes, often beamed in groups. There are several triplet markings (3) and a trill (tr) in the final measure.

Nr. 117 Etüde

Allegro vivace

Musical notation for Nr. 117 Etüde. The piece is in G major (one sharp) and 3/4 time. It consists of eight staves of music. The first staff begins with a forte (f) dynamic marking. The piece is a technical exercise featuring a continuous stream of eighth and sixteenth notes, often beamed in groups. There are several triplet markings (3) and accents (>) throughout. The dynamics vary, including mezzo-forte (mf) and forte (f). The piece concludes with a final measure containing a triplet of eighth notes.

Nr.118 Praeld.

Nr.119 Praeld.

Nr.120 Etüde

Allegro risoluto



Nr. 121 Praeld.

Nr. 122 Praeld.

Nr. 123 Etüde  
Moderato

## Nr. 124 Praeld.



## Nr. 125 Praeld.



## Nr. 126 Etüde

Allegro giusto



Nr. 127 Praeld.

Two staves of musical notation for Nr. 127 Praeld. The first staff begins with a treble clef, a key signature of three flats (B-flat, E-flat, A-flat), and a common time signature. The melody features a series of eighth notes with a slur, followed by a half note. The second staff continues the melody with several triplet markings (indicated by a '3' above the notes) and a trill (tr) at the end.

Nr. 128 Praeld.

Two staves of musical notation for Nr. 128 Praeld. The first staff begins with a treble clef, a key signature of three flats, and a common time signature. The melody consists of eighth notes with a slur. The second staff continues the melody and ends with a trill (tr).

Nr. 129 Etüde

Allegro maestoso

Multiple staves of musical notation for Nr. 129 Etüde. The first staff begins with a treble clef, a key signature of three flats, and a common time signature. It starts with a dynamic marking of *ff* and includes triplet markings. The second staff continues with dynamic markings of *f*, *p*, and *f*. The third staff features trills (tr) and dynamic markings of *f*. The fourth staff includes trills (tr) and dynamic markings of *f*. The fifth staff has a *rallent.* marking followed by *ff* and triplet markings, with the tempo marking *a tempo* above. The sixth staff continues with triplet markings. The seventh staff features a key signature change to two flats (B-flat, E-flat) and triplet markings. The eighth staff continues with triplet markings.

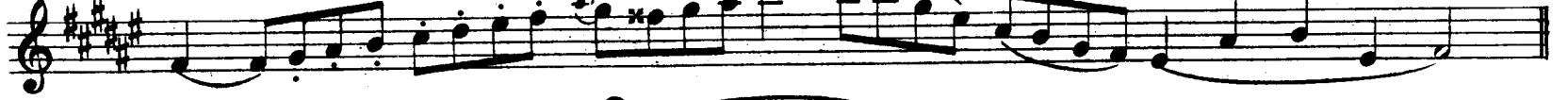
Nr. 130 Praeld.

Nr. 131 Praeld.

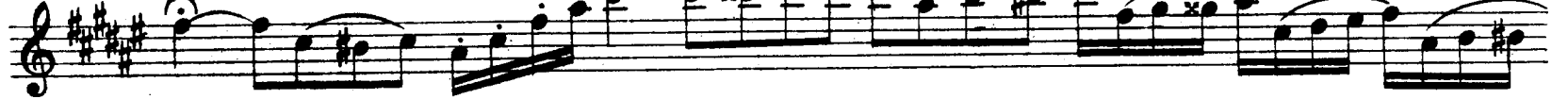
Nr. 132 Etüde

Allegro ma non troppo

Nr. 133 Praeld.



Nr. 134 Praeld.



Nr. 135 Etüde

Allegretto



Nr. 136 Praeld.

Nr. 137 Praeld.

Nr. 138 Etüde  
Adagio

Nr. 139 Praeld.

Musical notation for Nr. 139 Praeld. The piece is in G major (one sharp) and 2/4 time. It features a melodic line with a trill and a triplet.

Nr. 140 Praeld.

Musical notation for Nr. 140 Praeld. The piece is in G major (one sharp) and 2/4 time. It features a melodic line with a trill and a triplet.

Nr. 141 Etüde

Allegro tranquillo

Musical notation for Nr. 141 Etüde, first staff. The piece is in G major (one sharp) and 2/4 time. It features a melodic line with a trill and a triplet. The dynamic marking is *f*.

Musical notation for Nr. 141 Etüde, second staff. The piece is in G major (one sharp) and 2/4 time. It features a melodic line with a trill and a triplet.

Musical notation for Nr. 141 Etüde, third staff. The piece is in G major (one sharp) and 2/4 time. It features a melodic line with a trill and a triplet. The dynamic marking is *p crescendo poco a poco*.

Musical notation for Nr. 141 Etüde, fourth staff. The piece is in G major (one sharp) and 2/4 time. It features a melodic line with a trill and a triplet. The dynamic marking is *dim.*

Allegro giocoso

Musical notation for Nr. 141 Etüde, fifth staff. The piece is in G major (one sharp) and 3/8 time. It features a melodic line with a trill and a triplet. The dynamic marking is *mf*.

Musical notation for Nr. 141 Etüde, sixth staff. The piece is in G major (one sharp) and 3/8 time. It features a melodic line with a trill and a triplet.

Musical notation for Nr. 141 Etüde, seventh staff. The piece is in G major (one sharp) and 3/8 time. It features a melodic line with a trill and a triplet.

Musical notation for Nr. 141 Etüde, eighth staff. The piece is in G major (one sharp) and 3/8 time. It features a melodic line with a trill and a triplet. The dynamic marking is *rit.*

Musical notation for Nr. 141 Etüde, ninth staff. The piece is in G major (one sharp) and 3/8 time. It features a melodic line with a trill and a triplet. The dynamic marking is *a tempo* and *p*.

Musical notation for Nr. 141 Etüde, tenth staff. The piece is in G major (one sharp) and 3/8 time. It features a melodic line with a trill and a triplet.

Nr. 142 Praeld.

Nr. 143 Praeld.

Nr. 144 Etüde

Allegro moderato

(Ossia oder)

Cantabile

Tempo I