

29364

Mrs. M. Emma Heisen
gewidmet

Charakterstücke

für

PIANOFORTE

VON

Carl Banck.

Op. 72.

HEFT I.

Pr. No. 2.

Waldesträumerei.

Lied.

Ballade.

Kirchgang.



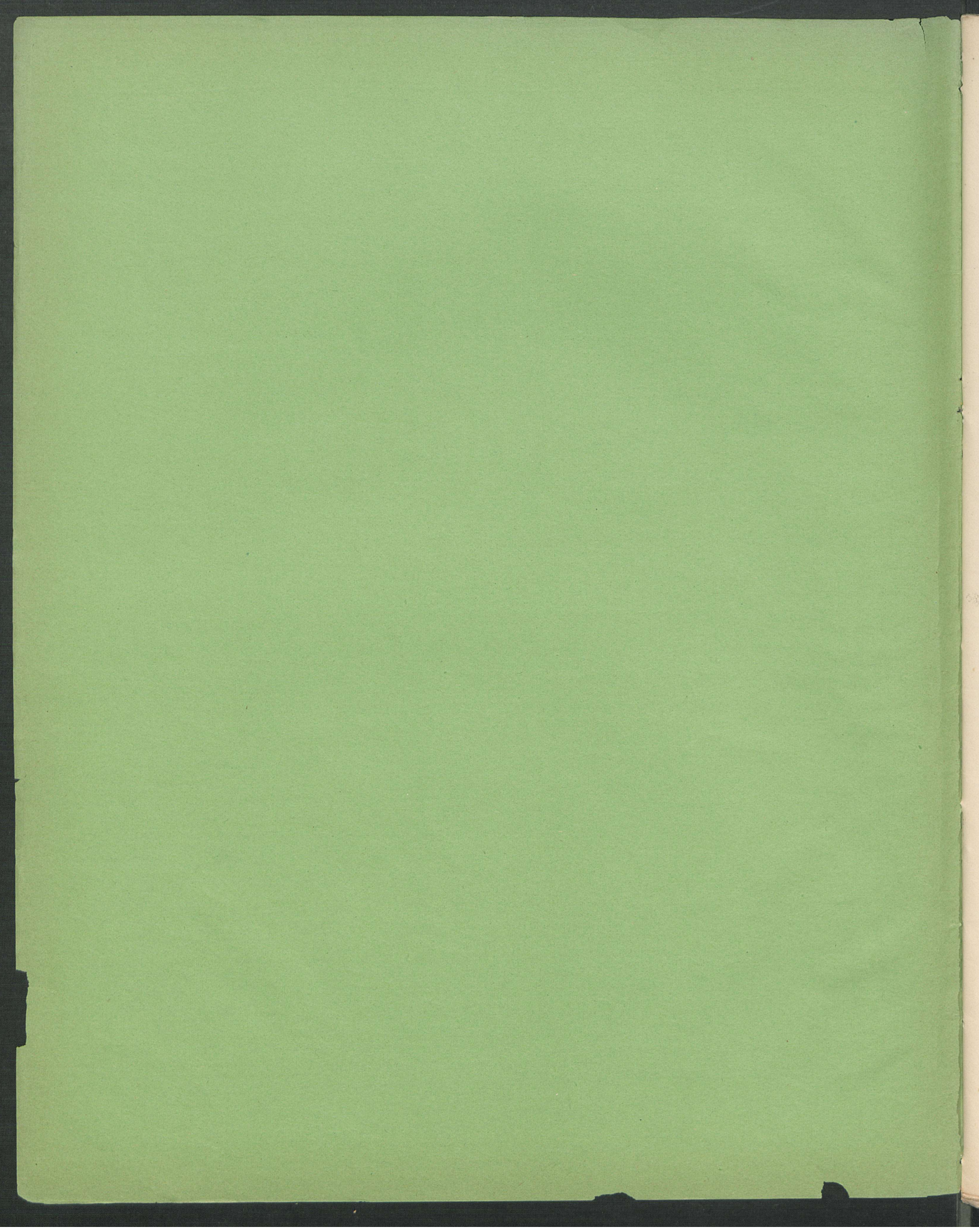
*Eigenthum des Verlegers.
Eingetragen in das Vereins-Archiv.*

LEIPZIG, FR. KISTNER.

(K.K. Oesterr. Goldene Medaille.)

4957. 4958. 4959.

Preis zusammen fünf Mark.



29364

Miss M. Emma Hansen
gewidmet.

Charakterstücke

für

PIANOFORTE

VON

Carl Banck.

Op. 72.

HEFT I.

Pr. No. 2.

Waldesträumerei.
Lied.
Ballade.
Kirchgang.



*Eigenthum des Verlegers.
Eingetragen in das Vereins-Archiv.*

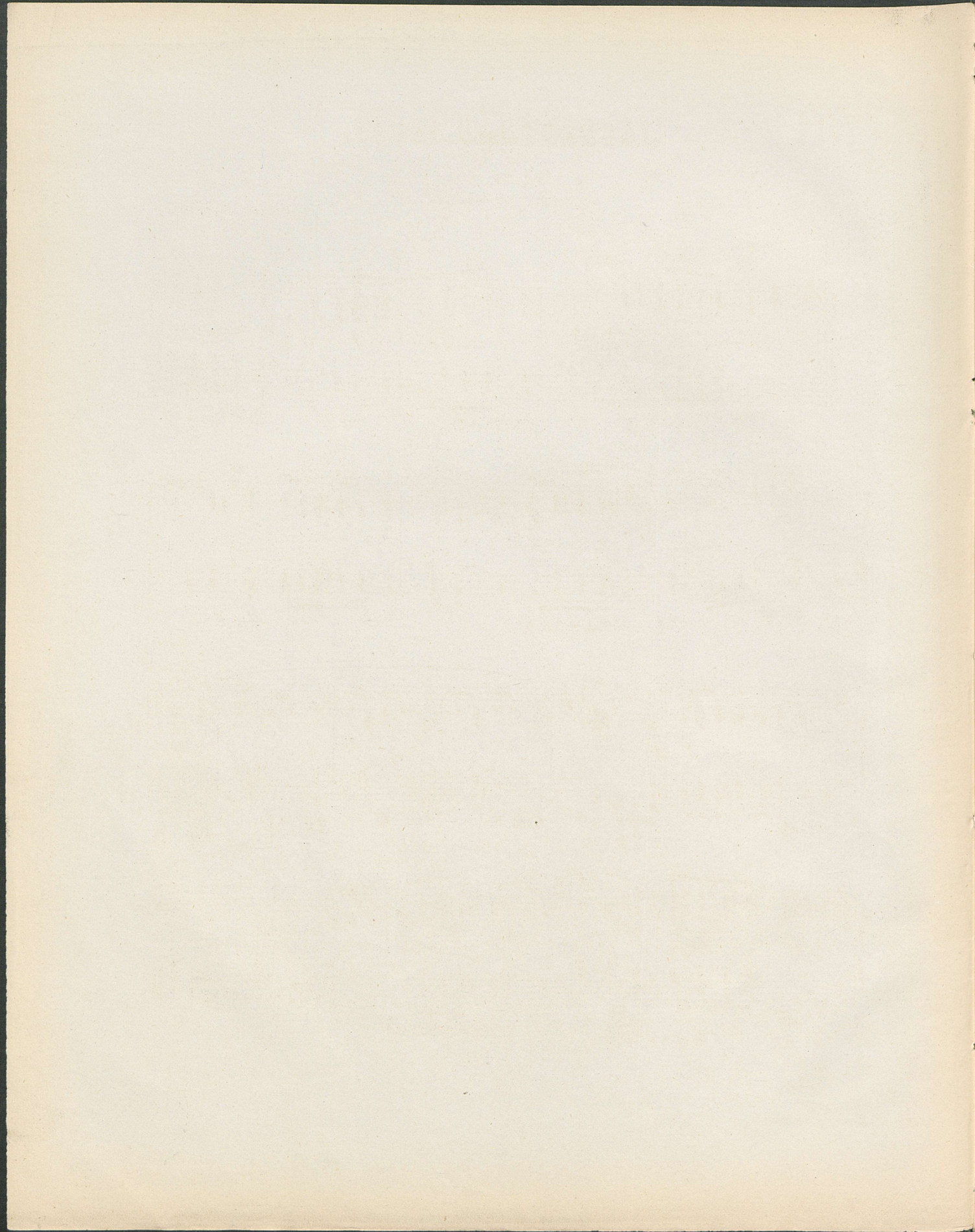
LEIPZIG, FR. KISTNER.
(K.K. Oesterr. goldene Medaille.)



4957. 4958. 4959.

Verlag: Kistner, Carl, Leipzig.

[1878]



WALDESTÄUMEREI.



Carl Banck Op. 72 Heft 1.

Lento.
con espressione

p *f* *p*

fz *cresc.* *p*

f *mf* *dim.*

pp *cresc.* *f* *sf* *p* *accelerando*

La. * La.*La.* La. * La.*La. *

La.* La. *La.*La.* La.* La.*

La.* La.³ La. * La. * La. * La. *

La. * La.* La.* La.*La.*La.*

Allegro agitato.

mf fz f

con Ped.

Detailed description: This system contains the first five measures of the piece. The right hand starts with a half rest followed by eighth notes, while the left hand plays a steady eighth-note accompaniment. Dynamics range from mezzo-forte (mf) to fortissimo (f). A 'con Ped.' marking is placed below the first measure.

fz f cresc.

Detailed description: This system contains measures 6-10. The right hand features a triplet of eighth notes in measure 8. The left hand continues its accompaniment. Dynamics include fortissimo (f), fortissimo-zwischen (fz), and a crescendo (cresc.) marking.

f

Detailed description: This system contains measures 11-15. The right hand has a melodic line with slurs and accents. The left hand accompaniment becomes more complex with chords. The dynamic is fortissimo (f).

f sf f ed appassionato

Detailed description: This system contains measures 16-20. The right hand has a more active melodic line. The left hand accompaniment features chords with slurs. Dynamics include fortissimo (f), sforzando (sf), and 'f ed appassionato'.

fz f

Detailed description: This system contains measures 21-25. The right hand has a melodic line with slurs and accents. The left hand accompaniment continues with chords. Dynamics include fortissimo-zwischen (fz) and fortissimo (f).

fz sf

Detailed description: This system contains the final five measures (26-30). The right hand has a melodic line with slurs and accents. The left hand accompaniment continues with chords. Dynamics include fortissimo-zwischen (fz) and sforzando (sf).

f *mf* *ff* *p dim. ritard.* *pp*

Tempo I.

pp *f* *mf*

f *p* *cresc.* *p*

mf *dim.*

f *ff* *pp*

La. * *La.* * *La*La.* * *La.* * *La.* *

p *rit.* *dim.* *pp* *rit.*

*La.*La.** *La.** *La.** *La.**

LIED.

Andantino con moto.
espressivo

mf sempre legato e ben tenuto

con Ped.

cresc.

f

Ped. ✱

p

più f

pp

più animato

cresc.

f

dim. rit.

mf

Tempo I.

cresc. con affetto

dim. *più f* *animato*

cresc.

a tempo *dim.* *rit.*

cresc. con affetto *f* *mf*

p *cresc.* *slargando f* *ten. p* *ritard.* *pp*

Qd. * Qd. * Qd. * Qd.* Qd. *

BALLADE.

Moderato. *fa piacere* (Refrain) *mf legato ed armonioso*

Ad. *p* *Ad.*

Ad. *Ad.* *Ad.* *Ad.*

marc. *poco più moto con anima* *ten. mf ben cantando* *f* *Ad.* *con Ad.*

slargando

risoluto ed animato *più f* *marc.* *cresc.*

sfz.
molto f acceler.
slargando
poco ritard. dim.

a tempo
più moderato
ff
f
p
pp
rit.
mf
Red. p * *Red.* *

Red. * *Red.* * *Red.* * *Red.* *

mare.
più moto agitato ed affettuoso
f
più f
Red. * *con Red.*

cresc. sempre

f
sfz.
Red. *

con forza

ff *f* *f*

Ad. * *Ad.* * *Ad.* *

p *f* *mf* *dim. ritard.* *pp morendo*

Ad. * *Ad.* * *Ad.* * *Ad.* * *Ad.* *

moderato

f *pp* *pp*

Ad. * *Ad.* * *Ad.* *

pp *mf* *pp*

Ad. * *Ad.* * *Ad.* *

marc. *afflito* *mf* *f*

Ad. * *Ad.* *

slargando *cresc.*

risoluto ed animato

più f

accel. *sfz* *sfz* *staccando*

ff

ditard. dim. *a tempo* *ff* *p* *mf* *p ritard. pp*

in tempo

f

*Ad. 7 7** *Ad. 7 7** *Ad.* *** *Ad. 7 7**

p *cresc.*

*Ad. 7 7** *Ad. 7 7** *Ad.* ***

più moto ed energico *sempre forte*

Ad *** *Ad* ***

KIRCHGANG.

Andantino con moto.

con delicatezza

p

And. * *And.* * *And.*

* *And.* * *And.* * *And.*

sostenuto

mf legato

* *And.* * *And.* *

e molto espressivo

f

con And.

dim. *mf*

più e rinforz.

con affetto ed allargando

f *cresc.* *f* *decresc.*

ff m.g. *m.g.* *rinfz.* *dim.* *p*

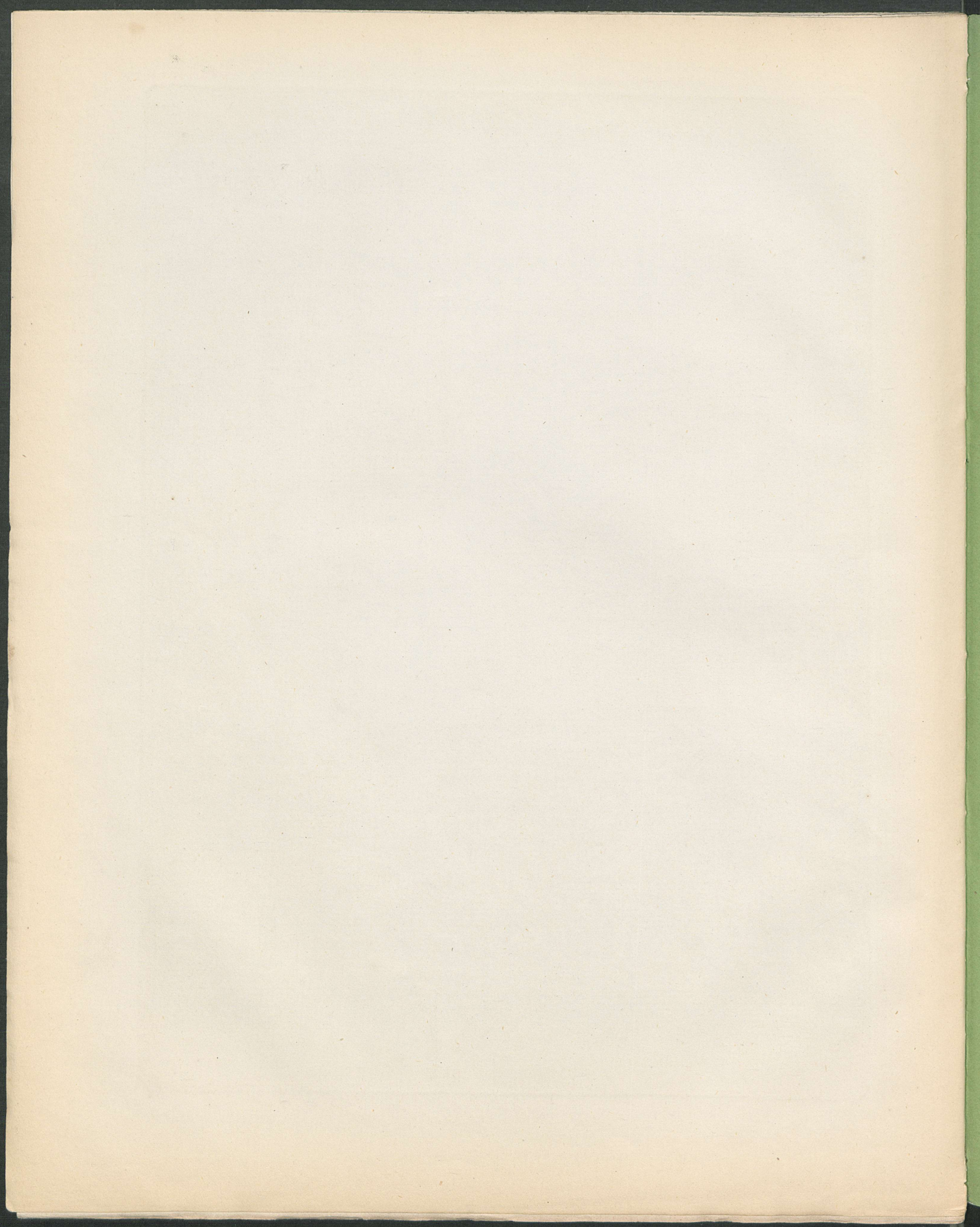
ritard. e smorzando *tempo primo*

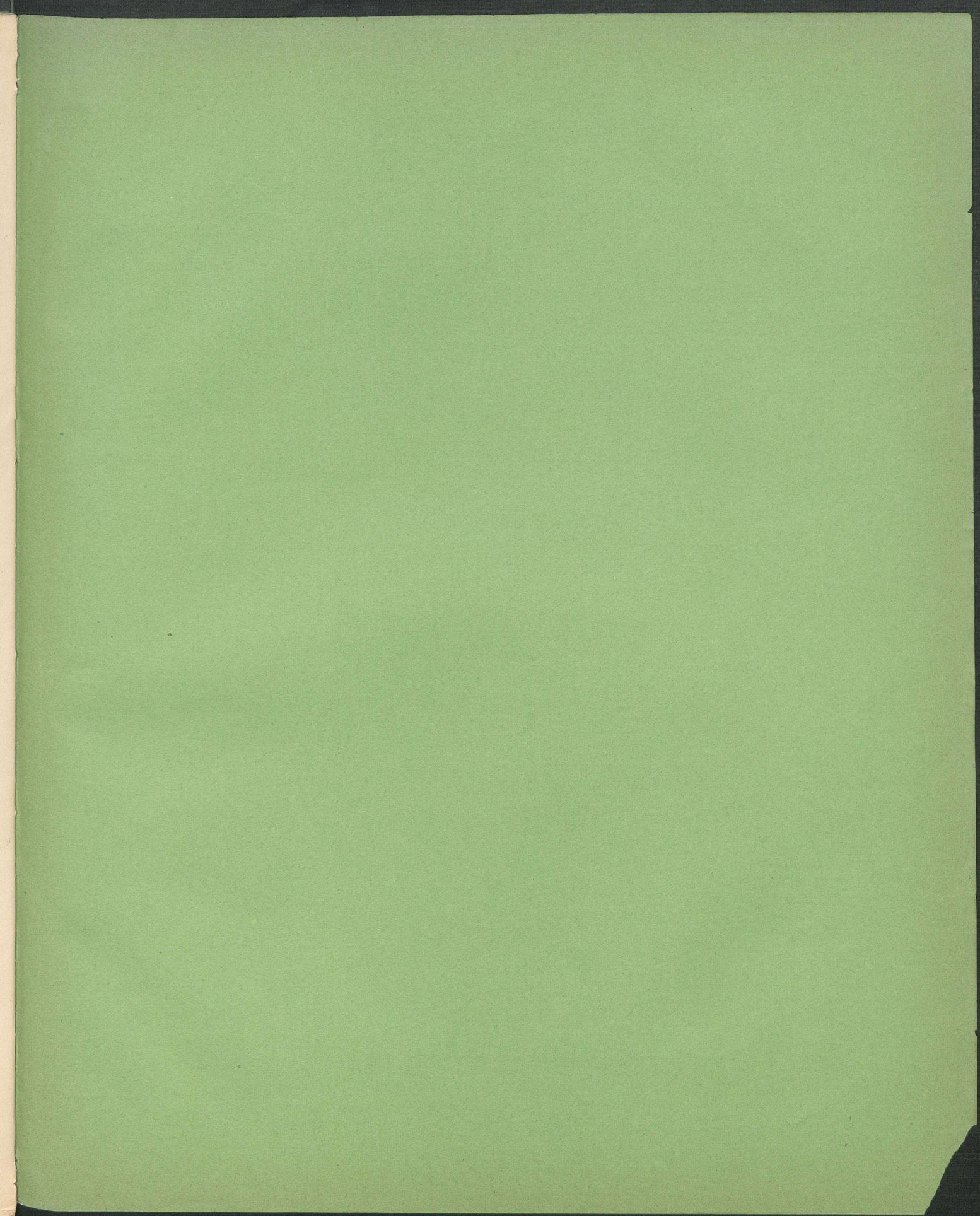
pp *p* *Ld.* *** *Ld.*

p *** *Ld.** *** *Ld.** *** *Ld.**

dim. *ritard. e diluendo* *ppp*

Ld. *** *Ld.** *Ld.* *** *Ld.* ***





1000