

Mus 2 a
ms

1

Pa.

~~No. 2. / b. f. III.~~

Overture.
2.

Violino 1.
Violino 2.
Oboe 1.
Oboe 2.
Corno 1
Corno 2
Viola.
et
Basso.

fol. (9)

Del Sigz
Abel.

Allegro assai.



GROSSHERZOGTUM
HESSISCHE
HOEBIBLIOTHEK.

Basso

Overture
Allegro
assai.

Handwritten musical score for Bassoon, first section: Overture Allegro assai. The score consists of ten staves. The first staff begins with a treble clef, a common time signature, and a 3/4 time signature. The music is written in a key with one sharp (F#). The first staff contains the main melodic line. The second staff is a bass line starting with a piano (p) dynamic. The third staff continues the bass line with a crescendo and fortissimo (f) dynamic. The fourth staff contains two first endings, marked 1. and 2. The fifth and sixth staves continue the melodic and bass lines. The seventh staff begins with a fortissimo (f) dynamic. The eighth and ninth staves continue the bass line with a crescendo and fortissimo (f) dynamic. The tenth staff concludes the section with a double bar line.

Andante
mezzo forte

Handwritten musical score for Bassoon, second section: Andante. The score consists of five staves. The first staff begins with a treble clef, a common time signature, and a 3/4 time signature. The music is written in a key with two flats (Bb). The first staff contains the main melodic line. The second staff is a bass line starting with a mezzo forte dynamic. The third staff continues the bass line with a crescendo and fortissimo (f) dynamic. The fourth and fifth staves continue the melodic and bass lines with various dynamics including mezzo forte, piano (p), and fortissimo (f). The section concludes with a double bar line.

Abel,

Violino 1.

1.a.

Overture
allegro
assai.

volti

Andante

Handwritten musical score for the first section, marked *Andante*. It consists of five staves of music. The first staff begins with the tempo marking *Andante* and the dynamic marking *mezzo forte*. The second staff includes *mez. for* and *crescendo il for. p.*. The third staff features *crescendo il for.*. The fourth staff has *p. mez. for*. The fifth staff is marked *forte* and ends with the instruction *cresc.*. The music is written in a treble clef with a 3/4 time signature.

Allegro.

Handwritten musical score for the second section, marked *Allegro.*. It consists of five staves of music. The first staff is in a 2/4 time signature. The second staff has a *p.* dynamic marking. The third and fourth staves contain complex rhythmic patterns with various dynamic markings like *f.* and *pp.*. The fifth staff concludes with a double bar line and a decorative flourish.

Abel
Overture.
Allegro
affai.

Violino 2.

3
1.a.

volti.

Andante.

Handwritten musical score for the *Andante* section, consisting of five staves of music. The notation includes various dynamics and performance instructions:

- Staff 1: *mezzo forte*, *crescendo il for*, *p.*, *mez: for*
- Staff 2: *f.*, *mez: f.*
- Staff 3: *cres: il for*, *p. f*
- Staff 4: *mez: for*, *cres: il for*, *p.*, *cres il for*
- Staff 5: Ends with a double bar line.

Allegro.

Handwritten musical score for the *Allegro* section, consisting of five staves of music. The notation includes various dynamics and performance instructions:

- Staff 1: *p.*, *f.*
- Staff 2: *f.*, *p.*, *f.*, *p.*
- Staff 3: *f.*, *f.*, *p.*
- Staff 4: *f.*
- Staff 5: Ends with a double bar line and a decorative flourish.

Abel,

Oboe 1.

5 1.a.

Overture
allegro
assai.

Handwritten musical notation on aged paper, consisting of approximately 20 staves. The notation is very faint and difficult to read, appearing as light grey or brownish marks on the yellowed paper. The paper shows signs of age, including discoloration and some foxing.



Abel,

Oboe. 2.

6 1a.

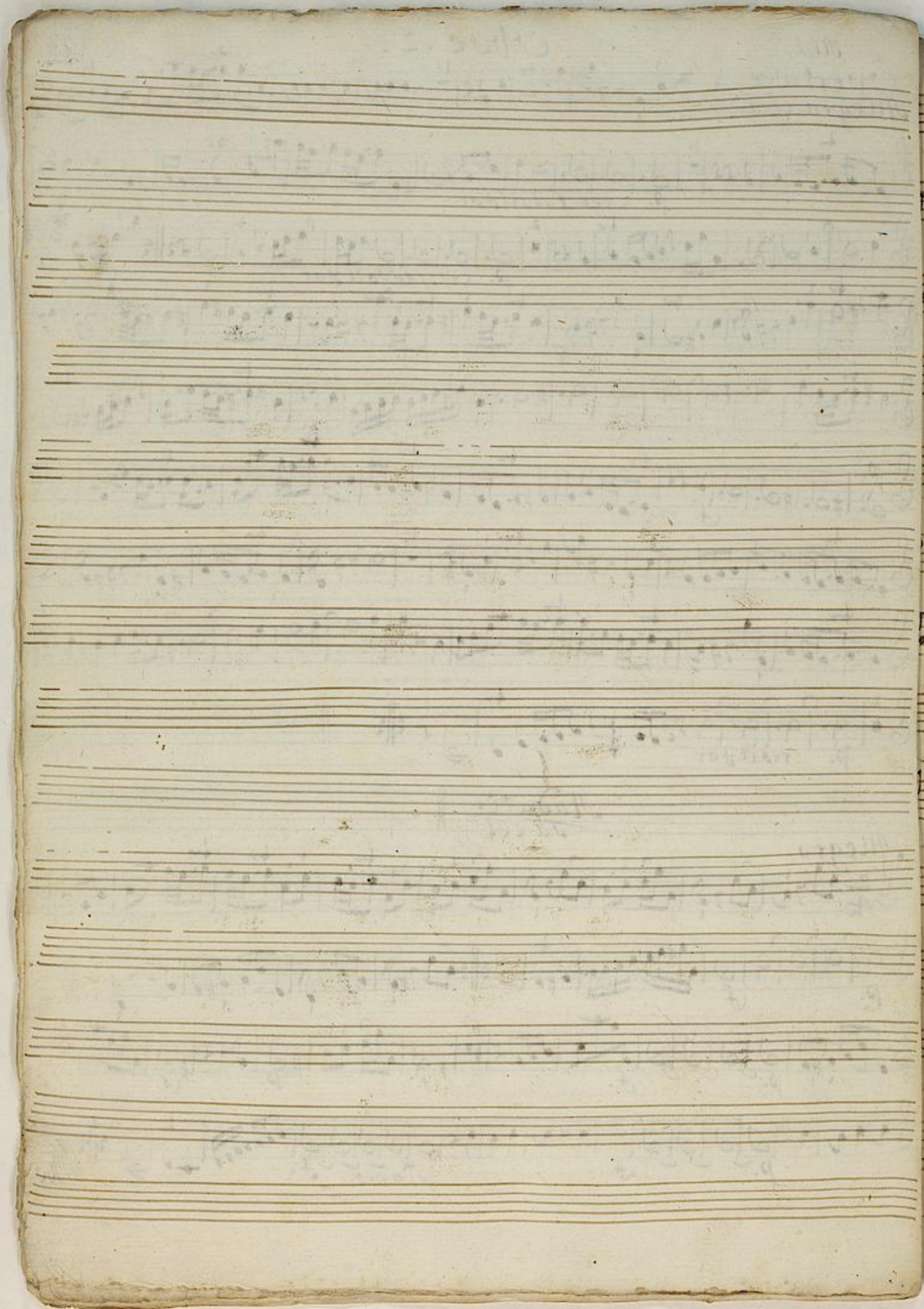
Overture
Allegro assai.

Handwritten musical score for Oboe 2, first system. It consists of ten staves of music. The first staff begins with a treble clef, a 3/4 time signature, and a key signature of one sharp (F#). The music is written in a cursive hand. The first two staves have the instruction "p. crescendo il for" written below them. The piece concludes with a double bar line and a repeat sign.

Andate.
Tacet

Allegro.

Handwritten musical score for Oboe 2, second system. It consists of four staves of music. The first staff begins with a treble clef, a 2/4 time signature, and a key signature of one sharp (F#). The music is written in a cursive hand. The first three staves have a "p." (piano) dynamic marking below them. The fourth staff has a "pianissimo" (pianiss.) dynamic marking. The piece concludes with a double bar line and a repeat sign.

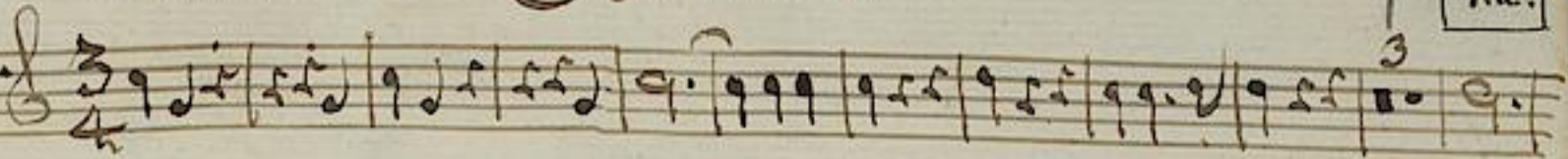


Abel, C. Horns.

Corno 1.

7 1.a.

Overture
allegro
assai.



Rit.

p.

f

10

p.

f.

p.

f

Andate
Tacet



p.

f

p.

f

p.

f

p.

f

p.

f

p.

f

p.

f

p.

f

p.

f

p.

f

p.

f

p.

f

p.

f



III C. H. 1111

Handwritten musical notation on ten staves. The notation is extremely faint and illegible, appearing as light grey or brownish marks on the aged paper. The staves are arranged vertically, with some faint clefs and note heads visible.

Abel, C. Horns, Corno. 2.

Operture
Allegro
assai.

Andante.
Tacet.

Faint handwritten musical notation on aged paper, consisting of approximately 10 staves. The notation is mostly illegible due to fading and bleed-through from the reverse side of the page.



Allegro.

Handwritten musical score on four staves. The first staff begins with a treble clef, a 2/4 time signature, and a key signature of one sharp (F#). The music consists of a single melodic line with various dynamics including *p.*, *f.*, and *pianis:*. The piece concludes with a double bar line and a flourish. The remaining staves are empty.

