

CONCERT

DE

SIMPHONIES

Pour les Violons, Flutes, et Hautbois.

PAR M.^R AUBERT.

Ordinaire de la chambre du Roy, et de l'Academie
Royale, Intendant de la Musique de

S. A. S. MONSEIGNEUR LE DUC.

Gravés par M.^{de} Leclair.

III.^e SUITE.

Prix en blanc les 3. parties séparées 3.th 12.^{is}



A PARIS,

Chez { L'auteur, rue S.^t honoré vis à vis la rue de Grenelle.
Le S.^t Boivin, M.^d rue S.^t honoré à la Règle D'or.
Le S.^t Leclerc, M.^d rue du Roule à la Croix D'or.

AVEC PRIVILEGE DU ROY.

Vm^z. 1160 (3)

TROISIEME SUITE. ¹

Basse Continue.

Ouverture.

Musical notation for the Ouverture section, consisting of three staves. The notation includes various rhythmic values (quarter, eighth, and sixteenth notes), rests, and accidentals. Fingerings are indicated by numbers 1-5 above the notes. The first staff begins with a treble clef and a 2/4 time signature. The second and third staves continue the piece with similar notation and include a 4/4 time signature.

Trio.

Musical notation for the Trio section, consisting of seven staves. The notation includes various rhythmic values, rests, and accidentals. Fingerings are indicated by numbers 1-5 above the notes. The section begins with a treble clef and a 2/4 time signature. The notation is dense with sixteenth and thirty-second notes, and includes several trills and grace notes. The piece concludes with a double bar line and repeat signs.

2

1^{er} Rondeau.

Basse

Legerem^t.

Fin.

2^e R.

Trio.

Fin.

Basse

The first system consists of two staves of music. The top staff begins with a treble clef, a key signature of two flats (B-flat and E-flat), and a 2/4 time signature. It contains a sequence of notes with various fret numbers (6, 7, 2, 6, 5, 4, 7, 6, 5, 6) and fingerings (3, 6). The bottom staff continues the melody with fret numbers (6, 5, 4, 3, 6, 5, 4, 3, 6, 4, 3) and fingerings (6, 4, 3). The system concludes with a double bar line and a Roman numeral II.

1^{er} Rigaudon.

The second system continues the piece. It features a treble clef, two flats, and a 2/4 time signature. The notation includes notes with fret numbers (6, 5, 7, 6, 4, 4x, 6, 6, 7, 7, 6) and fingerings (6, 6). A section of the music is marked with a repeat sign and the instruction "On reprend le 1^{er}". The system ends with a double bar line and a Roman numeral III.

2^e R.

Trio.

The third system continues the piece. It features a treble clef, two flats, and a 2/4 time signature. The notation includes notes with fret numbers (6, 4, 3, 6, 4, 3, 6, 4, 3, 7, 7, 7, 6, 5, 7) and fingerings (6, 7). A section of the music is marked with a repeat sign and the instruction "On reprend le 1^{er}". The system ends with a double bar line and a Roman numeral III.

On reprend le 1^{er}

Basse

5

1^{er} Menuet.

On reprend la 1^{er}

2^e M.

On reprend le 1^{er}

1^{er} Gavotte.

On reprend la 1^{er}

2^e G.

On reprend la 1^{er}

6

Basse

1.^{re} Sicilienne.

Fin.

2.^e S.

Trio.

On reprend la 1.^{re}

Chaconne. 6 *Basse*

First staff of music with notes and fingerings (6, 7, 8, 7, 6, 7, 8, 7, 2, 5, 6, 5, 7, 7).

Second staff of music with notes and fingerings (2, 5, 6, 5, 7, 7, 5, x, 6, 5, 5).

Third staff of music with notes and fingerings (5, x, 6, 5, 5, 5, x, 6, 6, 5, 4, 3).

Fourth staff of music with notes and fingerings (5, x, 6, 6, 5, 4, 3, 6, 7, 6, 7, 6).

Fifth staff of music with notes and fingerings (7, 8, 7, 6, 7, 3, 7, 6, 5, 7, 7, 6, 7, 3, 7, 6, 5, 7, 7). Includes the word *Trio.*

Sixth staff of music with notes and fingerings (6, 7, 8, 7, 6, 7, 8, 7). Includes the word *fort*.

Seventh staff of music with notes and fingerings (5, 7, 5, x, 7, 5, 7, 4, 6, 5, 7, 4, 3). Includes the word *Trio.*

Eighth staff of music with notes and fingerings (5, 8, 7, 6, 9, 6, 7, 5, 7, 9, 8, 7, 6, 7, 5, 7, fort, 6, 7, 6, 7, x, 7, 6).

Ninth staff of music with notes and fingerings (7, 6, 7, x, 7, 6, 5, x, 7, 5, 6, x).

Tenth staff of music with notes and fingerings (6, 5, x, 7, 5, 6, x, 6, 5, 5, 6, 5, 5).

Basse

tres doux. *fort*

Fin de la 3^e. Suite.

CONCERT

DE

SIMPHONIES

Pour les Violons, Flutes, et Hautbois.

PAR M.^R AUBERT.

Ordinaire de la chambre du Roy, et de l'Academie
Royale, Intendant de la Musique de

S. A. S. MONSEIGNEUR LE DUC.

Gravés par M.^{de} Le clair.

III.^e SUITE.

Prix en blanc les 3. partie séparée 3.th 12.^s



A PARIS,

Chez { L'auteur, rue S.^t honoré vis a vis la rue de Grenelle.
Le S.^t Boivin, M.^d rue S.^t honoré à la Règle D'or.
Le S.^t Leclerc, M.^d rue du Roule à la Croix D'or.

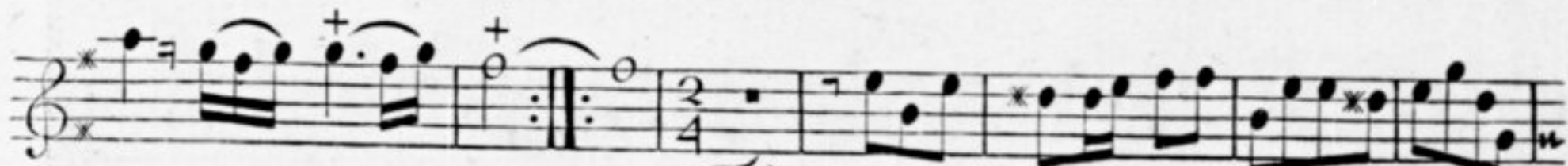
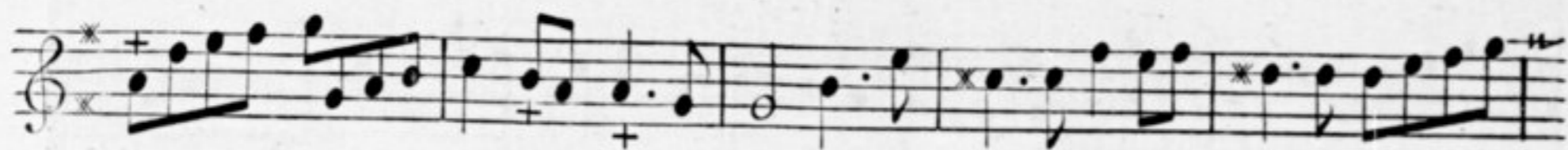
AVEC PRIVILEGE DU ROY.

Vm 7. 1160. (3)

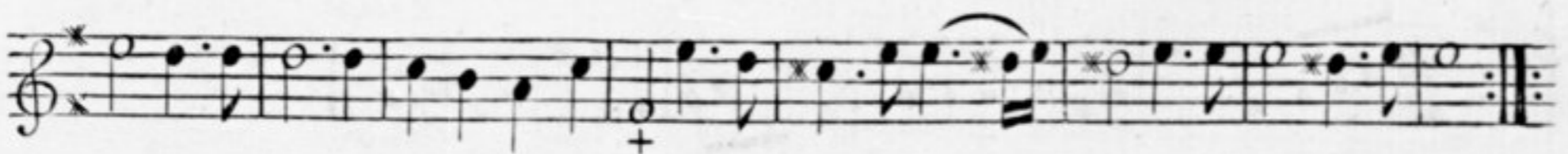
TROISIEME SUITE. ¹

2^e. Dessus.

Ouverture.



Trio.



1.^{er} Rondeau.

Legerem.^t ☼

Fin.

2.^e R.

Trio.

Fin.

2^e Dessus.

The first system consists of four staves of music. The first staff begins with a treble clef, a key signature of two sharps (F# and C#), and a common time signature. The music is written in a single melodic line with various note values and rests. The second and third staves continue the melodic line, with some notes marked with a '+' sign. The fourth staff concludes the system with a double bar line and repeat dots.

1^{er} Rigaudon. On reprend le 1^{er}

The first Rigaudon section consists of four staves of music. The first staff begins with a treble clef, a key signature of two sharps, and a 2/4 time signature. The music is written in a single melodic line. The second and third staves continue the melodic line, with some notes marked with a '+' sign. The fourth staff concludes the section with a double bar line and repeat dots.

2^e R. On reprend le 1^{er}

Trio.

The second Rigaudon section consists of two staves of music. The first staff begins with a treble clef, a key signature of two sharps, and a 2/4 time signature. The music is written in a single melodic line. The second staff concludes the section with a double bar line and repeat dots.

4 Sarabande.

2.^e Dessus.



1.^{er} Badine.



2.^e B.



Trio.



2.^e Dessous.

1.^{er} Menuet.

On reprend la 1.^{er} B.

2.^e M.

Trio.

1.^{re} Gavotte.

On reprend le 1.^{er}

Trio. très tendrem^t.

2.^e G.

On reprend la 1.^{re}

1^{er} Sicilienne

2^e Devote.

6/8

Fin.

2^e S. 6/8

Trio.

Fin.

Chaconne

2^e Dessus

7

Handwritten musical score for Chaconne, 2^e Dessus, page 7. The score consists of ten staves of music in treble clef with a key signature of three sharps (F#, C#, G#) and a 3/4 time signature. The music is a chaconne, characterized by a repeating rhythmic pattern. The score includes various musical notations such as slurs, accents, and dynamic markings. The word "Trio." appears on the third and seventh staves, and "tous." appears on the fifth and eighth staves. The page number "7" is in the top right corner.

The musical score for the 2nd Soprano part on page 8 consists of ten staves of music. The notation is in treble clef with a key signature of one sharp (F#). The music is highly rhythmic, featuring many sixteenth and thirty-second notes. It includes various performance markings such as '+' above notes, '*' above notes, and 'deux' above a measure. The word 'Trio.' is written below the fourth staff. The page ends with a double bar line and the number '11'.

2.^e Dessous.

tres doux *fort.*

doux

Fin de la 3^e Suite.

CONCERT

DE

SIMPHONIES

Pour les Violons, Flutes, et Hautbois.

PAR M.^R AUBERT.

Ordinaire de la chambre du Roy, et de l'Academie
Royale, Intendant de la Musique de

S. A. S. MONSEIGNEUR LE DUC.

Gravés par M.^{de} Leclair.

III.^e SUITE.

Prix en blanc les 3. partie séparée 3.th 12.^s



A PARIS,

Chez { L'auteur, rue S.^t honoré vis a vis la rue de Grenelle.
Le S.^r Boivin, M.^d rue S.^t honoré à la Règle D'or.
Le S.^r Leclerc, M.^d rue du Roule à la Croix D'or.

AVEC PRIVILEGE DU ROY.

Vm^z. 1160 (3)

CATALOGUE

des Oeuvres de M. Aubert.

1. *Premier Livre de Sonates pour les Violons, et les Flûtes, avec la Basse..* 8.^{tt}
2. *Deuxieme Livre de Sonates pour les Violons, et les Flûtes avec la Basse..* 8.
3. *Troixieme Livre de Sonates pour les Violons, et les Flûtes avec la Basse...* 8.
4. *Quatrieme Livre de Sonates pour les Violons, les Trois dernieres sont par accords, et toutes les autres sont propre pour la Flûte, avec la Basse....* 8.
5. *La Reine des peris, Opera en cinq Acte et un Prologue.....* 12.
6. *Le Ballet de Chamtilly, fait pour le Roy au retour de Reims.....* 8.
7. *Une Suite pour deux Flûtes ou pour deux Violons sans Basse.....* 1.15.
8. *2^{re} Suite de Concert de Simphonie en trio pour les Violons, Flûtes, et Hautbois ..* 3.12.
9. *Deuxieme Suite de Concert de Simphonie en trio p^r les Violons, Flûtes, et Hautbois .* 3.12.
10. *Troixieme Suite de Concert de Simphonie en trio p^r les Violons, Flûtes, et Hautbois..* 3.12.
11. *Quatrieme Suite de Concert de Simphonie en trio p^r les Violons, Flûtes, et Hautbois..* 3.12.
12. *Cinquieme Suite de Concert de Simphonie en trio p^r les Violons, Flûtes, et Hautbois..* 3.12.
13. *Sixieme Suite de Concert de Simphonie en Trio pour les Muzettes, Vielles Violons, Flutes, et Hautbois.....* 3.12.

TROISIEME SUITE.

1

Premier Dessus

Ouverture

Trio.

ambert

1^{er} Rondeau.

Légerement

Fin.

2^e. R.

Trio.

Fin.

2^e. Dessus.

1^{er}. Rigaudon.

On reprend le 1^{er} R.

2^e R.

Trio.

On reprend le 1^{er} R.

4 Sarabande. *L.^{ro} Dessus.*

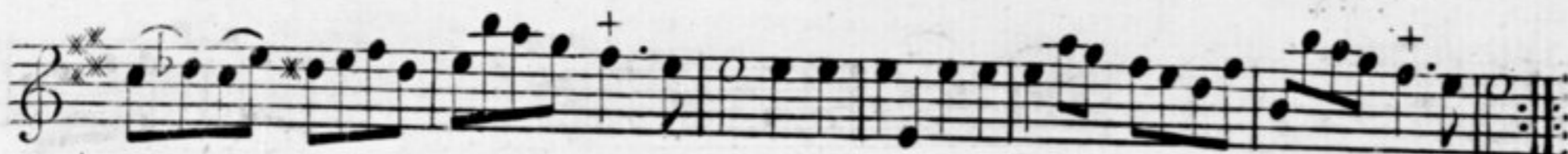
1.^{er} Badine.

2.^e B.

Trio.

2.^{er} Dessus.

5

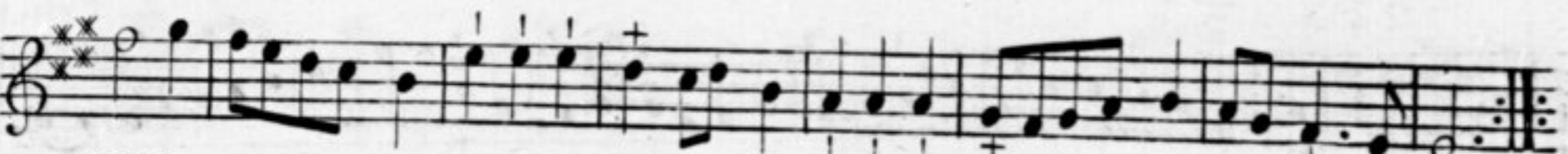


1.^{er} Menuet

On reprend la 1.^{er} B.



2.^o M.



1.^{er} Gavotte.

On reprend le 1.^{er} m.



Trio. tres tendrem^t



2.^o G.



On reprend la 1.^{ere}

1^{re} Sicilienne.

The first system of the 1^{re} Sicilienne consists of five staves of music. The first staff begins with a treble clef, a key signature of one sharp (F#), and a 6/8 time signature. The music is written in a single melodic line with various note values and rests. A double bar line with repeat dots is placed after the second staff, with the word "Fin." written below it. The system concludes with a final cadence on the fifth staff.

2^e S.

Fin. u

The second system of the 1^{re} Sicilienne consists of five staves of music. The first staff begins with a treble clef, a key signature of one sharp (F#), and a 6/8 time signature. The music continues with a similar melodic line. A double bar line with repeat dots is placed after the second staff, with the word "Trio." written below it. The system concludes with a final cadence on the fifth staff.

On reprend la 1^{re} S.

Chaconne.

2^e Dessus.

7



Trio.



tous.



Trio.



tous.



2.^e Dessus.

doux.

Trio.

très doux. *fort.*

2^e. Dessus.

9

Fin de la 3^{me} Suite.