

Musicalische Frühlings-Früchte

In drei- vier- und fünff-stimmiger
Instrumental-Harmonia
mit Basso Continuo

Hamburg 1668

Dietrich Becker
1623 – 1679

Published by Johan Tufvesson.

Non-commercial copying welcome

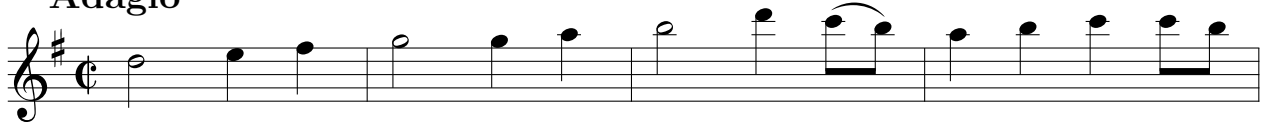
Revision : 1.1

Violino I

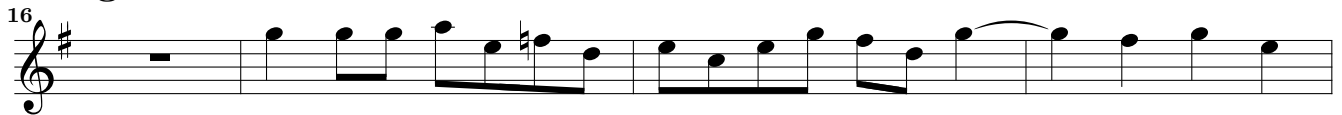
1. Sonata à 3

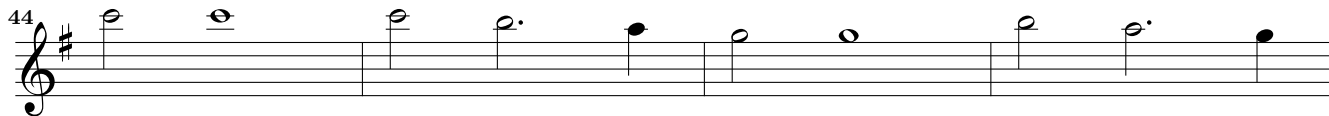
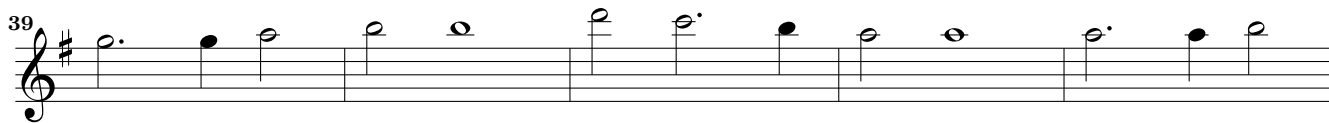
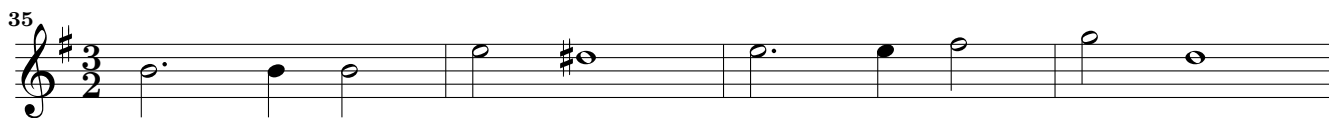
Dietrich Becker (1623-1679)

Adagio



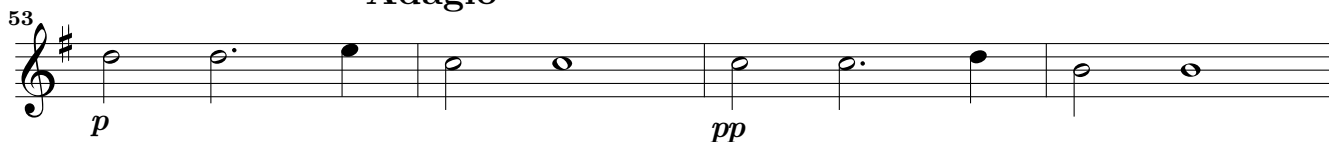
Allegro



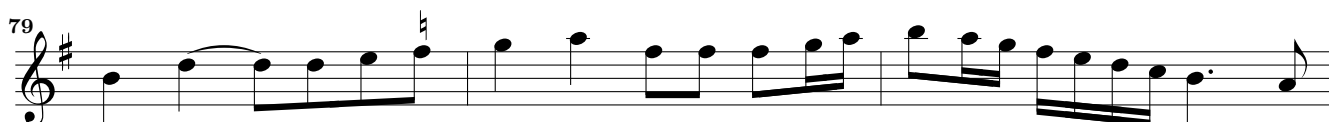
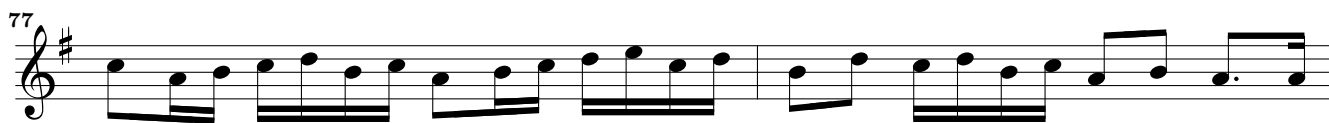
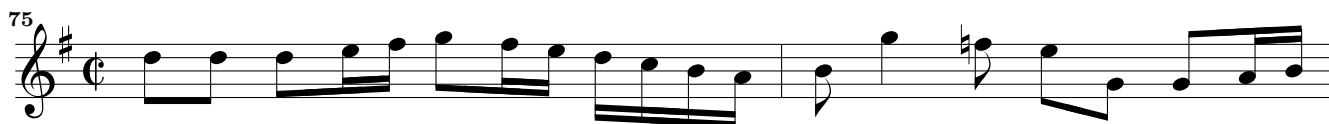
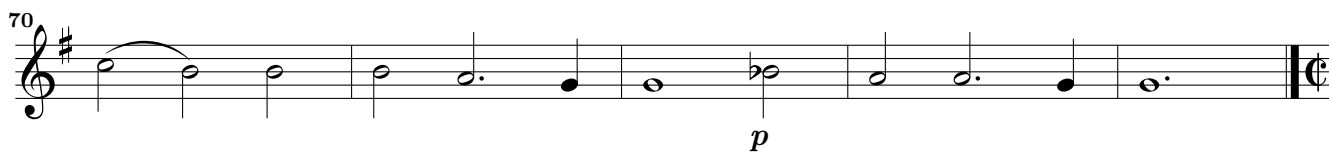
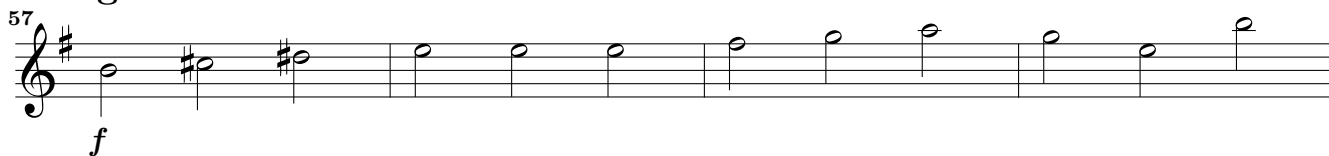


Adagio

Adagio



Allegro



Musical score for Violino I, measures 82-136. The score is written in treble clef with a key signature of one sharp (F#) and a time signature of 3/4. The music features various rhythmic patterns, including eighth and sixteenth notes, and rests. Dynamic markings include *p* (piano) and *f* (forte). A trill (*tr*) is indicated above a note in measure 90. The score concludes with a double bar line and repeat dots.

82

85

88

90 *tr*

93

95

98

101

108 *p* *f*

115 *p*

122 *f*

129

136 *p* *f*

4
Violino I

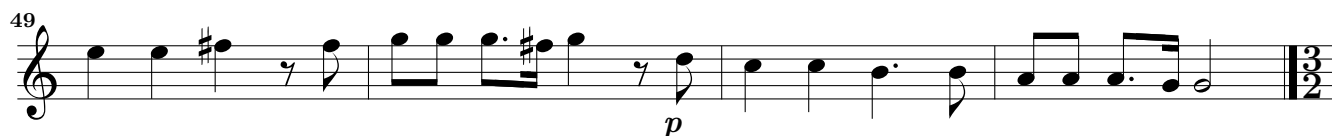
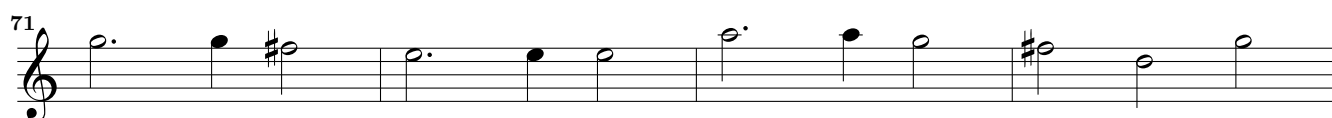
2. Sonata à 3

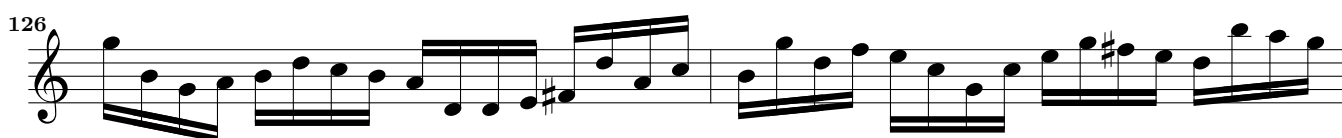
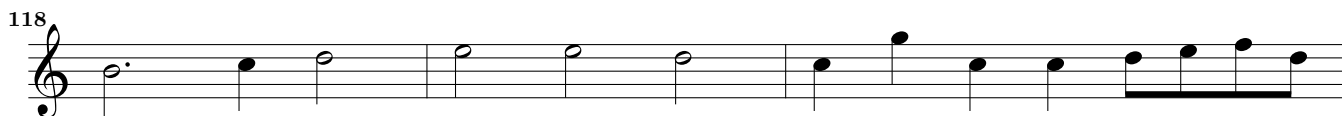
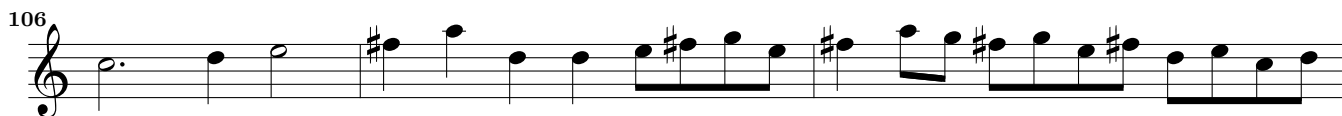
Allegro

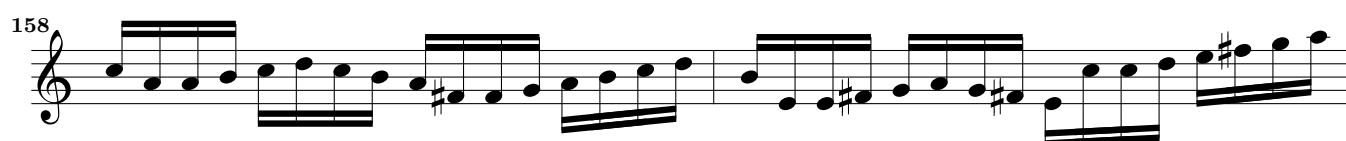
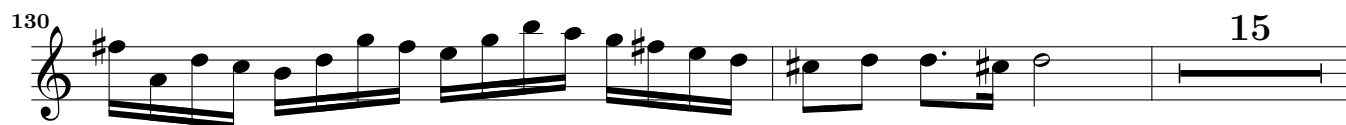
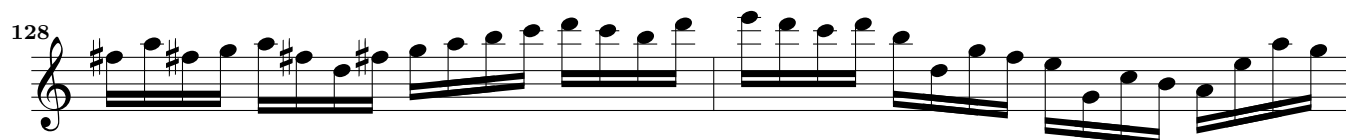
Musical score for Violino I, Allegro section, measures 4 to 22. The score is written in treble clef with a key signature of one sharp (F#) and a 3/4 time signature. It consists of eight staves of music. The first staff (measures 4-6) features a rhythmic pattern of eighth and sixteenth notes. The second staff (measures 7-9) includes a triplet of eighth notes. The third staff (measures 10-12) continues the eighth-note pattern. The fourth staff (measures 13-15) features a more complex rhythmic pattern with slurs. The fifth staff (measures 16-18) includes a measure with a whole rest. The sixth staff (measures 19-21) continues the eighth-note pattern. The seventh staff (measures 22) concludes the section with a double bar line.

Adagio

Musical score for Violino I, Adagio section, measures 23 to 36. The score is written in treble clef with a key signature of one sharp (F#) and a 3/4 time signature. It consists of four staves of music. The first staff (measures 23-26) features a slower, more melodic line with slurs. The second staff (measures 27-30) continues the melodic line. The third staff (measures 31-34) features a more rhythmic pattern with slurs. The fourth staff (measures 35-36) concludes the section with a double bar line.

**Presto****Adagio**



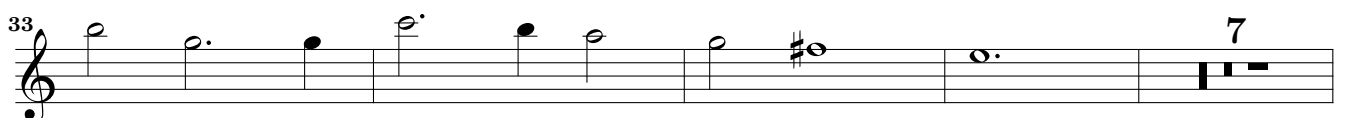
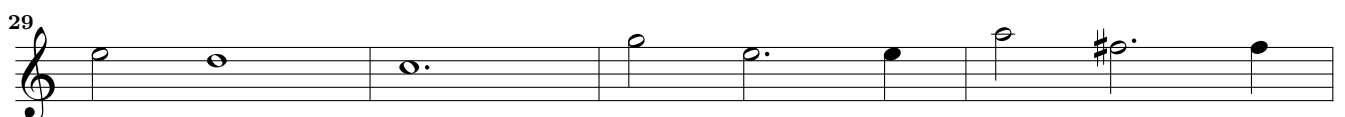
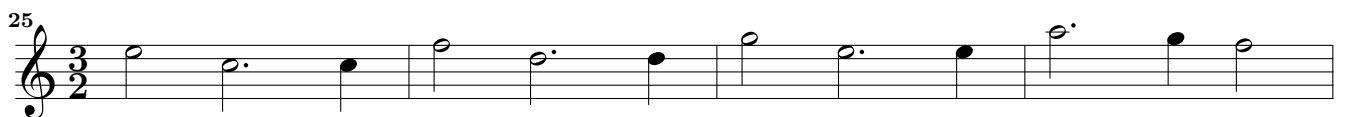


Violino I

3. Sonata à 3



Adagio



Musical score for Violino I, measures 44 to 91. The score is written in treble clef and common time. It features a variety of rhythmic patterns, including eighth and sixteenth notes, and rests. Trills are indicated by 'tr' above notes in measures 62 and 83. The piece concludes with a double bar line and a common time signature.

10 Adagio

Musicalische Frühlings-Früchte – 3. Sonata à 3 – Violino I

Musical score for Adagio, measures 87-98. The music is in C major, 3/4 time. It features a melodic line with a trill (tr) in measure 98. The key signature changes to D major at the end of the section.

Presto

Musical score for Presto, measures 103-141. The music is in D major, 3/2 time. It features a fast, rhythmic melody with many sixteenth notes and a trill (tr) in measure 120. The piece concludes with a double bar line.

Violino I

4. Sonata à 3

Adagio

3

7

11

19

23

27

31

34

39

44

49

12
Adagio

Allegro

53

56

58

60

Adagio

Allegro

Adagio

Allegro

63

88

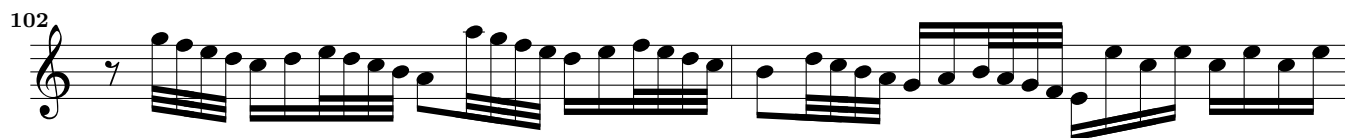
90

92

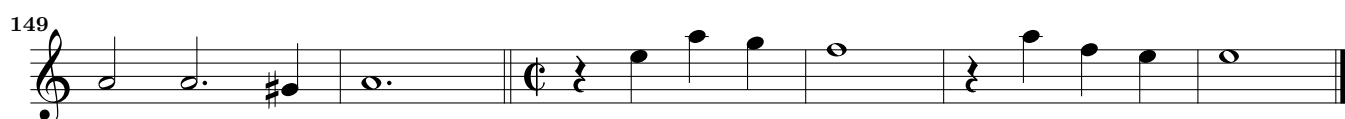
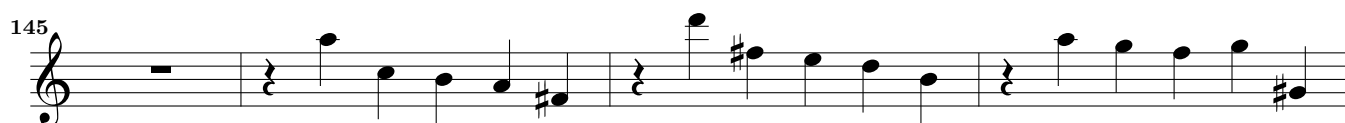
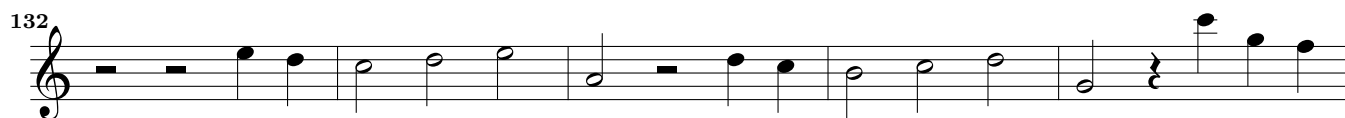
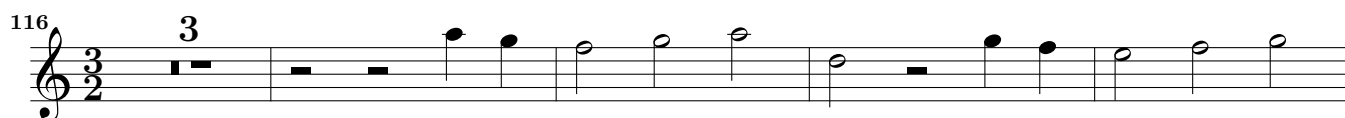
94

97

100



Adagio



Sonata – Suite à 4

5. Sonata

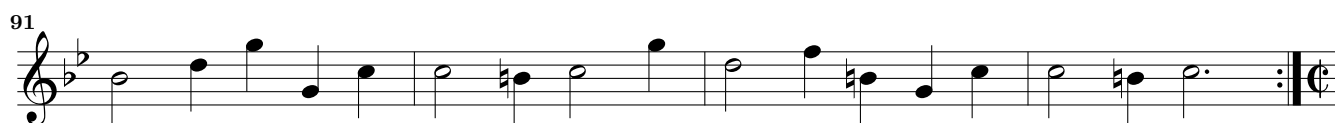
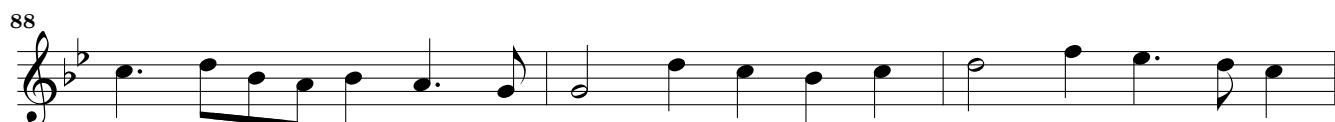
Musical score for the first section of the Sonata, measures 1-32. The score is written in treble clef with a key signature of two flats (B-flat and E-flat) and a 3/2 time signature. It consists of six staves of music. Measure numbers 6, 12, 17, 22, and 27 are indicated at the beginning of their respective staves. The music features a variety of note values, including quarter, eighth, and sixteenth notes, as well as rests. Trills (tr) are present in measures 17 and 27. Dynamic markings include *f* (forte) in measure 22 and *p* (piano) in measures 17, 27, and 32. The section concludes with a double bar line and a repeat sign.

Allegro

Musical score for the Allegro section, measures 33-57. The score is written in treble clef with a key signature of two flats and a 4/4 time signature. It consists of five staves of music. Measure numbers 33, 41, 45, and 49 are indicated at the beginning of their respective staves. The music is characterized by a fast tempo and features a prominent four-measure rest at the beginning of measure 33. The melody is primarily composed of eighth and sixteenth notes, often beamed together. Trills (tr) are present in measures 41 and 49. The section concludes with a double bar line.

Adagio

Musical score for the Adagio section, measures 58-63. The score is written in treble clef with a key signature of two flats and a 3/4 time signature. It consists of two staves of music. Measure numbers 58 and 63 are indicated at the beginning of their respective staves. The music is characterized by a slow tempo and features a variety of note values, including quarter, eighth, and sixteenth notes, as well as rests. Trills (tr) are present in measures 58 and 63. The section concludes with a double bar line.



6. Allmand



7. Courant

Musical score for 7. Courant, measures 1-24. The piece is in 3/4 time and B-flat major. It features a melodic line with various rhythmic patterns, including eighth and sixteenth notes, and rests. A repeat sign is present at measure 12. The score ends with a double bar line and repeat dots at measure 24.

8. Sarband

Musical score for 8. Sarband, measures 1-11. The piece is in 3/4 time and B-flat major. It features a melodic line with various rhythmic patterns, including eighth and sixteenth notes, and rests. A repeat sign is present at measure 6. The score ends with a double bar line and repeat dots at measure 11, with a trill (tr) indicated above the final note.

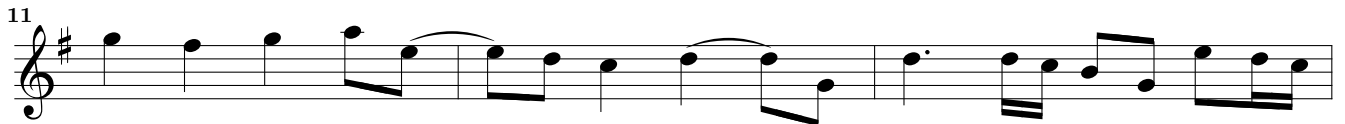
9. Gigue

Musical score for 9. Gigue, measures 1-26. The piece is in 3/4 time and B-flat major. It features a melodic line with various rhythmic patterns, including eighth and sixteenth notes, and rests. A repeat sign is present at measure 14. The score ends with a double bar line and repeat dots at measure 26, with a trill (tr) indicated above the final note.

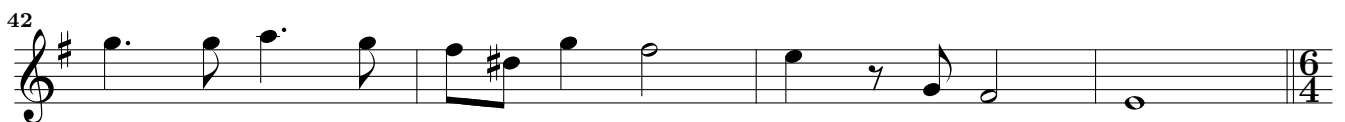
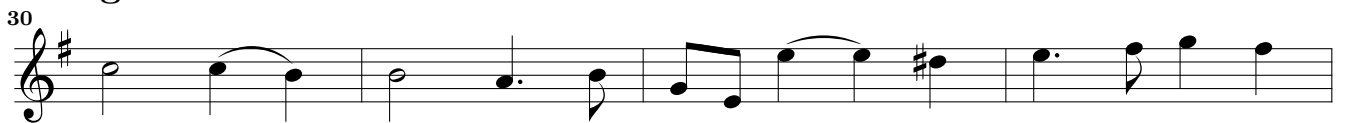
This page intentionally left blank.

Sonata – Suite à 4

10. Sonata Allegro



Adagio



46

49

52

55

58

61

Allegro

64

68

71

75

78

82

85

88

Musical score for '11. Allmand' in G major, 4/4 time. The score consists of six staves of music. The first staff begins with a treble clef, a key signature of one sharp (F#), and a common time signature (C). The music features a mix of eighth and sixteenth notes, with some rests. The second staff starts at measure 4. The third staff starts at measure 7. The fourth staff starts at measure 9 and includes a repeat sign. The fifth staff starts at measure 13. The sixth staff starts at measure 17 and ends with a double bar line and repeat dots.

12. Courant

Musical score for '12. Courant' in G major, 3/4 time. The score consists of six staves of music. The first staff begins with a treble clef, a key signature of one sharp (F#), and a 3/4 time signature. The music is characterized by a steady eighth-note rhythm. The second staff starts at measure 5. The third staff starts at measure 10. The fourth staff starts at measure 15 and includes a repeat sign. The fifth staff starts at measure 21. The sixth staff starts at measure 27 and ends with a double bar line and repeat dots.

13. Sarband

Musical score for Sarband, measures 1-13. The piece is in 3/4 time and G major. The notation consists of a single melodic line on a treble clef staff. Measure 1 starts with a quarter note G4, followed by quarter notes A4, B4, and C5. Measure 2 has a dotted quarter note C5, an eighth note B4, and a quarter note A4. Measure 3 has quarter notes G4, F4, and E4. Measure 4 has a quarter note D4, a quarter note C4, and a quarter note B3. Measure 5 has quarter notes A3, G3, and F3. Measure 6 has quarter notes E3, D3, and C3. Measure 7 has quarter notes B2, A2, and G2. Measure 8 has quarter notes F2, E2, and D2. Measure 9 has quarter notes C2, B1, and A1. Measure 10 has quarter notes G1, F1, and E1. Measure 11 has quarter notes D1, C1, and B0. Measure 12 has quarter notes A0, G0, and F0. Measure 13 has quarter notes E0, D0, and C0, ending with a double bar line and repeat dots.

14. Gique

Musical score for Gique, measures 1-33. The piece is in 3/4 time and G major. The notation consists of a single melodic line on a treble clef staff. Measure 1 has a quarter rest, followed by a quarter note G4. Measure 2 has a quarter rest, followed by a quarter note A4. Measure 3 has a quarter note B4, a quarter note C5, and a quarter note D5. Measure 4 has a quarter note E5, a quarter note F5, and a quarter note G5. Measure 5 has a quarter note A5, a quarter note B5, and a quarter note C6. Measure 6 has a quarter note D6, a quarter note E6, and a quarter note F6. Measure 7 has a quarter note G6, a quarter note A6, and a quarter note B6. Measure 8 has a quarter note C7, a quarter note D7, and a quarter note E7. Measure 9 has a quarter note F7, a quarter note G7, and a quarter note A7. Measure 10 has a quarter note B7, a quarter note C8, and a quarter note D8. Measure 11 has a quarter note E8, a quarter note F8, and a quarter note G8. Measure 12 has a quarter note A8, a quarter note B8, and a quarter note C9. Measure 13 has a quarter note D9, a quarter note E9, and a quarter note F9. Measure 14 has a quarter note G9, a quarter note A9, and a quarter note B9. Measure 15 has a quarter note C10, a quarter note D10, and a quarter note E10. Measure 16 has a quarter note F10, a quarter note G10, and a quarter note A10. Measure 17 has a quarter note B10, a quarter note C11, and a quarter note D11. Measure 18 has a quarter note E11, a quarter note F11, and a quarter note G11. Measure 19 has a quarter note A11, a quarter note B11, and a quarter note C12. Measure 20 has a quarter note D12, a quarter note E12, and a quarter note F12. Measure 21 has a quarter note G12, a quarter note A12, and a quarter note B12. Measure 22 has a quarter note C13, a quarter note D13, and a quarter note E13. Measure 23 has a quarter note F13, a quarter note G13, and a quarter note A13. Measure 24 has a quarter note B13, a quarter note C14, and a quarter note D14. Measure 25 has a quarter note E14, a quarter note F14, and a quarter note G14. Measure 26 has a quarter note A14, a quarter note B14, and a quarter note C15. Measure 27 has a quarter note D15, a quarter note E15, and a quarter note F15. Measure 28 has a quarter note G15, a quarter note A15, and a quarter note B15. Measure 29 has a quarter note C16, a quarter note D16, and a quarter note E16. Measure 30 has a quarter note F16, a quarter note G16, and a quarter note A16. Measure 31 has a quarter note B16, a quarter note C17, and a quarter note D17. Measure 32 has a quarter note E17, a quarter note F17, and a quarter note G17. Measure 33 has a quarter note A17, a quarter note B17, and a quarter note C18, ending with a double bar line and repeat dots.

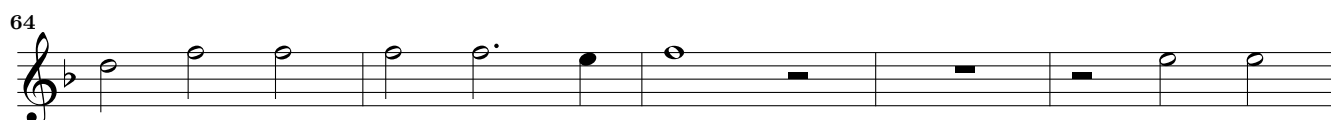
15. Sonata à 5

Adagio

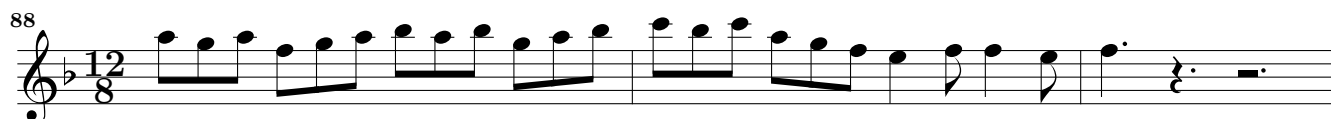
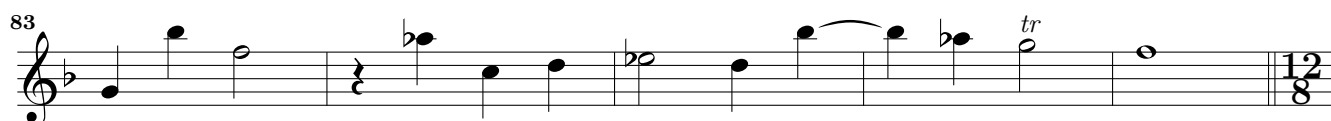
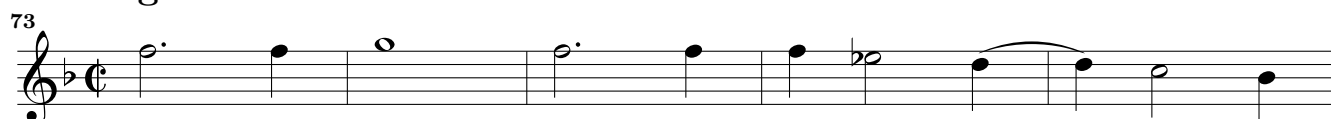
Musical score for Violino I, Adagio section, measures 1-33. The score is written in treble clef with a key signature of one flat (B-flat) and a common time signature (C). The tempo is marked 'Adagio'. The notation includes various note values, rests, and ornaments. Measure 11 features a 'Tremolo' marking. Measure 18 includes a trill ('tr'). The section concludes with a double bar line and a 3/2 time signature change.

Allegro

Musical score for Violino I, Allegro section, measures 38-50. The score is written in treble clef with a key signature of one flat (B-flat) and a 3/2 time signature. The tempo is marked 'Allegro'. The notation consists of eighth and sixteenth notes, with some rests. The section ends at measure 50.



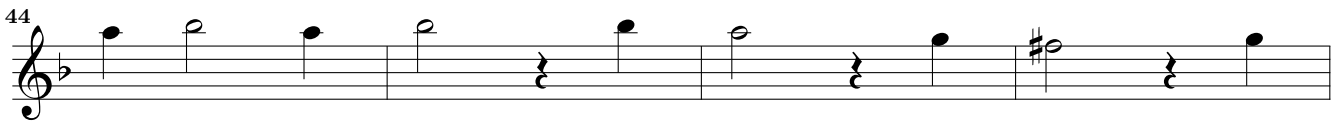
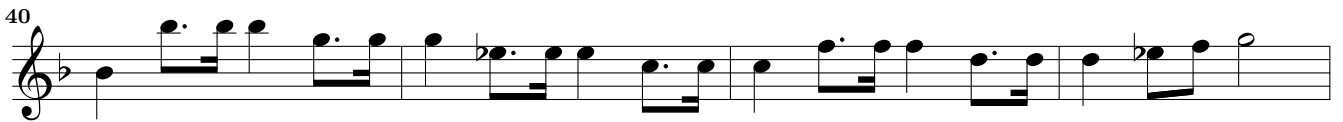
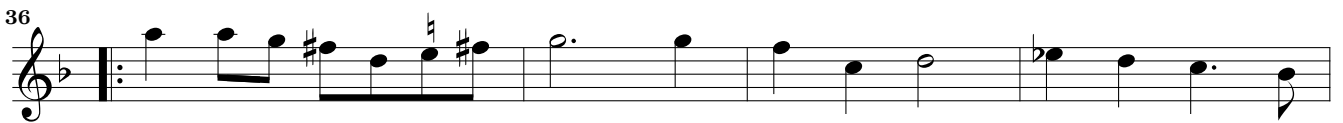
Adagio



Adagio



16. Paduana à 5



Violino I

17. Paduana à 5

4

8

11

16

21

25

29

34

38

42

46

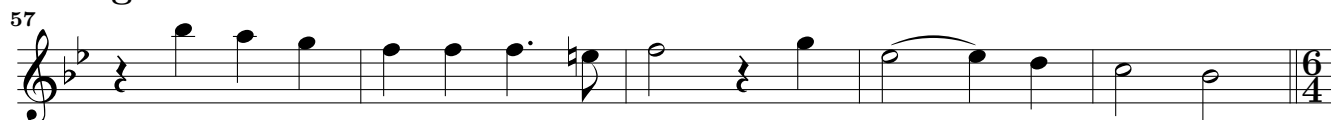
18. Sonata à 5

Musical score for Violino I, Sonata à 5, measures 1-44. The score is written in treble clef with a key signature of two flats (B-flat and E-flat). The time signature is common time (C). The score consists of 12 staves of music. The first staff (measures 1-4) features a melodic line with eighth and sixteenth notes. The second staff (measures 5-8) continues the melodic line. The third staff (measures 9-12) continues the melodic line. The fourth staff (measures 13-16) features a melodic line with a 3/2 time signature change. The fifth staff (measures 17-21) continues the melodic line. The sixth staff (measures 22-25) continues the melodic line. The seventh staff (measures 26-29) is marked 'Adagio' and features a melodic line with a 3/2 time signature change. The eighth staff (measures 30-33) continues the melodic line. The ninth staff (measures 34-38) continues the melodic line. The tenth staff (measures 39-43) continues the melodic line. The eleventh staff (measures 44) continues the melodic line.

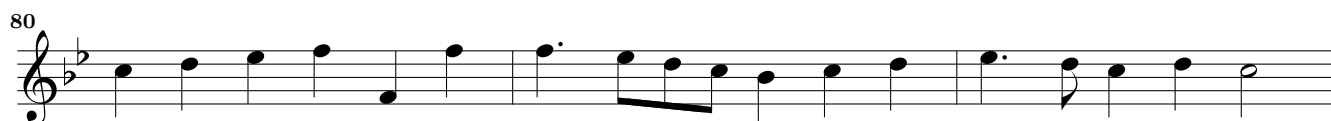
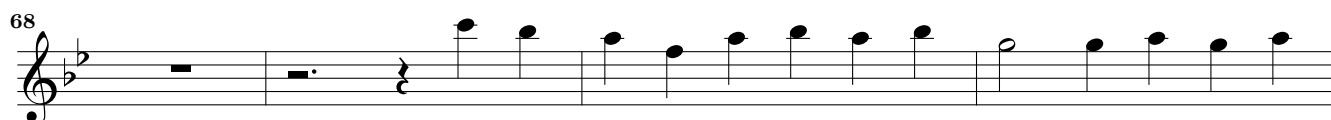
Allegro



Adagio



Allegro



Adagio



19. Sonata à 5

The image displays a musical score for Violino I, consisting of ten staves of music. The key signature is one flat (B-flat) and the time signature is common time (C). The score begins with a treble clef and a key signature of one flat. The first staff contains measures 1 through 4. The second staff starts at measure 5 and ends at measure 9. The third staff starts at measure 10 and ends at measure 13. The fourth staff starts at measure 14 and ends at measure 17. The fifth staff starts at measure 18 and includes a triplet of eighth notes in measure 20. The sixth staff starts at measure 24 and ends at measure 26. The seventh staff starts at measure 27 and ends at measure 29. The eighth staff starts at measure 30 and ends at measure 33. The ninth staff starts at measure 34 and ends at measure 37. The tenth staff starts at measure 38 and ends at measure 40. The eleventh staff starts at measure 41 and ends at measure 44. The twelfth staff starts at measure 45 and ends at measure 48. The score concludes with a double bar line at the end of the final staff.

Adagio

Musical score for Violino I, Adagio, measures 49-95. The score is written in treble clef with a key signature of one flat (B-flat). The tempo is Adagio. The score consists of 11 staves of music. Measure 49 starts with a half note B-flat. Measure 53 begins with a triplet of eighth notes. Measure 58 ends with a double bar line and a 6/4 time signature change. Measure 64 starts with a 6/4 time signature. Measure 76 features a triplet of eighth notes. Measure 82 has a half note G. Measure 85 has a half note F. Measure 88 has a half note E. Measure 91 has a half note D. Measure 95 ends with a half note C and a fermata.

Suite à 5

20. Ariæ

5

9

13

24

28

40

52

57

62

67

72

tr

f

p

p

f

p

21. Ballet

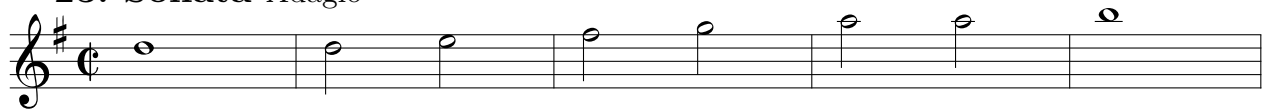
Musical score for '21. Ballet' in G major, 7/8 time. The score consists of seven staves of music. The first staff begins with a treble clef, a key signature of one sharp (F#), and a 7/8 time signature. The music features a mix of eighth and quarter notes. The second staff starts at measure 5. The third staff starts at measure 10 and includes a triplet of eighth notes. The fourth staff starts at measure 17 and includes a repeat sign. The fifth staff starts at measure 22 and includes a triplet of eighth notes. The sixth staff starts at measure 29. The seventh staff starts at measure 33 and ends with a double bar line and repeat sign.

22. Sarband Adagio

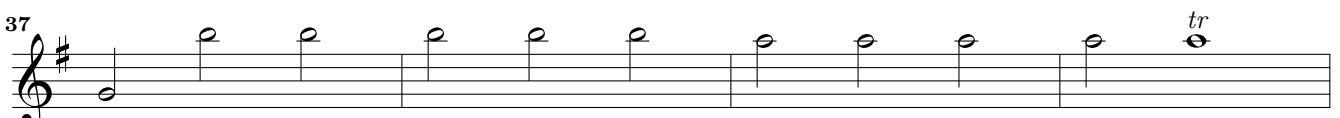
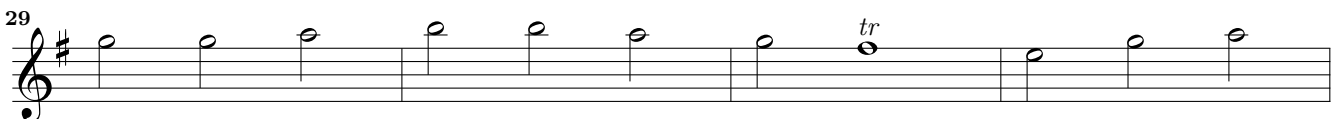
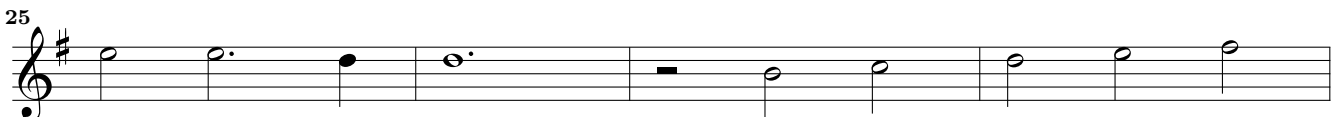
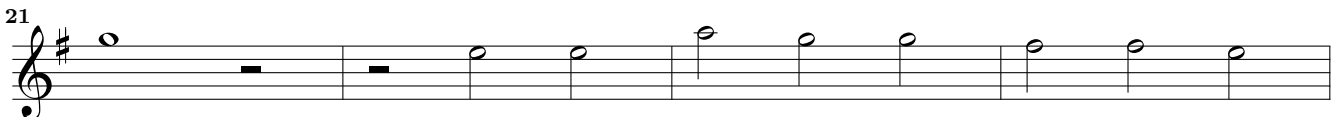
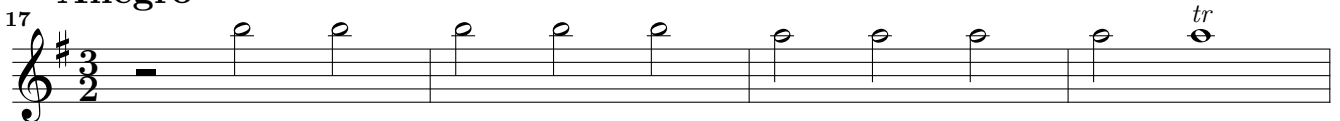
Musical score for '22. Sarband Adagio' in G major, 3/4 time. The score consists of four staves of music. The first staff begins with a treble clef, a key signature of one sharp (F#), and a 3/4 time signature. The music is characterized by a slow, spacious feel with dotted rhythms. The second staff starts at measure 5 and includes a trill (tr) and a 4-measure rest. The third staff starts at measure 13 and includes a repeat sign. The fourth staff starts at measure 17 and includes a 4-measure rest.

Sonata – Suite à 5

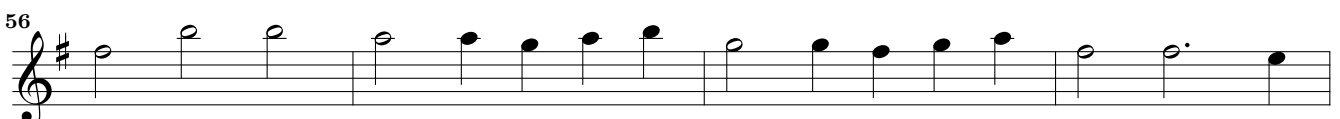
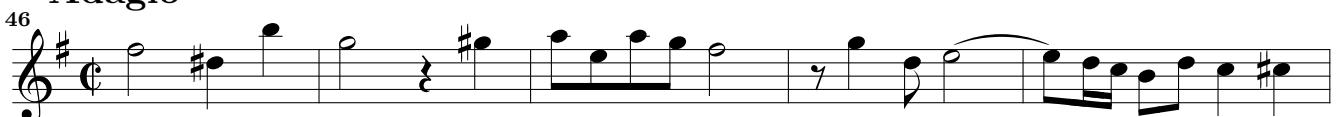
23. Sonata Adagio



Allegro



Adagio



64

68

72

p

76

81

86

89

92

95

98

101

105

107

110

113

Detailed description: This page contains the musical score for measures 64 through 113 of the first violin part. The music is written in treble clef with a key signature of one sharp (F#). The time signature is 6/4. The score consists of 14 staves. Measure 64 begins with a piano (*p*) dynamic. The music features a variety of note values, including quarter, eighth, and sixteenth notes, as well as rests. There are several slurs and phrasing marks throughout. A repeat sign with first and second endings is present at the end of measure 113. The page number 33 is in the top right corner.

24. Allmand

Musical score for '24. Allmand' in G major, 2/4 time. The score consists of five staves of music. The first staff begins with a treble clef, a key signature of one sharp (F#), and a common time signature (C). The melody starts on G4 and moves through various intervals, including eighth and sixteenth notes. The second staff begins at measure 4 and features a more rhythmic pattern with eighth notes and rests. The third staff begins at measure 7 and includes a repeat sign at the start. The fourth staff begins at measure 11 and continues the melodic line. The fifth staff begins at measure 14 and concludes with a double bar line and repeat dots.

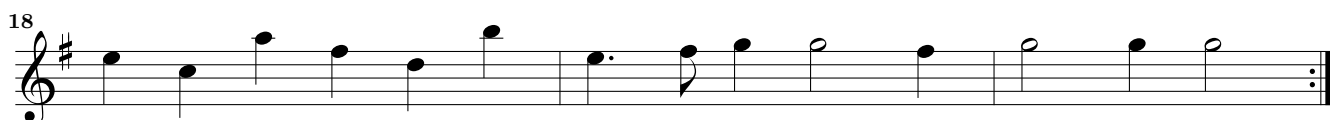
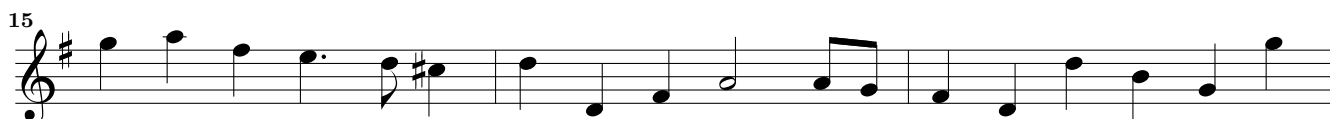
25. Courant

Musical score for '25. Courant' in G major, 3/4 time. The score consists of five staves of music. The first staff begins with a treble clef, a key signature of one sharp (F#), and a 3/4 time signature. The melody starts on G4 and features a mix of quarter and eighth notes. The second staff begins at measure 5 and includes a dotted line above a note, indicating a fermata. The third staff begins at measure 9 and includes a repeat sign at the start. The fourth staff begins at measure 15 and continues the melodic line. The fifth staff begins at measure 21 and concludes with a double bar line and repeat dots.

26. Sarband

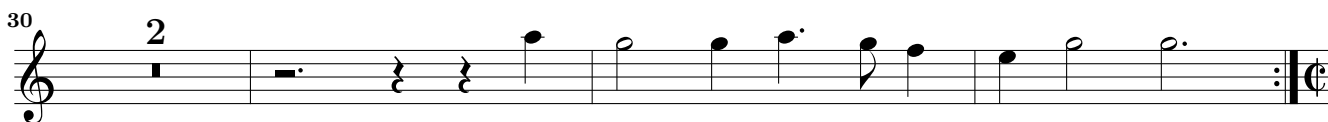
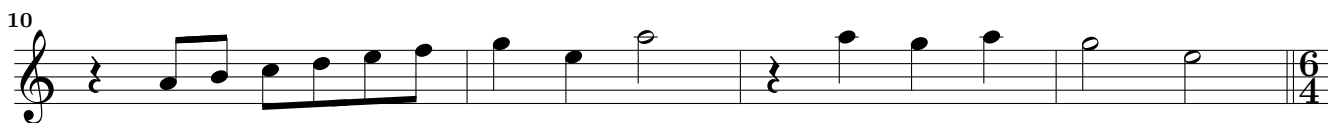
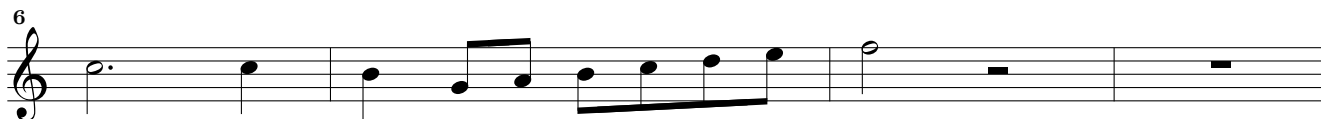
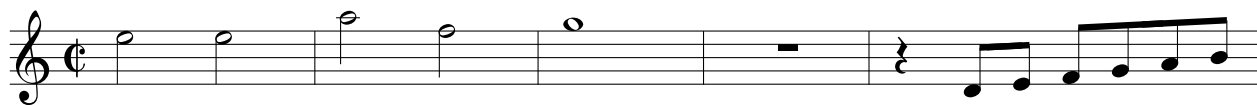


27. Gique



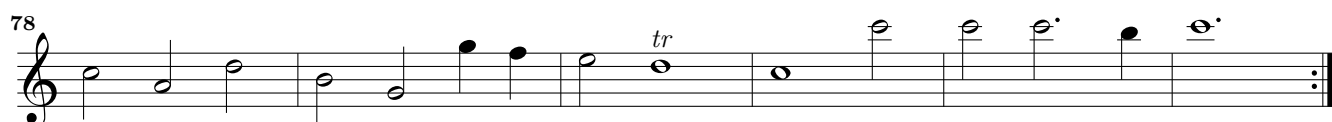
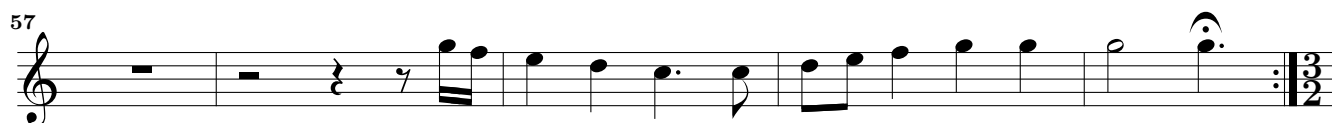
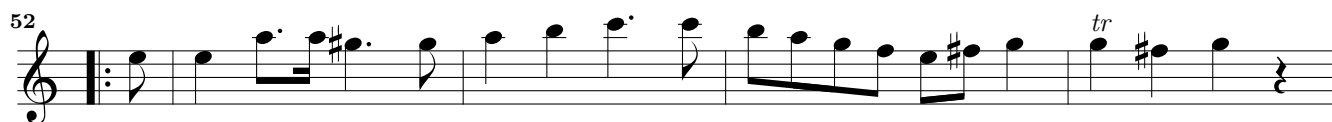
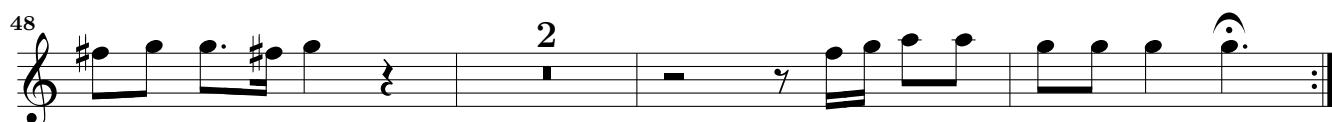
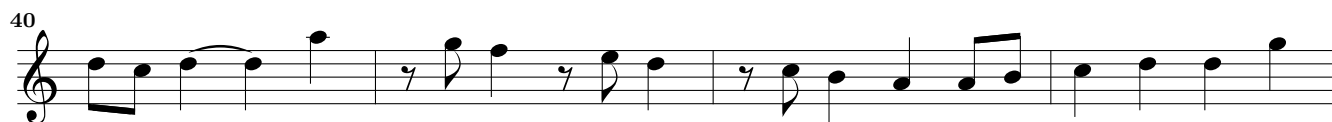
Violino I

28. Canzon à 5



Adagio

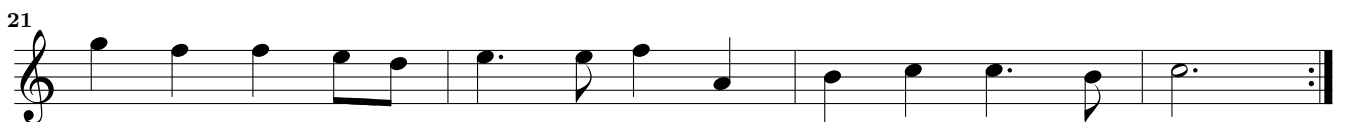




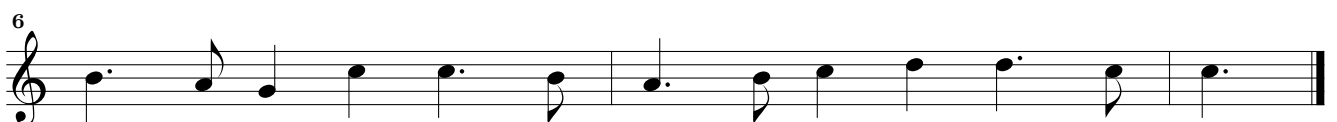
Violino

29. Suite à 4

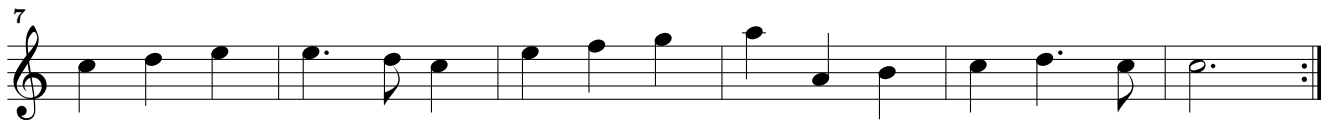
Brandle



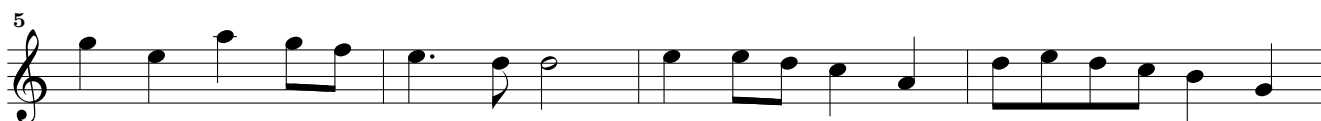
Gay



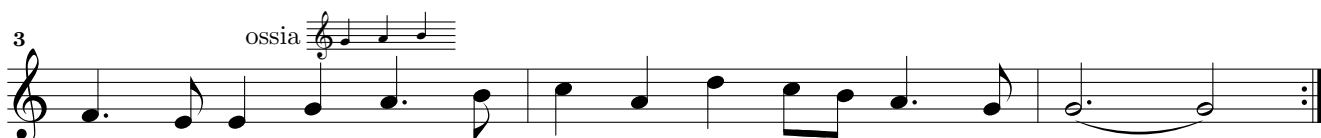
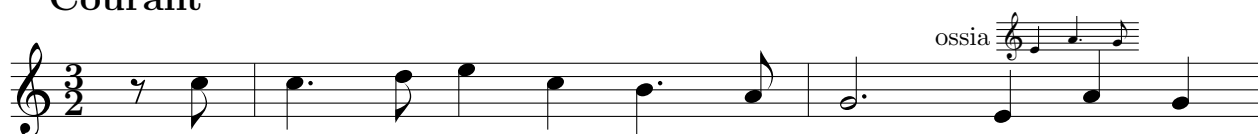
Amener



Gavott



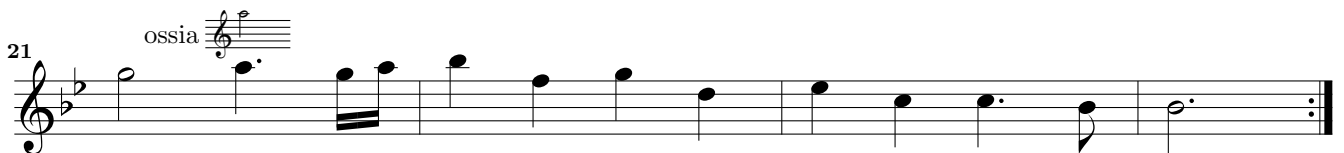
Courant



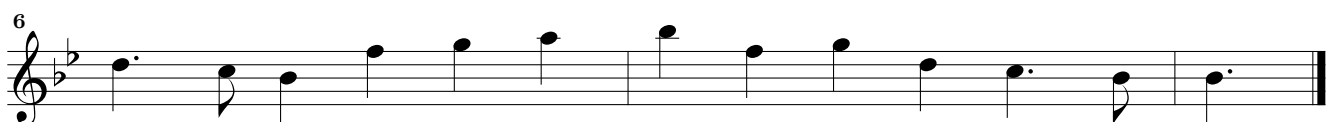
Violino

30. Suite à 4

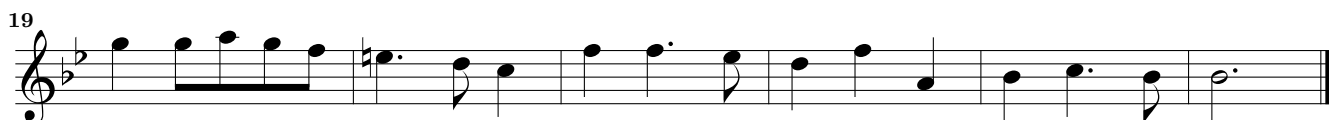
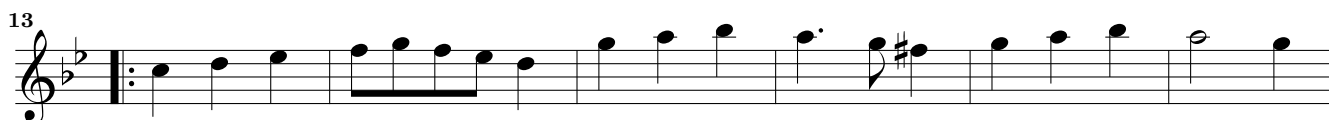
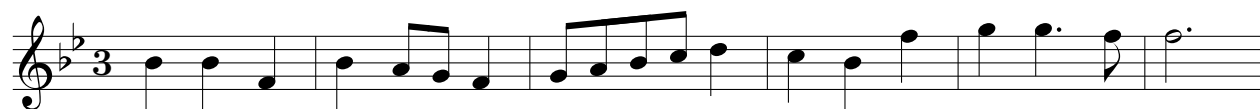
Brandle



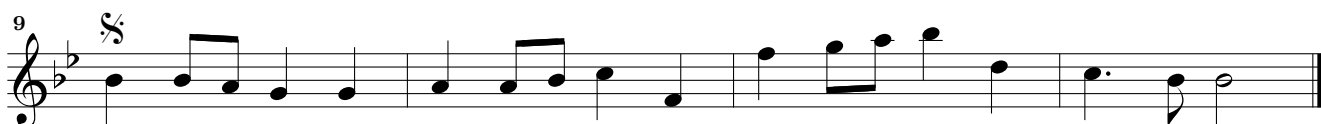
Gay



Amener



Gavott



Courant

