

Zweyter Theil.

Recitativ.

Moses.

Verdie-net habt ihr ihn, den Zorn des Herrn; doch er hat euch verziehn. Er sucht, er

lie-bet euch: o! wenn für sei-ne Sü-te nicht eu-re Brust von Danke-gier-de glühte, wärt ihr des Daseyns werth? ihr,

die ihr wi-der ihn em-pört, im bit-tern Klag-ge-schrey die Weisheit sei-nes Rath's ge-schmähet; ihr,

de-ren Schmerz sein Rath in Won-ne kehrt, o be-tet, be-tet, be-tet den Gott der Gnaden

an, ihn, der mein Flehn er-pört.

Arie.

Flöten. Allegretto.

Violinen.

Bratsche.

Moses.

Bass.

Flöten.

Flöten.

Violinen.

Bratsche.

Gott Is-ra = els, em = pfange im jauchzen = den Ge = san = ge der

5 7 6 4 3 6 5 7 6 5

Flöten.

Flöten.

Violinen.

Bratsche.

Her = zen hei = ßen Dank! Gott Is-ra = els, em = pfan = = ge der Herzen hei = ßen

8 7 5 4 5 6 5

Flöten.

Flöten.

Violinen.

Bratsche.

Dank, im jauch =

6 5 4 5 6 5

Flöten.

Violin.

Bratsche.

Flöten.

Violin.

Bratsche.

Flöten.

Violin.

Bratsche.

Ellen Bogler Bradvogel
Berlin
Kolscheneke 19.

Flöten.

Violinen.

Bratsche.

— war das Grau-en, das mich zu zit-tern zwang, das mich zu zit-tern

Detailed description: This system contains five staves. The top staff is for Flöten (Flutes) in G major, 3/4 time, with a trill (tr) in the final measure. The second and third staves are for Violinen (Violins) and Bratsche (Violas) respectively, both in G major and 3/4 time, playing a rhythmic accompaniment of eighth notes. The fourth staff is for a vocal line in G major, 3/4 time, with lyrics: "— war das Grau-en, das mich zu zit-tern zwang, das mich zu zit-tern". The fifth staff is a basso continuo line in G major, 3/4 time, with a trill (tr) in the final measure.

Flöten.

Violinen.

Bratsche.

zwang, das Grau = en, das mich zu zit = tern

Detailed description: This system contains five staves. The top staff is for Flöten (Flutes) in G major, 3/4 time. The second and third staves are for Violinen (Violins) and Bratsche (Violas) respectively, both in G major and 3/4 time. The fourth staff is for a vocal line in G major, 3/4 time, with lyrics: "zwang, das Grau = en, das mich zu zit = tern". The fifth staff is a basso continuo line in G major, 3/4 time.

Flöten.

Violinen.

Bratsche.

zwang.

Detailed description: This system contains five staves. The top staff is for Flöten (Flutes) in G major, 3/4 time, with a trill (tr) in the first measure. The second and third staves are for Violinen (Violins) and Bratsche (Violas) respectively, both in G major and 3/4 time. The fourth staff is for a vocal line in G major, 3/4 time, with the lyric "zwang.". The fifth staff is a basso continuo line in G major, 3/4 time.

Tutti.

1. Tromp.

1. Tromp. Musical staff with treble clef, key signature of two flats, and a trill (tr) marking.

2. Tromp.

2. Tromp. Musical staff with treble clef, key signature of two flats, and a trill (tr) marking.

3. Tromp.

3. Tromp. Musical staff with treble clef, key signature of two flats.

Pauken.

Pauken. Musical staff with a soprano clef and a key signature of two flats.

1. Horn.

1. Horn. Musical staff with treble clef, key signature of two flats, and a trill (tr) marking.

2. Horn.

2. Horn. Musical staff with treble clef, key signature of two flats, and a trill (tr) marking.

1. Flöte.

1. Flöte. Musical staff with treble clef, key signature of two flats, and a trill (tr) marking.

2. Flöte.

2. Flöte. Musical staff with treble clef, key signature of two flats, and a trill (tr) marking.

1. Violin.

1. Violin. Musical staff with treble clef, key signature of two flats, and a trill (tr) marking.

2. Violin.

2. Violin. Musical staff with treble clef, key signature of two flats, and a trill (tr) marking.

Bratsche.

Bratsche. Musical staff with a soprano clef, key signature of two flats, and a trill (tr) marking.

Discant, u.

1. Hoboe.

1. Hoboe. Musical staff with a soprano clef, key signature of two flats, and a trill (tr) marking.

Alt, und Gott Is-ra = el's, em = pfange, em = pfan = = ge der Her = zen hei = sen Dank,

2. Hoboe.

2. Hoboe. Musical staff with a soprano clef, key signature of two flats.

Tenor. Gott Is-ra = el's, em = pfange, em = pfan = = ge der Her = zen hei = sen Dank,

Tenor. Musical staff with a soprano clef, key signature of two flats.

Baß. Gott Is-ra = el's, em = pfan = ge, em = pfan = ge der Herzen hei = sen Dank,

Baß. Musical staff with a soprano clef, key signature of two flats.

Baß. Gott Is-ra = el's, em = pfan = ge, em = pfan = ge der Herzen hei = sen Dank,

Baß. Musical staff with a soprano clef, key signature of two flats, and figured bass notation (4 3, 7, 4 3, 8, 7).

Continuation of the figured bass staff.

Ellen Bogler Brachvogel
Berlin
M. 1785

Harvard University - Eda Kuhn Loeb Music Library / Bach, Carl Philipp Emanuel, 1714-1788. [Israeliten in der Wüste]. Die Israeliten in der Wüste : ein Oratorium / in Musik gesetzt von Carl Philipp Emanuel Bach. Hamburg : Im Verlage des Autors, 1775. Merritt Mus 627.2.511.3

1. Tromp.

2. Tromp.

3. Tromp.

Pauken.

1. Horn.

2. Horn.

1. Flöte.

2. Flöte.

1. Violin.

2. Violin.

Bratsche.

1. Hoboe.

2. Hoboe.

Gott

Gott

Gott

Gott

If - ra - els, Gott If - ra - els, em - pfange Dank, der Her - zen Dank, der
 If - ra - els, Gott If - ra - els, em - pfange Dank, der Her - zen Dank, der
 If - ra - els, Gott If - ra - els, em - pfange Dank, der Her - zen Dank, der
 If - ra - els, Gott If - ra - els, em - pfange Dank, der Her - zen Dank, der

9 8 7 6 5 4 3 2 1
 4 3 2 1 4 3 2 1

1. Tromp.

2. Tromp.

3. Tromp.

Paucken.

1. Horn.

2. Horn.

1. Flöte.

2. Flöte.

1. Violin.

2. Violin.

Bratsche.

1. Hoboe.

2. Hoboe. Herzen hei-ßen Dank, Gott, Gott I - sta - els, em - pfan - ge, em - pfan - ge der

Herzen hei-ßen Dank, Gott, Gott I - sta - els, em - pfan - ge, em - pfan - ge der

Herzen hei-ßen Dank, Gott, Gott I - sta - els, em - pfan - ge, em - pfan - ge der

Herzen hei-ßen Dank, Gott, Gott I - sta - els, em - pfan - ge, em - pfan - ge der

8 7 4 3 7 6 5 6 5 6 2

1. Tromp.

First staff of music for the 1st Trumpet, featuring a treble clef, a common time signature, and a key signature of one flat. The notation includes quarter notes, eighth notes, and rests, with a trill (tr) marking above the final measure.

2. Tromp.

Second staff of music for the 2nd Trumpet, identical in notation to the first staff.

3. Tromp.

Third staff of music for the 3rd Trumpet, identical in notation to the first two staves.

Pauken.

Drum staff (Pauken) with a bass clef and a common time signature, showing a simple rhythmic pattern of quarter notes.

1. Horn.

First staff of music for the 1st Horn, featuring a treble clef, a common time signature, and a key signature of one flat. It includes a trill (tr) marking above the final measure.

2. Horn.

Second staff of music for the 2nd Horn, identical in notation to the first staff.

1. Flöte.

First staff of music for the 1st Flute, featuring a treble clef, a common time signature, and a key signature of two flats. The notation is more complex, with many sixteenth notes and a trill (tr) marking above the final measure.

2. Flöte.

Second staff of music for the 2nd Flute, identical in notation to the first staff.

1. Violin.

First staff of music for the 1st Violin, featuring a treble clef, a common time signature, and a key signature of two flats. It includes a trill (tr) marking above the final measure.

2. Violin.

Second staff of music for the 2nd Violin, identical in notation to the first staff.

Bratsche.

Violoncello staff (Bratsche) with a bass clef, a common time signature, and a key signature of two flats. It includes a trill (tr) marking above the final measure.

1. Hoboe.

First staff of music for the 1st Oboe, featuring a treble clef, a common time signature, and a key signature of two flats. It includes a trill (tr) marking above the final measure. The text "ohne Hoboen." is written above the staff.

2. Hoboe.

Second staff of music for the 2nd Oboe, identical in notation to the first staff.

3. Hoboe.

Third staff of music for the 3rd Oboe, identical in notation to the first two staves.

4. Hoboe.

Fourth staff of music for the 4th Oboe, identical in notation to the first three staves.

5. Hoboe.

Fifth staff of music for the 5th Oboe, identical in notation to the first four staves.

6. Hoboe.

Sixth staff of music for the 6th Oboe, identical in notation to the first five staves.

7. Hoboe.

Seventh staff of music for the 7th Oboe, identical in notation to the first six staves.

8. Hoboe.

Eighth staff of music for the 8th Oboe, identical in notation to the first seven staves.

9. Hoboe.

Ninth staff of music for the 9th Oboe, identical in notation to the first eight staves.

10. Hoboe.

ohne Hoboen.

Her = — — — — — = zen hei = sen Dank, der Her =
tr
Her = — — — — — = zen hei = sen Dank, der Her =
tr
Her = — — — — — = zen hei = sen Dank!
Her = — — — — — = zen hei = sen Dank!
6 6 5 5 6 6 6 6 6

1. Tromp.

2. Tromp.

3. Tromp.

Pauken.

1. Horn.

2. Horn.

1. Flöte.

2. Flöte.

1. Violin.

2. Violin.

Bratsche.

Ellen Bogler Schröder
Berlin
Kottbusser Str. 10.

1. Tromp.

Musical staff for 1. Tromp. (Trumpet 1) in G major, 3/4 time. Includes a trill (tr) on the first measure.

2. Tromp.

Musical staff for 2. Tromp. (Trumpet 2) in G major, 3/4 time.

3. Tromp.

Musical staff for 3. Tromp. (Trumpet 3) in G major, 3/4 time.

Pauken.

Musical staff for Pauken (Drum) in G major, 3/4 time.

1. Horn.

Musical staff for 1. Horn in G major, 3/4 time. Includes a trill (tr).

2. Horn.

Musical staff for 2. Horn in G major, 3/4 time.

1. Flöte.

Musical staff for 1. Flöte (Flute) in G major, 3/4 time. Includes a trill (tr).

2. Flöte.

Musical staff for 2. Flöte (Flute) in G major, 3/4 time. Includes a trill (tr).

1. Violin.

Musical staff for 1. Violin in G major, 3/4 time. Includes a trill (tr).

2. Violin.

Musical staff for 2. Violin in G major, 3/4 time. Includes a trill (tr).

Bratsche.

Musical staff for Bratsche (Viola) in G major, 3/4 time. Includes a trill (tr).

Zweyte Israelitin, allein.

Vocal line for the second Israelite woman, starting with the lyrics "Der Herr ist mein Vertrauen, mein Ver-".

Der Herr ist mein Vertrauen, mein Ver-

Musical staff for the vocal line, continuing the lyrics.

Musical staff for the vocal line, continuing the lyrics.

Musical staff for the vocal line, continuing the lyrics.

Musical staff for the vocal line, continuing the lyrics.

Musical staff for the vocal line, continuing the lyrics.

Ende.

Musical staff for the vocal line, ending with the word "Ende".

Empty musical staff.

Empty musical staff.

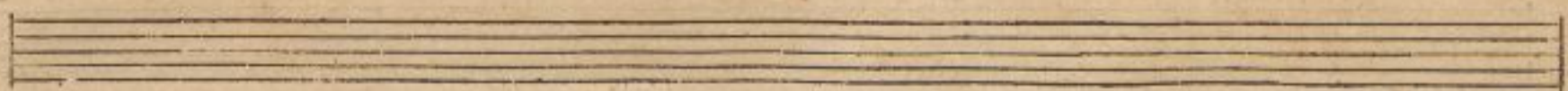
Empty musical staff.

Flöten.

Violinen.

Bratsche.

trau-en, er ließ sich gnä = = = dig schatten, als al-le Hoff-nung sank, al-le

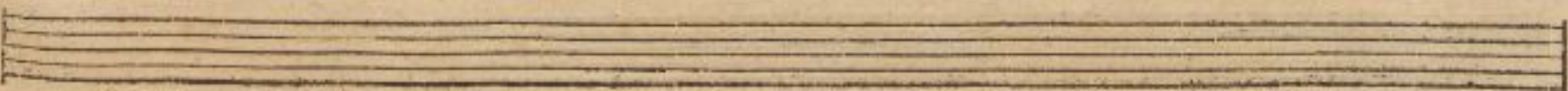
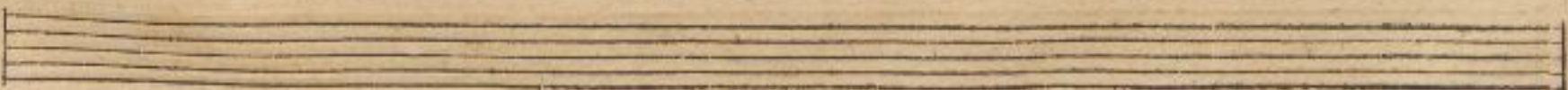


Flöten.

Violinen.

Bratsche.

Hoff-nung sank,



Flöten.

Violinen.

Bratsche.

als al-le Hoff-nung sank.

Flöten.

Violinen.

Bratsche.

Vom Zeichen.

Erste Israelitin.

Recitativ.

Wie nah war uns der Tod! und, o! wie wunder-bar er-rettet uns durch dich der E-wi-ge von der Ge-fahr, die ü-ber unsern Häuptern war! Wie schlägt in unsrer Brust das Herz, von Dankbarkeit gerührt, und von der Neu-e Schmerz, daß wir dem Ew'gen nicht die Zu-ver-sicht geweiht, die je-ner Schuld ge-büh-ret, mit der er uns be-wacht, und uns-re Schritte füh-ret.

Andantino.

Arie.

Wie nah war uns der Tod! und, o! wie wunder-bar er-rettet uns durch dich der E-wi-ge von der Ge-fahr, die ü-ber unsern Häuptern war! Wie schlägt in unsrer Brust das Herz, von Dankbarkeit gerührt, und von der Neu-e Schmerz, daß wir dem Ew'gen nicht die Zu-ver-sicht geweiht, die je-ner Schuld ge-büh-ret, mit der er uns be-wacht, und uns-re Schritte füh-ret.

Violinen.

Bratsche.

Vor des Mit-tags

6 6 4 3 8 7 8 6 5

Violinen.

Bratsche.

hei-ßen Strahlen senkt ihr Haupt die Blu-me nie-der; küb-ler

6 6 5 6 2 6 6 7 4 3

Violinen.

Bratsche.

Thau be-deckt — das Land, und die Blu-me hebt sich wie-der,

6 7 6 6 7 6 5 4

Violinen.

Bratsche.

duf = tet, duf = tet, und er = freut den Blick, er = freut

Violinen.

Bratsche.

Violinen.

Bratsche.

den

Violinen.

Bratsche.

Blick.

This system contains three staves. The top staff is for Violins, the middle for Viola, and the bottom for Cello/Double Bass. The music is in 3/4 time with a key signature of one flat. The Cello/Double Bass part includes figured bass notation: 8, 7 1/2, 8, 9, 5, 6, 6 1/2, 5, 6, 4 1/2, 6, 6, 7 1/2.

Violinen.

Bratsche.

This system contains three staves. The top staff is for Violins, the middle for Viola, and the bottom for Cello/Double Bass. The music continues with similar notation to the first system.

Violinen.

Bratsche.

Vor des Mit - tags

This system contains three staves. The top staff is for Violins, the middle for Viola, and the bottom for Cello/Double Bass. The lyrics 'Vor des Mit - tags' are written below the Cello/Double Bass staff.

Violinen.

Bratsche.

bei = sen Strahlen senkt ihr Haupt die Blu = me nie = der, füh = ler

Violinen.

Bratsche.

Thau be = deckt das Land, und die Blu = me — hebt sich

Violinen.

Bratsche.

mie = der, duf = tet, duf = tet, und er = freut den Blick, er =

Ellen Bogler Brachvogel
Berlin
Klosterstrasse 19.

Violinen.

Bratsche.

freut

This system contains the first five staves of music. The top two staves are for Violins (Violinen), the third for Viola (Bratsche), and the fourth for a vocal line. The vocal line includes the word 'freut'. The bottom staff is the bass line. The key signature has one flat (F major or D minor), and the time signature is 3/4. The music consists of quarter and eighth notes, with some rests.

Violinen.

Bratsche.

This system contains the next five staves of music. It follows the same instrumentation as the first system. The vocal line continues with a similar melodic line. The notation includes various note values and rests.

Violinen.

Bratsche.

er = freut den Blick.

This system contains the final five staves of music on the page. The vocal line includes the text 'er = freut den Blick.'. The notation includes various note values, rests, and dynamic markings like 'p' (piano). The bottom staff includes figured bass notation (fingerings) such as 6, 5, 6, 6, 6.

Violinen.

Bratsche.

ma - ten Gie - ber die ver - loh - ne Kraft zu = = =

Detailed description: This system contains the first three staves of music. The top two staves are for Violins (Violinen.) and the bottom two are for Viola (Bratsche.). The music is in G major and 3/4 time. The vocal line is written in the second system, with lyrics: "ma - ten Gie - ber die ver - loh - ne Kraft zu = = =". The lyrics are aligned with the vocal notes. There are some performance markings like 'p' and 'f'.

Violinen.

Bratsche.

rück, die ver - loh - ne Kraft zu - rückt.

Detailed description: This system contains the next three staves of music. The top two staves are for Violins (Violinen.) and the bottom two are for Viola (Bratsche.). The music continues in G major and 3/4 time. The vocal line is written in the second system, with lyrics: "rück, die ver - loh - ne Kraft zu - rückt.". There are performance markings like 'mf' and 'tr'.

Violinen.

Bratsche.

Vom Zeichen.

Detailed description: This system contains the final three staves of music on the page. The top two staves are for Violins (Violinen.) and the bottom two are for Viola (Bratsche.). The music continues in G major and 3/4 time. The instruction "Vom Zeichen." is written at the end of the system. There are performance markings like 'tr' and 'ffff'.

Adagio.

Accompagnement.

Violinen.

Bratsche.

Moses.

Bass.

O Freunde, Kin-der, mein Gebet hat je-nes Lab-sal euch er-steht, das eu-re Kraft verjüngt, das

Violinen.

Bratsche.

Bass.

le-ben euch er-hält. Doch einst, vor meinen Blicken seh' ich die Zukunft

Violinen.

Bratsche.

Bass.

auf-gehellt, einst wird für Adams sünd'ge Welt ein an-de-rer zum Richter se-hen.

Harvard University - Eda Kuhn Loeb Music Library / Bach, Carl Philipp Emanuel, 1714-1788. [Israeliten in der Wüste]. Die Israeliten in der Wüste : ein Oratorium / in Musik gesetzt von Carl Philipp Emanuel Bach. Hamburg : Im Verlage des Autors, 1775. Merritt Mus 627.2.511.3

Violinen.
Bratsche.

Gott wird ein gnädig Ohr auf sei-ne Bit-ten len-ken, und die, für die er steht, mit

4 3 6 6 7 2

Violinen.
Bratsche.

ew'-ger Wonne tränken: die sich voll Zu-ver-sicht ihm nah'n.

6 7 6 4 5 2 4 3 = 4 2 5 6 7 6 2

Violinen.
Bratsche.

In ein voll-kommners Ea-na-an, o Freun-de, werden sie auf sei-nen Spuren

5 6 7 8 4 3 7

Violinen.

Bratsche.

ge-hen. Ich bin bey euch sein schwaches Bild!

Violinen.

Bratsche.

Er wird, wenn nun der Bei-ten Lauf er-füllt, in sterb-li-che Gestalt ver-

Violinen.

Bratsche.

hält, die menschl-iche Na-tur er-hö-hen.

Allegro.

*Ellen Bogler Brachvogel
Berlin
Makatestrasse 12.*

Violin.

Bratsche.

Dies ist der Held, des Weibes Saame, der mit der Schlange kämpft, und

6

Violinen.

Bratsche.

Adagio.

ihr den Kopf zertritt. Er kommt, er kommt, und bringt den Frieden mit,

5b 4 4 7

Violinen.

Bratsche.

und Heil und Segen ist sein Na-me.

5b 6b *taflo.*

Zweyte Israelitin.

Recitativ.

Be-neidenswerth, die ih-ren Sohn ihn nennt! O, wie das Herz in mir vor fro-her Regung brennt! den

Fluch, den Evens Fall auf ih-re Kinder brachte, ruft dann des Richters Mund zu-rück; die Schöpfung lä-chelt

dann der Menschen hei-tern Blick, wie sie in ih-rem Frühling lach-te.

Arie.

Andante.

Violinen.

Bratsche.

Zweyte Israelitin.

Violinen.

Bratsche.

se - lig, o se - lig, wenn der Herr ge - währet, den Sei - land, den mein Wunsch be-

Harvard University - Eda Kuhn Loeb Music Library / Bach, Carl Philipp Emanuel, 1714-1788. [Israeliten in der Wüste]. Die Israeliten in der Wüste : ein Oratorium / in Musik gesetzt von Carl Philipp Emanuel Bach. Hamburg : Im Verlage des Autors, 1775. Merritt Mus 627.2.511.3

Violinen.

Bratsche.

geb = ret, den Götli - chen zu sehn, den Hei = land, den Götli = chen, den Göt = ti = chen

6 6 4 3 6 6 6 6 5

Violinen.

Bratsche.

Hei = = = land zu sehn, o se = lig, ihn zu sehn!

taflo. pp 5 6

Violinen.

Bratsche.

se = lig, o se = lig,

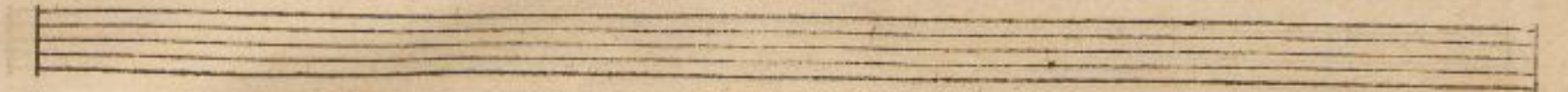
7 6 4 3 6 6

Violinen.

Bratsche.

wem der Herr ge = = währet, den Hei = land, den mein Wunsch be = geh = ret, den Götli = chen zu

7 6 7 4 3 6 2 6 5r



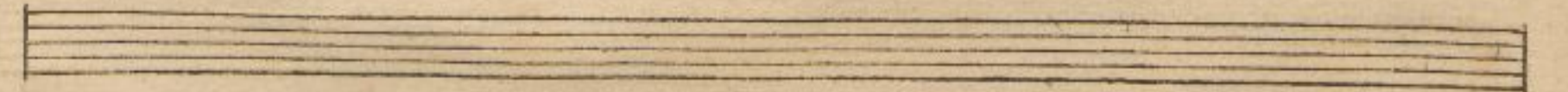
Violinen.

Bratsche.

sehn, den Hei = land, den Götli = chen, den Götli = chen Hei =

2+3 6 7 6 7 6 6 7 6 5r

tasto.

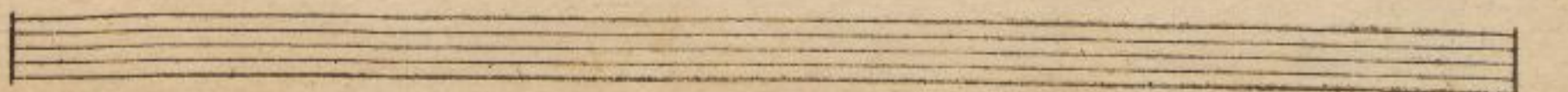


Violinen.

Bratsche.

land zu sehn, o fe = lig, o fe = lig, den Hei =

6 9 3 9 3 6



Violinen.

Bratsche.

land, den Götterli = chen zu sehn, o se = lig, ihn zu sehn!

7 4 3 *tasto.* 5 6

Violinen.

Bratsche.

Ende. Mit Wenn' er =

4 3 4 3 6 6 2 6 4 3

Violinen.

Bratsche.

füll = ten — Thrä = nen = gü = ßen tief hin = ge = beugt zu sei = nen Füßen ihn

2 5 4 7 6 5 4 3 6

Violinen.

Bratsche.

dan - kend zu er - höhn, ihn dan - kend zu er - höhn.

Violinen.

Bratsche.

Da. Vom Zeichen.

Recitativ.

Moses.

Hofft auf den Ew - gen, har - ret sein: er wird der Er - de sich barm - her - zig zei - gen; er

Adagio.

wird den Himmel nei - gen; er wird der Menschheit Glanz er - neun.

Soboen. Poco adagio.

Violinen.

Bratsche.

Discant.

Alt.

Ver = heiß = ner Got = tes, wel = cher A = dams Schuld ver = til = gen

Tenor.

Ver = heiß = ner Got = tes, wel = cher A = dams Schuld ver = til = gen

Baß.

Ver = heiß = ner Got = tes, wel = cher A = dams Schuld ver = til = gen

Baß. unis.

Ver = heiß = ner Got = tes, wel = cher A = dams Schuld ver = til = gen

Violinen.

Bratsche.

sohl, Geschenk der größten Huld, er = schei = ne bald, er = scheine, er = scheine, daß die Er = de auß

sohl, Geschenk der größten Huld, er = schei = ne bald, er = scheine, er = scheine, daß die Er = de auß

sohl, Geschenk der größten Huld, er = schei = ne bald, er = schei = ne, er = scheine, daß die Er = de auß

sohl, Geschenk der größten Huld, er = schei = ne bald, er = schei = ne, er = scheine, daß die Er = de auß

Soboen.

Violinen.

Bratsche.

neu — ein Sig des Friedens wer = de! Sie seufzt nach dir,

neu ein Sig des Friedens wer = de! Sie seufzt nach dir,

neu ein Sig des Friedens wer = de! Sie seufzt nach dir,

neu ein Sig des Friedens wer = de! Sie seufzt nach dir,

8 6 6 5 unis.

Soboen.

Violinen.

Bratsche.

sie seufzt nach dir voll In-brunst, so wie wir nach je-nen Wassern uns — ge-seh-net, die

sie seufzt nach dir voll In-brunst, so wie wir nach je-nen Wassern uns — ge-seh-net, die

sie seufzt nach dir voll In-brunst, so wie wir nach je-nen Wassern uns ge-seh-net,

sie seufzt nach dir voll In-brunst, so wie wir nach je-nen Wassern uns ge-seh-net,

5 9 8 4 6 6 6 7 6 3

Ellen Bogler Brachvogel
Bechb 2

Hoboen.

Violin.

Bratsche.

un-fern Durst ge = stillt, die un-ser Herz er = quickt, und es mit Freud er = füllt, Ber-

un-fern Durst ge = stillt, die un-ser Herz er = quickt, und es mit Freud er = füllt, Ber-

die unsern Durst gestillt, die unser Herz erquickt, und es mit Freud er = füllt, Ber-

die unsern Durst gestillt, die unser Herz er = quickt, und es mit Freud er = füllt, Ber-

Hoboen.

Violin.

Bratsche.

heiß = ner, er = scheine bald!

heiß = ner, er = scheine bald!

heiß = ner, er = schei = ne bald!

heiß = ner, er = schei = ne bald!

unis.

Choral.

Violinen.

Bratsche.

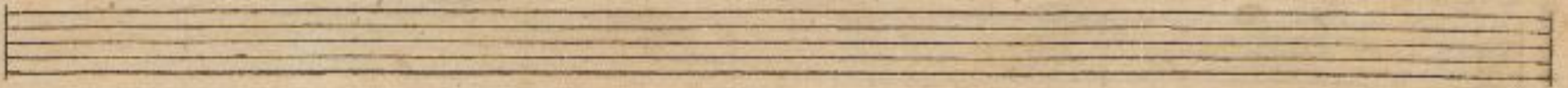
Discant.

Alt. Was der al = ten Vä = ter Schaar höch = ster Wunsch und Seh = nen war, und was

Tenor. Was der al = ten Vä = ter Schaar höch = ster Wunsch und Seh = nen war, und was

Bass. Was der al = ten Vä = ter Schaar höch = ster Wunsch und Seh = nen war, und was

Bass. Was der al = ten Vä = ter Schaar höch = ster Wunsch und Seh = nen war, und was



Violinen.

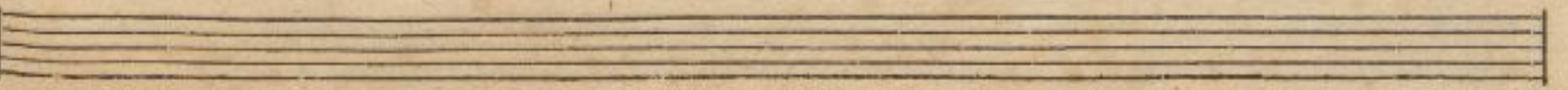
Bratsche.

sie ge = pro = phe = zeyt, ist er = füllt nach Herr = lich = keit.

sie ge = pro = phe = zeyt, ist er = füllt nach Herr = lich = keit.

sie ge = pro = phe = zeyt, ist er = füllt nach Herr = lich = keit.

sie ge = pro = phe = zeyt, ist er = füllt nach Herr = lich = keit.



Harvard University - Eda Kuhn Loeb Music Library / Bach, Carl Philipp Emanuel, 1714-1788. [Israeliten in der Wüste]. Die Israeliten in der Wüste : ein Oratorium / in Musik gesetzt von Carl Philipp Emanuel Bach. Hamburg : Im Verlage des Autors, 1775. Merritt Mus 627.2.511.3

Recitativ.

Violinen.

Bratsche.

Tenor.

Baß.

O Heil der Welt, du bist er-schie-nen, und neu er-schaf-fen hast du

Violinen.

Bratsche.

Die. Dich fan-gen, als du kamst, die Se-ra-phi-nen mit himmlisch ho-her We-lo-st

Violinen.

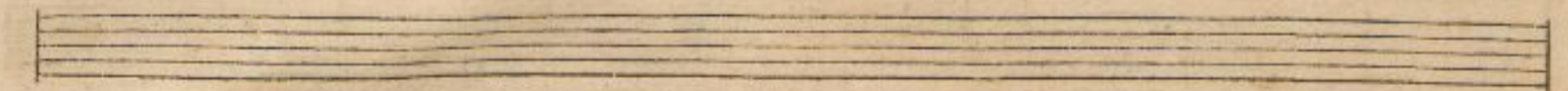
Bratsche.

Die. Du pre-dig-test der größ-ten Weisheit Leh-ren, und hie-fest bei-ne Jün-ger gehn in al-le

Violinen.

Bratsche.

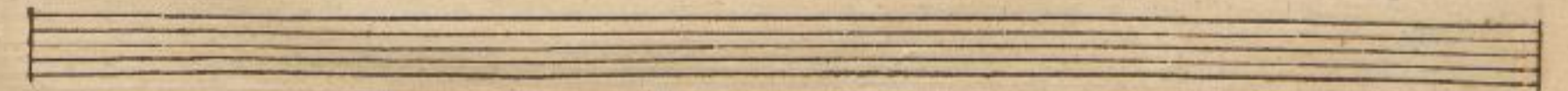
Welt, die Völ-ker zu be-feh-ren, und dei-nen Namen zu er-höhn. Es ist ge-sehn: die



Violinen.

Bratsche.

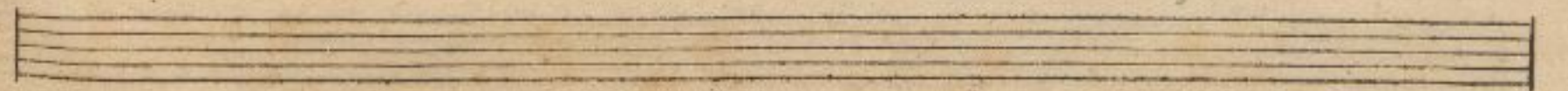
Wahrheit bei-ner Lehren und dei-nes Namens Ruhm er-klang vom Aufgang bis zum Nie-dergang; und täg-lich



Violinen.

Bratsche.

muß dein Reich sich meh-ren.



1. Tromp.

1. Tromp. Musical staff with treble clef, 3/4 time signature, and notes.

2. Tromp.

2. Tromp. Musical staff with treble clef, 3/4 time signature, and notes.

3. Tromp.

3. Tromp. Musical staff with treble clef, 3/4 time signature, and notes.

Pauken.

Pauken. Musical staff with bass clef, 3/4 time signature, and notes.

1. Horn.

1. Horn. Musical staff with treble clef, 3/4 time signature, and notes.

2. Horn.

2. Horn. Musical staff with treble clef, 3/4 time signature, and notes.

1. Oboe.

1. Oboe. Musical staff with treble clef, 3/4 time signature, and notes.

2. Oboe.

2. Oboe. Musical staff with treble clef, 3/4 time signature, and notes.

1. Violin.

1. Violin. Musical staff with treble clef, 3/4 time signature, and notes.

2. Violin.

2. Violin. Musical staff with treble clef, 3/4 time signature, and notes.

Bratsche.

Bratsche. Musical staff with treble clef, 3/4 time signature, and notes.

Discant.

Discant. Musical staff with bass clef, 3/4 time signature, and notes.

Alt.

Alt. Musical staff with bass clef, 3/4 time signature, and notes.

Tenor.

Tenor. Musical staff with bass clef, 3/4 time signature, and notes.

Baß.

Baß. Musical staff with bass clef, 3/4 time signature, and notes.

Baß.

Baß. Musical staff with bass clef, 3/4 time signature, and notes. Includes markings: 4 = 7 = 8, 6, unis., 7 5 6, unis.

Empty musical staff.

Empty musical staff.

1. Tromp.

2. Tromp.

3. Tromp.

Pauken.

1. Horn.

2. Horn.

1. Oboe.

2. Oboe.

1. Violin.

2. Violin.

Bratsche.

Laß — dein Wort, — das uns er = schallt, dein Wort, das uns er = schallt, mit ent-

Laß — dein Wort, — das uns er = schallt, dein Wort, das uns er = schallt, mit ent-

Laß dein Wort, das uns er = schallt, dein Wort, das uns er = schallt, mit ent-

Laß dein Wort, das uns er = schallt, dein Wort, das uns er = schallt, mit ent-

Ellen Bogler Brachvogel

Berlin

Kotelstrasse 19.

1. Tromp.

2. Tromp.

3. Tromp.

Pauken.

1. Horn.

2. Horn.

1. Hoboe.

2. Hoboe.

1. Violin.

2. Violin.

Bratsche.

zu = den = der Ge = walt tief in uns = re Her = zen drin = gen; mit ent = zu = den =

zu = den = der Ge = walt tief in uns = re Herzen drin = gen; mit ent = zu = den =

zu = den = der Ge = walt tief in uns = re Herzen drin = gen; mit ent = zu = den =

zu = den = der Ge = walt tief in uns = re Herzen drin = gen; mit ent = zu = den =

4 3 6 5 - 6 6 4 4 6 *taflo.*

1. Tromp.

2. Tromp.

3. Tromp.

Pauken.

1. Horn.

2. Horn.

1. Hoboe.

2. Hoboe.

1. Violin.

2. Violin.

Bratsche.

der — Ge = walt tief in uns-re Herzen bringen, — tief in uns = re

der Ge = walt tief in uns-re Herzen drin-gen, tief in uns = re

der Ge = walt tief in uns-re Herzen drin = gen, tief in uns = re

der Ge = walt tief in uns-re Herzen drin = gen, tief in uns = re

1. Tromp.

2. Tromp.

3. Tromp.

Pauken.

1. Horn.

2. Horn.

1. Hoboe.

2. Hoboe.

1. Violin.

2. Violin.

Bratsche.

Her-zen dein = gen;

laß es gu = te Fruch = te

Her-zen dein = gen;

laß es gu = te Früchte

Her-zen dein = gen;

laß es gu = te Früchte

Her-zen dein = gen;

laß es gu = te Früchte

1. Tromp.

2. Tromp.

3. Tromp.

Daucken.

1. Horn.

2. Horn.

1. Hoboe.

2. Hoboe.

1. Violin.

2. Violin.

Bratsche.

brin - gen, die dein Va - ter - herz er = freun, die dein Water - herz er = freun, gu - te Früchte laß

brin - gen, die dein Va - ter - herz er = freun, die dein Water - herz er = freun, gu - te Früchte laß

brin - gen, die dein Va - ter - herz er = freun, die dein Water - herz er = freun, gu - te Früchte laß

brin - gen, die dein Va - ter - herz er = freun, die dein Water - herz er = freun, laß

1. Tromp.

First trumpet staff with musical notation and a trill (tr) marking.

2. Tromp.

Second trumpet staff with musical notation.

3. Tromp.

Third trumpet staff with musical notation.

Pauken.

Drum staff with musical notation.

1. Horn.

First horn staff with musical notation.

2. Horn.

Second horn staff with musical notation.

1. Hoboe.

First oboe staff with musical notation and a trill (tr) marking.

2. Hoboe.

Second oboe staff with musical notation and a trill (tr) marking.

1. Violin.

First violin staff with musical notation and a trill (tr) marking.

2. Violin.

Second violin staff with musical notation and a trill (tr) marking.

Bratsche.

Viola staff with musical notation and a trill (tr) marking.

Continuation of the viola staff with musical notation.

— es brin = gen. Laß — uns dir, — all = macht = ge Gü = te,

Continuation of the vocal line with musical notation and a trill (tr) marking.

— es brin = gen. Laß — uns dir, — all = macht = ge Gü = te,

Continuation of the vocal line with musical notation and a trill (tr) marking.

— es brin = gen. Laß uns dir, all = macht = ge Gü = te,

Continuation of the vocal line with musical notation.

— es brin = gen. Laß uns dir, all = macht = ge Gü = te,

Continuation of the vocal line with musical notation and figured bass numbers (6, 5, 4, 3, 2, 1).

Continuation of the vocal line with musical notation.

Empty musical staff.

Empty musical staff.

1. Tromp.

2. Tromp.

3. Tromp.

Daucken.

1. Horn.

2. Horn.

1. Hoboe.

2. Hoboe.

1. Violin.

2. Violin.

Bratsche.

laß uns dir, all = mächt = ge Gü = te, uns = re Brust zum Tem = pel weihn —

laß uns dir, all = mächt = ge Gü = te, uns = re Brust zum Tem = pel weihn —

laß uns dir, all = mächt = ge Gü = te, uns = re Brust zum Tem = pel weihn —

laß uns dir, all = mächt = ge Gü = te, uns = re Brust zum Tem = pel weihn —

taflo.

1. Tromp.

2. Tromp.

3. Tromp.

Pauken.

1. Horn.

2. Horn.

1. Hoboe.

2. Hoboe.

1. Violin.

2. Violin.

Bratsche.

— uns = re Brust zum Tem = pel weihn!

— uns = re Brust zum Tem = pel weihn!

uns = re Brust zum Tem = pel weihn!

uns = re Brust zum Tem = pel weihn!

Ellen Bogler Brachvogel
Berlin
Klosterstrasse 19.

1. Tromp.

Musical staff for 1. Tromp. (Trumpet 1) in G major, 3/4 time, featuring a melodic line with a trill (tr) in the final measure.

2. Tromp.

Musical staff for 2. Tromp. (Trumpet 2) in G major, 3/4 time, featuring a melodic line with a trill (tr) in the final measure.

3. Tromp.

Musical staff for 3. Tromp. (Trumpet 3) in G major, 3/4 time, featuring a melodic line with a trill (tr) in the final measure.

Pauken.

Musical staff for Pauken (Drum) in G major, 3/4 time, featuring a rhythmic pattern.

1. Horn.

Musical staff for 1. Horn in G major, 3/4 time, featuring a melodic line with a trill (tr) in the final measure.

2. Horn.

Musical staff for 2. Horn in G major, 3/4 time, featuring a melodic line with a trill (tr) in the final measure.

1. Hoboe.

Musical staff for 1. Hoboe in G major, 3/4 time, featuring a melodic line with a trill (tr) in the final measure.

2. Hoboe.

Musical staff for 2. Hoboe in G major, 3/4 time, featuring a melodic line with a trill (tr) in the final measure.

1. Violin.

Musical staff for 1. Violin in G major, 3/4 time, featuring a melodic line with a trill (tr) in the final measure.

2. Violin.

Musical staff for 2. Violin in G major, 3/4 time, featuring a melodic line with a trill (tr) in the final measure.

Bratsche.

Musical staff for Bratsche (Viola) in G major, 3/4 time, featuring a melodic line with a trill (tr) in the final measure.

Empty musical staff with a treble clef and key signature of two flats.

Empty musical staff with a treble clef and key signature of two flats.

Empty musical staff with a treble clef and key signature of two flats.

Empty musical staff with a bass clef and key signature of two flats.

Musical staff for figured bass with figured bass notation: 7 5 6, 6 6, 2 6, 4 3, 3.

Empty musical staff.

Empty musical staff.

C R D E.