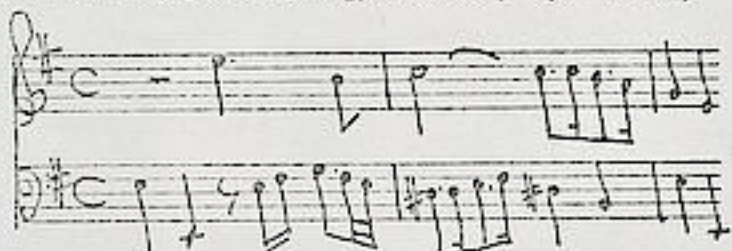


Fasch, Johann Friedrich (1688-1758)

BRD DS Mus.ms.1184/11

Ouverture/<sup>e</sup>/2 Flaut.Trav /2 Hautb:/2 Violin/Viola/Fagott/e/  
Cembalo./[Incipit]/Fasch / (e-moll)



[ohne Satzbez.] C/3/4 -  
Air 3/4 - Bourée C - Air  
C - Gavotte C - Menuet  
1,2 3/4.

Ms ca.1742/43 (Graupner). 35 x 22 cm. WZ: DS 18.

9 St.: vl 1,2, vla, cembalo (unbez.), fl 1,2, ob 1,2, fag.  
je 2 Bl.

3337

1184<sup>11</sup>

# Overture

a

2 Flaut. Fav.

2 Flaut. b.

2 Violini

Viola

Fagotto

fol. 1-18.

M.

e

Cembalo.



Fasch

1184/11

Overture.

Flaut: Grav: 1mo.

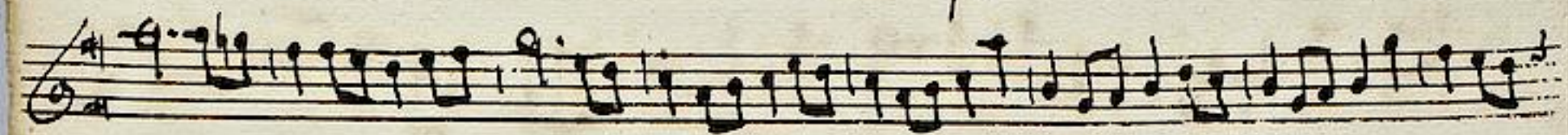


Handwritten musical score on 15 staves. The notation includes various rhythmic values, accidentals, and dynamic markings such as 't' and 'f'. The piece concludes with a double bar line and the instruction 'Da Capo.'


*Power*

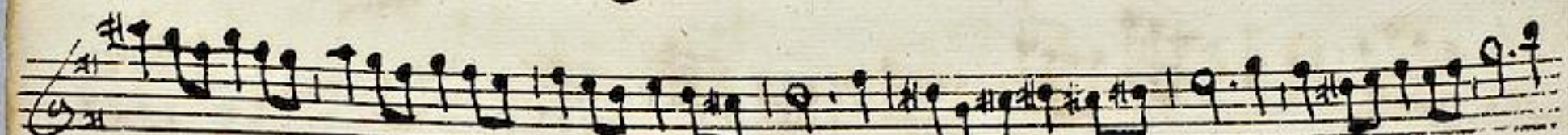



*Douree* 





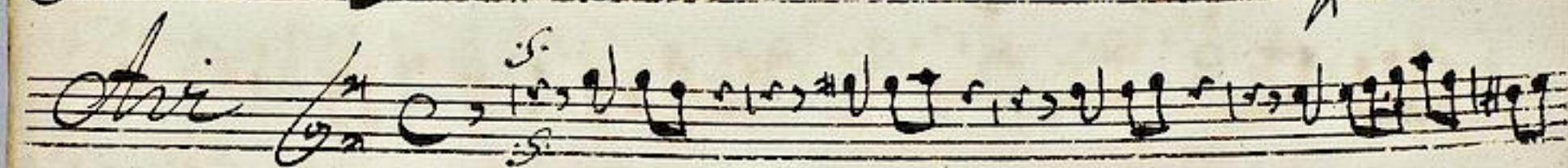










*Ari* 









*Gavotte* 



Handwritten musical score on five staves. The notation includes treble clefs, a key signature of one sharp (F#), and a 2/4 time signature. The music features a variety of note values, including eighth and sixteenth notes, and rests. Dynamic markings such as *p.* (piano) and *f.* (forte) are present. The piece concludes with a double bar line and a decorative flourish.

Section header: *Menuet* (Minuet). The notation continues on five staves, maintaining the same key signature and time signature. A tempo or performance instruction *Allegretto* is written below the first staff of this section.

Handwritten musical score on five staves, continuing the *Menuet* section. The notation is consistent with the previous section, featuring treble clefs, a key signature of one sharp, and a 2/4 time signature. It includes various rhythmic patterns and dynamic markings.

Section header: *Menuet* (Minuet). The notation begins on five staves with a key signature of one sharp and a 2/4 time signature. A tempo or performance instruction *Allegretto* is written below the first staff.

Handwritten musical score on five staves, continuing the *Menuet* section. The notation includes treble clefs, a key signature of one sharp, and a 2/4 time signature. The piece ends with a double bar line and a decorative flourish. There is a large scribble at the bottom right of the page.



Ouverture.

Flaut. Fav. 2do.

A handwritten musical score for a flute part, consisting of 15 staves. The music is written in a single system with a treble clef and a key signature of one sharp (F major). The time signature is common time (C). The notation includes various rhythmic values such as eighth, sixteenth, and thirty-second notes, as well as rests and trills. The paper is aged and shows some staining.

Handwritten musical score on ten staves. The notation includes treble clefs, a key signature of one sharp (F#), and a 3/4 time signature. The music features various note values, rests, and dynamic markings such as 't' and 'p.'. The piece concludes with the handwritten text 'Da Capo' followed by a double bar line.

*Power*





*Bourée*

*p.* *f.* *p.* *f.* *p.* *f.*

*Aria*

*Larg.*

*p.* *f.* *p.* *f.*

*Finale*

*Da Capo*

*pp.* *f.*

Handwritten musical notation on six staves. The notation includes various note values (quarter, eighth, sixteenth notes), rests, and dynamic markings such as 'p.' (piano) and 'f.' (forte). The music is written in a single system across the staves.

*Menuet* *allaternat.*

Handwritten musical notation on four staves, continuing the piece. It features various rhythmic patterns and articulation marks. The notation is dense and fills the staves.

*Menuet 2.*

Handwritten musical notation on three staves, concluding the piece. It ends with a double bar line and a scribbled-out section on the right side of the page.

Ouverture.

Hautbois I<sup>mo</sup>.

A handwritten musical score for the Overture, Hautbois I part. The score consists of 15 staves of music, each with a treble clef and a key signature of one sharp (F#). The notation includes various rhythmic values, accidentals, and dynamic markings such as *p.* and *t*. The paper is aged and shows some staining.

A handwritten musical score on aged paper, consisting of 14 staves. The notation is in a single system with a treble clef and a key signature of one sharp (F#). The piece is titled "Arie" and "Da Capo". The score includes various musical notations such as notes, rests, and dynamic markings like "p." (piano) and "f." (forte). There are also some markings that look like "t" or "t." above notes. The piece concludes with a double bar line and the words "Da Capo" written in a decorative script.

*Bourée*

*Source*

Handwritten musical score for 'Source' in G major, 3/4 time. It consists of ten staves of music. The notation includes treble clefs, a key signature of one sharp (F#), and a common time signature. The music features a mix of eighth and sixteenth notes, with dynamic markings of *p.* and *f.* throughout. The paper shows signs of age and wear.

*Aria*

*Largo*

Handwritten musical score for 'Aria' in G major, 3/4 time. It consists of seven staves of music. The notation includes treble clefs, a key signature of one sharp (F#), and a common time signature. The music is characterized by a slower tempo, indicated by the 'Largo' marking. It features a mix of eighth and sixteenth notes, with dynamic markings of *low.*, *p.*, *f.*, and *tuhi*. The paper shows signs of age and wear.

*Gavotte*

Handwritten musical score for 'Gavotte' in G major, 3/4 time. It consists of three staves of music. The notation includes treble clefs, a key signature of one sharp (F#), and a common time signature. The music features a mix of eighth and sixteenth notes, with dynamic markings of *p.* and *f.*. The paper shows signs of age and wear.

Handwritten musical notation on five staves. The notation includes various note values, rests, and dynamic markings such as *p.* and *f.* The music is written in a single system across the staves.

Musical staff with the word *Menutt* written in a cursive hand. Below the word, there are some markings that appear to be *1.* and *alternat.* The staff contains musical notation.

Handwritten musical notation on five staves, continuing the piece. The notation includes various note values, rests, and dynamic markings such as *p.* The music is written in a single system across the staves.

Musical staff with the word *Menutt* written in a cursive hand. Below the word, there are some markings that appear to be *2.* and *4.* The staff contains musical notation.

Handwritten musical notation on five staves, concluding the piece. The notation includes various note values, rests, and dynamic markings. The piece ends with a double bar line and a decorative flourish.

Ouverture.

Hautbois 2<sup>o</sup>.

A page of handwritten musical notation for the Overture, specifically for the second oboe part. The score consists of 15 staves of music. The notation is in a single system, with each staff containing a line of music. The key signature is one sharp (F#), and the time signature is common time (C). The music features a variety of rhythmic patterns, including eighth and sixteenth notes, and rests. There are several dynamic markings, including 'p.' (piano) and 'f.' (forte), and some articulation marks like '+' and 'i.'. The paper is aged and shows some staining.

Handwritten musical score on ten staves. The notation includes treble clefs, a key signature of one sharp (F#), and a 3/4 time signature. The music features various note values, rests, and dynamic markings such as 'p.' (piano). The score concludes with a double bar line and a fermata-like flourish.

*Source*





*Bourée*

*p. f.*

*p. f.*

*p.*

*p.*

*Adria*

*Largo.*

*p. p. f.*

*p. f.*

*p.*

*p. pp. f.*

*Da Capo*

*Favotte*

*p. f.*

*p. f.*

Handwritten musical notation on two staves. The top staff is in treble clef with a key signature of one sharp (F#) and a 3/4 time signature. The bottom staff is in bass clef with a key signature of one sharp (F#) and a 3/4 time signature. Dynamics include *f.* and *p.*

Musical notation on two staves. The top staff is in treble clef with a key signature of one sharp (F#) and a 3/4 time signature. The word "Minnuet" is written in cursive above the staff. The bottom staff is in bass clef with a key signature of one sharp (F#) and a 3/4 time signature. The word "alternat." is written below the staff.

Handwritten musical notation on two staves. The top staff is in treble clef with a key signature of one sharp (F#) and a 3/4 time signature. The bottom staff is in bass clef with a key signature of one sharp (F#) and a 3/4 time signature.

Handwritten musical notation on two staves. The top staff is in treble clef with a key signature of one sharp (F#) and a 3/4 time signature. The bottom staff is in bass clef with a key signature of one sharp (F#) and a 3/4 time signature.

Handwritten musical notation on two staves. The top staff is in treble clef with a key signature of one sharp (F#) and a 3/4 time signature. The bottom staff is in bass clef with a key signature of one sharp (F#) and a 3/4 time signature.

Handwritten musical notation on two staves. The top staff is in treble clef with a key signature of one sharp (F#) and a 3/4 time signature. The bottom staff is in bass clef with a key signature of one sharp (F#) and a 3/4 time signature. Dynamics include *f.*

Handwritten musical notation on two staves. The top staff is in treble clef with a key signature of one sharp (F#) and a 3/4 time signature. The bottom staff is in bass clef with a key signature of one sharp (F#) and a 3/4 time signature.

Musical notation on two staves. The top staff is in treble clef with a key signature of one sharp (F#) and a 3/4 time signature. The word "Minnuet" is written in cursive above the staff. The bottom staff is in bass clef with a key signature of one sharp (F#) and a 3/4 time signature.

Handwritten musical notation on two staves. The top staff is in treble clef with a key signature of one sharp (F#) and a 3/4 time signature. The bottom staff is in bass clef with a key signature of one sharp (F#) and a 3/4 time signature.

Handwritten musical notation on two staves. The top staff is in treble clef with a key signature of one sharp (F#) and a 3/4 time signature. The bottom staff is in bass clef with a key signature of one sharp (F#) and a 3/4 time signature.

Handwritten musical notation on two staves. The top staff is in treble clef with a key signature of one sharp (F#) and a 3/4 time signature. The bottom staff is in bass clef with a key signature of one sharp (F#) and a 3/4 time signature.

Handwritten musical notation on two staves. The top staff is in treble clef with a key signature of one sharp (F#) and a 3/4 time signature. The bottom staff is in bass clef with a key signature of one sharp (F#) and a 3/4 time signature. A large scribble is present on the bottom staff.

Handwritten musical notation on two staves. The top staff is in treble clef with a key signature of one sharp (F#) and a 3/4 time signature. The bottom staff is in bass clef with a key signature of one sharp (F#) and a 3/4 time signature.

Handwritten musical notation on two staves. The top staff is in treble clef with a key signature of one sharp (F#) and a 3/4 time signature. The bottom staff is in bass clef with a key signature of one sharp (F#) and a 3/4 time signature.

Handwritten musical notation on two staves. The top staff is in treble clef with a key signature of one sharp (F#) and a 3/4 time signature. The bottom staff is in bass clef with a key signature of one sharp (F#) and a 3/4 time signature.

Ouverture.

Violino Iuo.

Handwritten musical score for Violino Iuo. The page contains 15 staves of music in G major, 2/4 time. The notation includes various rhythmic values, accidentals, and dynamic markings such as 't' and 'p'. The paper is aged and shows some staining.

A handwritten musical score on aged paper, consisting of ten staves. The first four staves contain a piece of music with a treble clef, a key signature of one sharp (F#), and a 3/4 time signature. The notation includes various note values, rests, and dynamic markings such as *tr.* (trills) and *pp.* (pianissimo). The fifth staff is the beginning of a section titled "Arie" in a cursive hand. This section continues through the remaining six staves, featuring more complex rhythmic patterns, including sixteenth and thirty-second notes, and dynamic markings like *pp.*, *f* (forte), and *f. Sop.* (for soprano). The piece concludes with a double bar line and a final flourish.

*Source*

*Bourée*

*p.* *f.*

*p.* *f.*

*f.*

*p.*

*Aria*

*Largo.*

*p.* *f.*

*p.* *p.*

*f.* *Da Capo*

*Gavotte*

*p.*

Handwritten musical notation on five staves. The notation includes treble clefs, a key signature of one sharp (F#), and a 2/4 time signature. The music features various note values, rests, and dynamic markings such as 'p.' and 'f.'.

*Menuet*

*alternat.*

Handwritten musical notation on five staves, continuing the piece. It includes the word 'Menuet' written above the first staff and 'alternat.' written below the second staff. The notation continues with treble clefs, a key signature of one sharp, and a 2/4 time signature.

*Menuet*

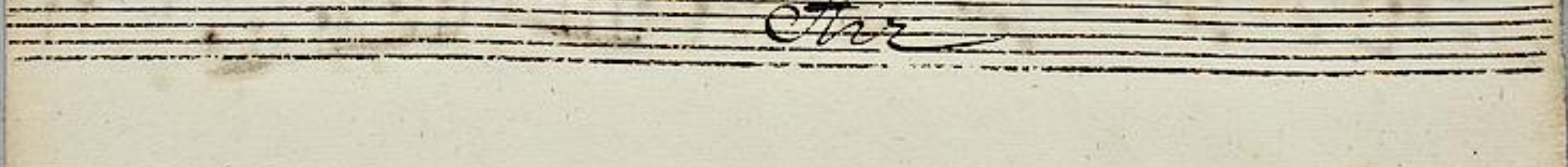
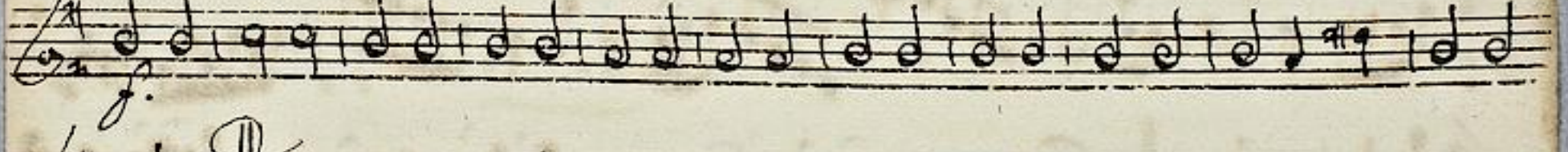
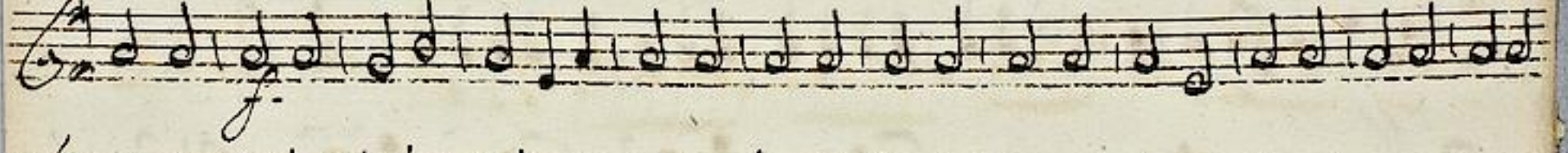
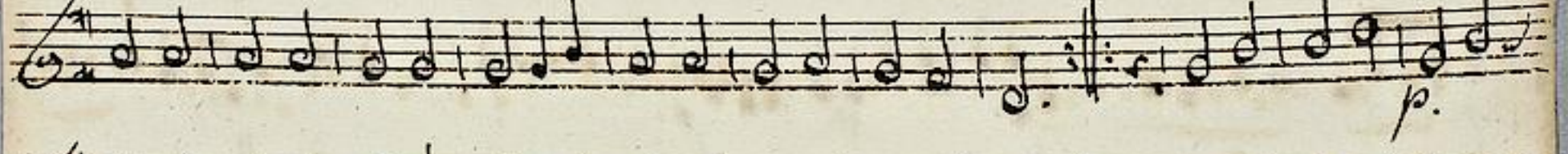
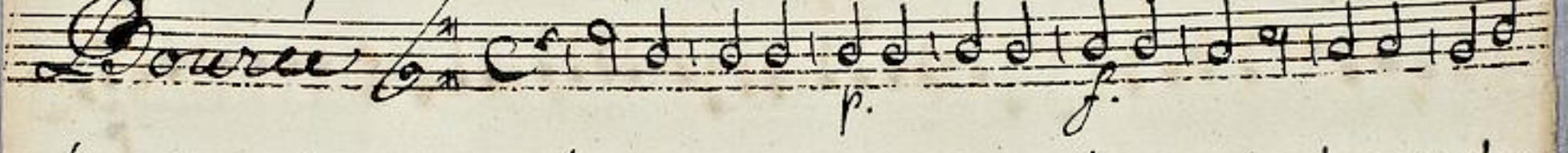
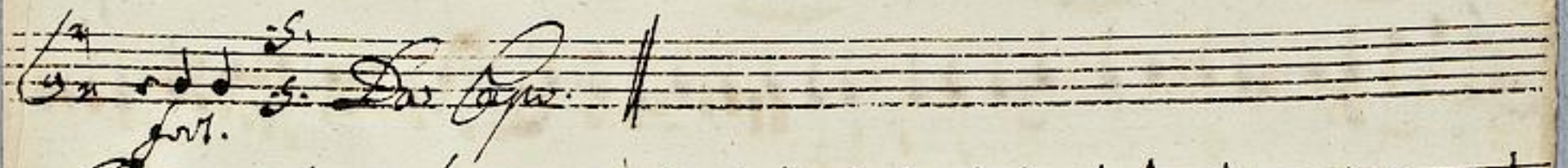
*buen*

Handwritten musical notation on five staves, concluding the piece. It includes the word 'Menuet' written above the first staff and 'buen' written below the second staff. The notation ends with a double bar line and a decorative flourish.

Ouverture

Violino 2do.

The image shows a page of handwritten musical notation for the second violin part of an overture. The music is written on 14 staves, each with a treble clef and a key signature of one sharp (F#). The notation includes a variety of rhythmic values, including eighth and sixteenth notes, as well as rests and trills. Dynamic markings such as 't' (trill) and 'p.' (piano) are present throughout the score. The paper is aged and shows some wear at the edges.





*Air* *Largo*

*Fin*

*Favotte*

*Fin*

*Menuet*

*1.* *alternat.*

*Fin*

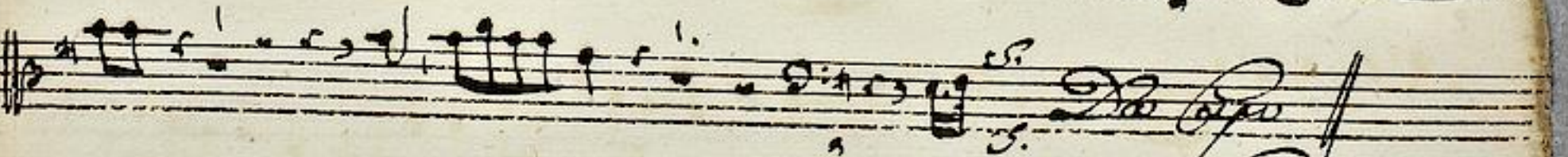
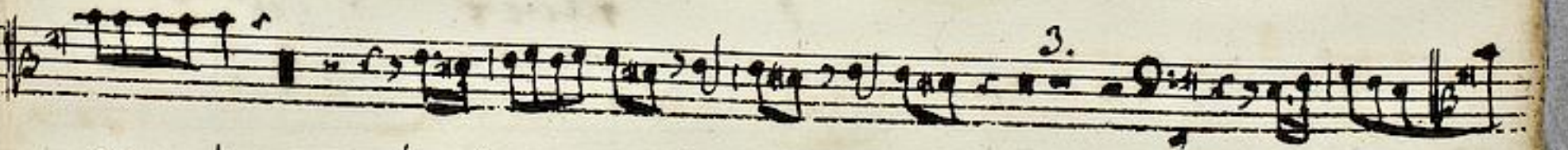
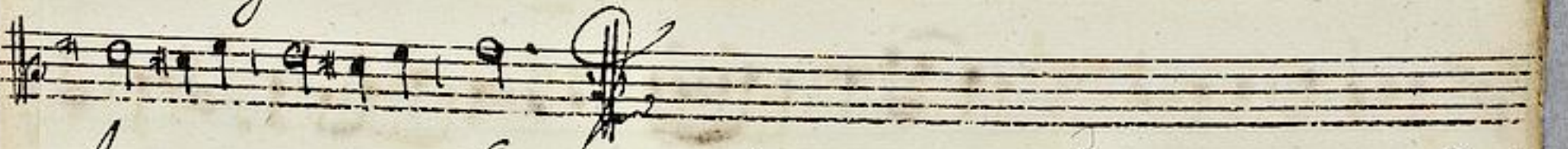
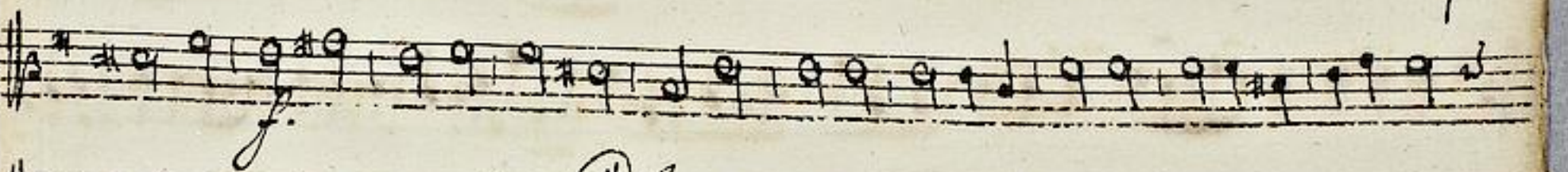
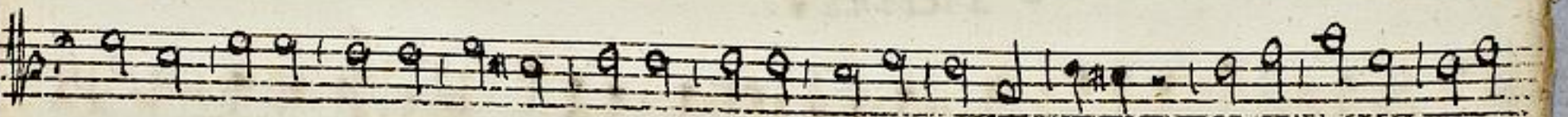
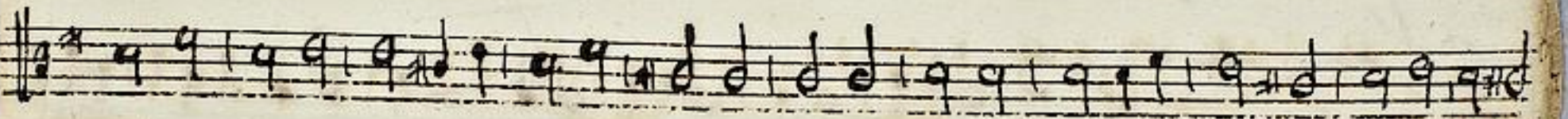
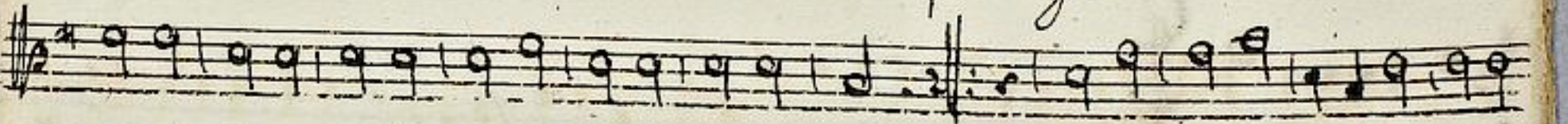
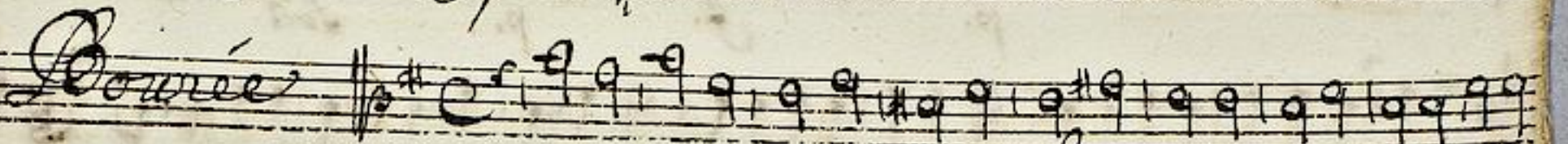
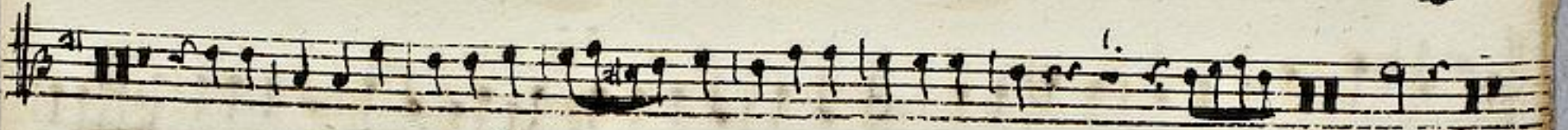
Handwritten musical notation on three staves. The top staff contains a melodic line with various note values and rests. The middle staff continues the melody with similar notation. The bottom staff begins with a dynamic marking 'p.' and ends with the handwritten text 'Admet' and 'faveol.' followed by a double bar line and a scribbled-out section.

A series of ten empty musical staves on the page, with some faint handwritten markings and bleed-through from the reverse side.

Ouverture.

Viola.

Handwritten musical score for Viola, titled "Ouverture." The score consists of 15 staves of music in G major and 2/4 time. The notation includes various note values, rests, and dynamic markings such as "p" and "f". The paper is aged and shows some staining.



*Gavotte*

Gavotte

Handwritten musical score for Gavotte, consisting of seven staves of music in G major and common time. The notation includes various note values, rests, and dynamic markings.

*p.* *f.* *p.* *fort.*

Mennet

Handwritten musical score for Mennet, consisting of six staves of music in G major and 3/4 time. The notation includes various note values, rests, and a final double bar line with a flourish.

*alternat.*

Mennet  
Gavotte

Overture.

Daslon

A handwritten musical score for an overture, consisting of 15 staves of music. The notation is in a single system, with each staff containing a line of music. The music is written in a style characteristic of the 18th or 19th century, with various note values, rests, and dynamic markings. The key signature is one sharp (F#), and the time signature is common time (C). The score includes several dynamic markings: *p.* (piano) and *f.* (forte) are used in the lower staves, and *tutti* is used in several places. There are also some markings that appear to be *sol.* (solo). The paper is aged and shows some staining, particularly in the middle section.

*Aria*

*Source*

*Aria*

*Aria*

Handwritten musical score for the *Aria* section, consisting of six staves. The notation includes various rhythmic values, accidentals, and dynamic markings such as *f.*, *Larg.*, *sol.*, *tutti*, and *bl.*. The music is written in a single system across the staves.

*In Cap.*

Handwritten musical score for the *Favotte* section, consisting of seven staves. The notation includes various rhythmic values, accidentals, and dynamic markings such as *p.* and *f.*. The music is written in a single system across the staves.

*Menuet*

Handwritten musical score for the *Menuet* section, consisting of three staves. The notation includes various rhythmic values, accidentals, and dynamic markings such as *1.* and *alternat.*. The music is written in a single system across the staves.



Handwritten musical score on ten staves. The notation includes various note values, rests, and clefs. The word "Menuet" is written in cursive on the fourth staff. There are some scribbles and corrections in the fifth and sixth staves.

Empty musical staves on the bottom half of the page, showing the five-line structure without any notation.

Overture.

Cembalo.

A handwritten musical score for a cembalo (harpsichord) titled "Overture." The score is written on 15 staves of five-line music paper. The notation includes various rhythmic values, accidentals, and dynamic markings. The first staff begins with a treble clef, a key signature of one sharp (F#), and a common time signature (C). The music is characterized by intricate patterns, including sixteenth and thirty-second notes, and rests. There are several repeat signs (double bar lines with dots) throughout the piece. The final staff concludes with a double bar line and the instruction "a tempo." The paper shows signs of age, with some staining and wear at the edges.



Musical staff with notes and clef.

Musical staff with notes and clef.

*Air* Musical staff with notes and clef.

Musical staff with notes and clef.

Musical staff with notes and clef, ending with *Fin*.

*Bourée* Musical staff with notes and clef.

Musical staff with notes and clef.

Musical staff with notes and clef.

Musical staff with notes and clef.

Musical staff with notes and clef.

Musical staff with notes and clef.

*Aria* Musical staff with notes and clef, starting with *Largo*.

Musical staff with notes and clef.

Musical staff with notes and clef.

Musical staff with notes and clef, ending with *Fin*.

*Favotte*

*Favotte*

Handwritten musical score for 'Favotte' in C major, 3/4 time. The score consists of six staves. The first staff begins with a treble clef, a key signature of one sharp (F#), and a common time signature (C). The music is written in a single melodic line. Dynamic markings include *p.* (piano) and *f.* (forte). The piece concludes with a double bar line and a decorative flourish.

*Menuet*

Handwritten musical score for 'Menuet' in C major, 3/4 time. The score consists of six staves. The first staff begins with a treble clef, a key signature of one sharp (F#), and a common time signature (C). The music is written in a single melodic line. A tempo marking *♩* *allegretto* is present. The piece concludes with a double bar line and a decorative flourish.