

Sonatina in D Major

(The Lady's Ramble to May Fair)
for Trumpet & Organ

Score (02':05'')

John Weldon (1676 - 1736)

Arr. Michel Rondeau

Allegro non troppo $\text{♩} = 75$

Trumpet in C

Organ

6 6 6

Detailed description: This system contains the first four measures of the piece. The Trumpet in C part (top staff) begins with a quarter rest, followed by quarter notes D4, E4, F#4, G4, A4, B4, and a quarter rest. The Organ part (bottom two staves) features a bass line with quarter notes D3, E3, F#3, G3, A3, B3, and a quarter rest, with a '6' below the first measure. The treble staff contains chords: D4-F#4-A4, E4-G4-B4, and F#4-A4-C5.

C Tpt.

Org.

5 6 6

Detailed description: This system contains measures 5 through 8. The C Trumpet part (top staff) has a quarter rest in measure 5, followed by quarter notes D4, E4, F#4, and a quarter rest. The Organ part (bottom two staves) has a bass line with quarter notes D3, E3, F#3, G3, A3, B3, and a quarter rest, with a '6' below the first measure. The treble staff contains chords: D4-F#4-A4, E4-G4-B4, and F#4-A4-C5. Measures 7 and 8 feature a more active organ part with eighth-note patterns in both staves.

C Tpt.

Org.

9 6 6 #

Detailed description: This system contains measures 9 through 12. The C Trumpet part (top staff) has a quarter rest in measure 9, followed by a repeat sign, then quarter notes D4, E4, F#4, and a quarter rest. The Organ part (bottom two staves) has a bass line with quarter notes D3, E3, F#3, G3, A3, B3, and a quarter rest, with a '6' below the first measure. The treble staff contains chords: D4-F#4-A4, E4-G4-B4, and F#4-A4-C5. Measures 11 and 12 feature a more active organ part with eighth-note patterns in both staves.

Sonatina in D Major - Weldon - Score

2
13

C Tpt.

Org.

6 6

17

C Tpt.

Org.

22

C Tpt.

Org.

6 #7 6 6 6 6 6 6

27

C Tpt.

Org.

6 6

Sonatina in D Major - Weldon - Score

32

C Tpt.

Org.

4/2 6

Detailed description: This system contains measures 32 through 35. The C Tpt. part (top staff) begins with a treble clef, a key signature of two sharps (D major), and a common time signature. It features a melodic line with eighth and sixteenth notes, including a triplet of eighth notes in measure 33. The Organ part (bottom two staves) is in a grand staff with treble and bass clefs. It provides harmonic support with chords and single notes. Measure 34 includes a 4/2 time signature change, and measure 35 includes a 6 time signature change. The system concludes with a double bar line.

36

C Tpt.

Org.

Detailed description: This system contains measures 36 through 39. The C Tpt. part (top staff) continues the melodic line with eighth and sixteenth notes, ending with a half note in measure 39. The Organ part (bottom two staves) continues with harmonic accompaniment, including chords and single notes. Measure 39 ends with a double bar line and repeat dots, indicating the end of the section.

Sonatina in D Major

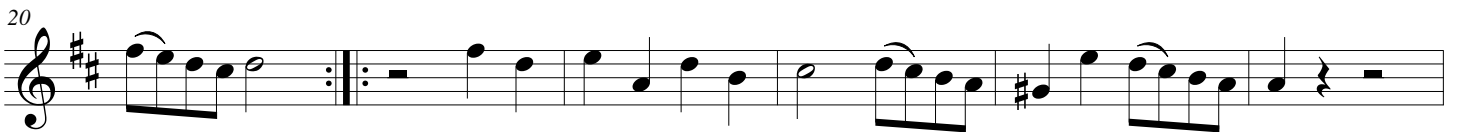
(The Lady's Ramble to May Fair)
for Trumpet & Organ

Trumpet in C

John Weldon (1676 - 1736)

Arr. Michel Rondeau

Allegro non troppo $\text{♩} = 75$



Sonatina in D Major

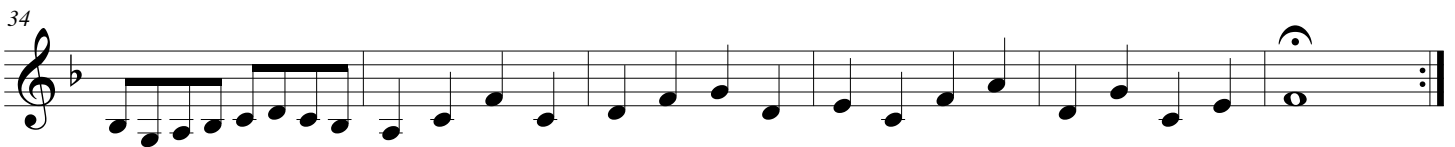
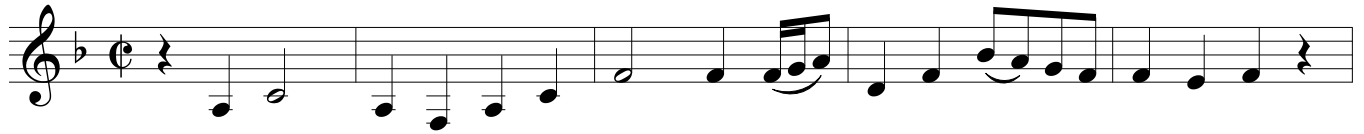
(The Lady's Ramble to May Fair)
for Trumpet & Organ

Trumpet in A

John Weldon (1676 - 1736)

Arr. Michel Rondeau

Allegro non troppo $\text{♩} = 75$



Sonatina in D Major

(The Lady's Ramble to May Fair)
for Trumpet & Organ

John Weldon (1676 - 1736)

Arr. Michel Rondeau

Organ

Trumpet in C

Allegro non troppo $\text{♩} = 75$

Organ

6

6

6

C Tpt.

Org.

6

6

C Tpt.

Org.

6

6

Sonatina in D Major - Weldon - Organ

2

C Tpt.

Org.

13

6

6

C Tpt.

Org.

17

17

C Tpt.

Org.

22

22

6 #7 6 6 6 6 6

C Tpt.

Org.

27

27

6 6

Sonatina in D Major - Weldon - Organ

C Tpt.

Org.

32

32

4/2 6

C Tpt.

Org.

36

36