

Cantata in D (III)

Soprano

Hosanna(4'23'')

Michel Rondeau
1991

Allegro (♩ = circa 100)

10

Ho - san - - - - na, ho -
san - na, ho - san - na, ho - san - na, ho - - - - -
na, ho-san - na, ho-san - na, ho-san - na, ho-san - na,
in ex-cel sis.
Ho-san-na - - - na, ho-san-na - - - na, ho-san-na - - -
na, ho - san-na, - - - ho - san - na, ho - san - na, ho -
san - na, ho - san - - - - na, ho-san - na, ho-san - na,
ho-san - na, ho - san - na, ho - san
na, in ex-cel - sis, in ex-cel - sis,
in ex-cel - - - - - sis, in ex-cel - sis, -

Cantata in D (III) Soprano

2
45



in ex-cel - sis — in ex-cel - - - - -

48



- - - sis, ho - san - na, ho - san - na, ho - san - na, ho -

52



san - na, rit. A - gnus De - i qui tol - - -

57



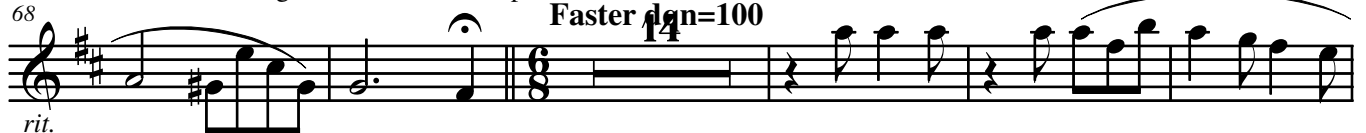
lis pec - ca - - - ta mun - - di, mi - se - re - re no - bis.

63



A - gnus De - i pec - ca - ta mun - di mi - se - re

68



rit. no - bis. Ho-san-na, ho-san - - -

87



- - - na, ho-san - na, ho-san - - - na, In ex-cel -

93



sis in ex-cel - sis, in ex-cel - sis in ex-cel - sis. Ho-san - - na, ho-

99



san - na. Ho-san - na, ho-san - - - na, ho-san - na,

106



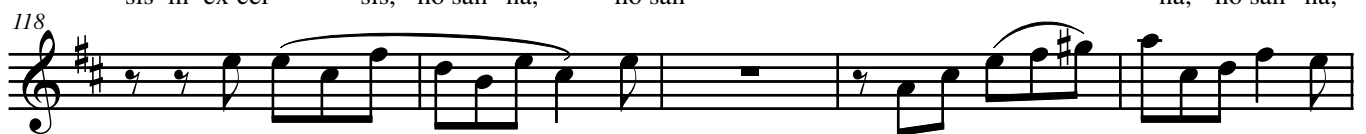
Ho-san - na, ho-san - na in ex-cel - sis in ex-cel -

112



sis in ex-cel - sis, ho-san - na, ho-san - - - na, ho-san - na,

118



ho-san - - - na, in ex-cel - sis in ex-cel - sis,

Cantata in D (III) Soprano


123



in ex-cel - sis in ex - cel - sis. Ho-san - - - na, ho-

Detailed description: This block contains the musical notation for measures 123 through 127. The notation is on a single treble clef staff with a key signature of one sharp (F#). The melody consists of eighth and quarter notes, with some notes beamed together. There are several slurs over the notes. The lyrics are written below the staff, aligned with the notes.

128



san - ha, ho - san - na in ex - cel - sis.

rit.

Detailed description: This block contains the musical notation for measures 128 through 132. The notation is on a single treble clef staff with a key signature of one sharp (F#). The melody continues from the previous block, ending with a double bar line. There are slurs over the notes. The lyrics are written below the staff, aligned with the notes. The word 'rit.' is written above the final note of the phrase 'in ex-cel-sis'.