

# ACT I.

I

*Air I*

Musical score for Air I, measures 1-4. The piece is in G major (one sharp) and 3/2 time. It features a melody with various note values including quarter, eighth, and sixteenth notes, as well as rests. There are asterisks marking specific notes in measures 1, 2, and 3. The score is written on four staves.

*Air 2*

Musical score for Air 2, measures 1-4. The piece is in G major (one sharp) and common time (C). It features a more rhythmic melody with many eighth and sixteenth notes. There are asterisks marking specific notes in measures 2 and 3. The score is written on four staves.

*Air 3*

Musical score for Air 3, measures 1-4. The piece is in G major (one sharp) and 6/4 time. It features a melody with quarter and eighth notes. There are asterisks marking specific notes in measures 1, 2, and 3. The score is written on four staves.

G

*Air 4*

*Air 5*

*Air 6*

*Air 7*

*Air 8*

Musical notation for Air 8, consisting of three staves. The first staff is in treble clef, 3/4 time, with a key signature of one flat (B-flat). It begins with a double bar line and a repeat sign. The second and third staves continue the melody, with the third staff ending with a double bar line.

*Air 9*

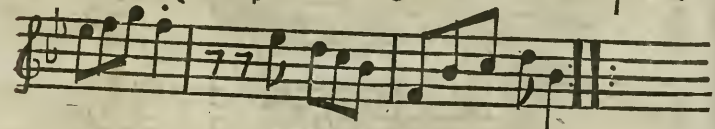
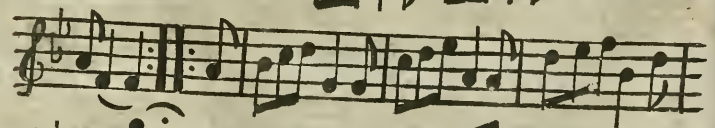
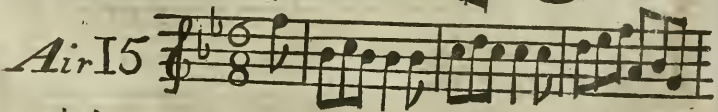
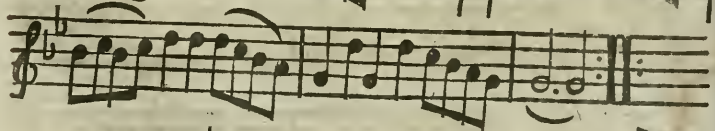
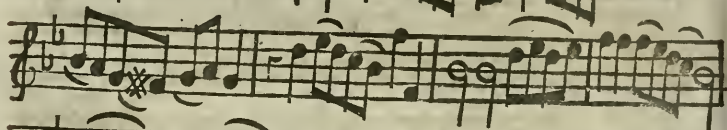
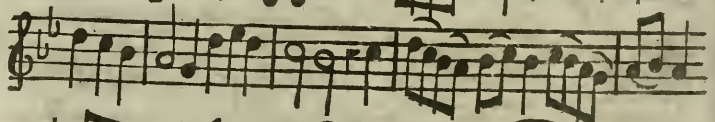
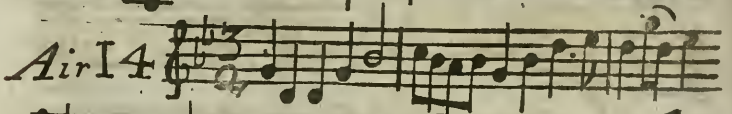
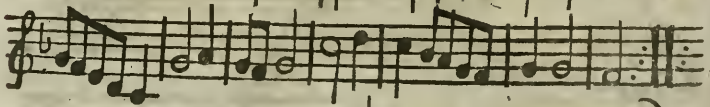
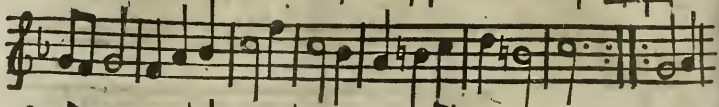
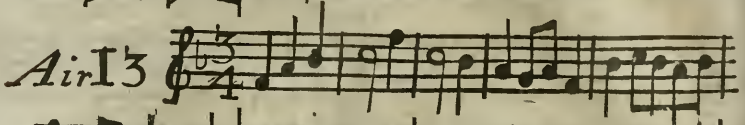
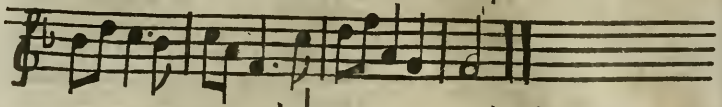
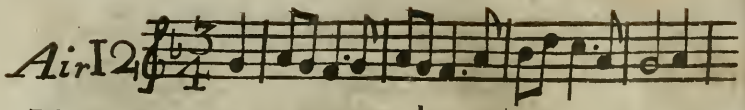
Musical notation for Air 9, consisting of two staves. The first staff is in treble clef, 3/4 time, with a key signature of one flat (B-flat). It begins with a double bar line and a repeat sign. The second staff continues the melody and ends with a double bar line.

*Air 10*

Musical notation for Air 10, consisting of three staves. The first staff is in treble clef, 4/4 time, with a key signature of two sharps (F# and C#). It begins with a double bar line and a repeat sign. The second and third staves continue the melody, with the third staff ending with a double bar line.

*Air 11*

Musical notation for Air 11, consisting of four staves. The first staff is in treble clef, 6/4 time, with a key signature of one flat (B-flat). It begins with a double bar line and a repeat sign. The second, third, and fourth staves continue the melody, with the fourth staff ending with a double bar line.



Over the hills

Air I6

*fin. (then rest my own thing)*

Air I7

*Ma. Pizzoni*

Air I8

*tr*

End of the First Act

# ACT II I

*Air 1*

*Air 2*

*Air 3*

*Young Man's Air*

*Air 4*

*Air 5*

*Air 6*

*Air 7*

*Air 8*

*Air 9*

*Air IO*

Three staves of musical notation for Air IO. The first staff begins with a treble clef, a key signature of one sharp (F#), and a 6/8 time signature. The music consists of eighth and sixteenth notes with various accidentals.

*Al. Andante*

*Air II*

Two staves of musical notation for Air II. The first staff begins with a treble clef, a key signature of two sharps (F# and C#), and a 4/4 time signature. The music features quarter and eighth notes with various accidentals.

*Air I2*

Two staves of musical notation for Air I2. The first staff begins with a treble clef, a key signature of two sharps (F# and C#), and a common time (C) signature. The music consists of quarter and eighth notes with various accidentals.

*Air I3*

Two staves of musical notation for Air I3. The first staff begins with a treble clef, a key signature of one sharp (F#), and a common time (C) signature. The music includes quarter and eighth notes with various accidentals.

*song*

Two staves of musical notation for the 'song' section. The first staff begins with a treble clef, a key signature of one sharp (F#), and a common time (C) signature. The music includes quarter and eighth notes with various accidentals.

*song*

Two staves of musical notation for the 'song' section. The first staff begins with a treble clef, a key signature of one sharp (F#), and a common time (C) signature. The music includes quarter and eighth notes with various accidentals.

*Air I4*

Two staves of musical notation for Air I4. The first staff begins with a treble clef, a key signature of one sharp (F#), and a common time (C) signature. The music consists of quarter and eighth notes with various accidentals.

*Air I4*

Two staves of musical notation for Air I4. The first staff begins with a treble clef, a key signature of one sharp (F#), and a common time (C) signature. The music consists of quarter and eighth notes with various accidentals.



*Air I 15*  $\text{6/4}$   $\text{F}^{\#}$

*Air I 16*  $\text{6/4}$   $\text{F}^{\#}$

*Air I 17*  $\text{6/4}$   $\text{Bb}$

*Air I 18*  $\text{6/4}$   $\text{F}^{\#}$

IO

*bring your fan*

Air 19

Air 20

Air 21

X Air 22

End of the Second Act.

# ACT III II

*Air 1*

Musical score for *Air 1*, consisting of four staves of music in 3/4 time with a key signature of one sharp (F#). The first staff begins with a treble clef and a key signature of one sharp. The music features a melodic line with various note values and rests, and a bass line with chords and rhythmic patterns. There are repeat signs and dynamic markings like "s:" throughout the piece.

*Air 2*

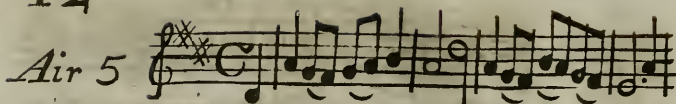
Musical score for *Air 2*, consisting of three staves of music in 6/8 time. The first staff begins with a treble clef and a 6/8 time signature. The music is characterized by a steady eighth-note rhythm in both the upper and lower parts.

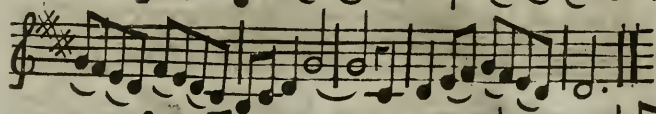
*Air 3*

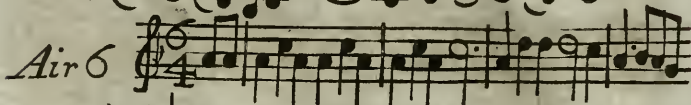
Musical score for *Air 3*, consisting of three staves of music in 3/4 time with a key signature of two flats (Bb, Eb). The first staff begins with a treble clef and a key signature of two flats. The music features a melodic line with various note values and rests, and a bass line with chords and rhythmic patterns.

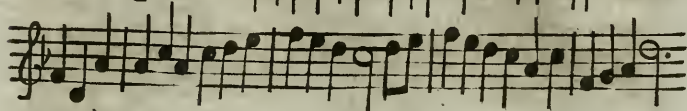
*Air 4*

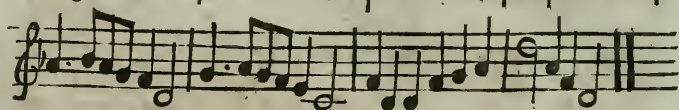
Musical score for *Air 4*, consisting of three staves of music in 6/4 time with a key signature of one sharp (F#). The first staff begins with a treble clef and a key signature of one sharp. The music features a melodic line with various note values and rests, and a bass line with chords and rhythmic patterns.

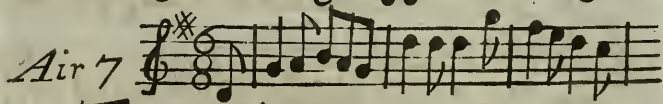
*Air 5* 

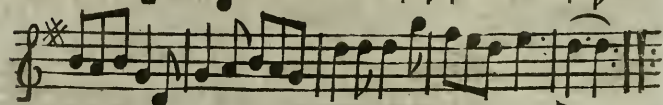


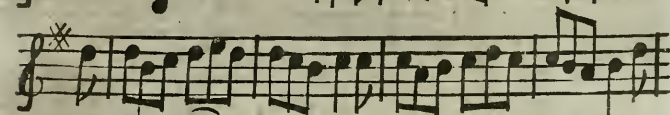
*Air 6* 

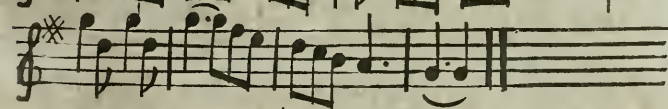


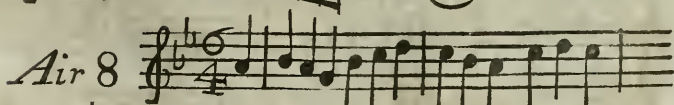


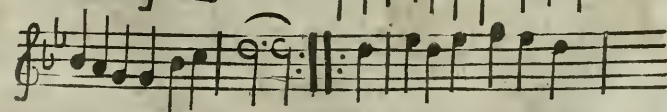
*Air 7* 

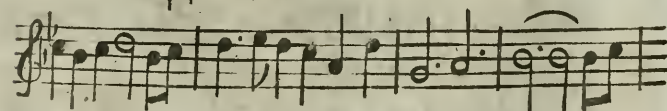


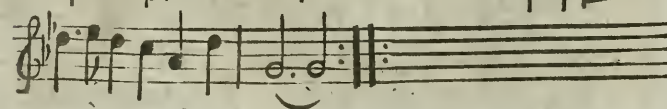




*Air 8* 







*Air 9*

Air 9 is a piece in G major (one sharp) and 3/8 time. It consists of four staves of music. The first staff begins with a treble clef, a key signature of one sharp (F#), and a 3/8 time signature. The melody is characterized by eighth and sixteenth notes, with some triplets. The piece concludes with a double bar line and repeat dots.

*Air 10*

Air 10 is in G major and 3/4 time. It consists of two staves. The first staff starts with a treble clef, a key signature of one sharp, and a 3/4 time signature. The melody features a mix of quarter and eighth notes. The second staff continues the piece, ending with a double bar line and repeat dots.

*Air 11*

Air 11 is in G major and common time (C). It consists of three staves. The first staff begins with a treble clef, a key signature of one sharp, and a common time signature. The melody is composed of quarter and eighth notes. The second and third staves continue the piece, with the third staff ending in a double bar line and repeat dots.

*Air 12*

Air 12 is in G major and common time. It consists of four staves. The first staff starts with a treble clef, a key signature of one sharp, and a common time signature. The melody is primarily composed of eighth and sixteenth notes. The second and third staves continue the piece, and the fourth staff concludes with a double bar line and repeat dots.

*The last time I saw her*

*come sweetly*

Air 13  $\frac{3}{4}$

Air 14  $\frac{6}{8}$

Air 15  $C$

*Memo 7 notes*

Air 16  $\frac{6}{4}$

Air 17 *G*

Air 18 *G*

Air 19 *G*

Air 20 *G* *Cherry Blase*

Air 21 *G*

*Joy to Great God*

Air 22 *G* *There was an old woman*

Air 23 *G*

*There was an old woman*

Air 24 *G*

Air 25 *G*

Air 26 *G* *Green Blase*

*Green Blase*

*Green Blase*

*Air 27*

*Air 28*

*song*

*song*

*chorus*

**FINIS**